

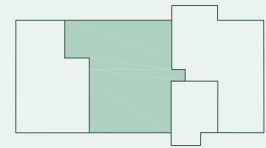
WE 07

FAKTEN

- 3 Zimmer
- 2. Obergeschoss
- 86,70 m²

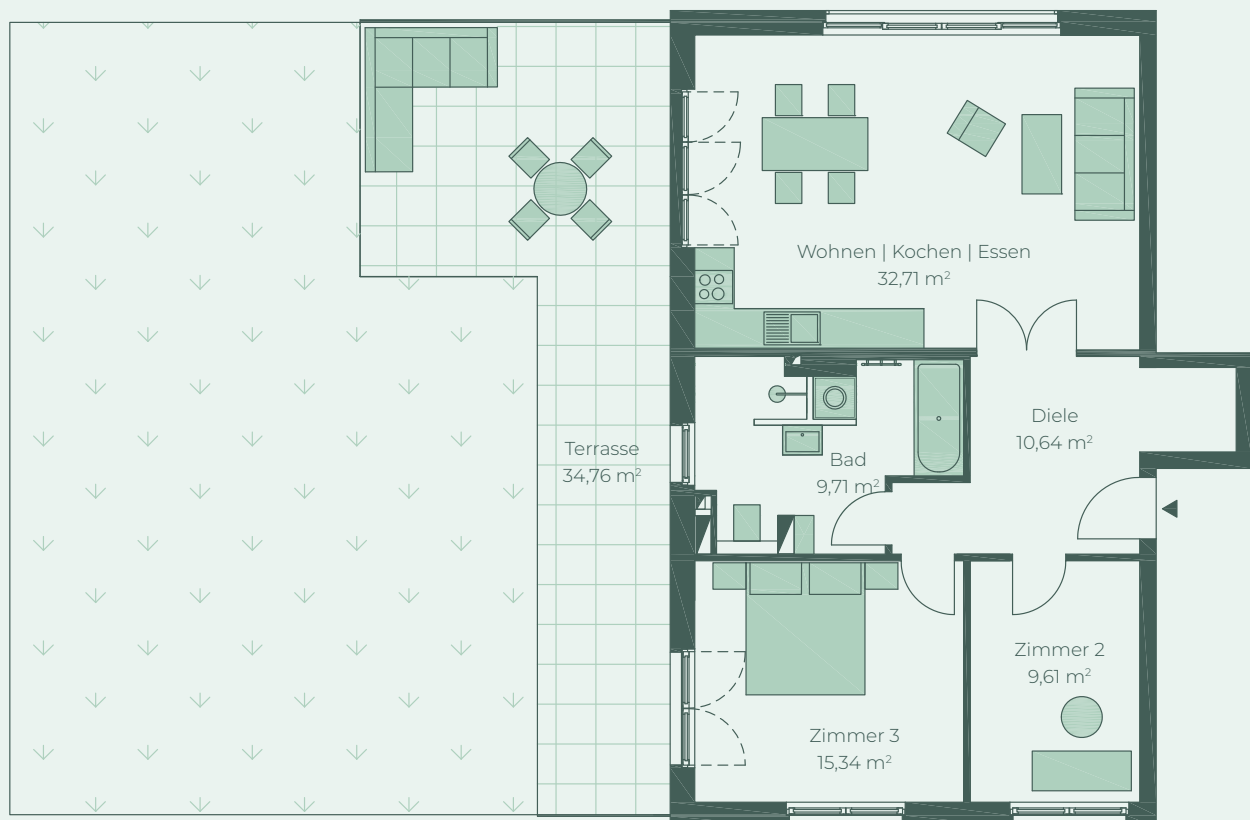
FACTS

- 3 rooms
- 2nd floor
- 86.70 sqm



Greifswalder Straße

- Terrasse — Terrace
Wohnen | Kochen | Essen — Living | Kitchen | Dining
Diele — Hallway
Bad — Bath
Zimmer — Room



Die Balkone und Terrassen werden zu 25% in die Wohnfläche eingerechnet.
Balconies and terraces are factored into the dwelling floor area at a ratio of 25%.

