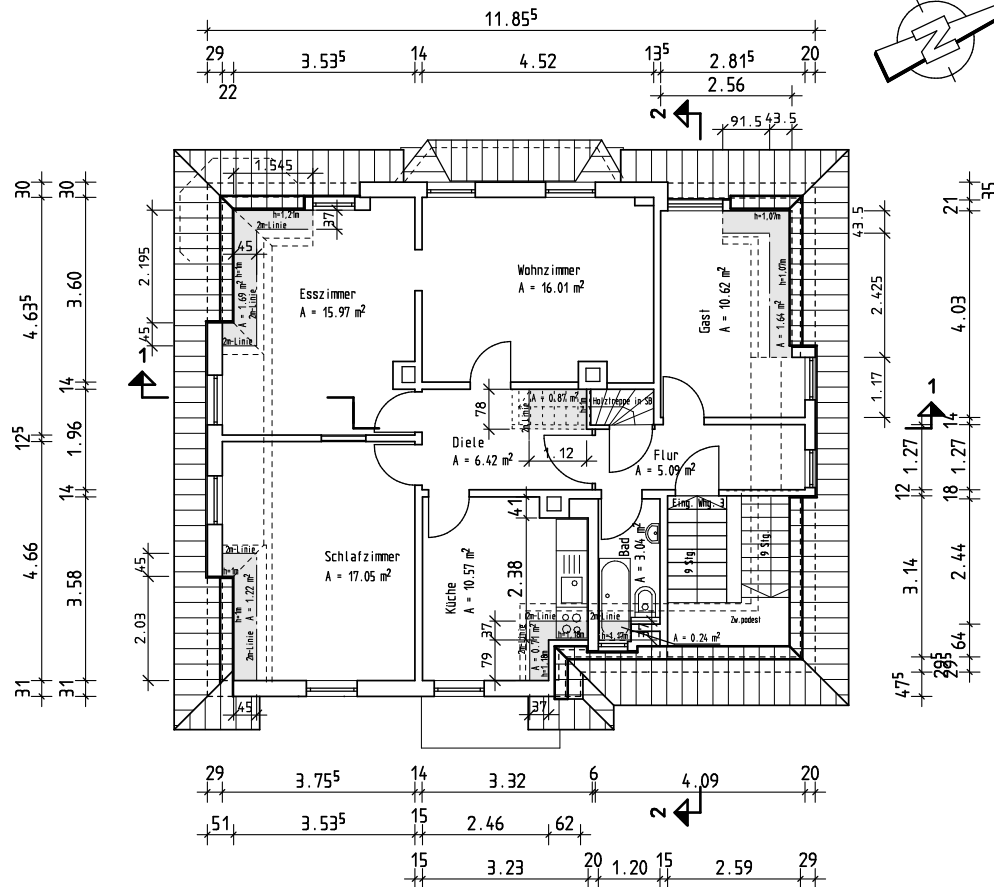
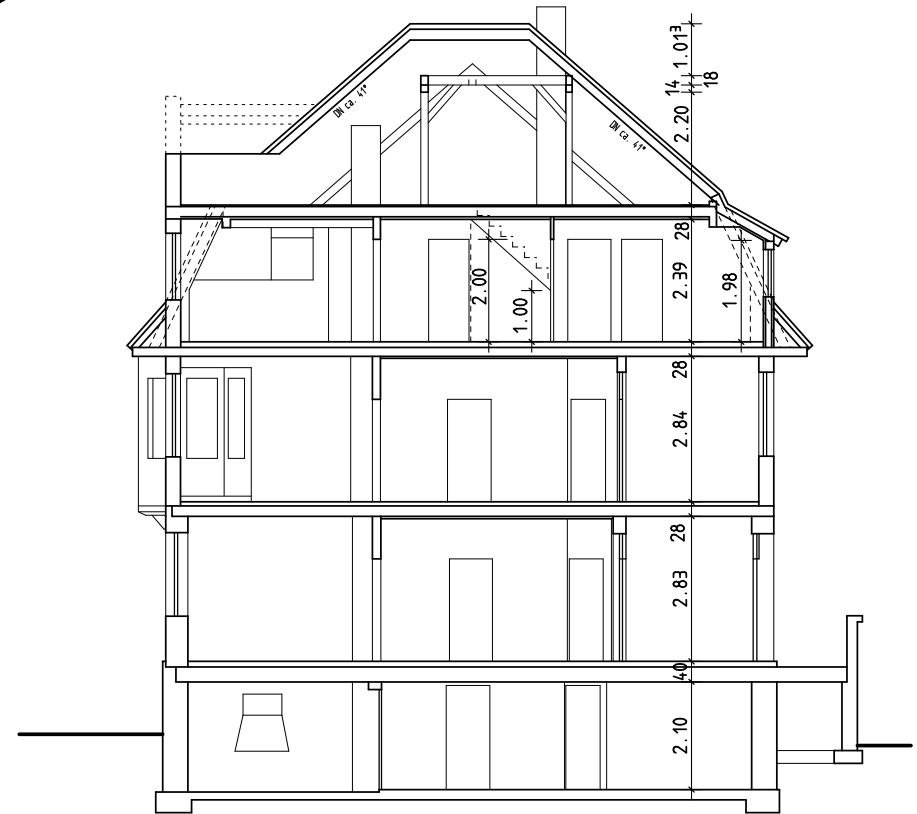


Grundriss DG M 1:100



Schnitt 1-1 M 1:100



Grundriss DG + Schnitt 1-1 M 1:100

Anwesen:

Zweibrückenstraße 30 Flnr. 2541/6

91301 Forchheim

Wohnfläche Wohnung 3 (DG)

Raumbez.	Fläche	Abzug	Wohnfläche
Schlafzimmer	A = 17.05 m²	A = 1.22 m² x 0.5 = 0.61 m²	A = 16.44 m²
Wohnzimmer	A = 16.01 m²		A = 16.01 m²
Küche	A = 10.57 m²	A = 0.71 m² x 0.5 = 0.36 m²	A = 10.21 m²
Esszimmer	A = 15.97 m²	A = 1.69 m² x 0.5 = 0.85 m²	A = 15.12 m²
Gast	A = 10.62 m²	A = 1.64 m² x 0.5 = 0.82 m²	A = 9.80 m²
Bad	A = 3.04 m²	A = 0.24 m² x 0.5 = 0.12 m²	A = 2.92 m²
Diele	A = 6.42 m²	A = 0.87 m² x 0.5 = 0.44 m²	A = 5.98 m²
Flur	A = 5.09 m²		A = 5.09 m²
		gesamt:	A = 81.57 m²

Bestandsplanung

Maßstab	Gezeichnet	Datum	Plannummer
1:100	Na.	03.07.2025	03