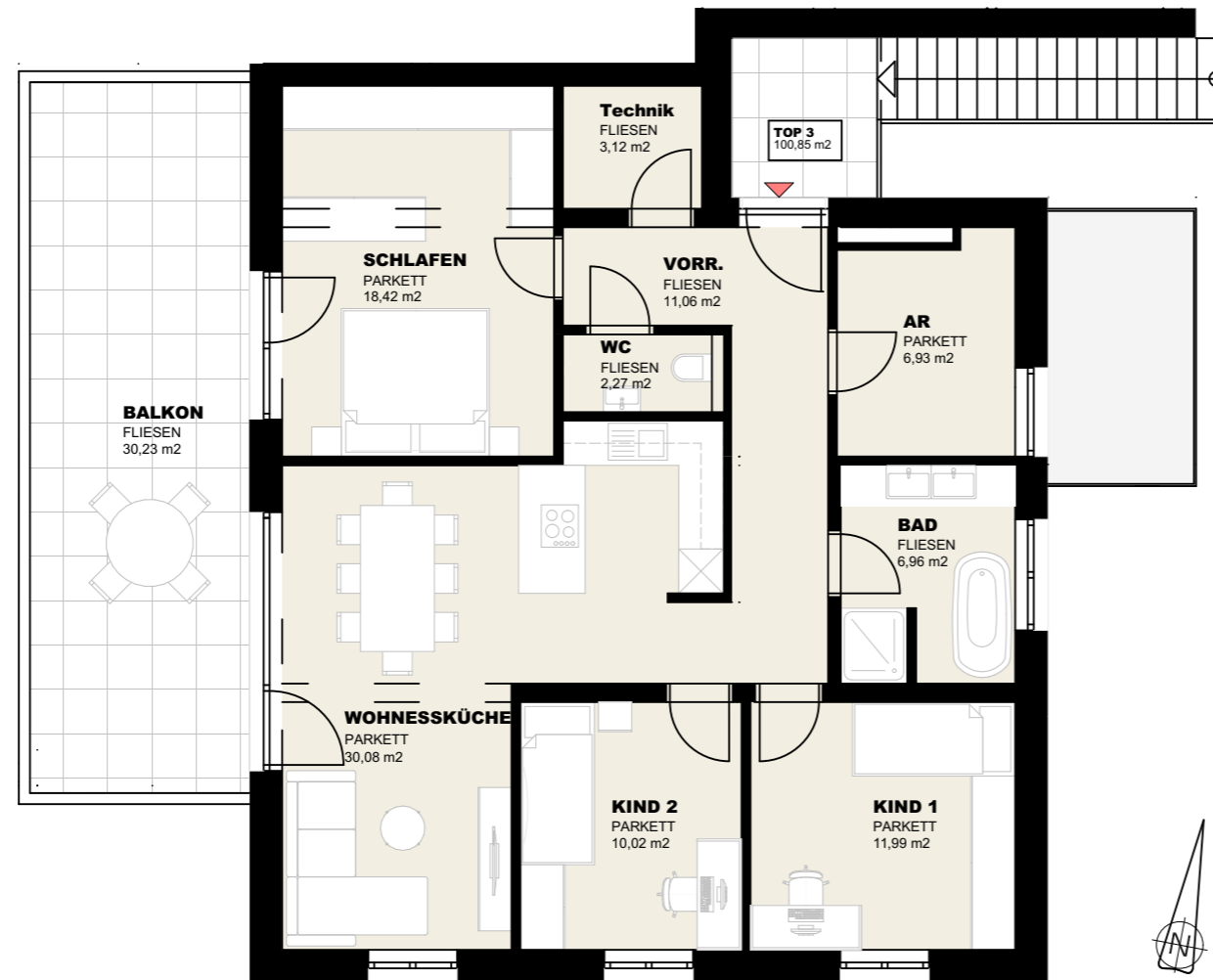


# OBERGESCHOSS - TOP 03



1.

Obergeschoss

1:100

Wohnesküche	30,08m <sup>2</sup>
Schlafen	18,42m <sup>2</sup>
WC	2,27m <sup>2</sup>
VR	11,06m <sup>2</sup>
AR	6,93m <sup>2</sup>
Technik	3,12m <sup>2</sup>
Bad	6,96m <sup>2</sup>
Kind1	11,99m <sup>2</sup>
Kind2	10,02m <sup>2</sup>

**Summe** 100,85m<sup>2</sup>

Balkon 30,23m<sup>2</sup>

Planübersicht:

