

### TIEFGARAGE

ca. 262m<sup>2</sup>

natürliche Lüftung

freien Gesamtquerschnitt von mind. 1500cm<sup>2</sup> je Estpl.

8 Einstellplätze x 1500cm<sup>2</sup> = 12000cm<sup>2</sup>

Berechnung für natürliche Belüftung gem. GastplIVO:

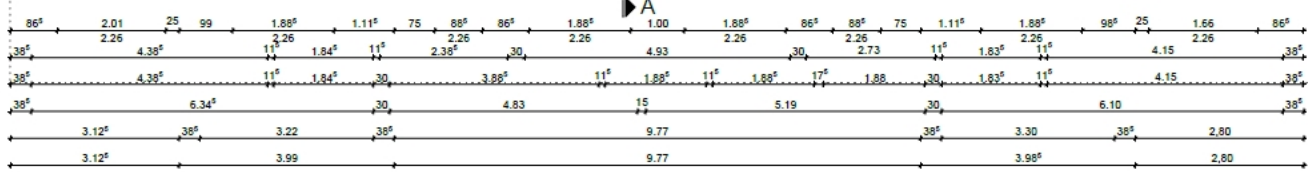
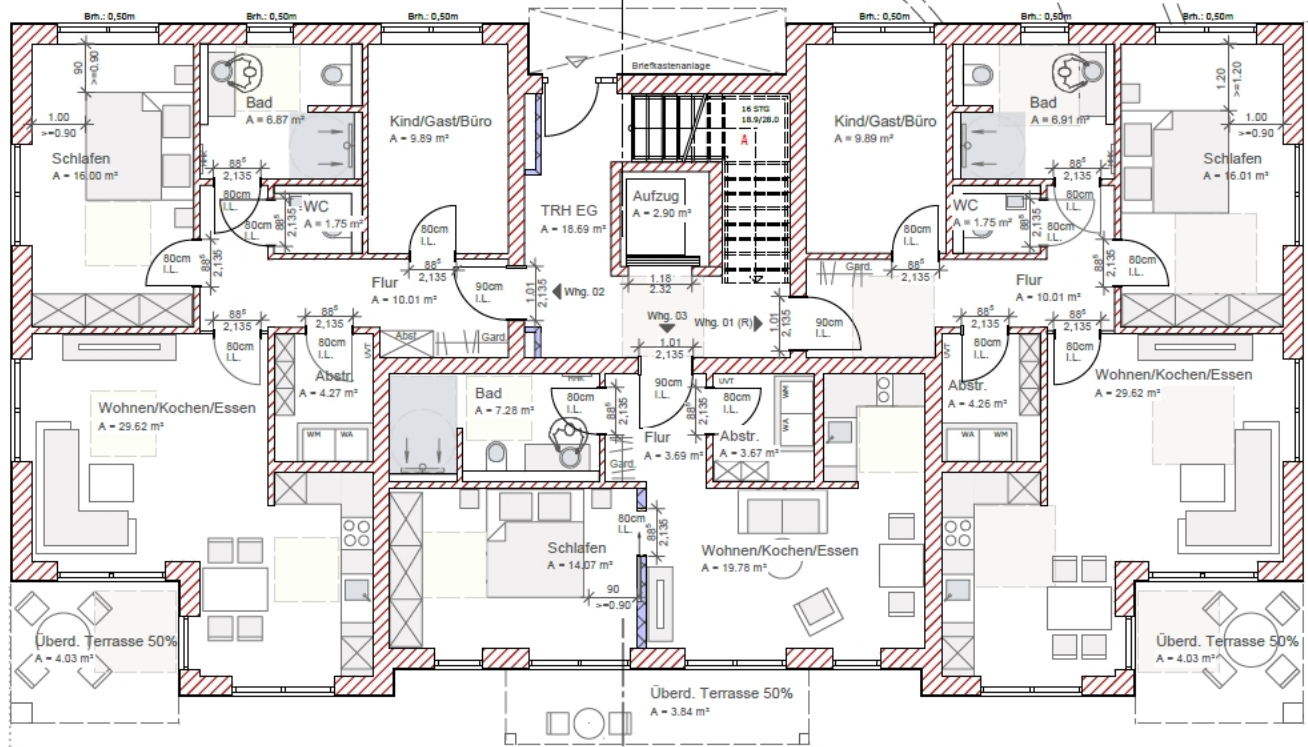
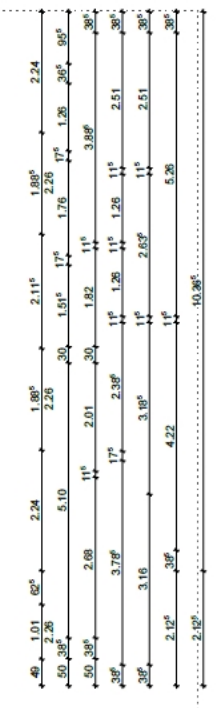
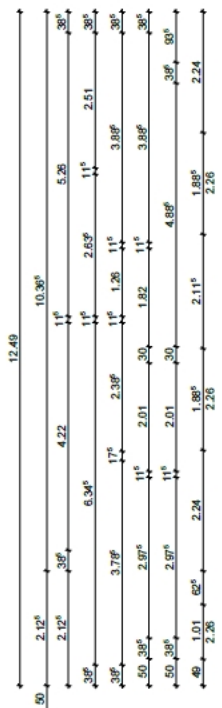
Querschnitt pro Stellplatz: 1500cm<sup>2</sup>

8 x 1500cm<sup>2</sup> = 12000cm<sup>2</sup> = 1,2m<sup>2</sup>

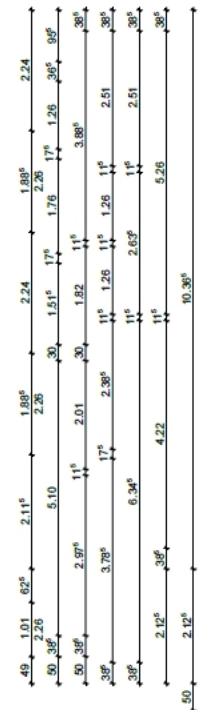
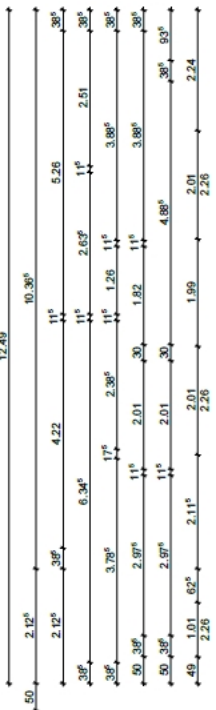
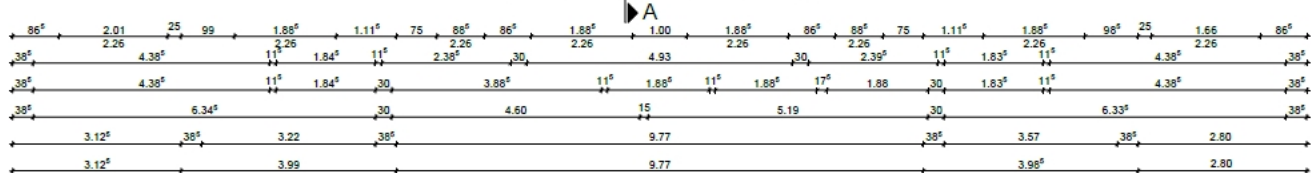
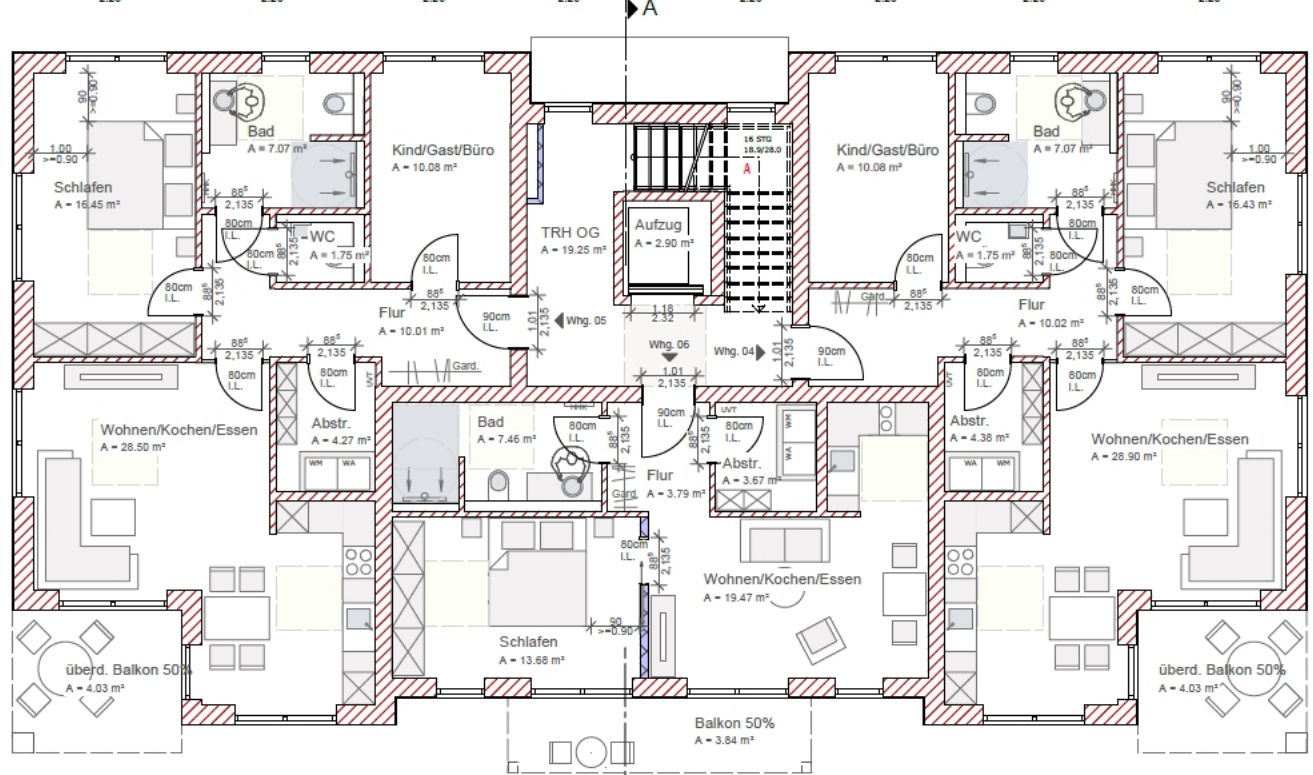
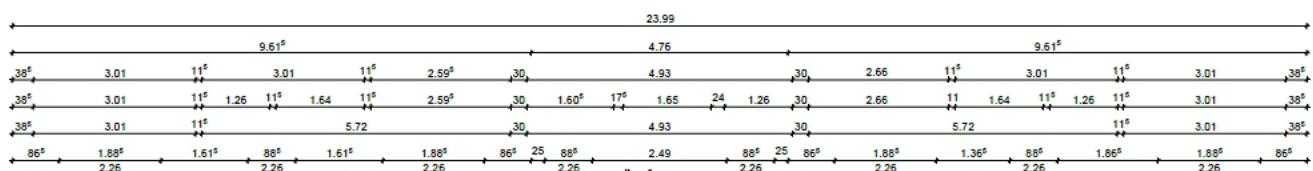
3 Öffnungen inkl. Garagenrolltor (Gitter)

Garagenrolltor 7,9m<sup>2</sup> x 0,5 = 3,95m<sup>2</sup>

1,2m<sup>2</sup> / 3 = 0,4m<sup>2</sup> pro Öffnung



ERDGESCHOSS



1. OBERGESCHOSS

