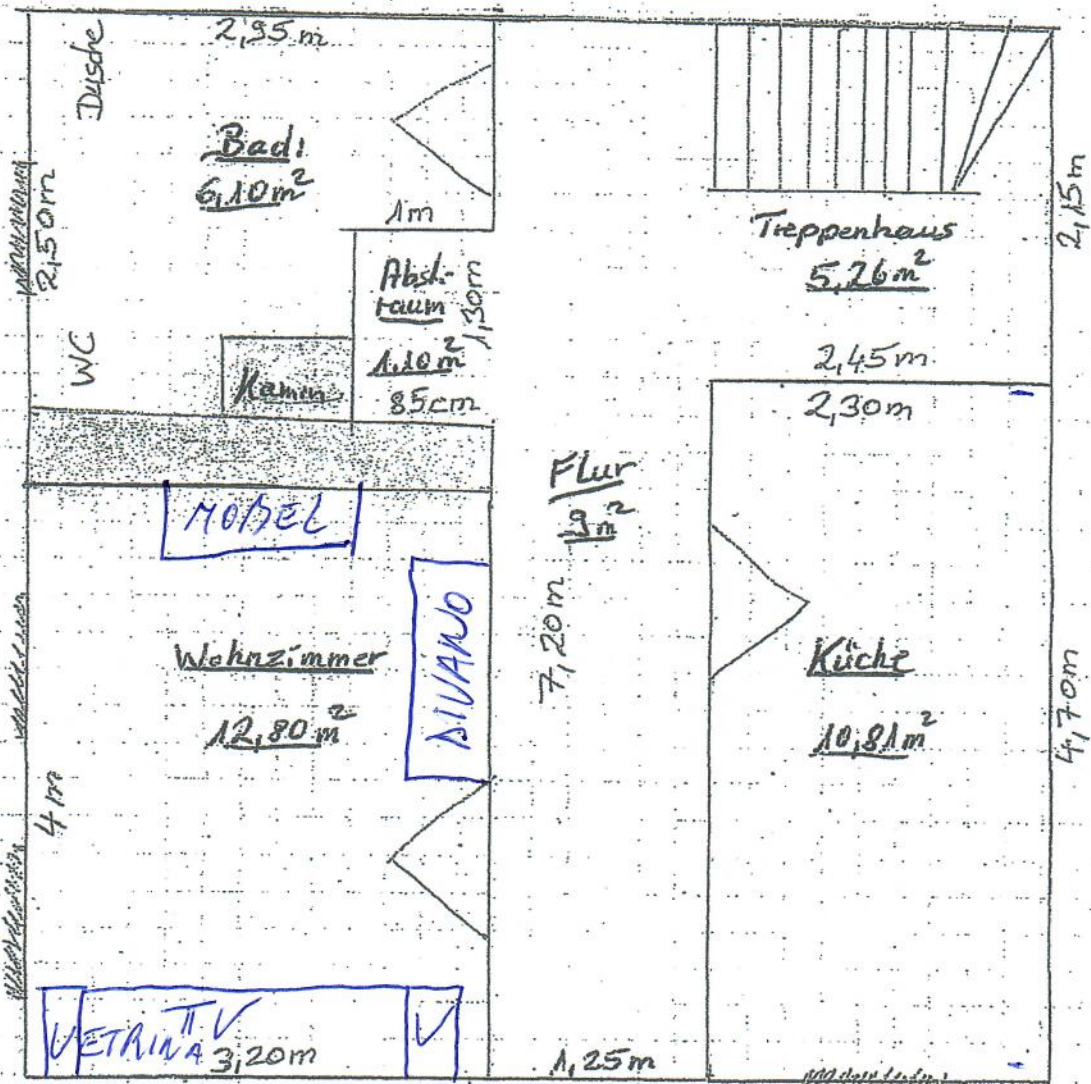
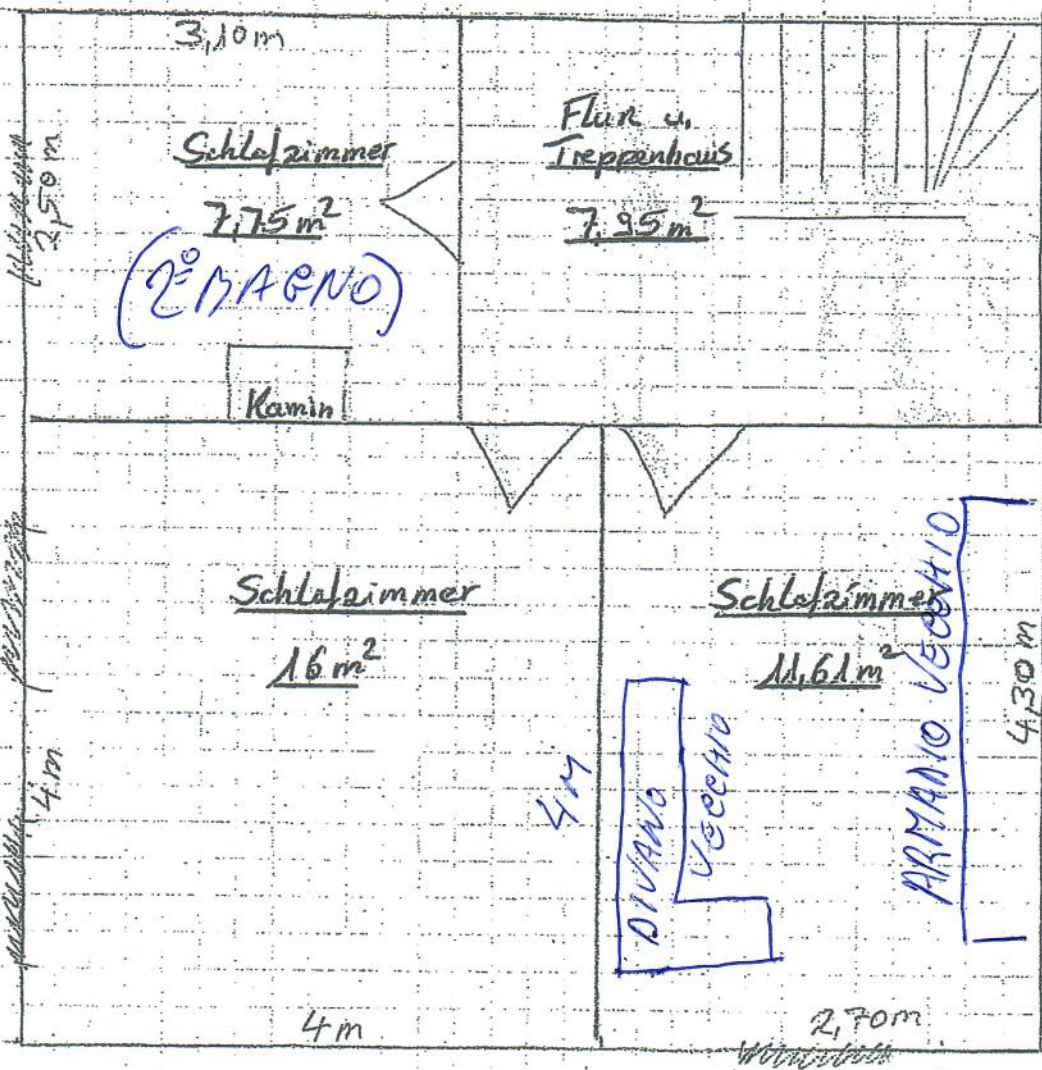


PIANO TERRA



EG:	Flur	14,26 m ²
	Treppenhaus	
	Küche	10,81 m ²
	Wohnzimmer	12,80 m ²
	Abstellraum	1,10 m ²
	Bad	6,10 m ²
		<hr/>
		45,07 m ²

1° PIANO

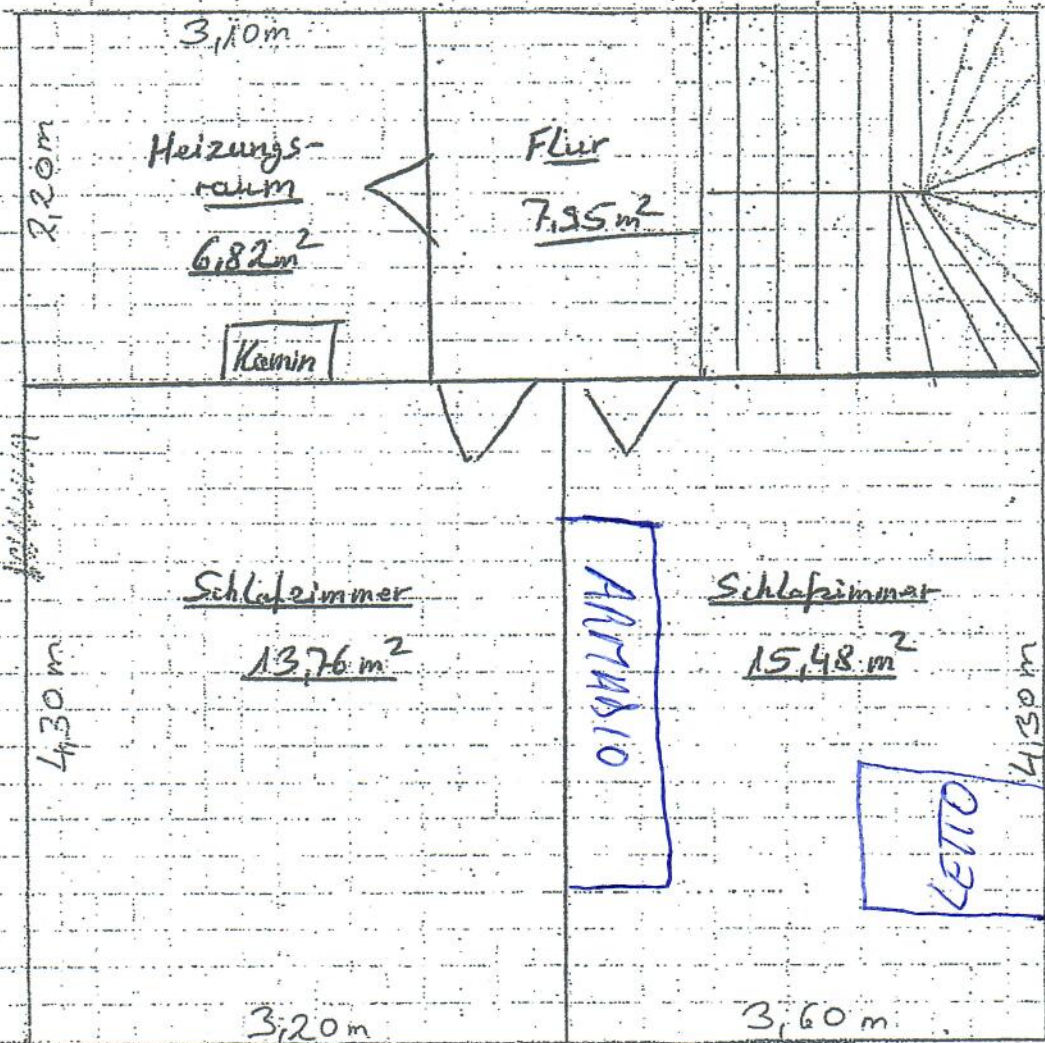


OG:

Flur	7,95
Schlafi.	7,75
Schlafi	16,00
Schlafi	11,61

43,31 m² (45,07 m²)

2° PIANO



ATTICIO
2.10

DG:	Schlafzi	15.48 m ²
	Schlafzi	13.76 m ²
	Flur	7.95 m ²
		<u>37.19 m²</u>

Netzfläche 6.82 m²

Minus die Schrägen