



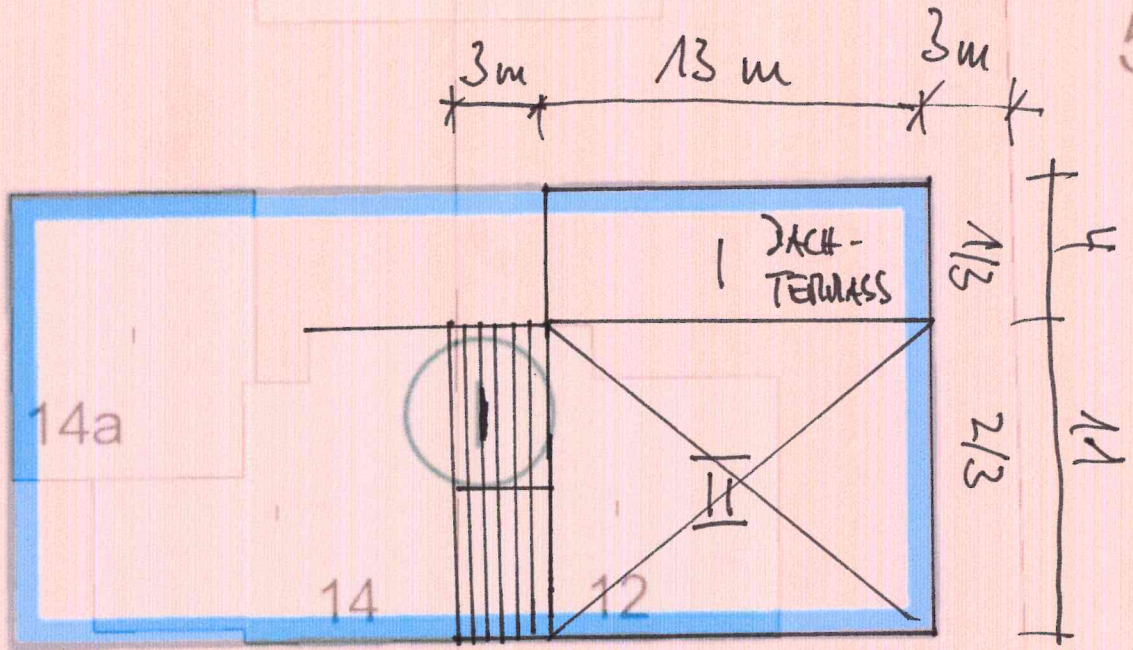
Festsetzunge... X



1548

1549

551



Umfang Wfl:

$$3 \times 10 \times 1 = 30$$

$$4 \times 13 \times 1 = 52$$

$$13 \times 11 \times 2 = 286$$

$$\begin{array}{r} 368 \times 0,75 \\ \hline 276 \text{ m}^2 \end{array}$$

1537

1536

10a

