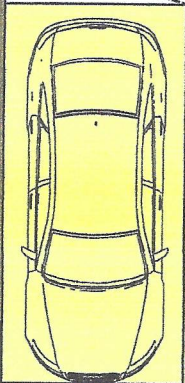
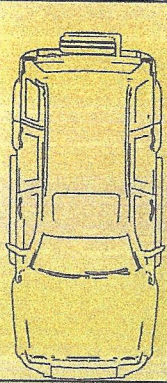
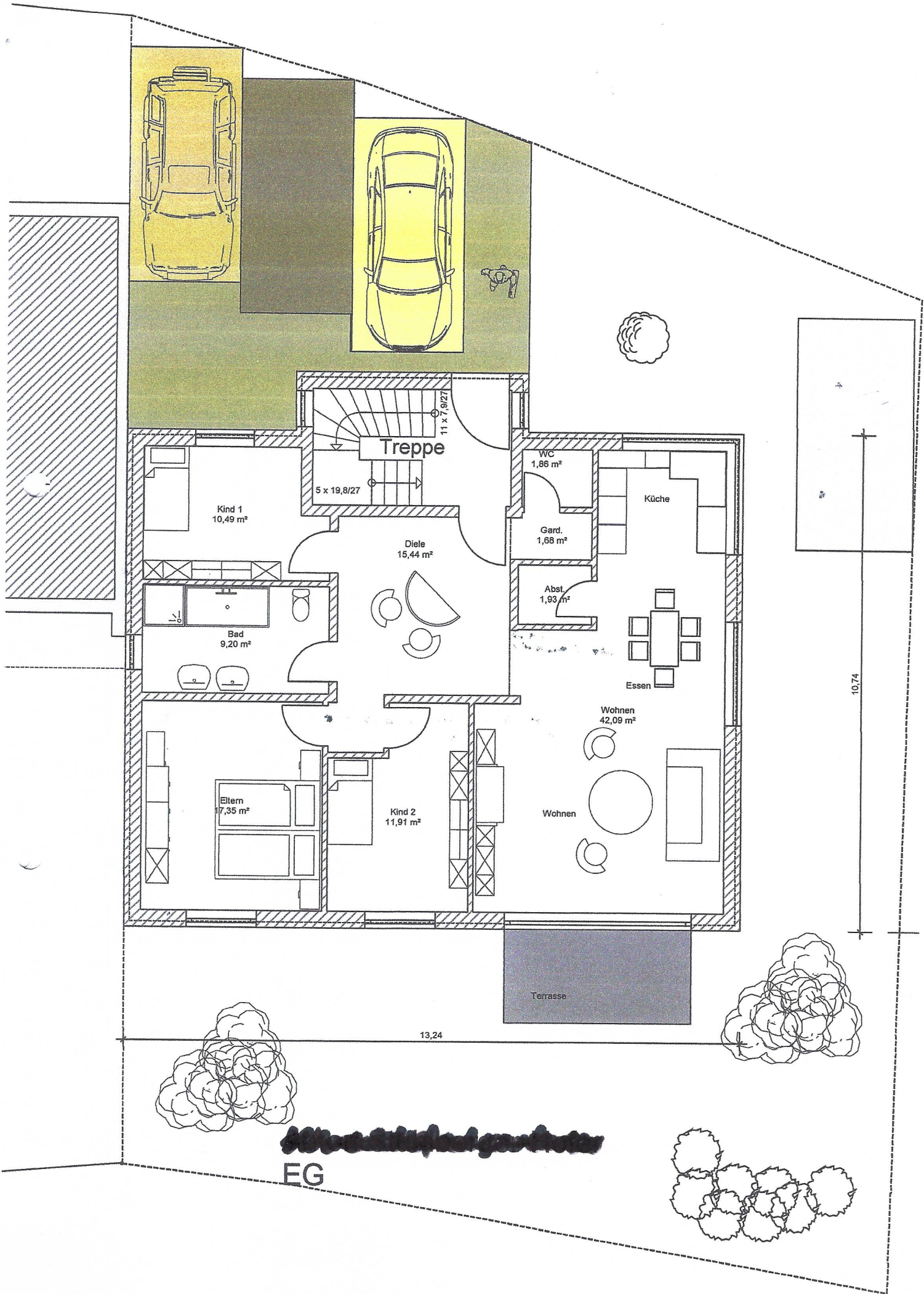


Ansicht von Osten

Lageplan : M = 1 : 200

Siehe Plan vom 28.12.2017



Treppe

Kind 1
10,49 m²

Bad
9,20 m²

Eltern
17,35 m²

Diele
15,44 m²

Kind 2
11,91 m²

WC
1,86 m²

Gard.
1,68 m²

Abst.
1,93 m²

Küche

Essen

Wohnen
42,09 m²

Wohnen

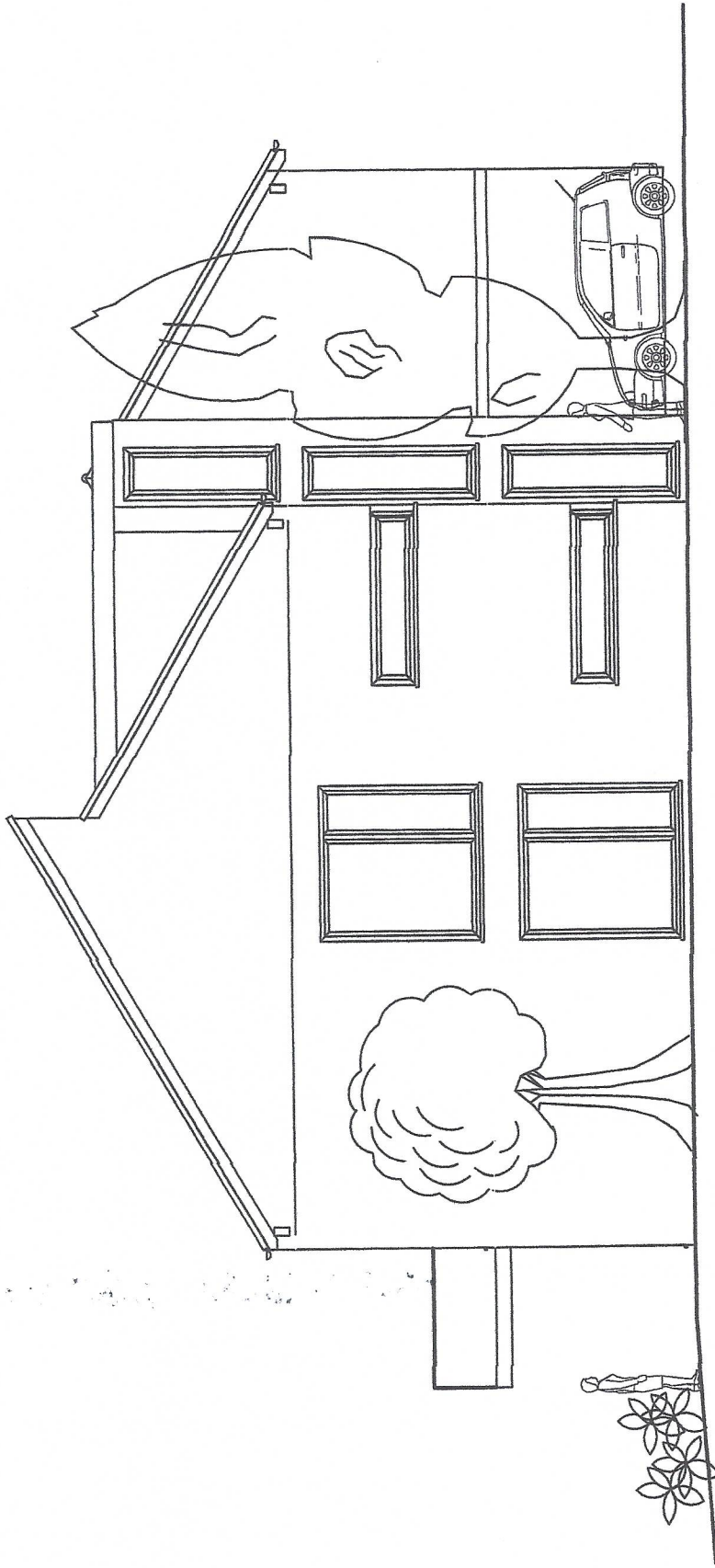
Terrasse

13,24

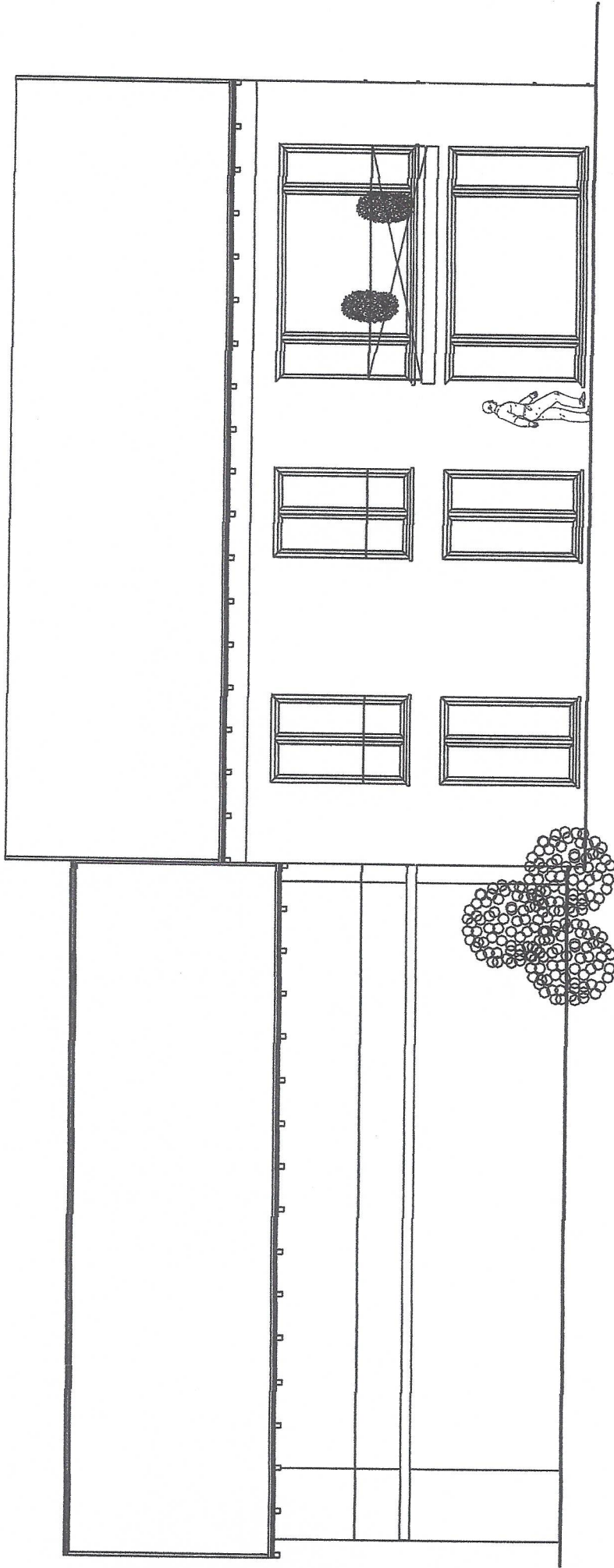
10,74

Streuobstgarten

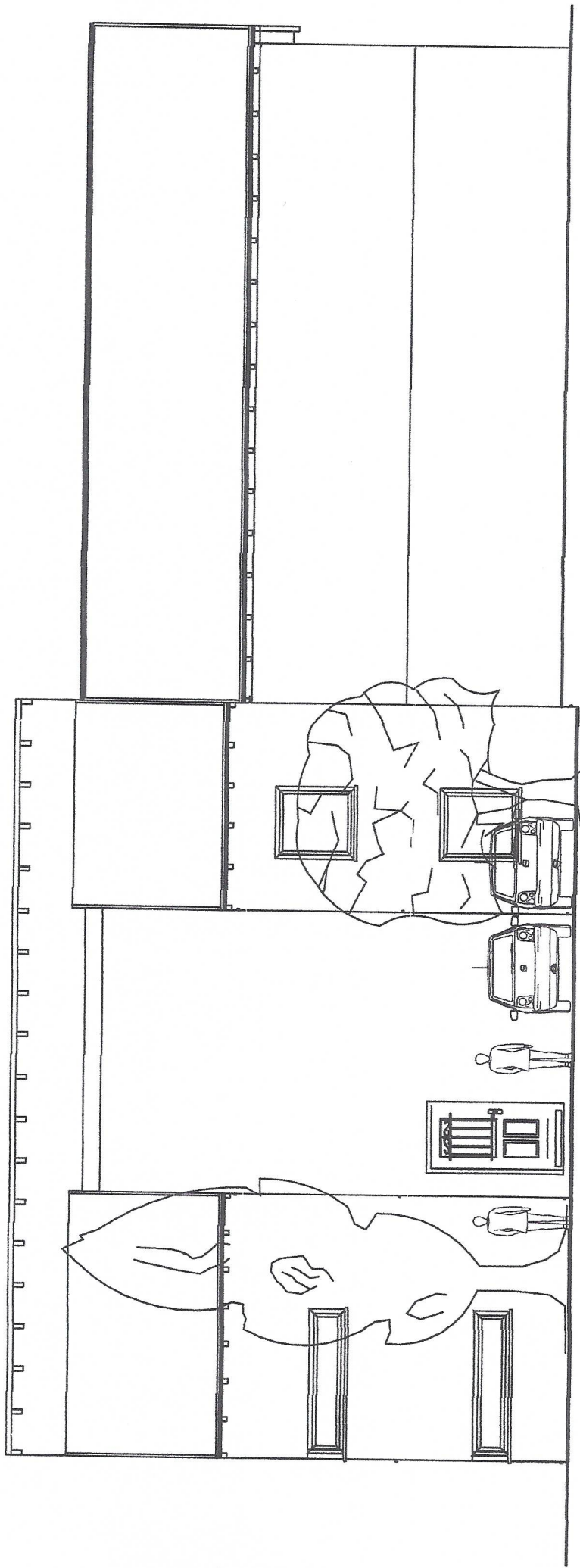
EG



Haus ~~Österr...~~
Osten



Haus 
Süden



Haus: ~~XXXXXXXXXX~~
Norden