

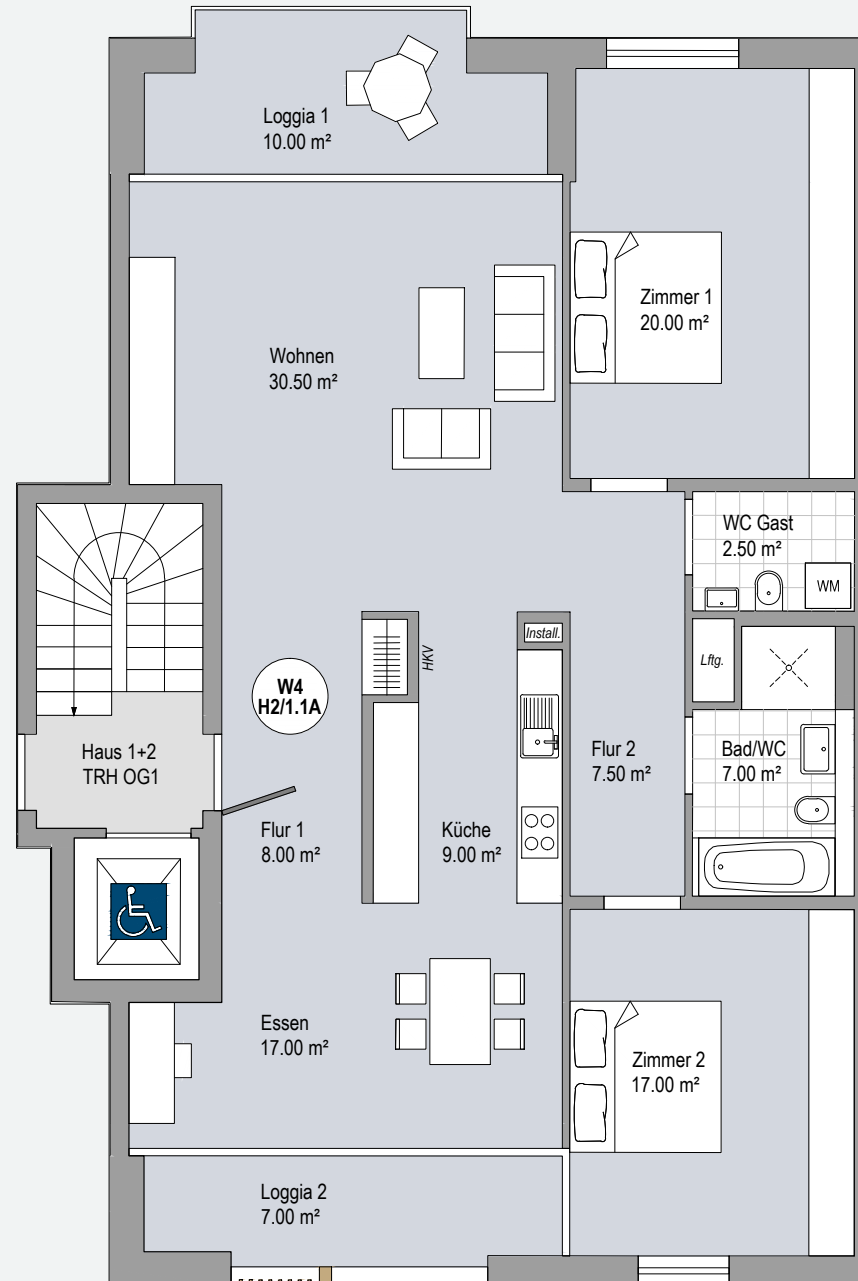
HAUS 2 - OG1

Whg W4 - H2/1.1A

laut Baugenehmigung barrierefrei

Flur 1	8.00 m ²
Flur 2	7.50 m ²
Küche	9.00 m ²
Wohnen	30.50 m ²
Essen	17.00 m ²
Zimmer 1	20.00 m ²
Zimmer 2	17.00 m ²
Bad/WC	7.00 m ²
WC Gast	2.50 m ²
Loggia 1 50%	5.00 m ²
Loggia 2 50%	3.50 m ²

127.00 m²



1.00