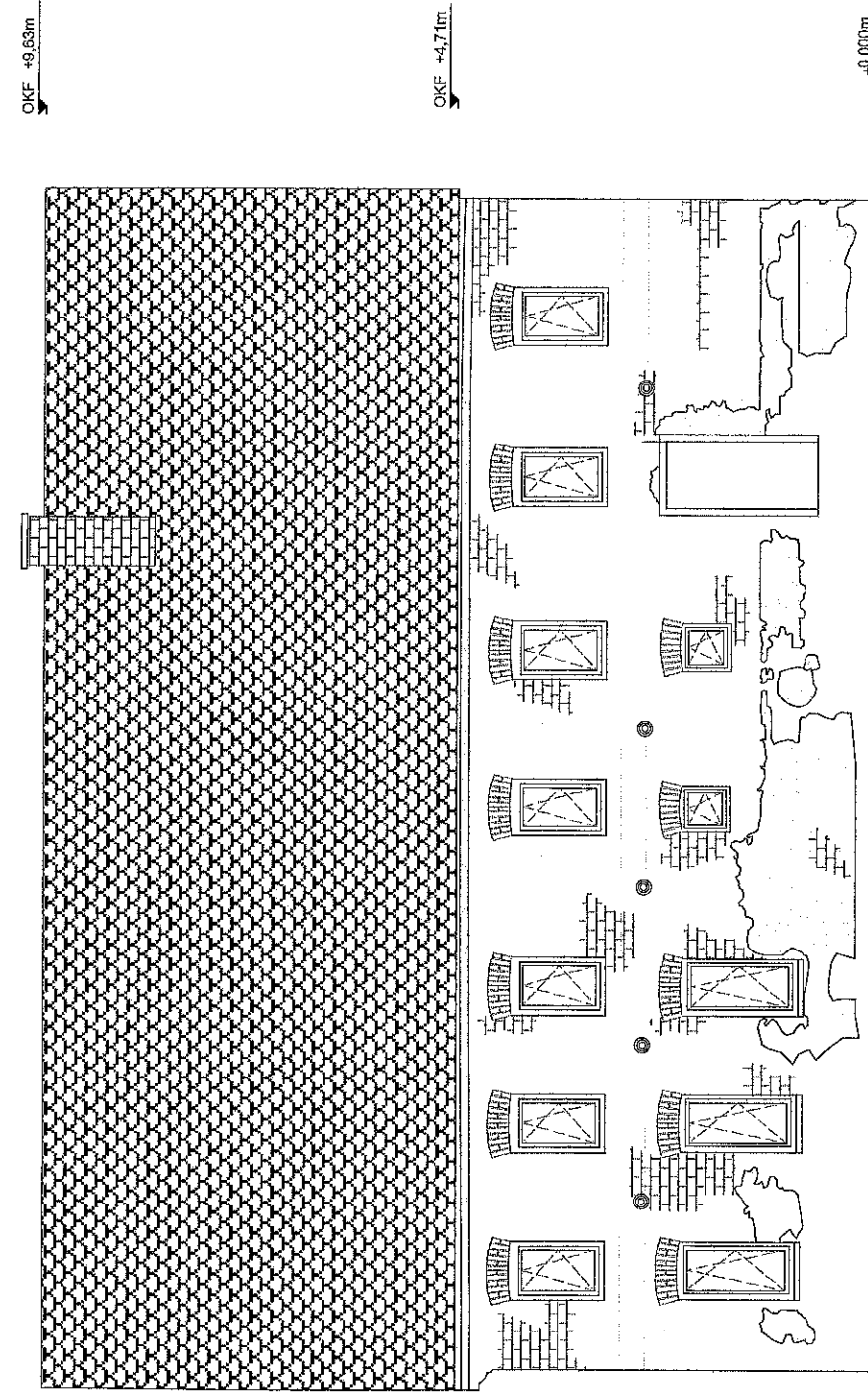
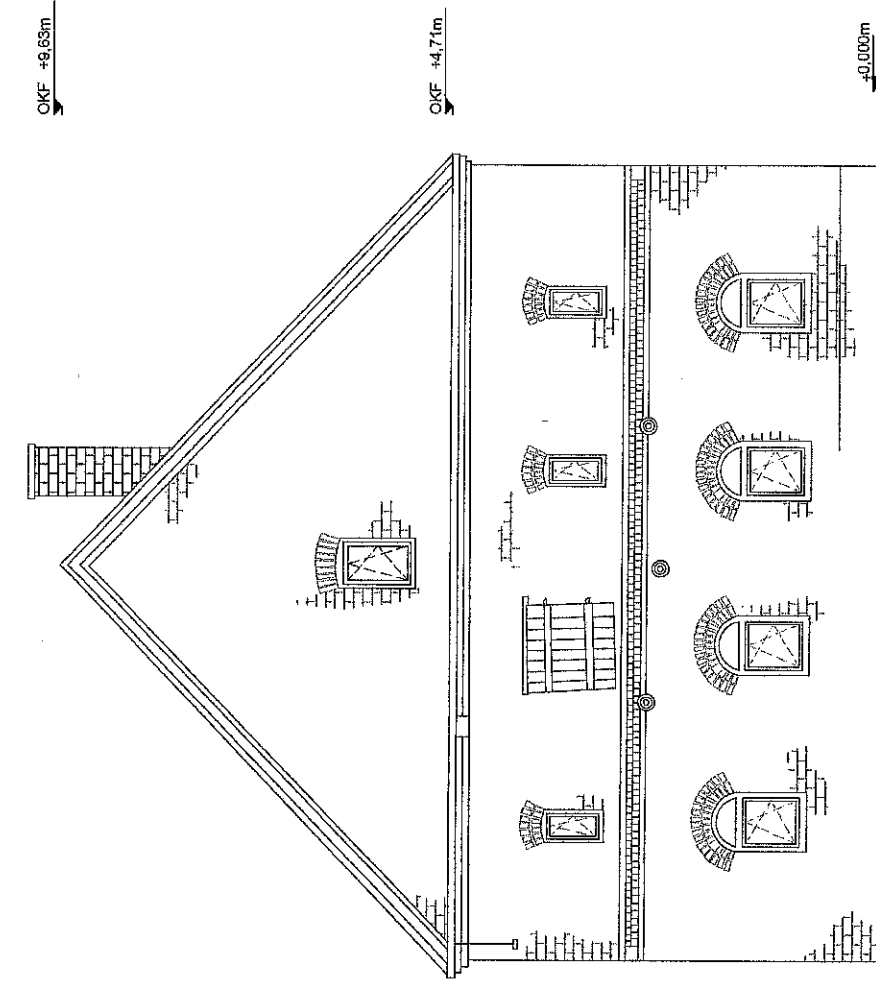


Ansicht Nord

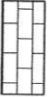










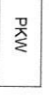


Ansicht Süd



Ansicht West

Zeichenerklärung

-  Mauerwerk Ansicht
-  Putz
-  Mauerwerk
-  Bodenaufschüttung
-  Gipskartonwand
-  Grundstücksgrenze
-  E — Strom
-  SW — Schmutzwasser
-  TW — Trinkwasser
-  DW — Dachwasser
-  Tel — Telekom
-  PKW — Parkplatz

BAUVORHABER
Umbau einer ehem. Brauerei zum Wohngebäude

BAUHERR
Romy Müller
Hauptstraße 83
06917 Holzdorf (Jessen)

PLANERFASSER
Dipl. Ing. Andreas Kummer
Goethestr.26
04668 Grimma

PLANSTADIUM
Genehmigungsplanung

PLANTITEL

Ansichten Bestand

GEZEICHNET

GEPROBT

DATUM

01.10.13

MASSSTAB

1:100

PLANNR.

06