

Open the door to a  
new chapter of luxury  
living and scale the  
heights, all from the  
comfort of your own  
home.

Bringing the  
highest standards  
of purpose-built  
residential living  
to the UK's  
second city.

With over 30 years' experience in the UK and  
international real estate markets, Investin are  
specialists in high end residential and commercial  
property development and investment opportunities.



# Why Birmingham?

**"Birmingham has a world-class talent pool thanks to its internationally-renowned universities and research facilities. Continued investment in infrastructure such as HS2 and the metro, investment at Birmingham international airport, and improvements in connectivity realised through the 5G test-bed, ensures the Midlands growth story will be attractive to future generations of talent."**

*Matthew Hammond, PWC*

Originally the 'workshop of the world' during the industrial revolution, it's always been at the forefront of innovation and the birthplace of iconic brands such as Cadbury's, Lloyd's Bank and HP Sauce. In more recent years, the city has gained recognition for its financial, tech and business hubs, with major companies such as Goldman Sachs moving in to Colmore Row, HMRC creating a regional hub at 3 Arena Central and HSBC Bank setting up headquarters in the city instead of London – a growing trend among blue-chip employers.

PWC's move to One Chamberlain was its largest single office investment ever made outside of London and BT announced in early 2020 it was to move 4,000 workers to Snow Hill, quintupling the amount of staff it already had in Birmingham and making it the city's biggest employer.

With the highest inward investment (apart from London) in the UK improving connectivity and infrastructure, with 37% of the population under the age of 25, and the highest percentage of graduate retention in the country, the city is being reborn as it continues to reposition itself nationally and internationally as a major regional centre at the heart of the UK.

With new residential, commercial and realm development the city has been re-energised as a popular place to live and work.

## £1bn

### **Growth by end of 2023**

Already established as a prosperous, high growth city, major projects including HS2, a regional housing boom and global investment are powering Birmingham's economic growth

## 24.5% growth

### **2022 – 2026**

JLL 5 year growth forecast for Birmingham residential property values - the highest in the UK

## 14% increase

### **Rental values**

JLL forecast a 14% increase in rental values in Birmingham 2022 – 2026

## 41%

### **Graduate retention**

With a student population of 80,000, Birmingham retains 41% of graduates, providing an evergreen source of private rental tenants

## 32%

### **Of Birmingham City population aged 15 – 34**

With the youngest city population in Europe, there is high demand for private rental property

# A bright future!

## OUR FUTURE CITY PLAN

### A community-centric initiative

In 2021, Birmingham City Council unveiled its vision to create a blueprint for the city's vibrant future, addressing retail, offices, leisure, education, tourism, civic and community functions with a strategy to implement by 2040. Four guiding principles are at the heart of the plan – to create a green city where nature is integral; an equitable city where communities have equal opportunities; a liveable city that's people focused and a distinctive city that takes pride in the individual identities of its communities.

## COMMONWEALTH GAMES 2022

### Regeneration and tourism

In July 2022, Birmingham stepped onto the world stage as hosts of the Commonwealth Games. Bringing in £778m worth of investment it will not only provide improvements to local infrastructure and a legacy springboard for future investment but will add an extra 1 million visitors to the city's tourism economy (42.8 million visitors per year) with a subsequent spend of £7.1 billion.

## CONNECTED TO THE WORLD

### Global destination hub

Birmingham Airport is proposing investment of £500m (\$649.1m) for improvement, modernisation, and extension of the current facilities to increase its annual passenger handling capacity to 18 million by 2033.

## BIRMINGHAM HEALTH INNOVATION CAMPUS

### World-leading connected healthcare technologies centre

A University of Birmingham initiative opening in 2023 with a ten-year plan for 700,000 sq ft of state-of-the-art laboratories, office and incubation space. The campus will create 10,000 new jobs and contribute £400m GVA to the regional economy by 2030.

## HS2 - ECONOMIC BOOST AND JOB CREATION

### Faster links to London

Improved access to London will follow with HS2, which will reduce the direct train link to London from 1 hour 24 minutes, to just 52 minutes by 2029. HS2 is projected to boost the local economy by an estimated £1.5bn and bring 22,000 jobs to the region.

## REACH 90% OF THE UK IN 4 HOURS

### National connectivity

Birmingham is the most connected regional city in the UK. Home to the busiest interchange railway station outside of London, Birmingham New Street connects the country, with direct services to London, Manchester, Bristol, Cardiff, Glasgow and Edinburgh.

## ENTREPRENEURIAL TECHNOLOGY HUB

### A city of the future

Over 6,000 tech companies are registered, and along with the support of Innovation Birmingham, a dedicated 100,000 sq ft campus for the digital and tech community, the industry is beginning to rival the proliferation of financial and professional service providers in the city. In addition, a large scale 5G rollout is currently being advanced with a target to reach net carbon zero by 2030.



The UK's most connected regional city



Commonwealth Games 2022 - a lasting legacy



A centre of excellence for innovation in health and technology



Substantial investment in the city's airport



A future focused on the people of Birmingham



HS2 - Birmingham to the capital in just 52 minutes

A nighttime photograph of Birmingham, UK, showing a mix of modern and historic architecture. The Bullring building is prominent on the left, with its name visible on the top. In the center, the spire of St Martin's Church rises above other buildings. The foreground shows a street with a red double-decker bus and several cars. The sky is dark with some clouds.

# Regeneration for a new generation.

Many areas of the city are undergoing transformation to adapt to the ever-growing influx of world-class employers. Driving growth and regeneration, Snow Hill is the subject of a 20 year masterplan that will enhance the area's key assets, including a £50m overhaul of Snow Hill station. Included within the masterplan, the commercial district of Colmore Row, already home to Goldman Sachs, will significantly contribute to the city's economy with professional services, retail and the hospitality sectors employing over 35,000 people. HS2 has also established its construction headquarters here, with 1,500 employees.

With unprecedented global investment allied to forecasts of 4.9% pa growth in residential property values over 5 years, and growing rental values underpinned by a young, rapidly expanding population expected to grow by 400,000 by 2043, Birmingham is leading the way as the UK's no. 1 investment hotspot. Boulevard presents the opportunity to share in the success of the city's future, transformed from its manufacturing foundations to a safe, welcoming and vibrant destination for businesses, residents and visitors.

A BESPOKE COLLECTION OF 145  
APARTMENTS IN A PRIME LOCATION  
IN THE CITY OF BIRMINGHAM.



LARGE, CONTEMPORARY  
LIVING SPACES



TWO RESIDENTS'  
LOUNGES IN PHASE ONE



LIVE/WORK LOUNGE  
& PRIVATE WORKING  
BOOTHS



STATE-OF-THE-ART  
GYMNASIUM AND  
FITNESS STUDIO



RESIDENTS'  
CINEMA ROOM



RESIDENTS'  
KITCHEN AREA



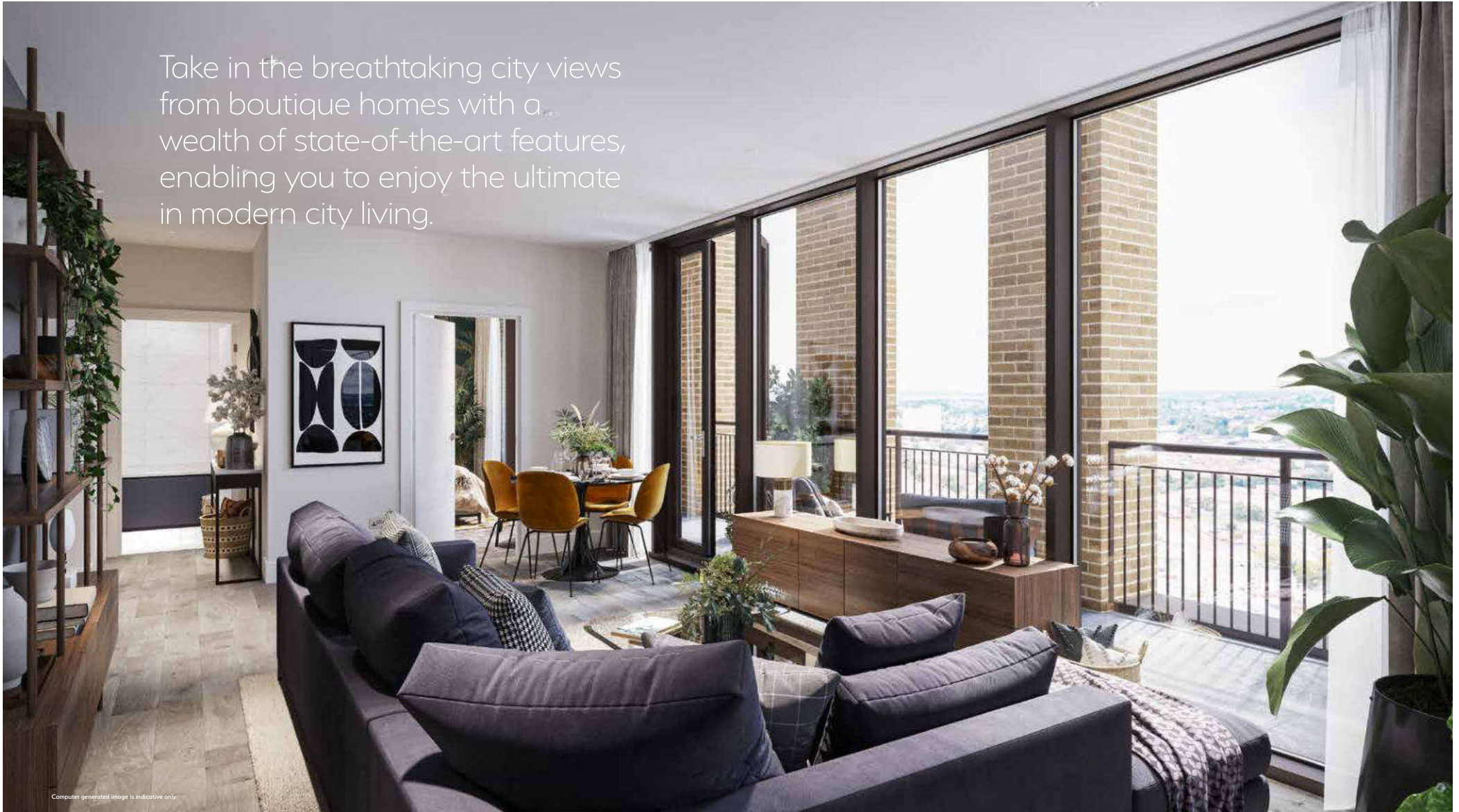
COURTYARD GARDENS  
AND TERRACE AREA



RESIDENTS' PARKING  
ALLOCATION AVAILABLE  
TO PURCHASE



Take in the breathtaking city views from boutique homes with a wealth of state-of-the-art features, enabling you to enjoy the ultimate in modern city living.

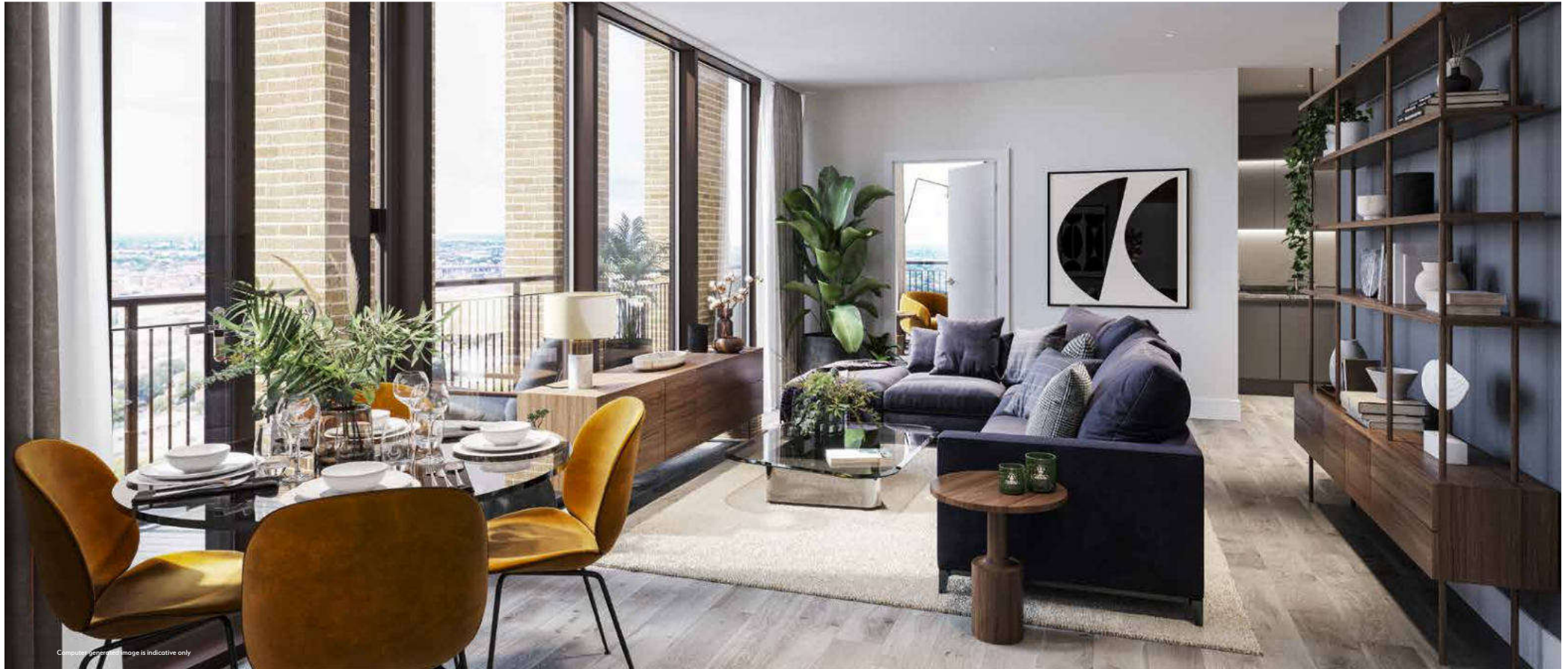


Computer generated image is indicative only

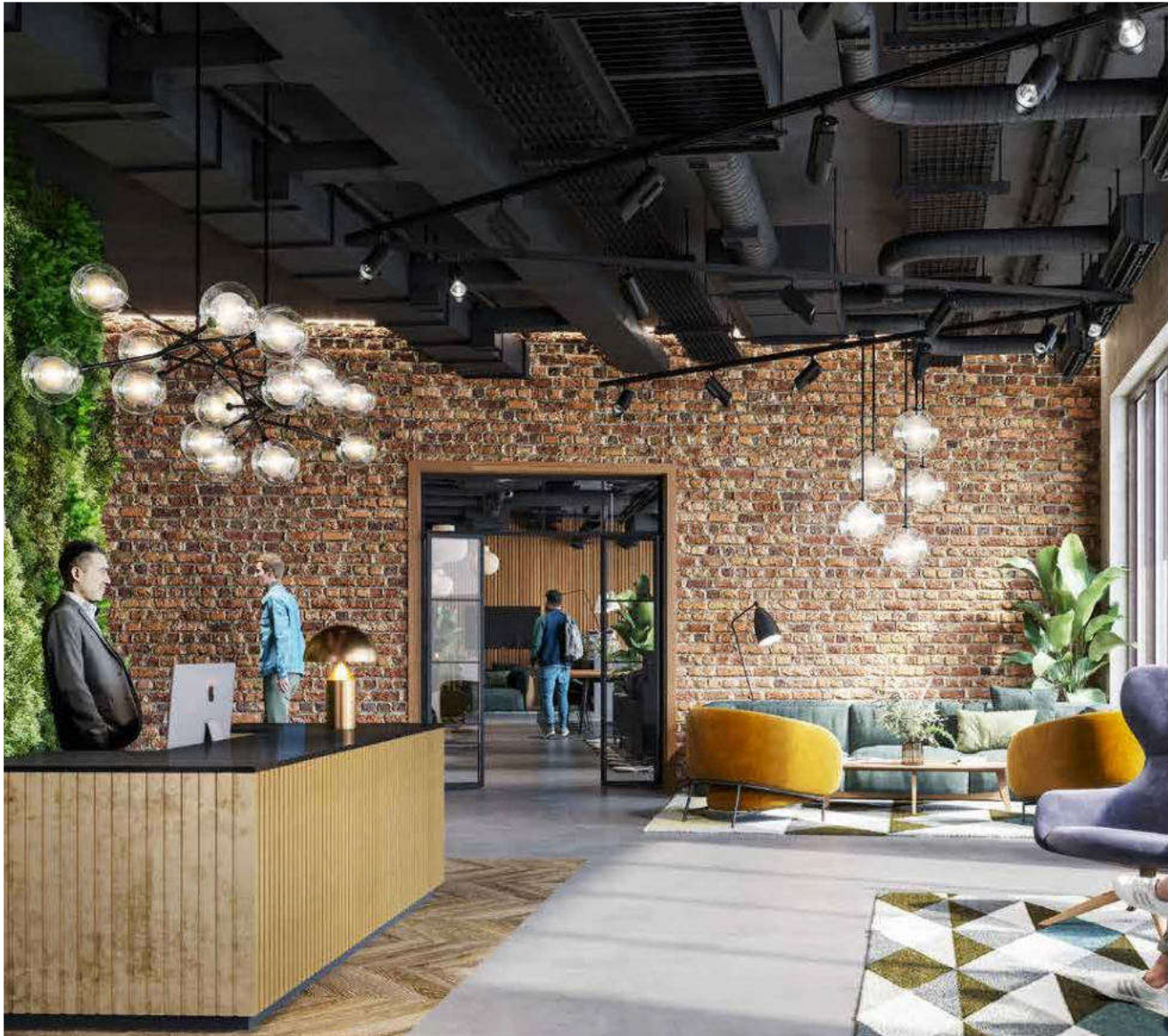
Built to be energy efficient, the one and two bedroom properties epitomise stylish and sustainable living. Spacious and private, these are residences designed for individuals. Restful and serene, this is the perfect place to start and finish your day.



Computer generated image is indicative only



Computer-generated image is indicative only

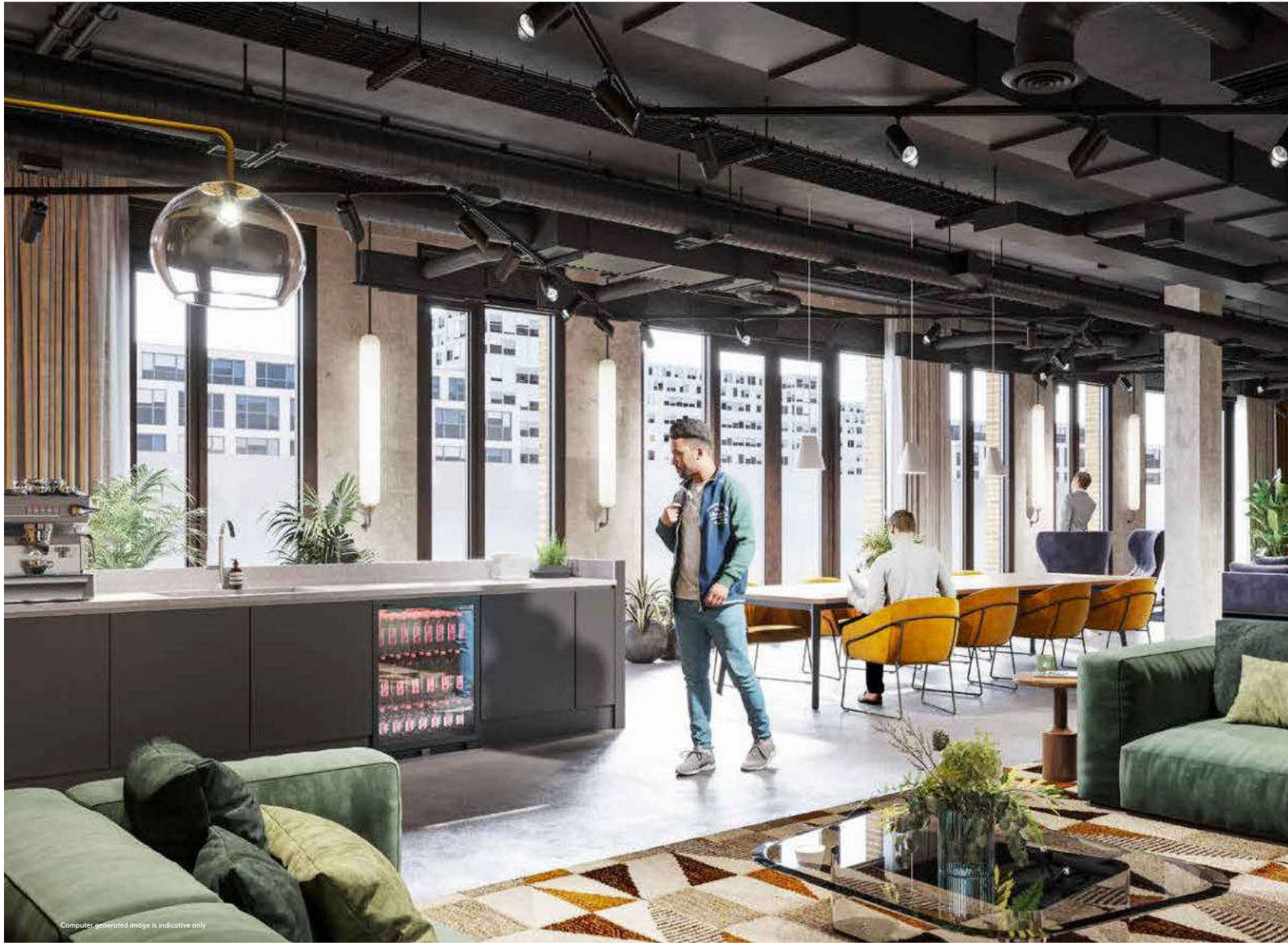


A sense  
of arrival.



If you need more space to entertain or just want to get together with other residents, the fully-equipped communal kitchen is the perfect social space to cook up a party atmosphere.

Computer-generated image is illustrative only.



Space to work  
and play.

Computer generated image is indicative only





Your own  
private gym.

A stunning  
specification.





# In touch with it all.

With bus services to the city centre, cycleways and pedestrian routes, Boulevard puts everything Birmingham has to offer within easy reach.

**Retail**

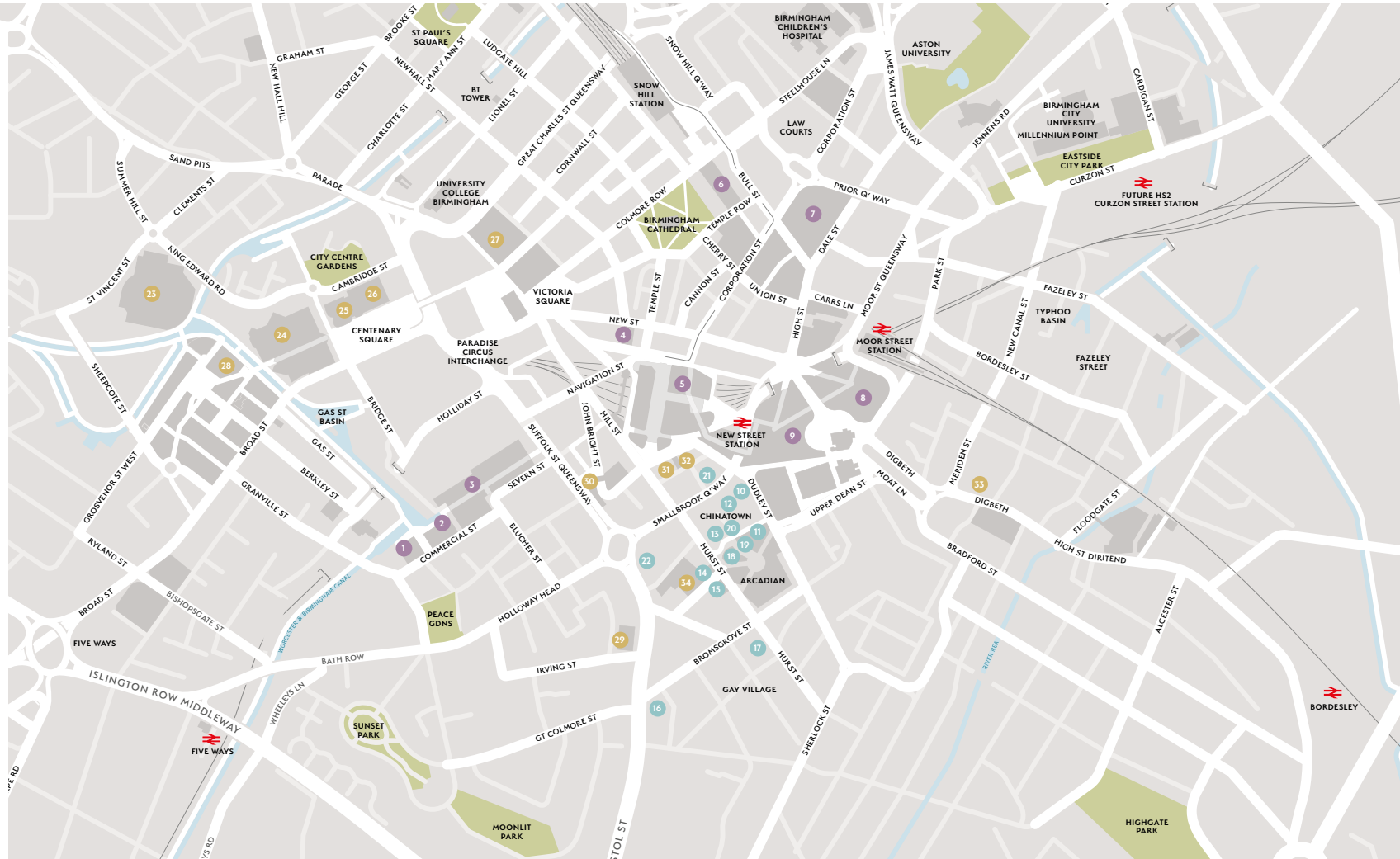
- 1 The Cube
- 2 Mailbox
- 3 Harvey Nichols
- 4 Piccadilly Arcade
- 5 Grand Central
- 6 Great Western Arcade
- 7 The Square
- 8 Selfridges
- 9 Bullring

**Chinatown and Southside  
Bars & Restaurants**

- 10 Asia Asia
- 11 Cafe Soya
- 12 China Court
- 13 Chung Ying
- 14 Ken Ho
- 15 Topokki
- 16 Gaijin Sushi
- 17 Sidewalk
- 18 The Glee Club
- 19 Sobar
- 20 Bambu
- 21 The Sunflower Lounge
- 22 Eden

**Culture**

- 23 Utilita Arena
- 24 ICC & Symphony Hall
- 25 Birmingham Repertory Theatre
- 26 The Library of Birmingham
- 27 Birmingham Museum & Art Gallery
- 28 National SeaLife Centre
- 29 O2 Academy
- 50 The Alexandra Theatre
- 51 The Electric Cinema





# A retail mecca.

## **BIRMINGHAM CHALLENGES THE CAPITAL FOR ITS OUTSTANDING RETAIL OPTIONS.**

From high fashion to high street brands, Birmingham's retail offering is second to none. At the heart of the city, Bullring & Grand Central is home to a fabulous array of retailers, restaurants and the iconic Selfridges store. Mailbox adds further choice, in addition to three-screen Everyman cinema and Harvey Nichols. For an eclectic shopping experience in Victorian splendour head to Grade II Listed Great Western Arcade, home to award-winning independent retailers.



# On the town.

**CLUBS, BARS, WORLD-CLASS CUISINE AND MUSIC AND ENTERTAINMENT VENUES AWAIT YOU. WITH NO LESS THAN FIVE MICHELIN STARRED RESTAURANTS YOU CAN ENJOY FINE DINING IN A CITY THAT'S MADE ITS INDELIBLE MARK ON THE CULINARY MAP.**



The Ivy, Gusto, chain favourites and a whole host of independents have also established themselves here, providing an almost endless list of possibilities for every occasion.

If live music's your thing, from smaller venues for intimate gigs to the Symphony Hall there's something for everyone. Take in the ballet at Birmingham Hippodrome, a comedy night at The Glee Club, or live theatre at The Alexandra Theatre.

## **Mailbox**

With a canalside setting and luxurious reputation, the restaurants in Mailbox are a favourite destination for diners. With a fantastic mix of eateries, there's a choice of cuisine from around the globe. When the sun sets, stay for drinks at one of the many alfresco bars.



## **O2 Academy Birmingham**

The premier venue at the heart of the city's nightlife, the O2 Academy is renowned for the biggest gigs and club nights.

## **The Jam House**

Big-name jazz, blues and rock acts in intimate 3-storey Georgian building with top-floor restaurant.

## **The Arcadian**

Home of nonchalant glamour, delicious flavours and endless fun. The Arcadian is the city centre's original social hotspot and its most cherished. An array of atmospheric bars and dynamic restaurants nestle harmoniously to create an utterly unique vibe.

## **The Custard Factory**

Set in 15 acres of beautifully restored Victorian factories, The Custard Factory is the heart of Birmingham's buzzing creative, social and digital district.

## HS2 - bringing the capital closer.



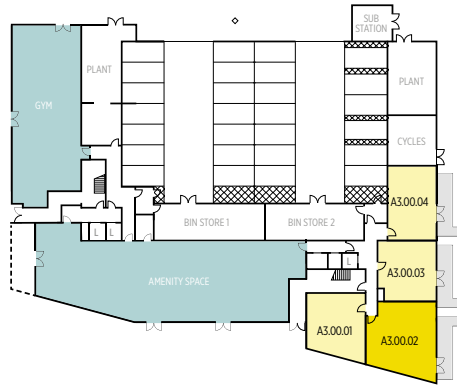
The arrival of HS2 in Birmingham is set to revolutionise travel times to London, cutting the current journey time from 84 minutes to just 52. Destinations including Manchester, Preston and Wigan will also be commutable in under 60 minutes. As the first brand new intercity terminus station to be built in Britain since the 19th century, Birmingham Curzon Street station is destined to be one of the world's most environmentally friendly stations.





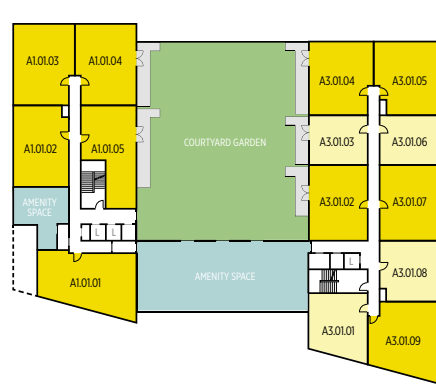
# Keyplans Floors G – 7

1 BEDROOM APARTMENT 2 BEDROOM APARTMENT



## GROUND FLOOR

- A3.00.01 1 bedroom apartment – Page 58
- A3.00.02 2 bedroom apartment – Page 59
- A3.00.03 1 bedroom apartment – Page 60
- A3.00.04 1 bedroom apartment – Page 61



## FIRST FLOOR

- A1.01.01 2 bedroom apartment – Page 68
- A1.01.02 2 bedroom apartment – Page 70
- A1.01.03 2 bedroom apartment – Page 71
- A1.01.04 2 bedroom apartment – Page 71
- A1.01.05 2 bedroom apartment – Page 72
- A3.01.01 1 bedroom apartment – Page 58
- A3.01.02 2 bedroom apartment – Page 62
- A3.01.03 1 bedroom apartment – Page 63
- A3.01.04 2 bedroom apartment – Page 64
- A3.01.05 2 bedroom apartment – Page 65
- A3.01.06 1 bedroom apartment – Page 63
- A3.01.07 2 bedroom apartment – Page 62
- A3.01.08 1 bedroom apartment – Page 60
- A3.01.09 2 bedroom apartment – Page 59



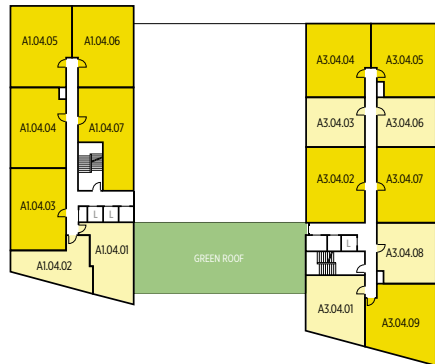
## SECOND FLOOR

- A1.02.01 2 bedroom apartment – Page 69
- A1.02.02 2 bedroom apartment – Page 73
- A1.02.03 2 bedroom apartment – Page 70
- A1.02.04 2 bedroom apartment – Page 71
- A1.02.05 2 bedroom apartment – Page 71
- A1.02.06 2 bedroom apartment – Page 72
- A2.02.01 1 bedroom apartment – Page 66
- A2.02.02 2 bedroom apartment – Page 67
- A2.02.03 1 bedroom apartment – Page 66
- A3.02.01 1 bedroom apartment – Page 58
- A3.02.02 2 bedroom apartment – Page 62
- A3.02.03 1 bedroom apartment – Page 63
- A3.02.04 2 bedroom apartment – Page 64
- A3.02.05 2 bedroom apartment – Page 65
- A3.02.06 1 bedroom apartment – Page 63
- A3.02.07 2 bedroom apartment – Page 62
- A3.02.08 1 bedroom apartment – Page 60
- A3.02.09 2 bedroom apartment – Page 59



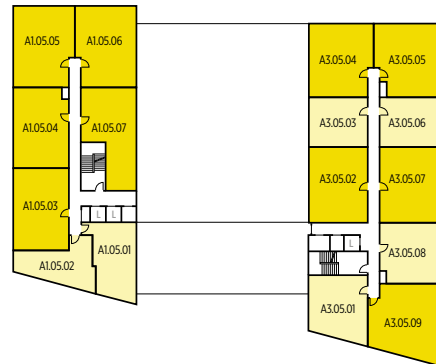
## THIRD FLOOR

- A1.03.01 2 bedroom apartment – Page 69
- A1.03.02 2 bedroom apartment – Page 73
- A1.03.03 2 bedroom apartment – Page 70
- A1.03.04 2 bedroom apartment – Page 71
- A1.03.05 2 bedroom apartment – Page 71
- A1.03.06 2 bedroom apartment – Page 72
- A2.03.01 1 bedroom apartment – Page 66
- A2.03.02 1 bedroom apartment – Page 67
- A2.03.03 1 bedroom apartment – Page 66
- A3.03.01 1 bedroom apartment – Page 58
- A3.03.02 2 bedroom apartment – Page 62
- A3.03.03 1 bedroom apartment – Page 63
- A3.03.04 2 bedroom apartment – Page 64
- A3.03.05 2 bedroom apartment – Page 65
- A3.03.06 1 bedroom apartment – Page 63
- A3.03.07 2 bedroom apartment – Page 62
- A3.03.08 1 bedroom apartment – Page 60
- A3.03.09 2 bedroom apartment – Page 59



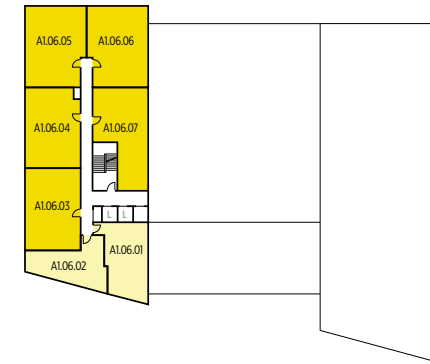
## FOURTH FLOOR

- A1.04.01 1 bedroom apartment – Page 74
- A1.04.02 1 bedroom apartment – Page 75
- A1.04.03 2 bedroom apartment – Page 73
- A1.04.04 2 bedroom apartment – Page 70
- A1.04.05 2 bedroom apartment – Page 71
- A1.04.06 2 bedroom apartment – Page 71
- A1.04.07 2 bedroom apartment – Page 72
- A3.04.01 1 bedroom apartment – Page 58
- A3.04.02 2 bedroom apartment – Page 62
- A3.04.03 1 bedroom apartment – Page 63
- A3.04.04 2 bedroom apartment – Page 64
- A3.04.05 2 bedroom apartment – Page 65
- A3.04.06 1 bedroom apartment – Page 63
- A3.04.07 2 bedroom apartment – Page 62
- A3.04.08 1 bedroom apartment – Page 60
- A3.04.09 2 bedroom apartment – Page 59



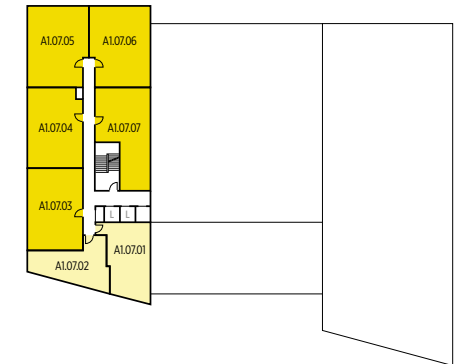
## FIFTH FLOOR

- A1.05.01 1 bedroom apartment – Page 74
- A1.05.02 1 bedroom apartment – Page 75
- A1.05.03 2 bedroom apartment – Page 73
- A1.05.04 2 bedroom apartment – Page 70
- A1.05.05 2 bedroom apartment – Page 71
- A1.05.06 2 bedroom apartment – Page 71
- A1.05.07 2 bedroom apartment – Page 72
- A3.05.01 1 bedroom apartment – Page 58
- A3.05.02 2 bedroom apartment – Page 62
- A3.05.03 1 bedroom apartment – Page 63
- A3.05.04 2 bedroom apartment – Page 64
- A3.05.05 2 bedroom apartment – Page 65
- A3.05.06 1 bedroom apartment – Page 63
- A3.05.07 2 bedroom apartment – Page 62
- A3.05.08 1 bedroom apartment – Page 60
- A3.05.09 2 bedroom apartment – Page 59



## SIXTH FLOOR

- A1.06.01 1 bedroom apartment – Page 74
- A1.06.02 1 bedroom apartment – Page 75
- A1.06.03 2 bedroom apartment – Page 73
- A1.06.04 2 bedroom apartment – Page 70
- A1.06.05 2 bedroom apartment – Page 71
- A1.06.06 2 bedroom apartment – Page 71
- A1.06.07 2 bedroom apartment – Page 72



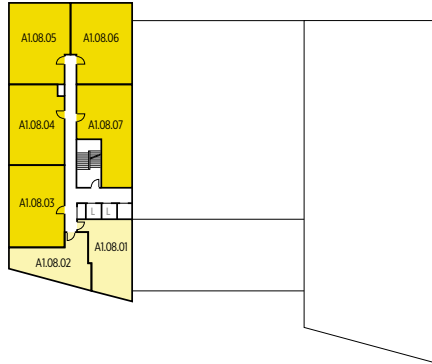
## SEVENTH FLOOR

- A1.07.01 1 bedroom apartment – Page 74
- A1.07.02 1 bedroom apartment – Page 75
- A1.07.03 2 bedroom apartment – Page 73
- A1.07.04 2 bedroom apartment – Page 70
- A1.07.05 2 bedroom apartment – Page 71
- A1.07.06 2 bedroom apartment – Page 71
- A1.07.07 2 bedroom apartment – Page 72



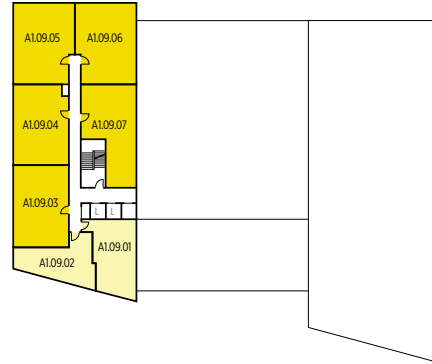
# Keyplans Floors 8 – 14

1 BEDROOM APARTMENT
  2 BEDROOM APARTMENT



**EIGHTH FLOOR**

- A1.08.01** 1 bedroom apartment – Page 74
- A1.08.02** 1 bedroom apartment – Page 75
- A1.08.03** 2 bedroom apartment – Page 73
- A1.08.04** 2 bedroom apartment – Page 70
- A1.08.05** 2 bedroom apartment – Page 71
- A1.08.06** 2 bedroom apartment – Page 71
- A1.08.07** 2 bedroom apartment – Page 72



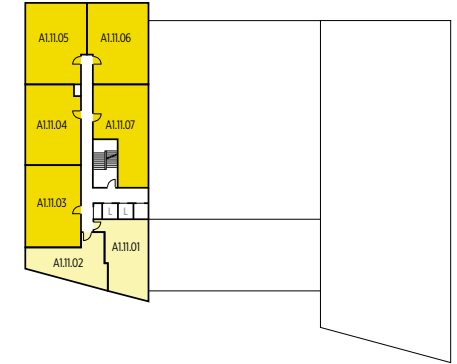
**NINTH FLOOR**

- A1.09.01** 1 bedroom apartment – Page 74
- A1.09.02** 1 bedroom apartment – Page 75
- A1.09.03** 2 bedroom apartment – Page 73
- A1.09.04** 2 bedroom apartment – Page 70
- A1.09.05** 2 bedroom apartment – Page 71
- A1.09.06** 2 bedroom apartment – Page 71
- A1.09.07** 2 bedroom apartment – Page 72



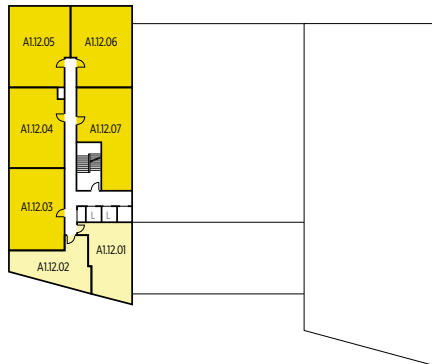
**TENTH FLOOR**

- A1.10.01** 1 bedroom apartment – Page 74
- A1.10.02** 1 bedroom apartment – Page 75
- A1.10.03** 2 bedroom apartment – Page 73
- A1.10.04** 2 bedroom apartment – Page 70
- A1.10.05** 2 bedroom apartment – Page 71
- A1.10.06** 2 bedroom apartment – Page 71
- A1.10.07** 2 bedroom apartment – Page 72



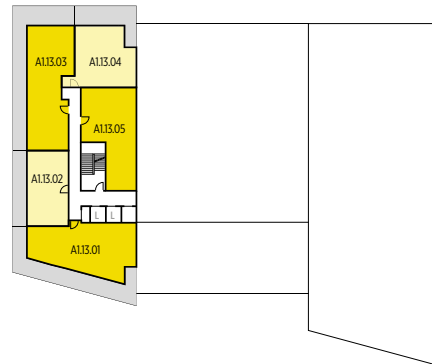
**ELEVENTH FLOOR**

- A1.11.01** 1 bedroom apartment – Page 74
- A1.11.02** 1 bedroom apartment – Page 75
- A1.11.03** 2 bedroom apartment – Page 73
- A1.11.04** 2 bedroom apartment – Page 70
- A1.11.05** 2 bedroom apartment – Page 71
- A1.11.06** 2 bedroom apartment – Page 71
- A1.11.07** 2 bedroom apartment – Page 72



**TWELFTH FLOOR**

- A1.12.01** 1 bedroom apartment – Page 74
- A1.12.02** 1 bedroom apartment – Page 75
- A1.12.03** 2 bedroom apartment – Page 73
- A1.12.04** 2 bedroom apartment – Page 70
- A1.12.05** 2 bedroom apartment – Page 71
- A1.12.06** 2 bedroom apartment – Page 71
- A1.12.07** 2 bedroom apartment – Page 72



**THIRTEENTH FLOOR - PENTHOUSE APARTMENTS WITH TERRACES**

- A1.13.01** 2 bedroom apartment – Page 76
- A1.13.02** 1 bedroom apartment – Page 77
- A1.13.03** 2 bedroom apartment – Page 78
- A1.13.04** 1 bedroom apartment – Page 79
- A1.13.05** 2 bedroom apartment – Page 72



**FOURTEENTH FLOOR - PENTHOUSE APARTMENTS**

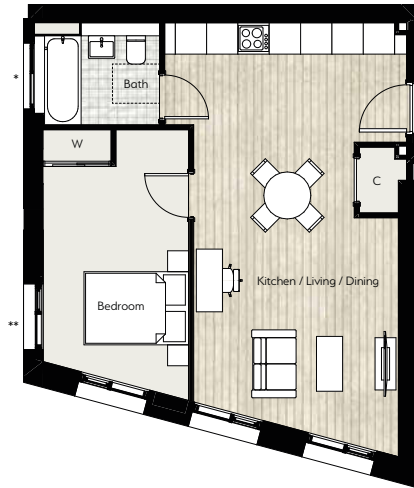
- A1.14.01** 2 bedroom apartment – Page 76
- A1.14.02** 1 bedroom apartment – Page 77
- A1.14.03** 2 bedroom apartment – Page 78
- A1.14.04** 1 bedroom apartment – Page 79
- A1.14.05** 2 bedroom apartment – Page 72



# Type 01 1 bedroom apartment

## Plots

- A3.00.01** Ground floor
- A3.01.01** 1st floor
- A3.02.01** 2nd floor
- A3.03.01** 3rd floor
- A3.04.01** 4th floor
- A3.05.01** 5th floor



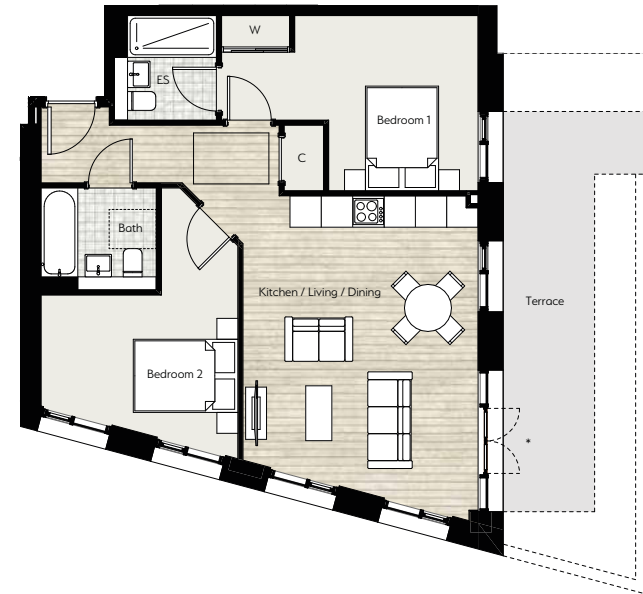
\* Window to plots A3.04.01 & A3.05.01  
 \*\* Window to plots A3.01.01 to A3.05.01

Internal Area (approx)    50.6 sq m            545 sq ft

# Type 02 2 bedroom apartment

## Plots

- A3.00.02** Ground floor
- A3.01.09** 1st floor
- A3.02.09** 2nd floor
- A3.03.09** 3rd floor
- A3.04.09** 4th floor
- A3.05.09** 5th floor



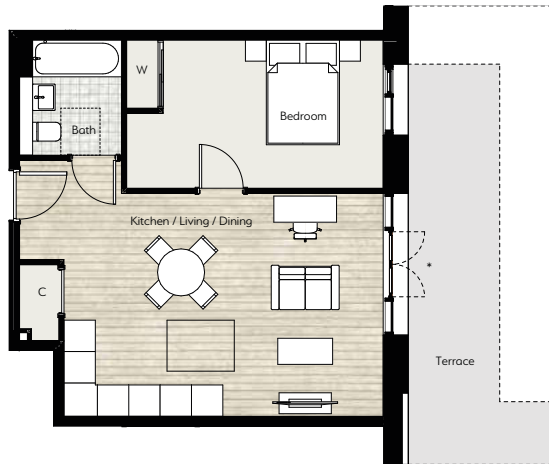
\* French doors and terrace to A3.00.02 only

Internal Area (approx)    69.3 sq m            746 sq ft

## Type 03 1 bedroom apartment

### Plots

- A3.00.03 Ground floor
- A3.01.08 1st floor
- A3.02.08 2nd floor
- A3.03.08 3rd floor
- A3.04.08 4th floor
- A3.05.08 5th floor



\* French doors and terrace to A3.00.03 only

Internal Area (approx) 48.5 sq m 522 sq ft

## Type 04 1 bedroom apartment

### Plot

- A3.00.04 Ground floor



Internal Area (approx) 52.2 sq m 562 sq ft

## Type 05 2 bedroom apartment

**Plots as shown**

- A3.01.02 1st floor
- A3.02.02 2nd floor
- A3.03.02 3rd floor
- A3.04.02 4th floor
- A3.05.02 5th floor

**Mirrored**

- A3.01.07 1st floor
- A3.02.07 2nd floor
- A3.03.07 3rd floor
- A3.04.07 4th floor
- A3.05.07 5th floor



\* French doors and balcony to A3.01.02 only

Internal Area (approx) 62.8 sq m 676 sq ft

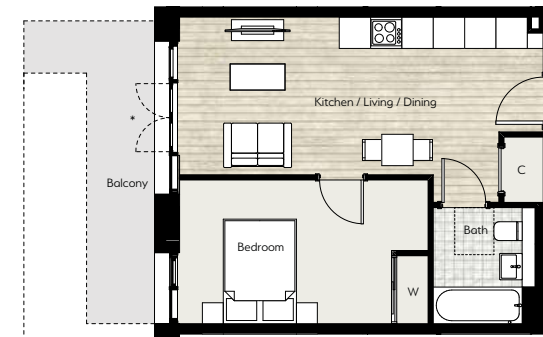
## Type 06 1 bedroom apartment

**Plots as shown**

- A3.01.03 1st floor
- A3.02.03 2nd floor
- A3.03.03 3rd floor
- A3.04.03 4th floor
- A3.05.03 5th floor

**Mirrored**

- A3.01.06 1st floor
- A3.02.06 2nd floor
- A3.03.06 3rd floor
- A3.04.06 4th floor
- A3.05.06 5th floor



\* French doors and balcony to A3.01.03 only

Internal Area (approx) 40.5sq m 436 sq ft

## Type 07 2 bedroom apartment

### Plots

- A3.01.04 1st floor
- A3.02.04 2nd floor
- A3.03.04 3rd floor
- A3.04.04 4th floor
- A3.05.04 5th floor



\* French doors and balcony to A3.01.04 only

Internal Area (approx) 64.2 sq m 691 sq ft

## Type 08 2 bedroom apartment

### Plots

- A3.01.05 1st floor
- A3.02.05 2nd floor
- A3.03.05 3rd floor
- A3.04.05 4th floor
- A3.05.05 5th floor



Internal Area (approx) 61.5 sq m 662 sq ft

## Type 09 1 bedroom apartment

Plot as shown

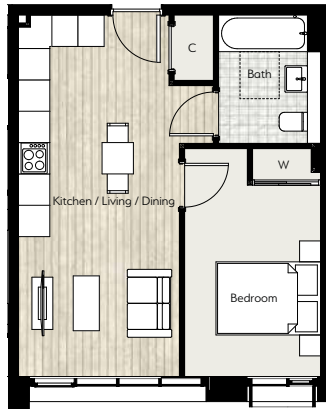
A2.02.01 2nd floor

A2.03.01 3rd floor

Mirrored

A2.02.03 2nd floor

A2.03.03 3rd floor



Internal Area (approx) 39.6 sq m 426 sq ft

## Type 10 2 bedroom apartment

Plot

A2.02.02 2nd floor

A2.03.02 3rd floor



Internal Area (approx) 59.9 sq m 645 sq ft

# Type 11 2 bedroom apartment

Plot  
A1.01.01 1st floor



Internal Area (approx) 78.8 sq m 848 sq ft

# Type 12 2 bedroom apartment

Plots  
A1.02.01 2nd floor  
A1.03.01 3rd floor

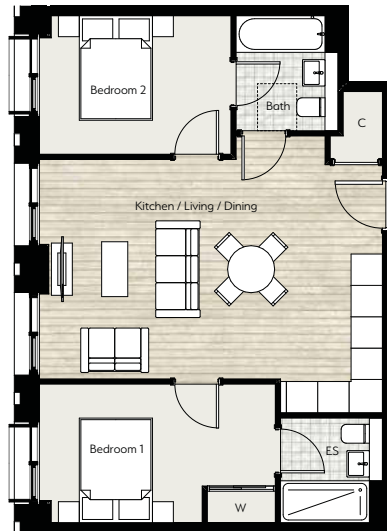


Internal Area (approx) 78.8 sq m 848 sq ft

## Type 13 2 bedroom apartment

### Plots

- A1.01.02 1st floor
- A1.02.03 2nd floor
- A1.03.03 3rd floor
- A1.04.04 4th floor
- A1.05.04 5th floor
- A1.06.04 6th floor
- A1.07.04 7th floor
- A1.08.04 8th floor
- A1.09.04 9th floor
- A1.10.04 10th floor
- A1.11.04 11th floor
- A1.12.04 12th floor



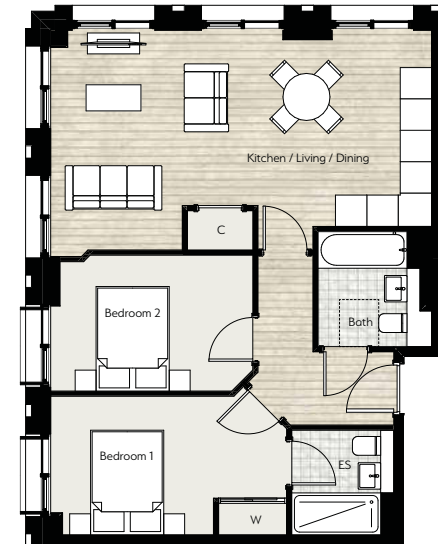
Internal Area (approx) 62.1 sq m 668 sq ft

## Type 14 2 bedroom apartment

### Plots

- A1.01.03 1st floor
- A1.02.04 2nd floor
- A1.03.04 3rd floor
- A1.04.05 4th floor
- A1.05.05 5th floor
- A1.06.05 6th floor
- A1.07.05 7th floor
- A1.08.05 8th floor
- A1.09.05 9th floor
- A1.10.05 10th floor
- A1.11.05 11th floor
- A1.12.05 12th floor

Internal Area (approx) 67.1 sq m 722 sq ft



### Plots

- A1.01.04 1st floor
- A1.02.05 2nd floor
- A1.03.05 3rd floor
- A1.04.06 4th floor
- A1.05.06 5th floor
- A1.06.06 6th floor
- A1.07.06 7th floor
- A1.08.06 8th floor
- A1.09.06 9th floor
- A1.10.06 10th floor
- A1.11.06 11th floor
- A1.12.06 12th floor

Internal Area (approx) 66.3 sq m 714 sq ft

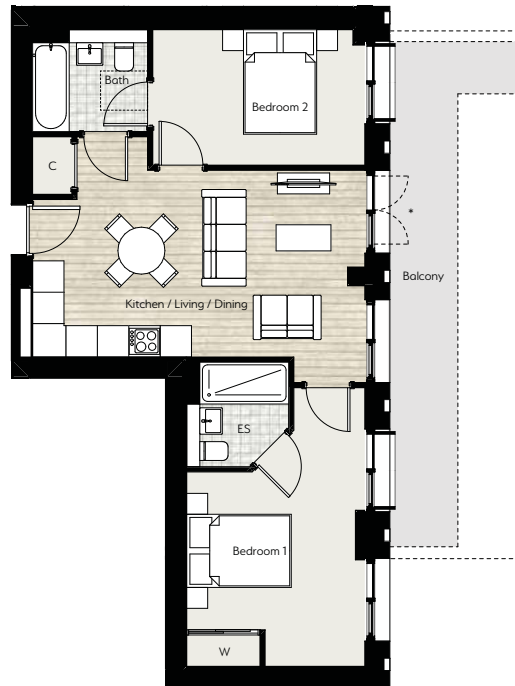
\* French doors and balcony to A1.01.04 only



## Type 15 2 bedroom apartment

### Plots

- A1.01.05 1st floor
- A1.02.06 2nd floor
- A1.03.06 3rd floor
- A1.04.07 4th floor
- A1.05.07 5th floor
- A1.06.07 6th floor
- A1.07.07 7th floor
- A1.08.07 8th floor
- A1.09.07 9th floor
- A1.10.07 10th floor
- A1.11.07 11th floor
- A1.12.07 12th floor
- A1.13.05 13th floor
- A1.14.05 14th floor



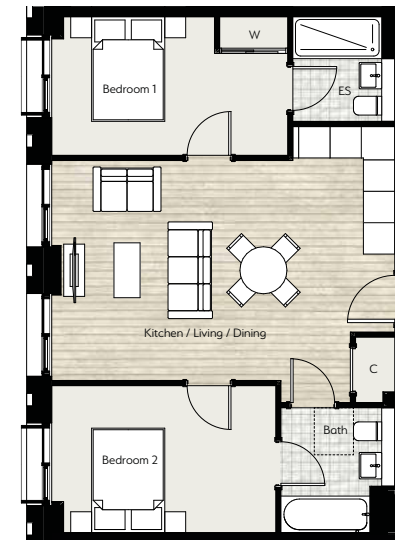
\* French doors and balcony to A1.01.05 only

Internal Area (approx) 60.9 sq m 655 sq ft

## Type 16 2 bedroom apartment

### Plots

- A1.02.02 2nd floor
- A1.03.02 3rd floor
- A1.04.03 4th floor
- A1.05.03 5th floor
- A1.06.03 6th floor
- A1.07.03 7th floor
- A1.08.03 8th floor
- A1.09.03 9th floor
- A1.10.03 10th floor
- A1.11.03 11th floor
- A1.12.03 12th floor



Internal Area (approx) 64.3 sq m 692 sq ft

## Type 17 1 bedroom apartment

### Plots

- A1.04.01 4th floor
- A1.05.01 5th floor
- A1.06.01 6th floor
- A1.07.01 7th floor
- A1.08.01 8th floor
- A1.09.01 9th floor
- A1.10.01 10th floor
- A1.11.01 11th floor
- A1.12.01 12th floor



Internal Area (approx) 46.0 sq m 495 sq ft

## Type 18 1 bedroom apartment

### Plots

- A1.04.02 4th floor
- A1.05.02 5th floor
- A1.06.02 6th floor
- A1.07.02 7th floor
- A1.08.02 8th floor
- A1.09.02 9th floor
- A1.10.02 10th floor
- A1.11.02 11th floor
- A1.12.02 12th floor



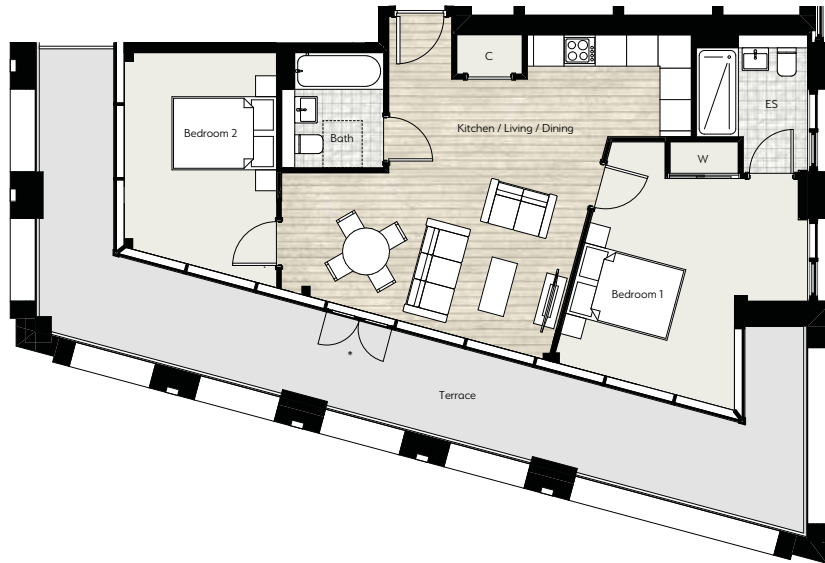
Internal Area (approx) 39.7 sq m 427 sq ft

## Type 19 2 bedroom apartment

### Plots

A1.13.01 13th floor

A1.14.01 14th floor



\* French doors and terrace to A1.13.01 only

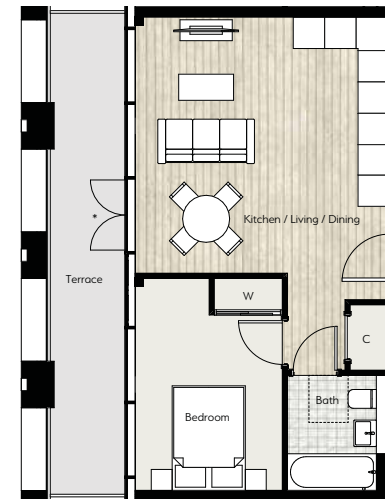
Internal Area (approx) 711 sq m 765 sq ft

## Type 20 1 bedroom apartment

### Plots

A1.13.02 13th floor

A1.14.02 14th floor



\* French doors and terrace to A1.13.02 only

Internal Area (approx) 43.9 sq m 472 sq ft

## Type 21 2 bedroom apartment

### Plots

A1.13.03 13th floor

A1.14.03 14th floor



\* French doors and terrace to A1.13.03 only

Internal Area (approx) 74.4 sq m 801 sq ft

## Type 22 1 bedroom apartment

### Plots

A1.13.04 13th floor

A1.14.04 14th floor



\* French doors and terrace to A1.13.04 only

Internal Area (approx) 60.9 sq m 551 sq ft



Heathside, Levensham, London



South Bank Towers, London



Kingland House, Poole, Dorset



Lancaster Street, Birmingham