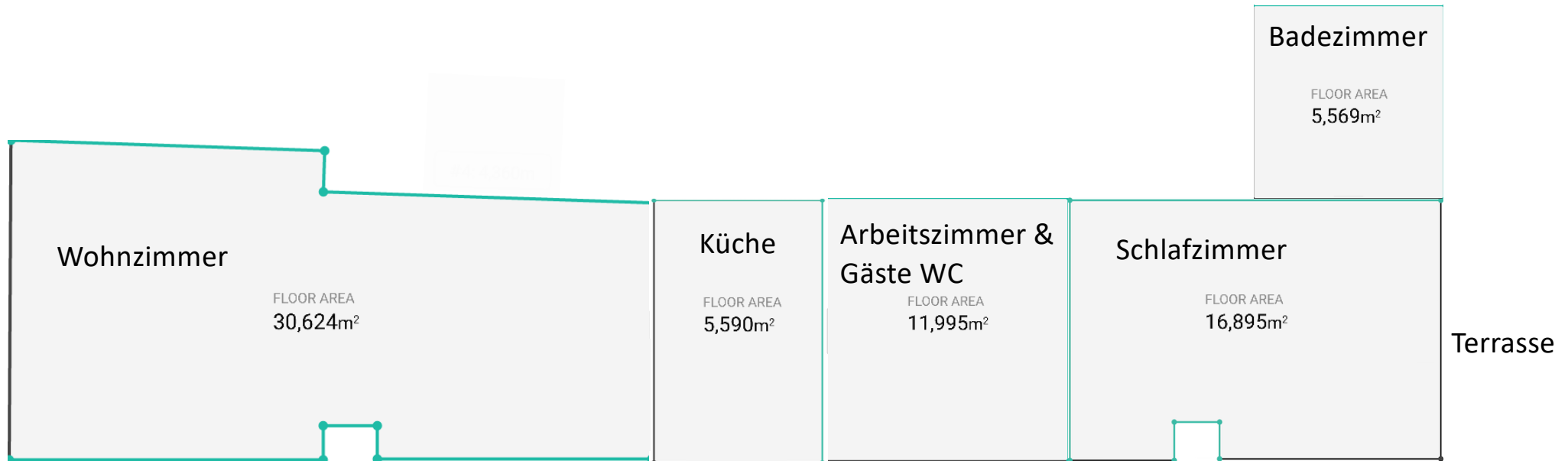
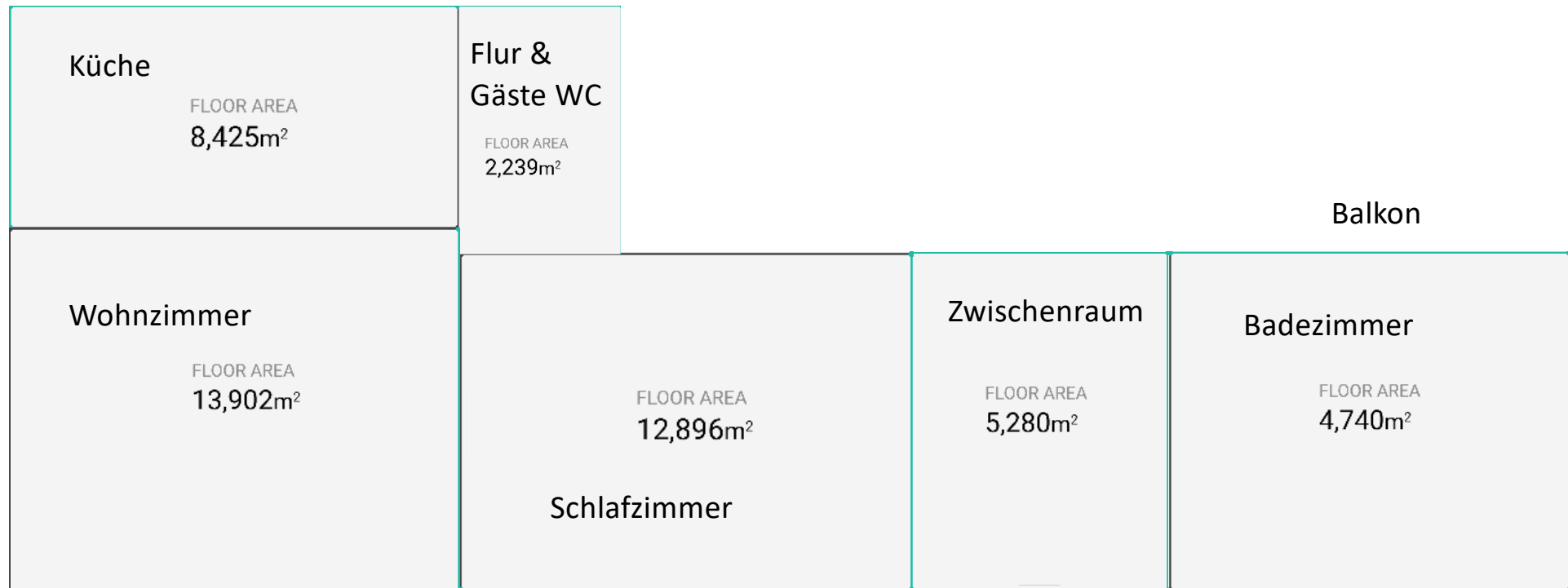


Grundriss EG



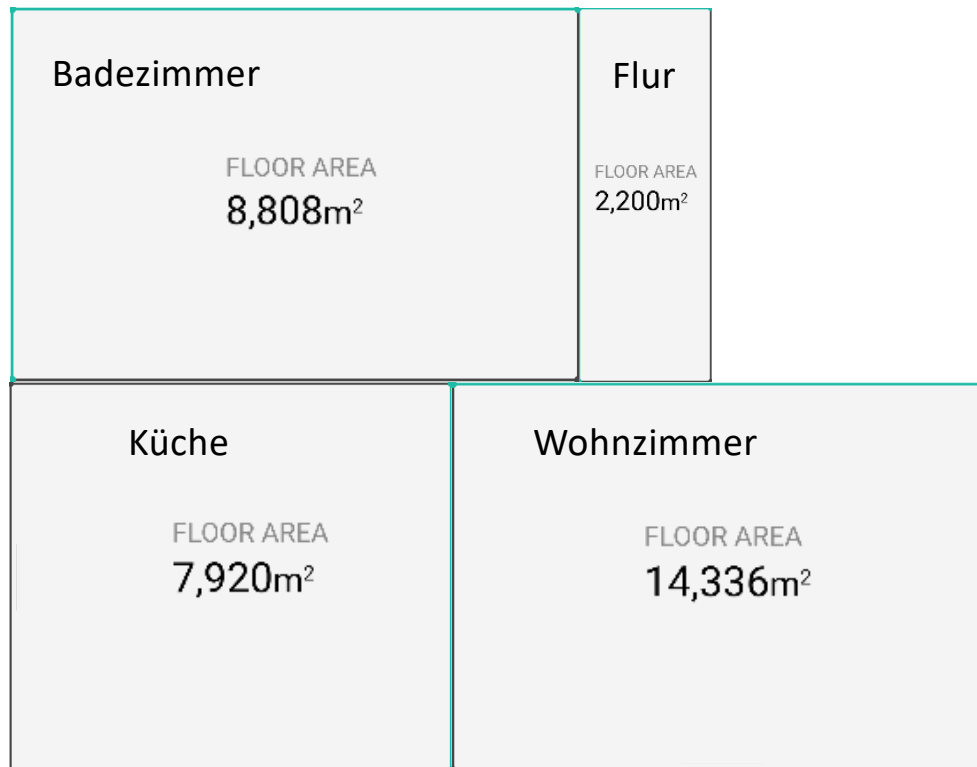
Gesamt: 70,67 m²

Grundriss 1. OG



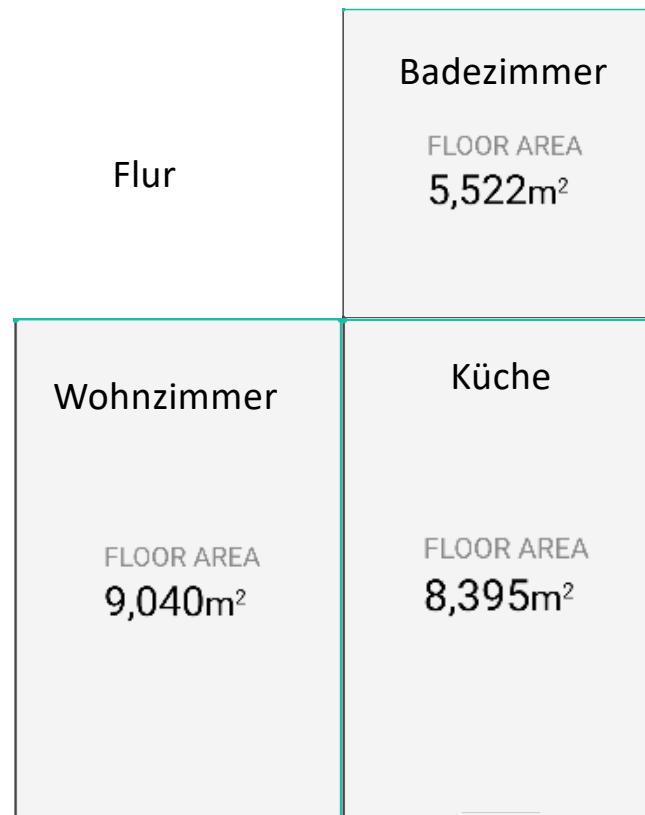
Gesamt: 47,48 m²

Grundriss 2. OG



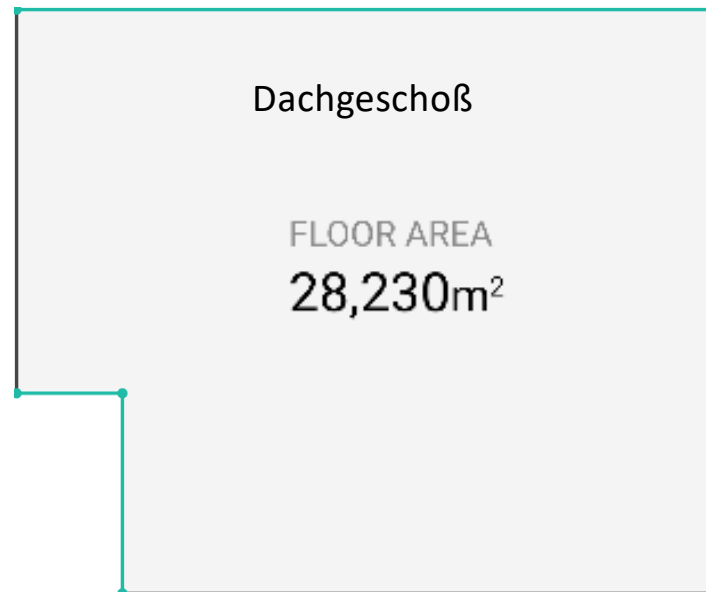
Gesamt: 33,26 m²

Grundriss 1. OG - Anbau



Gesamt: 22,96 m²

Grundriss DG - Anbau



Gesamt: 28,23 m²