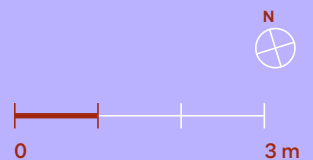
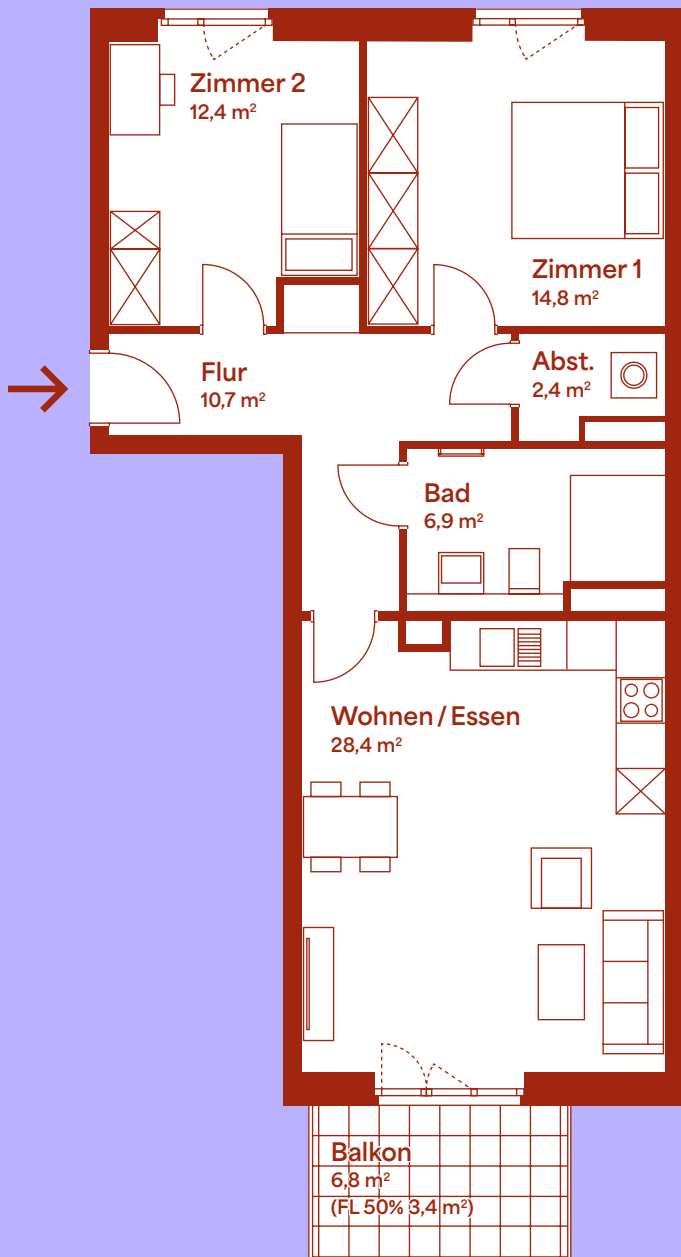


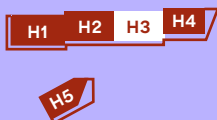
Wohneinheit 46

3. Obergeschoss | Haus 3 | 3 Zimmer

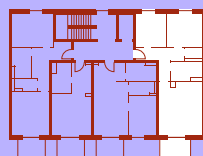
ROTEN BLEICHER



LAGEPLAN



3. OBERGESCHOSS



ANSICHT WEST



Zimmer 1	14,8 m ²
Zimmer 2	12,4 m ²
Abstellraum	2,4 m ²
Flur	10,7 m ²
Bad	6,9 m ²
Wohnen / Essen	28,4 m ²
Balkon (50%)	3,4 m ²
Grundfläche ca.	79,0 m²