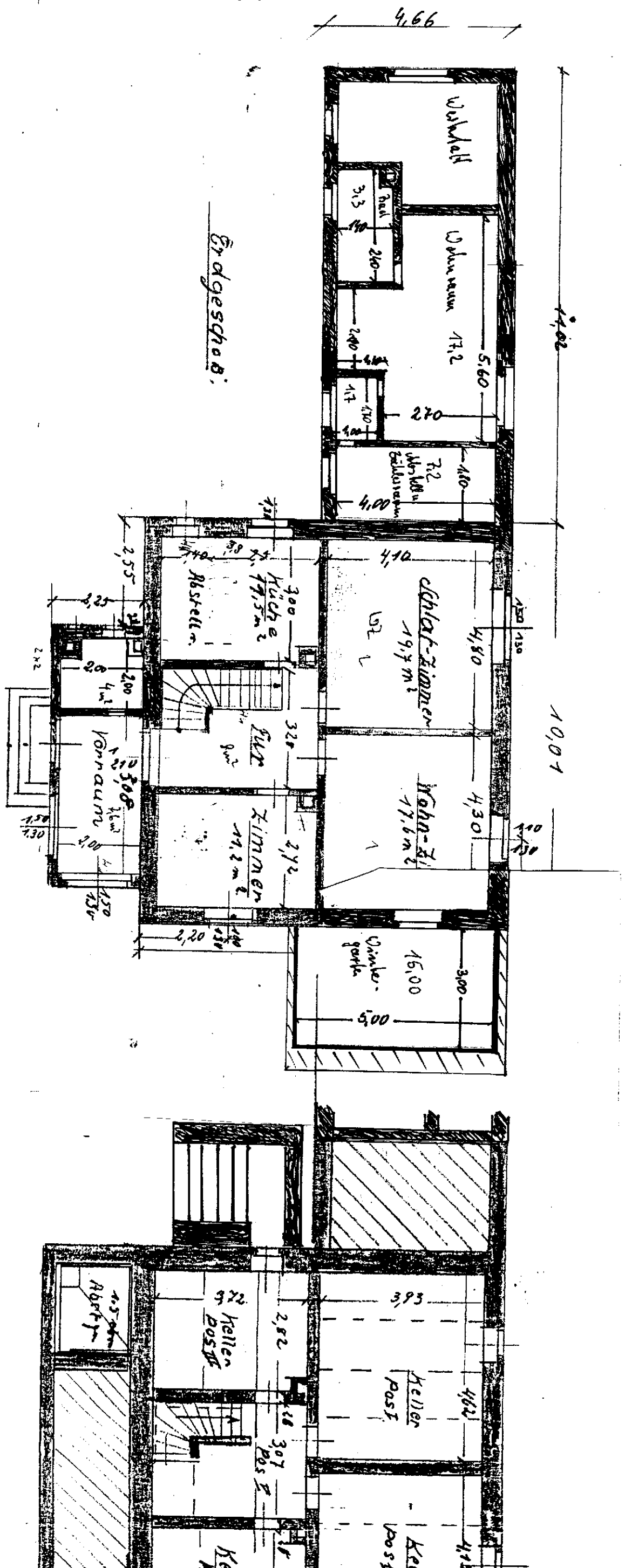


Hof-Ansicht

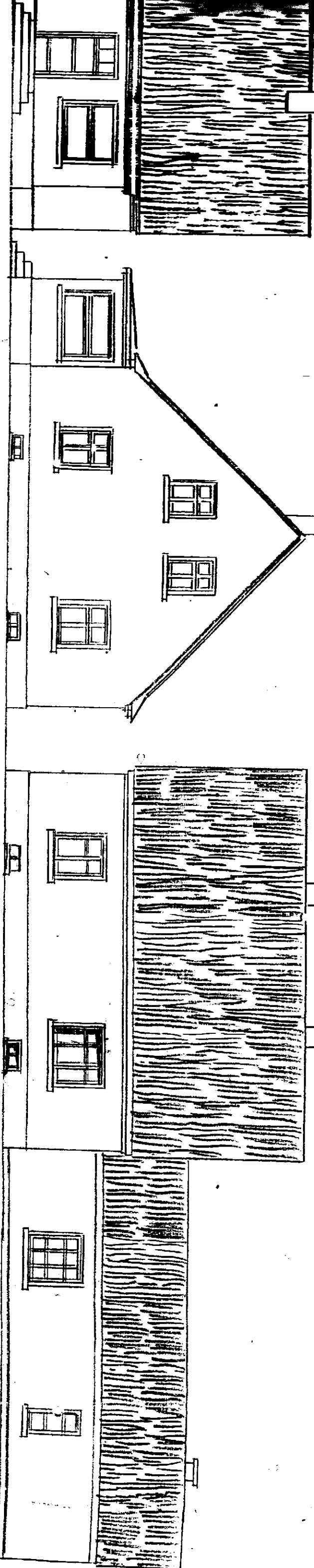
Straßen-Ansicht



Erdgeschoss

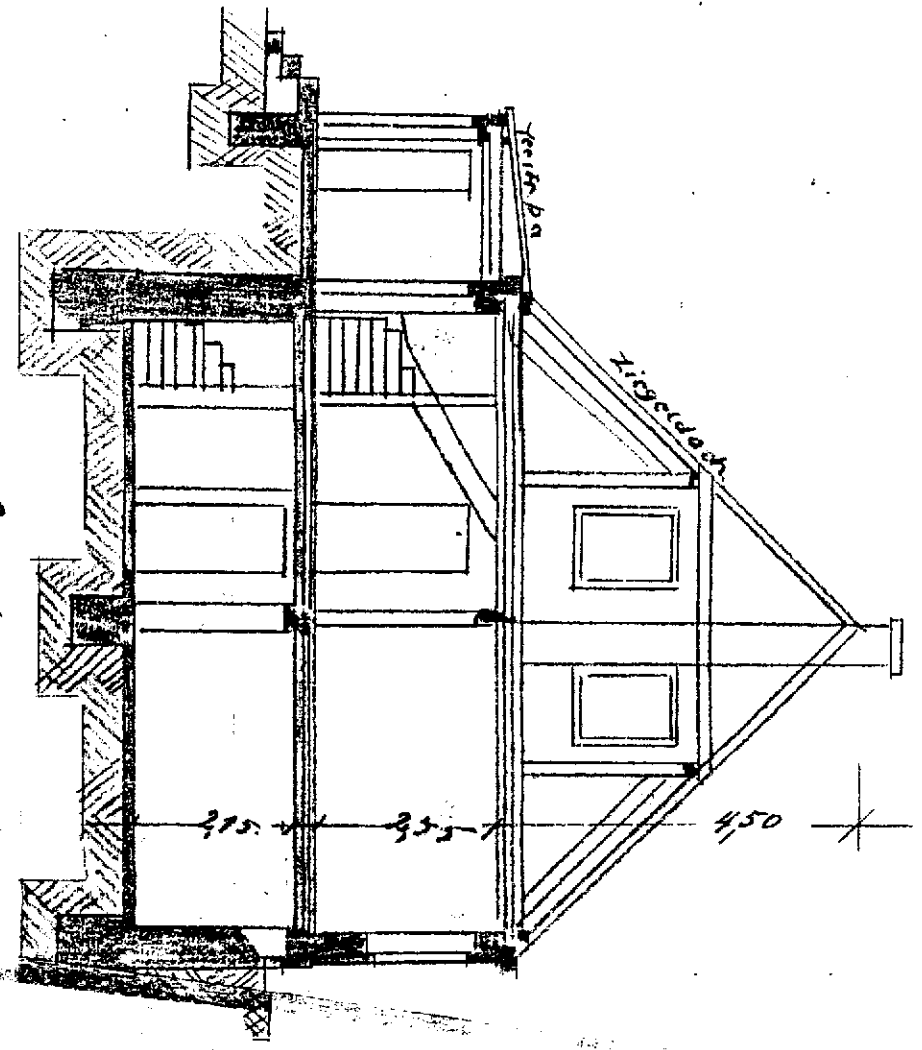
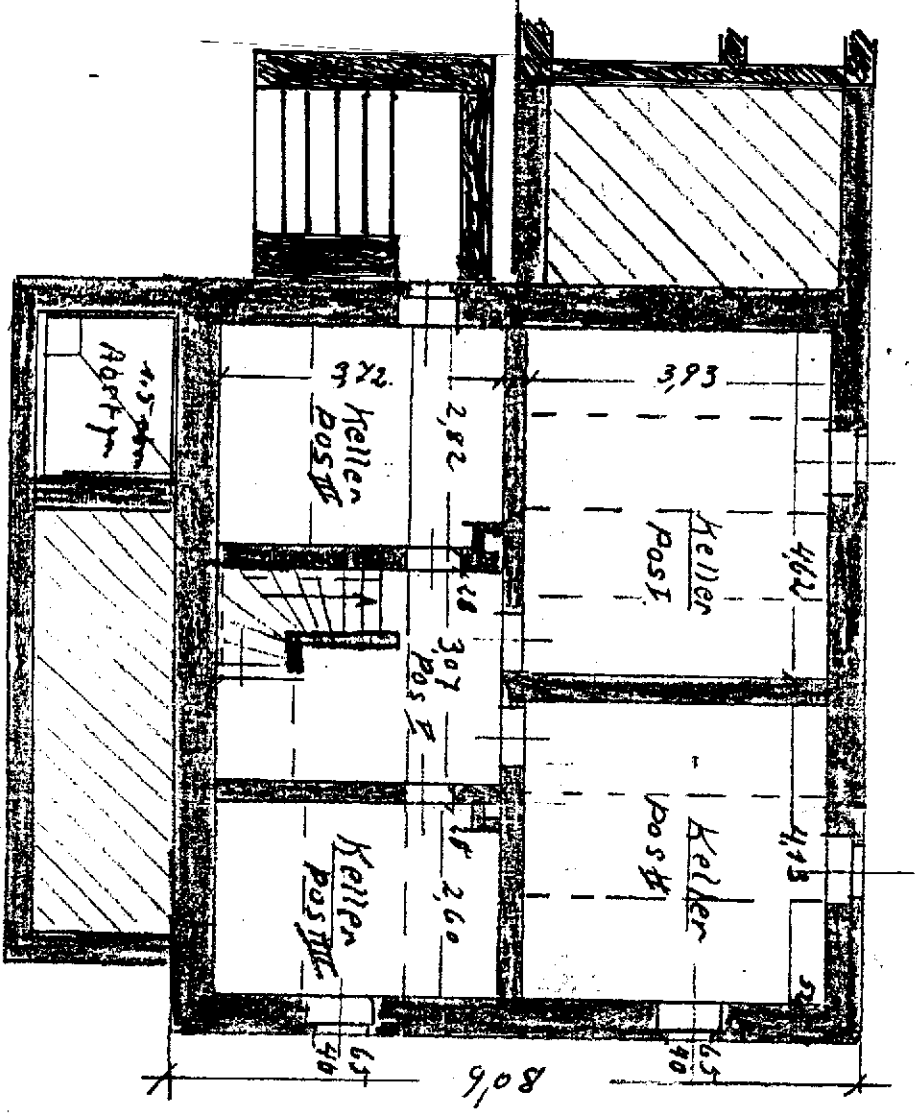
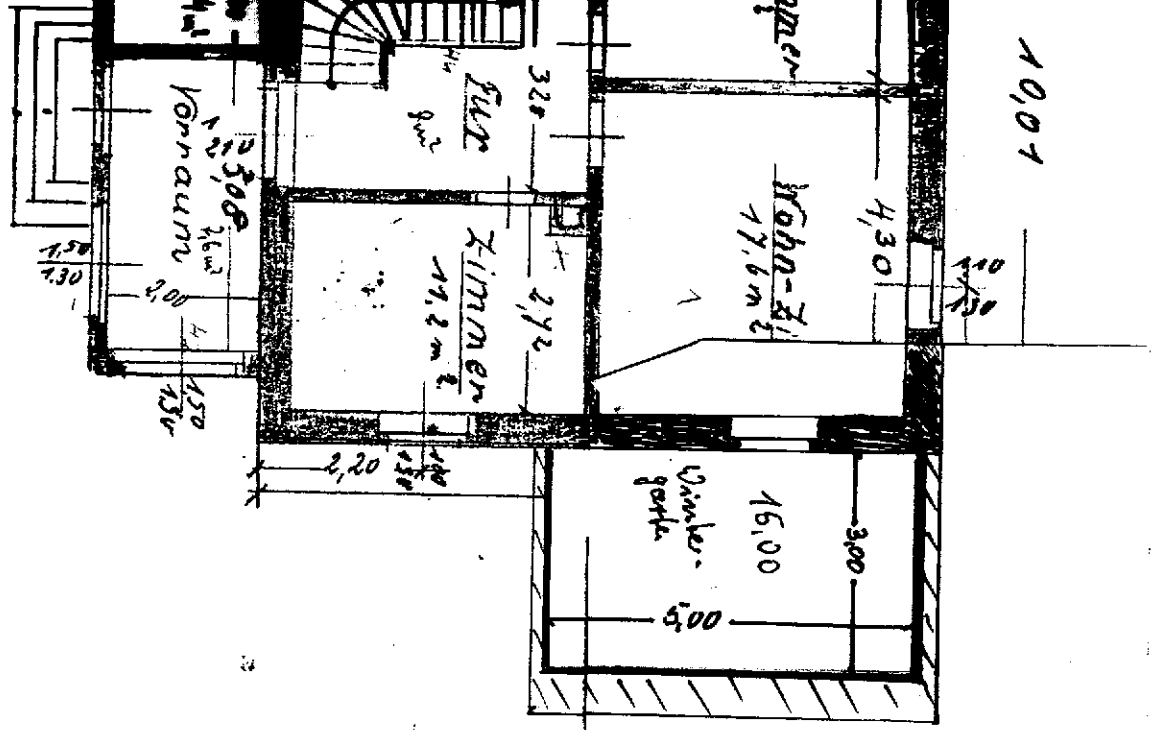
Bauherr:  
Schwernitz, d. 21. 6. 1937

Ausführender u. Leiter:



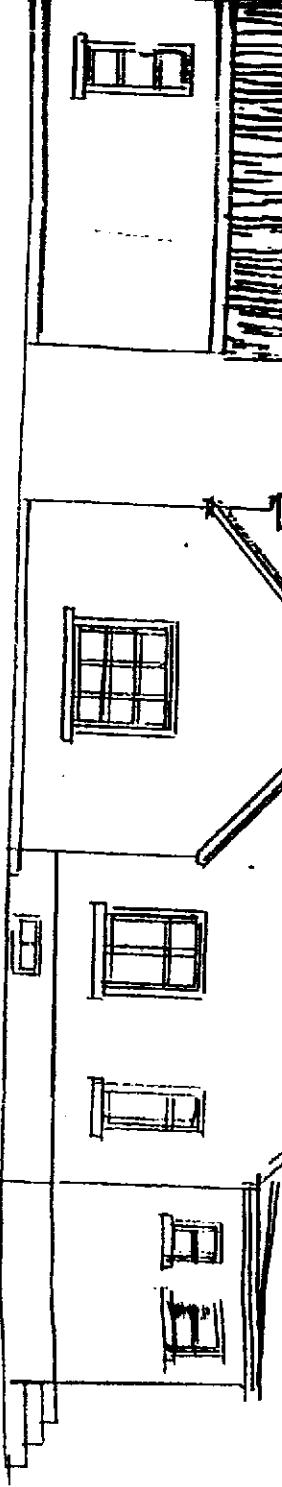
Straßen-Ansicht

Seiten-Ansicht

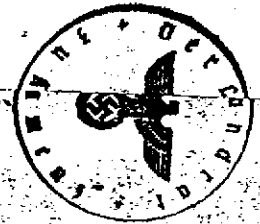
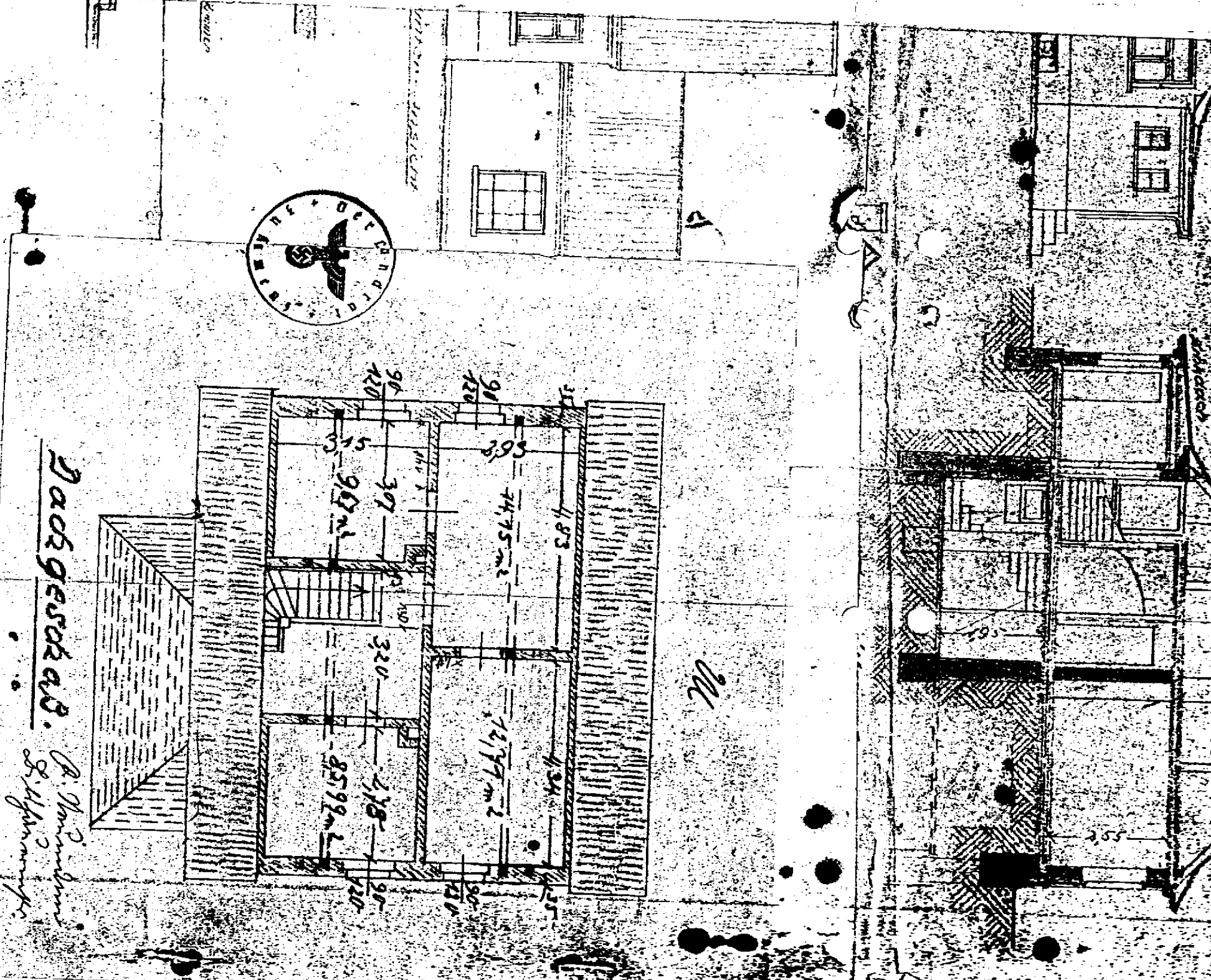
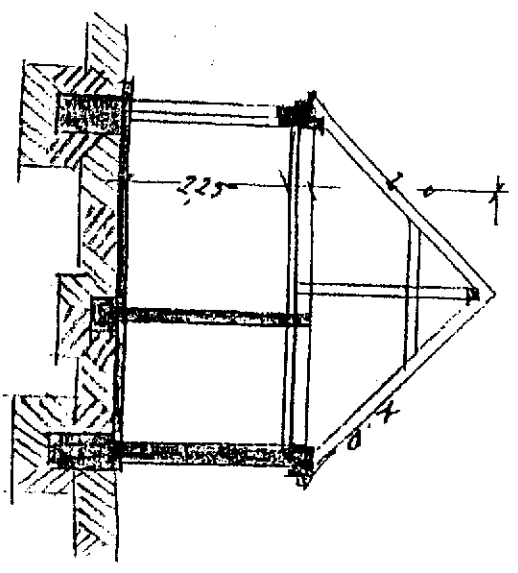


Ausführender u. Leiter:

Hinter-Ansicht



Schnitt



PaßgeschäB.

P. Wundt  
S. Wundt

14,75 m<sup>2</sup>

12,77 m<sup>2</sup>

9,87 m<sup>2</sup>

2,18

85,99 m<sup>2</sup>

4,83

1,24

96

120

96

120

35

303

14,75 m<sup>2</sup>

1,24

12,77 m<sup>2</sup>

35

120

320

2,18

85,99 m<sup>2</sup>

120

96

120

W