



AM TEGELER SEE

HAUS 1 | WOHNUNG 1.0.1

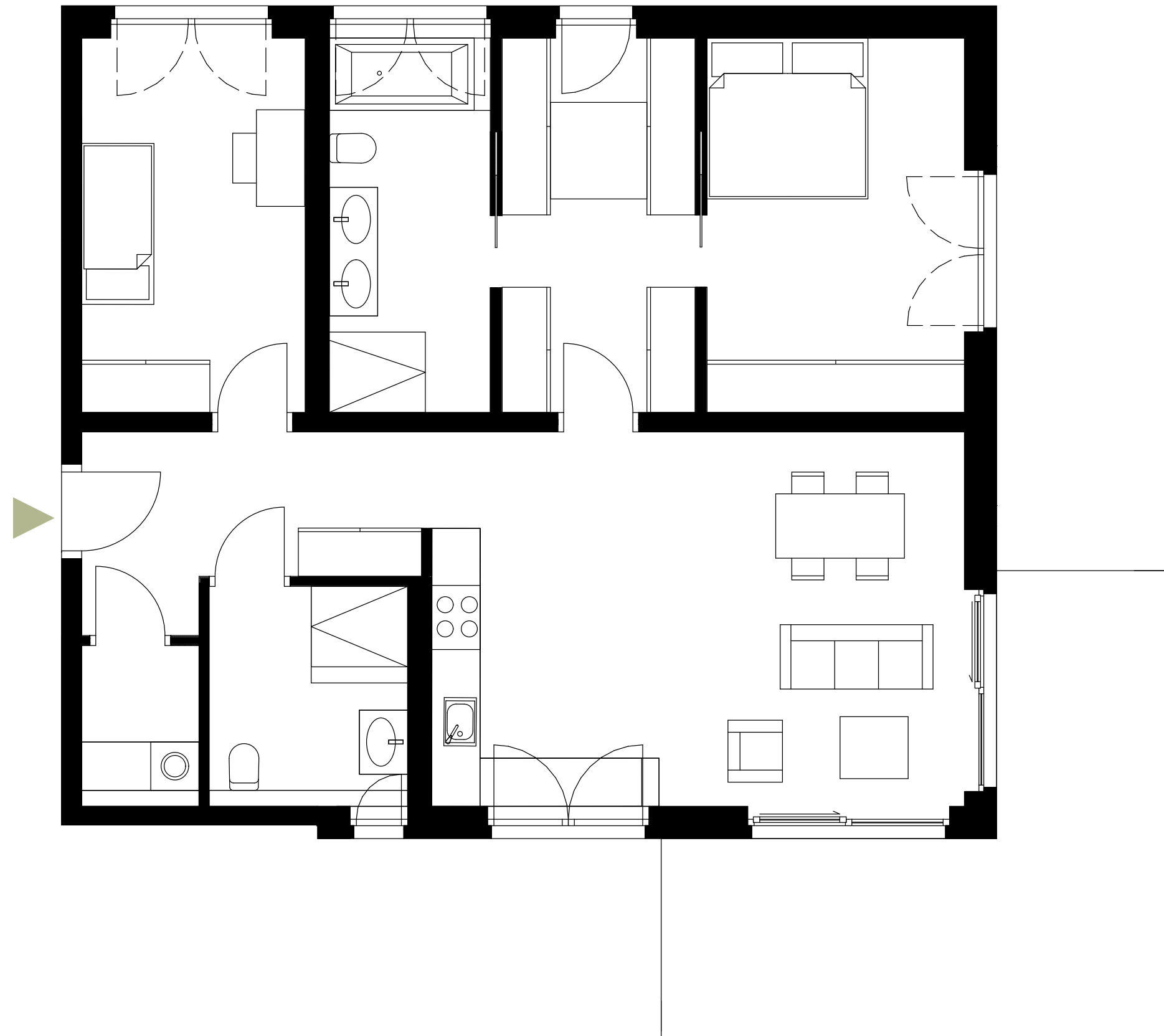
HOUSE 1 | APARTMENT 1.0.1

3 Zimmer | Erdgeschoss links
Gartenterrasse & Privatgarten (SNR) | Barrierefrei

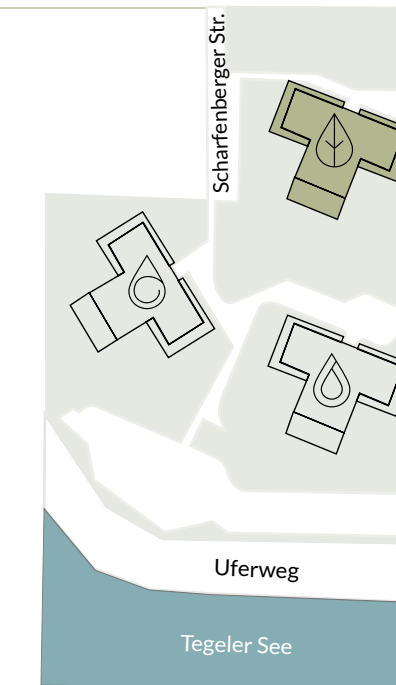
2 bedrooms | ground floor left
Garden terrace & private garden (SNR) | accessible

*KAUFPREIS: € 929.000

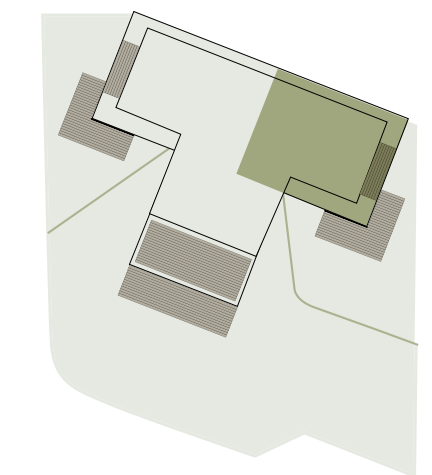
*PURCHASE PRICE: € 929,000



Lageplan | site plan



Lage im Gebäude | position in building



Eingang entrance	ca./approx.	3,69	m ² sqm
Flur corridor	ca./approx.	4,97	m ² sqm
Wohnen-Kochen-Essen living, cooking, dining	ca./approx.	31,68	m ² sqm
Schlafzimmer bedroom	ca./approx.	15,22	m ² sqm
Ankleide dressing room	ca./approx.	11,33	m ² sqm
En-Suite Bad en-suite bathroom	ca./approx.	9,31	m ² sqm
Zimmer 1 room 1	ca./approx.	13,28	m ² sqm
Bad bathroom	ca./approx.	6,74	m ² sqm
HWR utility room	ca./approx.	2,92	m ² sqm
Terrasse (50%) terrace (50%)	ca./approx.	11,92	m ² sqm

Gesamtwohnfläche ca. | total living space approx. ca./approx. 111,06 m² | sqm


Privatgarten (SNR) | private garden (SNR)
138,59 sqm