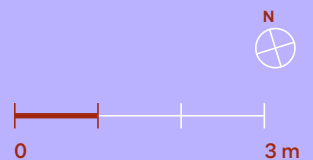
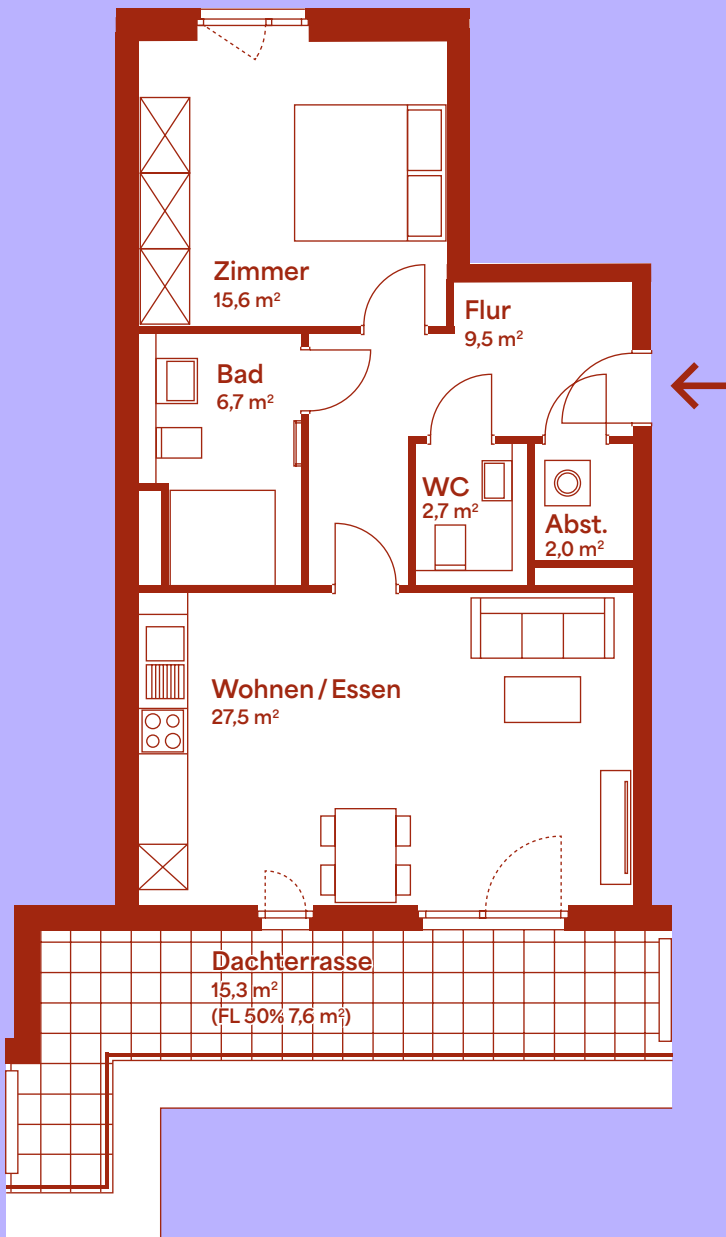


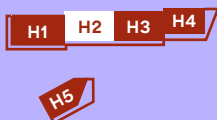
# Wohneinheit 33

4. Obergeschoss | Haus 2 | 2 Zimmer

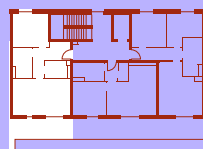
# ROTEN BLEICHER



LAGEPLAN



4. OBERGESCHOSS



ANSICHT WEST



Zimmer	15,6 m <sup>2</sup>
Flur	9,5 m <sup>2</sup>
Bad	6,7 m <sup>2</sup>
Abstellraum	2,0 m <sup>2</sup>
WC	2,7 m <sup>2</sup>
Wohnen / Essen	27,5 m <sup>2</sup>
Dachterrasse (50%)	7,6 m <sup>2</sup>
<b>Grundfläche ca.</b>	<b>71,6 m<sup>2</sup></b>