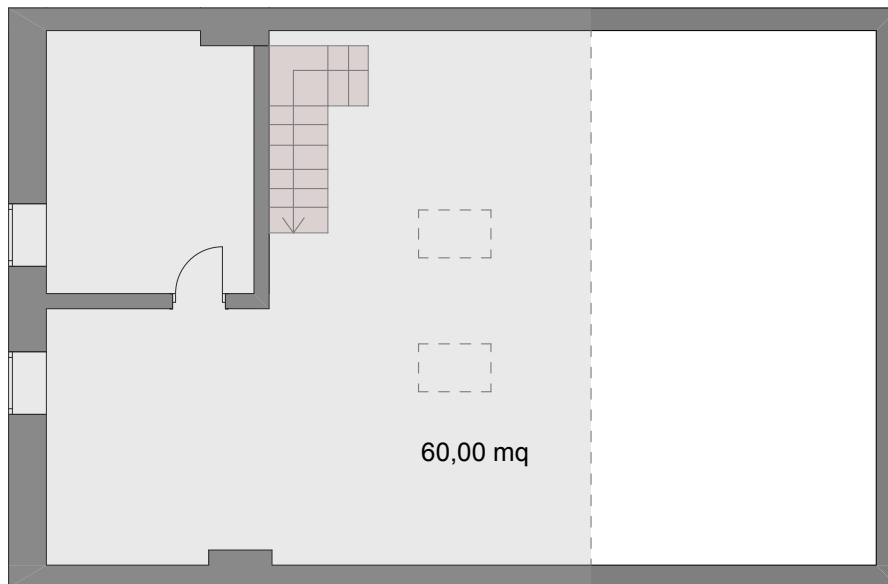


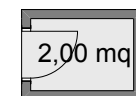
## CALCOLO MQ COMMERCIALI

PIANO SOPPALCO



mq commerciali appartamento (100%) = mq 90,00  
 mq commerciali soppalco (50% di 60,00) = mq 30,00  
 mq commerciali interrato (50% di 17,00) = mq 8,50  
 mq commerciali totali = mq 128,50

PIANO INTERRATO



PIANO TERZO

