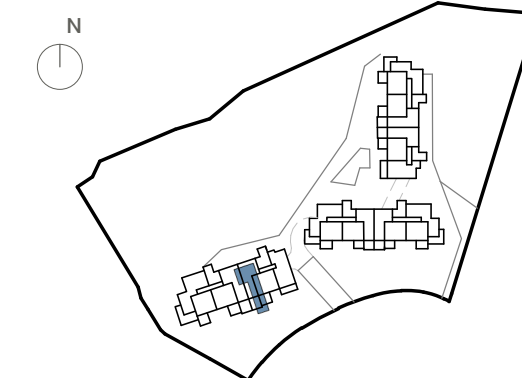


## LOCATION



## APPROXIMATE AREAS

Entrance	3,02 m <sup>2</sup>
Living Room-Kitchen	29,71 m <sup>2</sup>
Hall	4,68 m <sup>2</sup>
Master Bedroom	12,02 m <sup>2</sup>
Bedroom 2	10,66 m <sup>2</sup>
Master Bathroom	4,56 m <sup>2</sup>
Bathroom 2	3,71 m <sup>2</sup>
<b>Internal Useful Floor Area</b>	<b>68,35 m<sup>2</sup></b>
Covered Terrace	15,64
<b>External Useful Floor Area</b>	<b>m<sup>2</sup></b>
	15,64
	m <sup>2</sup>

<b>Internal built area</b>	<b>78,63 m<sup>2</sup></b>
<b>Internal gross area including PP.</b>	<b>91,69 m<sup>2</sup></b>
<b>Common Area*</b>	<b>91,69 m<sup>2</sup></b>

<b>Regarding Decreto BOJA 218/2005</b>	
<b>Total useful floor area</b>	<b>75,19 m<sup>2</sup></b>
<b>Total built area</b>	<b>100,48 m<sup>2</sup></b>

\*Terraces are not included

## Apartment 065 -BlockB3 -Portal P6 -FloorP01 -DoorD

The information contained may be modified during the course of the work execution due to technical or legal requirements, without implying any reduction in the overall level of qualities. The access steps to the dwelling and exits to courtyards may be altered according to the level of the streets and it is up to the D.F. to set the criteria.

0 1 2 3 4 5m