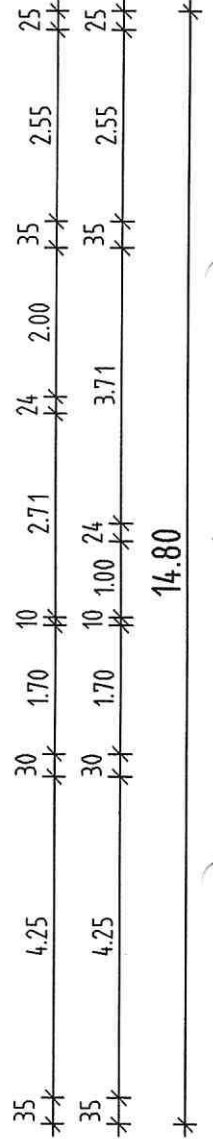
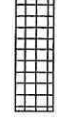
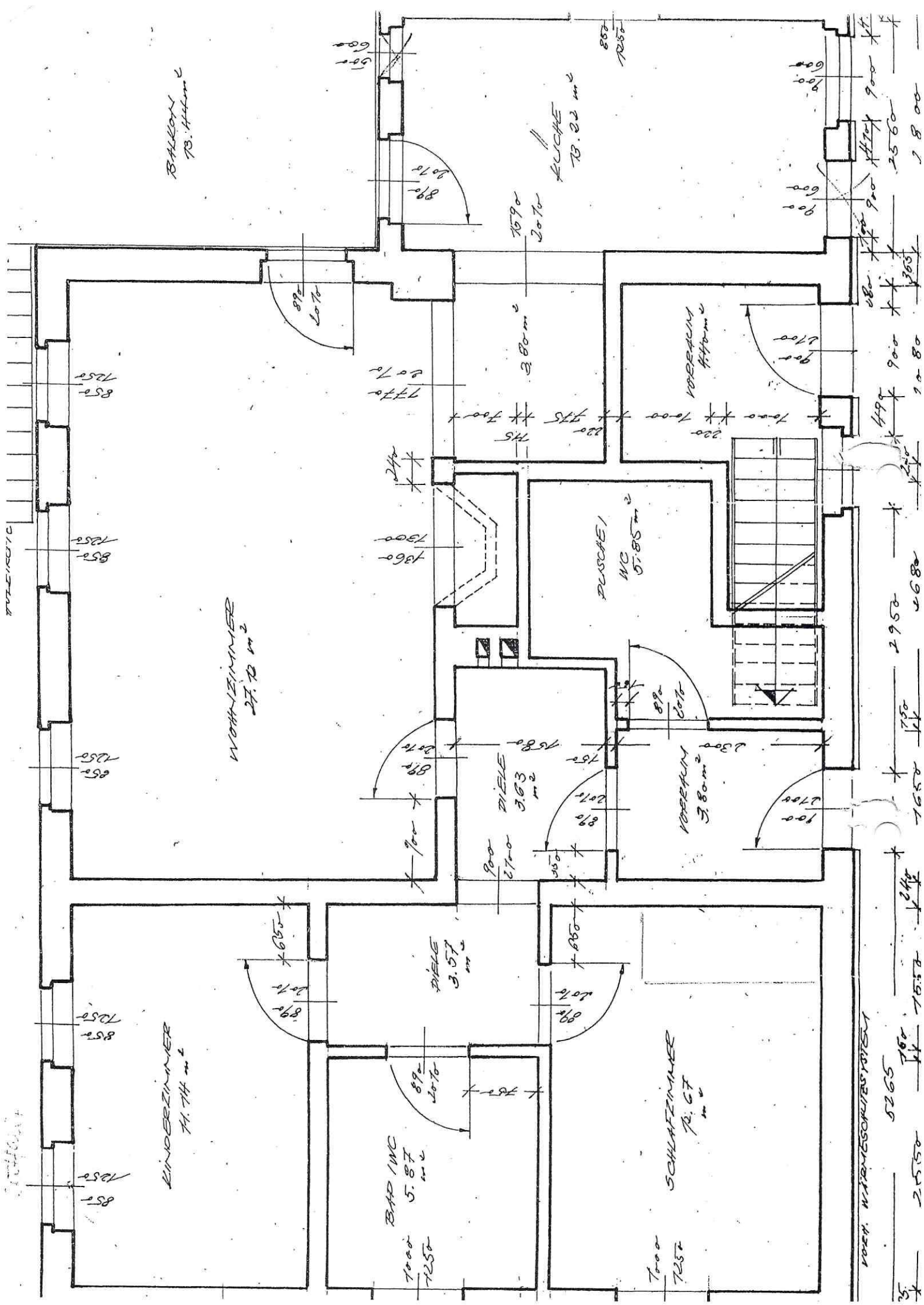


Gipskartonständerwände  
- am Treppenhaus mit  
Schall- und Wärmedämmung



# Erdeschoss



BALKON  
73.111m<sup>2</sup>

KUCHE  
73.22 m<sup>2</sup>

WOHNZIMMER  
27.70 m<sup>2</sup>

KINDERZIMMER  
11.74 m<sup>2</sup>

BAD/WC  
5.87 m<sup>2</sup>

SCHLAFZIMMER  
12.67 m<sup>2</sup>

DUSCHE/  
WC  
5.85 m<sup>2</sup>

DIELE  
3.63 m<sup>2</sup>

VORZIMM  
3.80 m<sup>2</sup>

VORZIMM  
3.80 m<sup>2</sup>

WÄRMESCHUTZSTREIFEN

Dimensions and area calculations:  
 2.5550 + 15.57 + 12.67 + 16.50 + 2.95 = 4680  
 5265  
 2.5550 + 15.57 + 12.67 + 16.50 + 2.95 = 4680  
 1.800