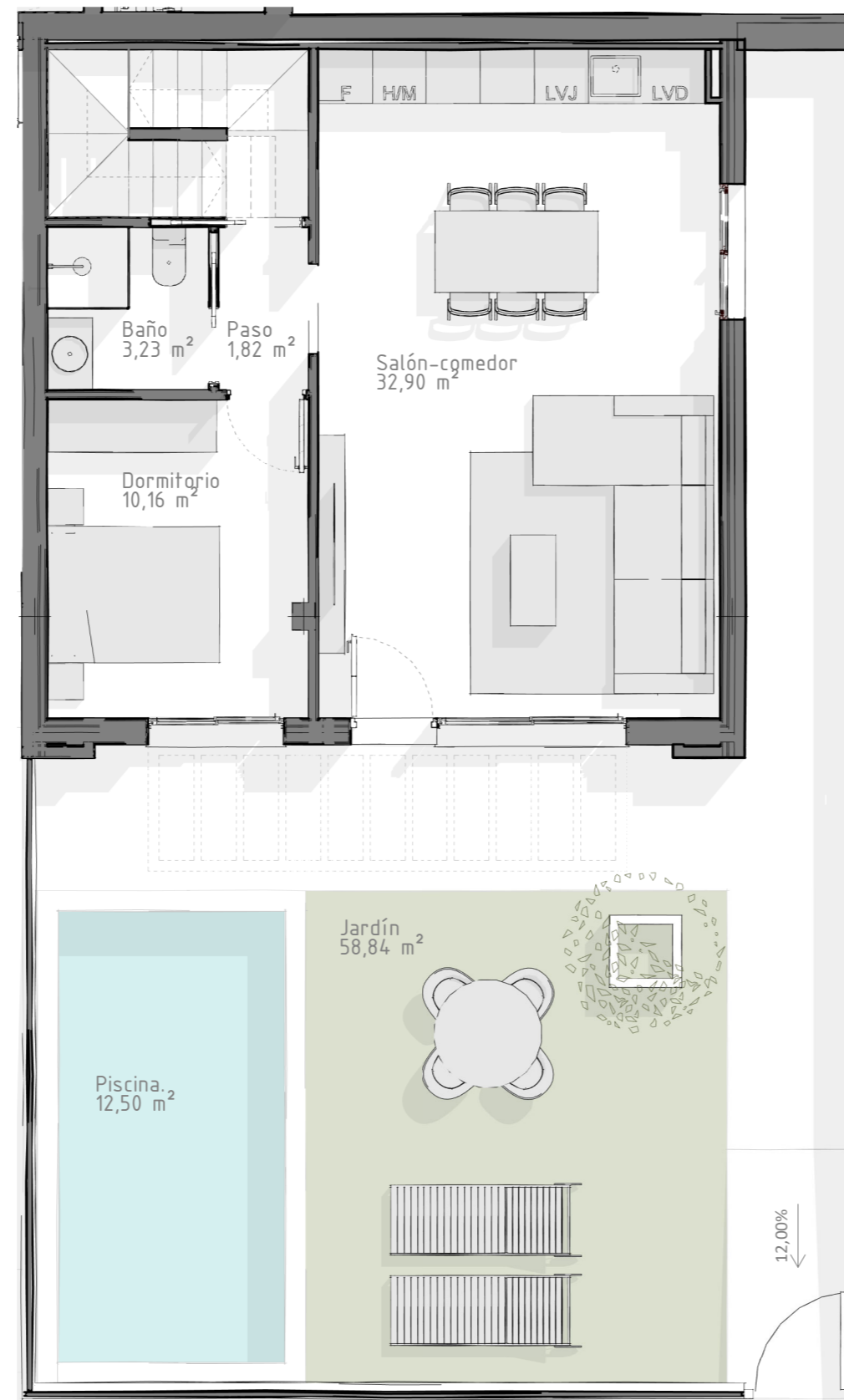
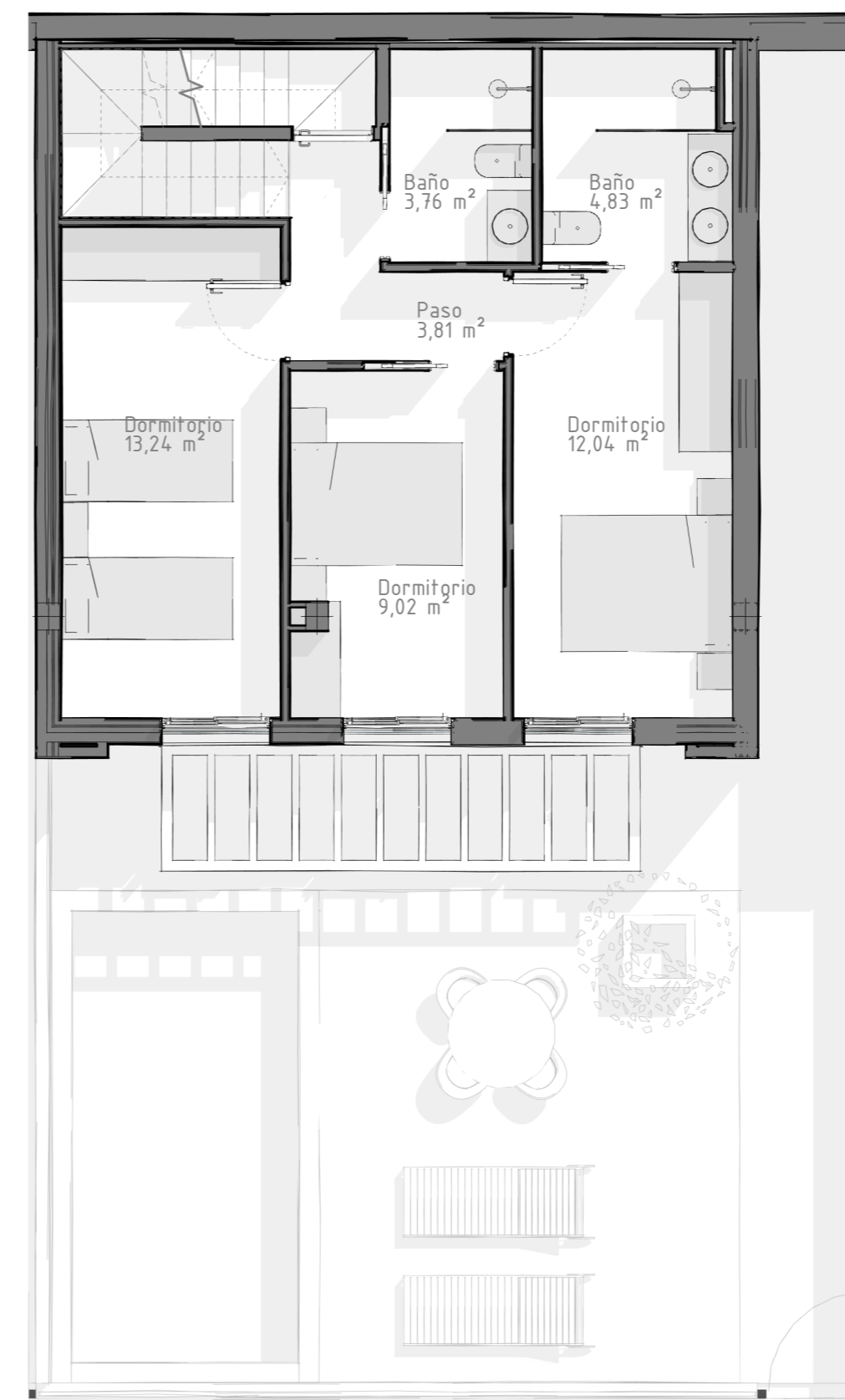


7.Viv. Unifamiliar. Sótano



7.Viv. Unifamiliar. Planta baja



7.Viv. Unifamiliar. Planta 1ª



7.Viv. Unifamiliar. Terraza



| |
|---|
| <p>VIVIENDA Nº7 HOUSE Nº7</p> |
| <p>CUADRO DE SUPERFICIES - SIZES Sup. Construida - Building m²: 117,53 m² Terraza - Terrace: 58,84 m² Solarium: 52,91 m²</p> |