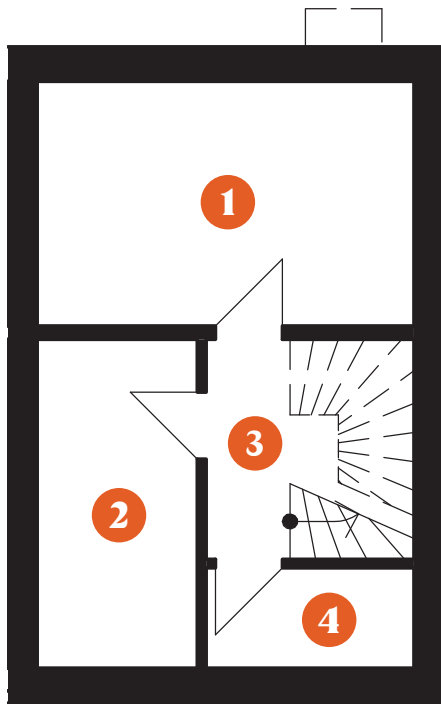


# Stadthaus 2

## UNTERGESCHOSS

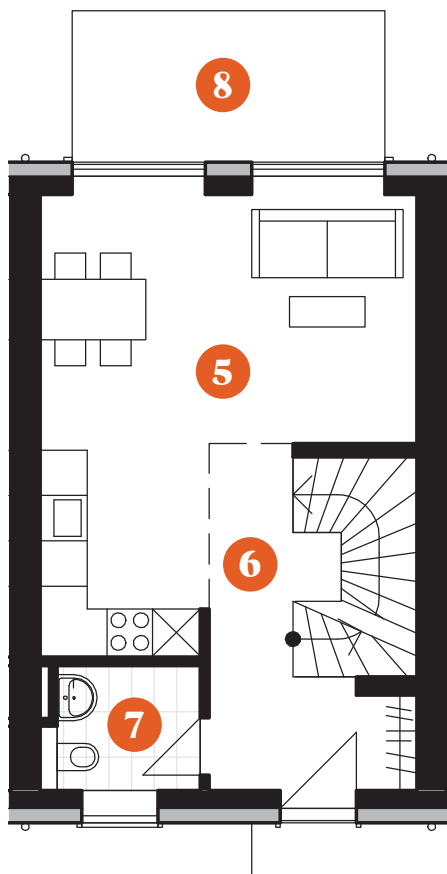


1	HOBBYRAUM	16,13 m <sup>2</sup>
2	ABSTELLRAUM	(9,22 m <sup>2</sup> )
3	FLUR	4,67 m <sup>2</sup>
4	HWR	(3,30 m <sup>2</sup> )



# Stadthaus 2

## ERDGESCHOSS

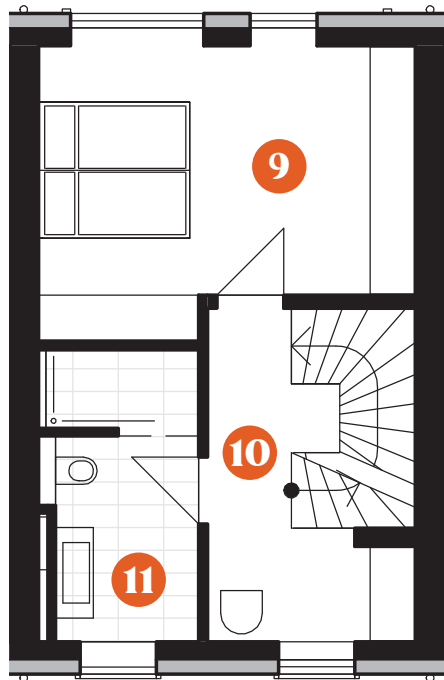


5	WOHNEN/ESSEN/KÜCHE	23,50 m <sup>2</sup>
6	FLUR	7,94 m <sup>2</sup>
7	GÄSTE-WC	3,32 m <sup>2</sup>
8	TERRASSE (50%)	3,50 m <sup>2</sup>



# Stadthaus 2

## OBERGESCHOSS

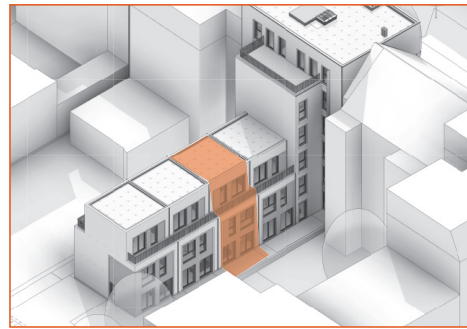
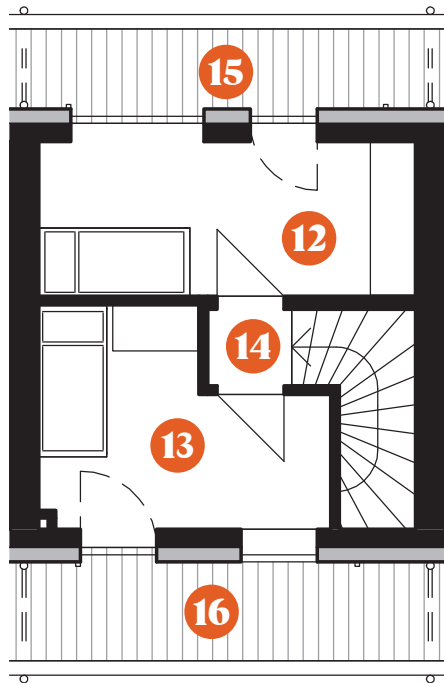


9	ZIMMER	18,36 m <sup>2</sup>
10	FLUR	7,98 m <sup>2</sup>
11	BAD	7,67 m <sup>2</sup>



# Stadthaus 2

## STAFFELGESCHOSS



12	ZIMMER	10,83 m <sup>2</sup>
13	ZIMMER	9,64 m <sup>2</sup>
14	FLUR	1,12 m <sup>2</sup>
15	BALKON (50%)	2,62 m <sup>2</sup>
16	BALKON (50%)	3,29 m <sup>2</sup>

**GESAMT\*** **ca. 120,57 m<sup>2</sup>**

\*Abstellraum und HWR sind nicht in der Wohn- Nutzfläche enthalten.

