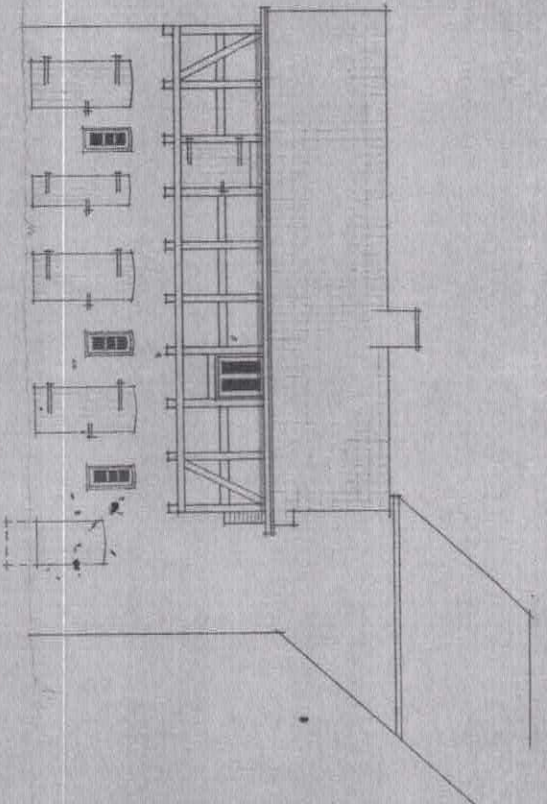
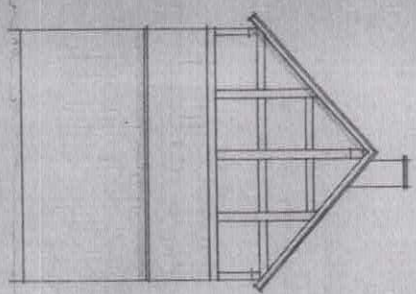


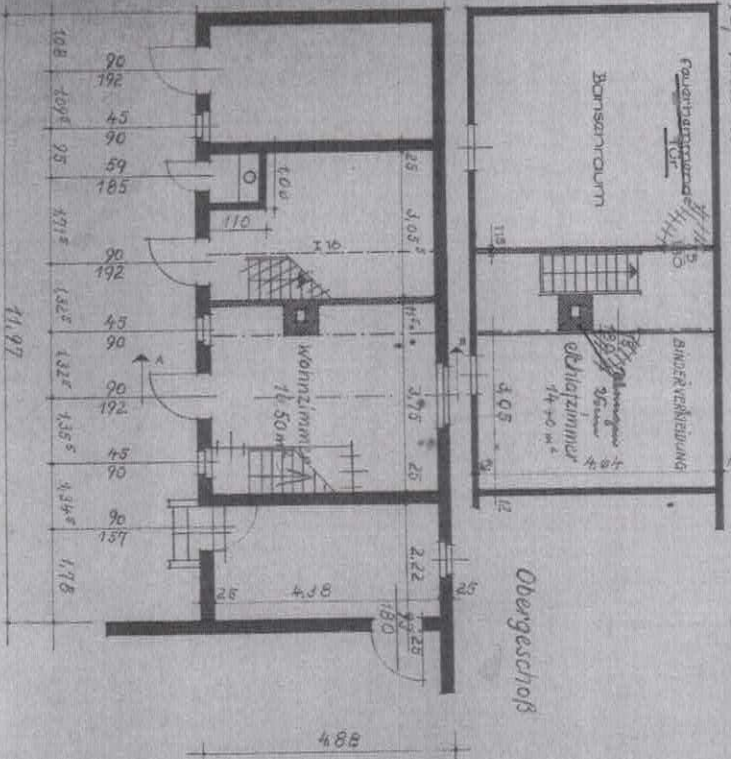
AUSBAU EINER ~~NOTW~~WOHNUNG FÜR HERRN HERMANN NIETHARD, VORSEFELDE BAHNHOFSTR. 7 M.:1:100



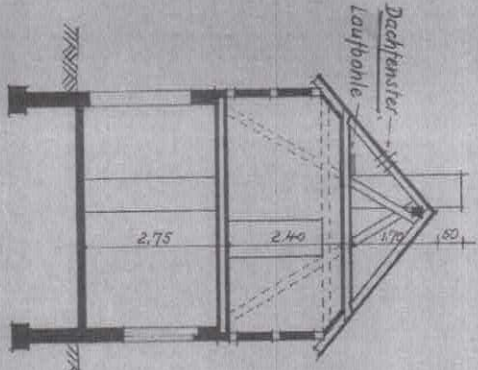
Hof-Ansicht



Giebel-Ansicht



Obergeschoss



Schnitt A-B

Gepfl.:  
- 4, 6, 54

Hilfsbau:  
Dachstuhlbauamt

11.97



