

An aerial photograph of a dense urban skyline at dusk. The sky is a mix of purple, blue, and orange. In the foreground, a prominent skyscraper with a dark facade and a vertical garden on its side stands out. The building has two large white 'S' logos near the top. Below the garden, there is a rooftop pool area with a blue deck and some greenery. The surrounding city is filled with other tall buildings, some with lights on. In the background, a body of water is visible, and the city extends to the horizon.

LIVE WHERE
THE SKY FEELS
LIKE HOME

It began as a road through the desert, a promise stretching into the unknown
Today it stands as the heartbeat of Dubai, alive with motion and meaning.

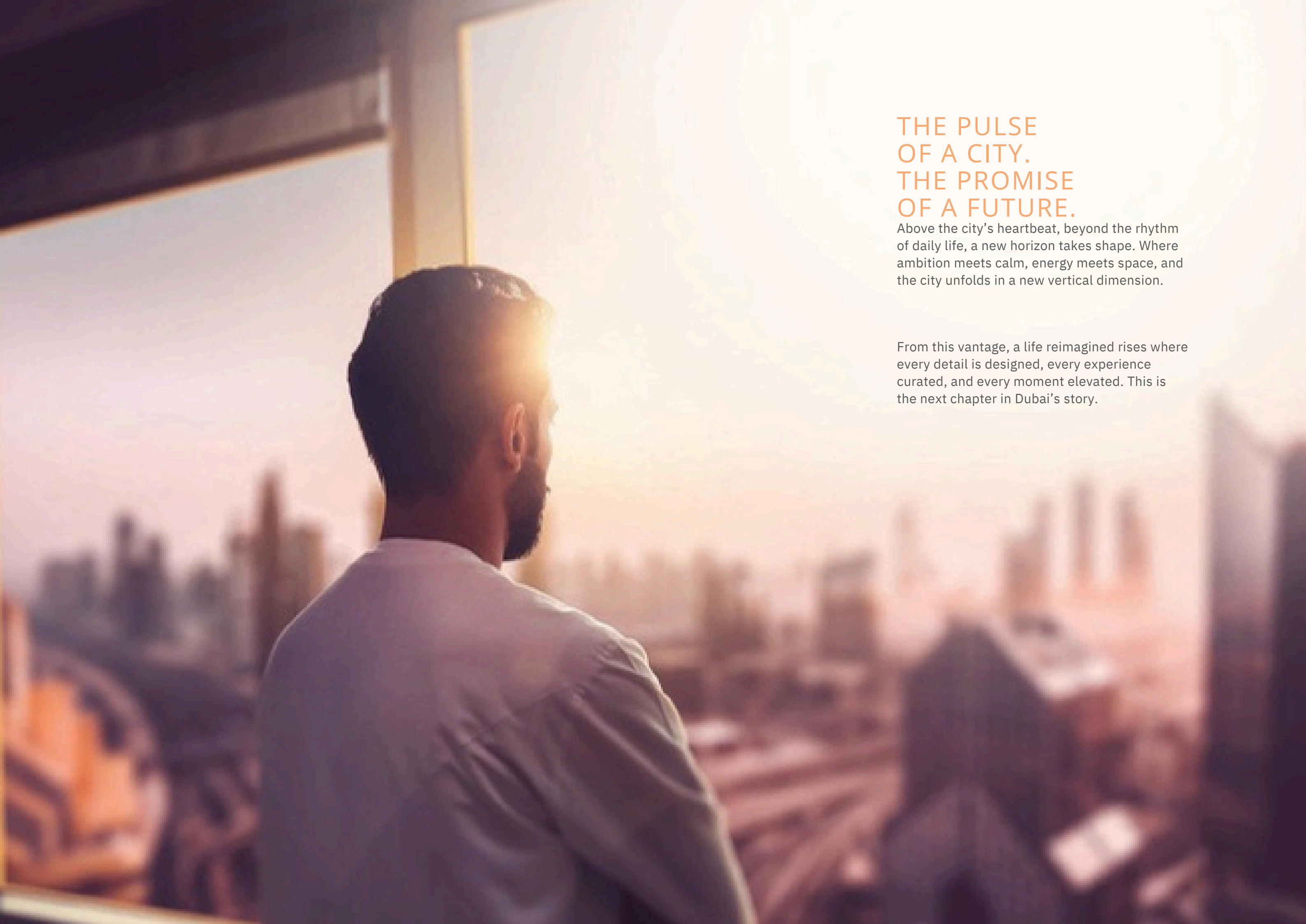


THE LANGUAGE OF PROGRESS

The skyline is more than architecture; it is the handwriting of progress.

Each tower tells a story of courage, and every light carries a promise to the world that greatness is not given, it is created.



A man with a beard, wearing a white shirt, is seen from the back and side, looking out a large window. The window offers a panoramic view of a city skyline at sunset. The sun is low on the horizon, creating a warm, golden glow that silhouettes the buildings and fills the sky with soft light. The man's hair and beard are dark, and the light from the window highlights the texture of his shirt.

THE PULSE OF A CITY. THE PROMISE OF A FUTURE.

Above the city's heartbeat, beyond the rhythm of daily life, a new horizon takes shape. Where ambition meets calm, energy meets space, and the city unfolds in a new vertical dimension.

From this vantage, a life reimagined rises where every detail is designed, every experience curated, and every moment elevated. This is the next chapter in Dubai's story.

INTRODUCING

Rising along Sheikh Zayed Road, the development is more than a landmark; it is a journey into the sky.

Each level carries light, air, and calm, flowing through homes that breathe and spaces that feel alive. From street to skyline, every moment reminds you that life can be lived with openness, serenity, and connection to the city and sky alike.





THE NAME AND ITS INSPIRATION

The development takes its spirit from four vertical gardens spanning six floors, each a haven of greenery and flowing trails. These elevated gardens create a sense of calm in the sky, offering a quiet retreat from the energy of the city below. It is a space where nature threads through daily life, allowing you to stroll among lush greenery, pause under shaded canopies, and feel grounded even at great heights amongst the clouds.

THE ESSENCE OF SPACE

Here, every home is a stage for life in its fullest form. Sunlight pours through expansive windows, filling each room with warmth and welcoming the rhythm of daily living. Living spaces stretch freely, inviting movement, thought, and calm into every corner.

From levels 15 - 69, residents gaze over Sheikh Zayed Road, watching the city pulse with energy while the Arabian Sea shimmers in the distance. At higher floors of 70 - 108, golden sunsets spill across the skyline, painting towers, streets, and waves in hues of light and possibility.





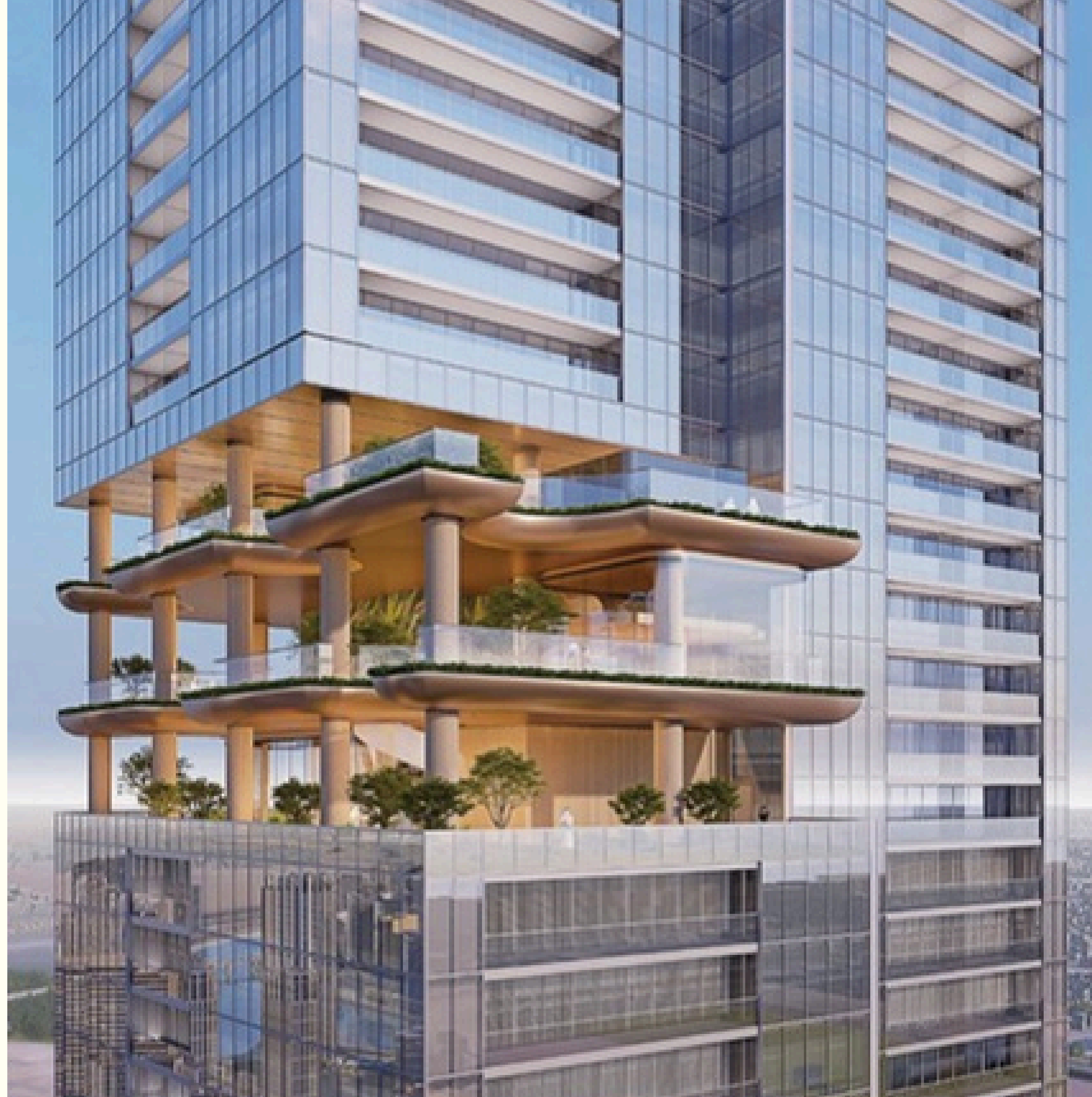
THE SKY AS YOUR LIVING ROOM

Imagine stepping onto the balcony after a long day at the 100th level or above. The air carries the faint scent of the sea, and the city below hums with quiet energy. You pause, taking in endless views that stretch from the skyline to the horizon, feeling the calm of open space surrounding you. Every moment is framed by light, openness, and a sense of freedom that only a home can offer.

LIVING ON THE EDGE OF LIGHT

The higher you go, the more expansive life becomes. Living here is not just about height, it is about perspective, about space that breathes, about days that open with sunlight and evenings that close with golden serenity.

The building is where the sky meets home, and every day becomes a horizon of endless possibility.



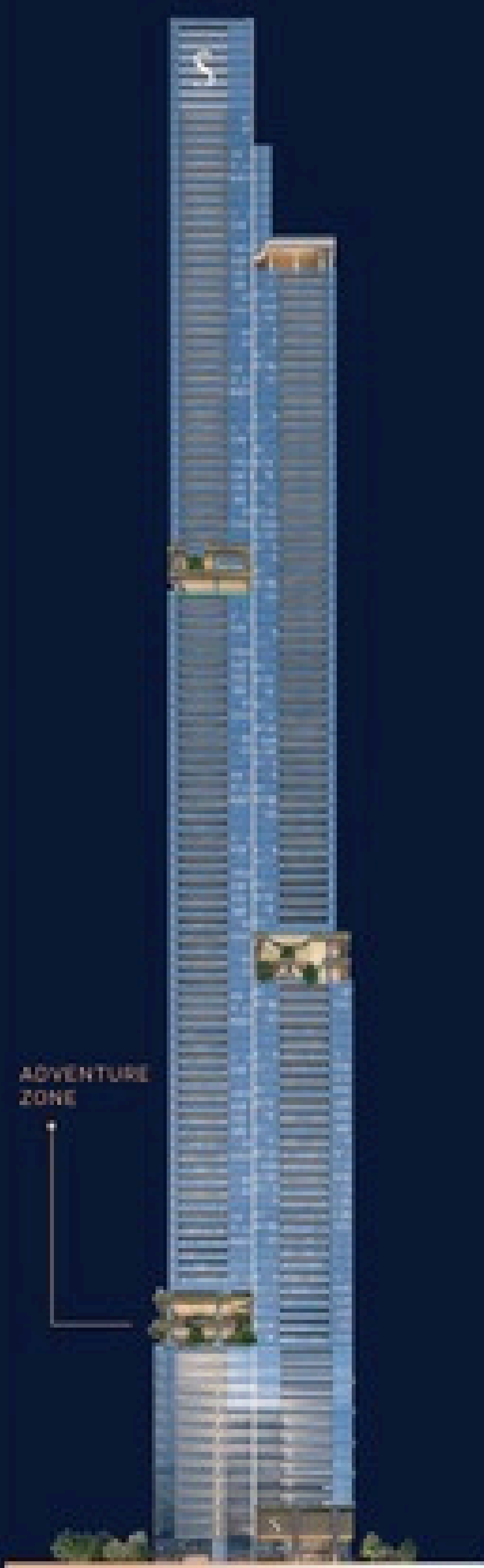
A LANDMARK
PERFECTLY
POISED BETWEEN
CITY AND SKY

Positioned along Sheikh Zayed Road, it rises where movement meets calm. To the north, the Arabian Gulf shimmers under sunlight. To the south, sunsets bathe the skyline in gold. To the east, the city's landmarks trace the horizon in light. Steps from the metro, life unfolds with effortless access, yet every moment feels elevated, quietly above the rhythm of the city below.





ZONE 1



ADVENTURE ZONE (FLOOR 13-18)



LEVEL 01

- FAMILY POOL + KIDS POOL + SLIDE
- ROCK CLIMBING WALL
- KIDS PLAY AREA
- DOG PARK
- BUSINESS LOUNGE + MEETING ROOM
- MULTI PURPOSE HALL
- CINEMA
- ARCADE & GAMES ZONE
- TODDLER PLAY AREA
- CHILDREN PLAY AREA



LEVEL 02

- SCULPTURE
- BESPOKE FURNITURE
- TODDLER PLAY AREA
- LAWN MOUND WITH TUNNEL
- ACTIVITY TOWER FOR KIDS
- SOUNDSCAPE PLAY



LEVEL 03

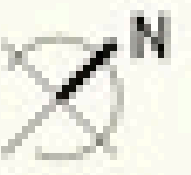
- TRAMPOLINE + PLAY MOUND
- BESPOKE FURNITURE ELEMENTS
- PADEL COURT





ZONE 2

ACTIVE LIFE (FLOOR 41-46)



LEVEL 01

- CALISTHENICS GYM
- JOGGING TRACK
- PARKOUR
- NET PLAY
- GYMNASIUM



LEVEL 02

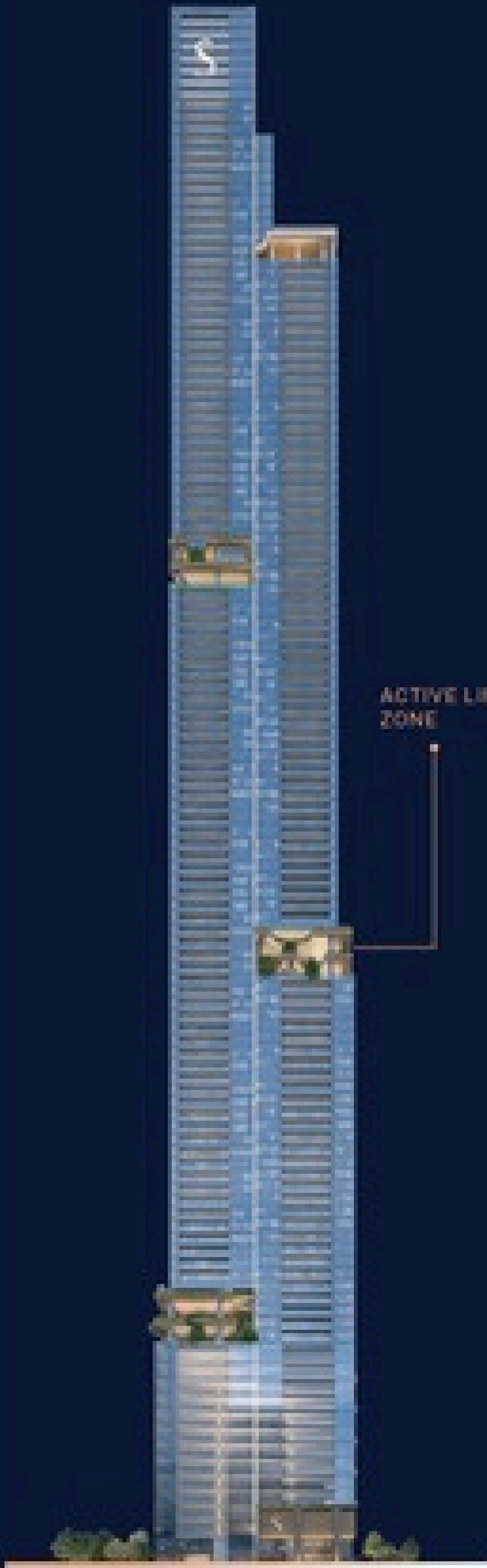
- LAWN
- SEATING ZONES
- YOGA DECK
- VIRTUAL FITNESS



LEVEL 03

- TRAMPOLINE + PLAY MOUND
- BESPOKE FURNITURE ELEMENTS
- ADULT FITNESS CIRCUIT
- BREAKOUT ZONE - FOOSEBALL
- SEATING / VIEWING DECK

ACTIVE LIFE
ZONE





LUSH LIFE ZONE
FIND CALM AMONG
THE CLOUDS

The Gardens unfolds across three tranquil levels, where greenery, light, and stillness meet. Amid lush canopies, glass pavilions house quiet spaces to read, reflect, or simply breathe.

Outdoor nooks, zen gardens, and a sensory path invite slow moments of pause, where nature softens the skyline, and serenity takes root.

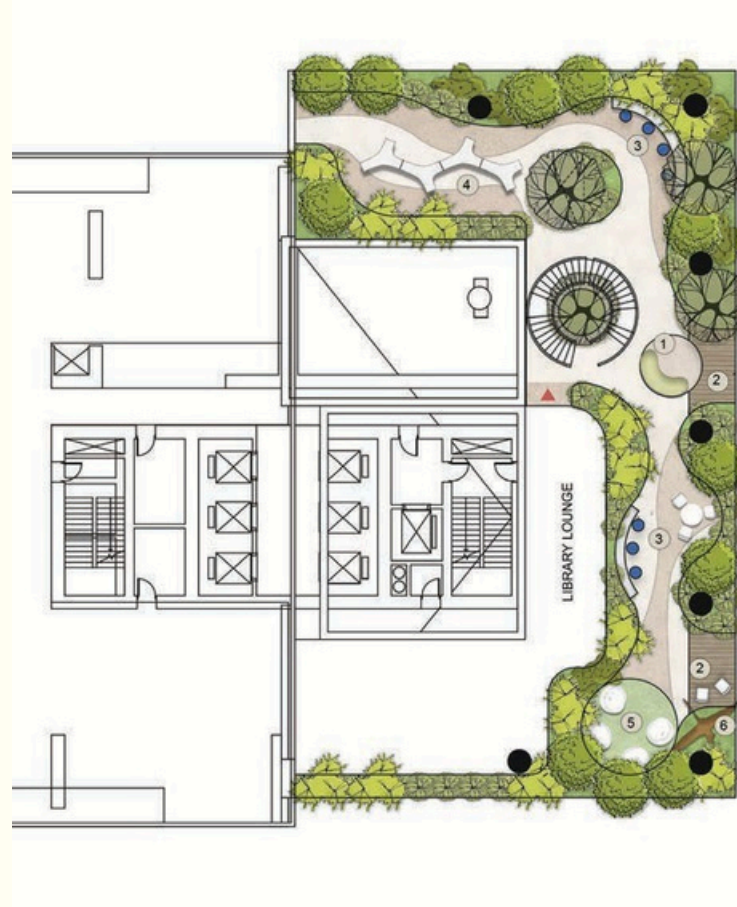


ZONE

3

LUSH LIFE ZONE

LUSH LIFE (FLOOR 71-76)



LEVEL 01

- WORKSPACE GARDEN
- LIBRARY AND LOUNGE
- LAWN



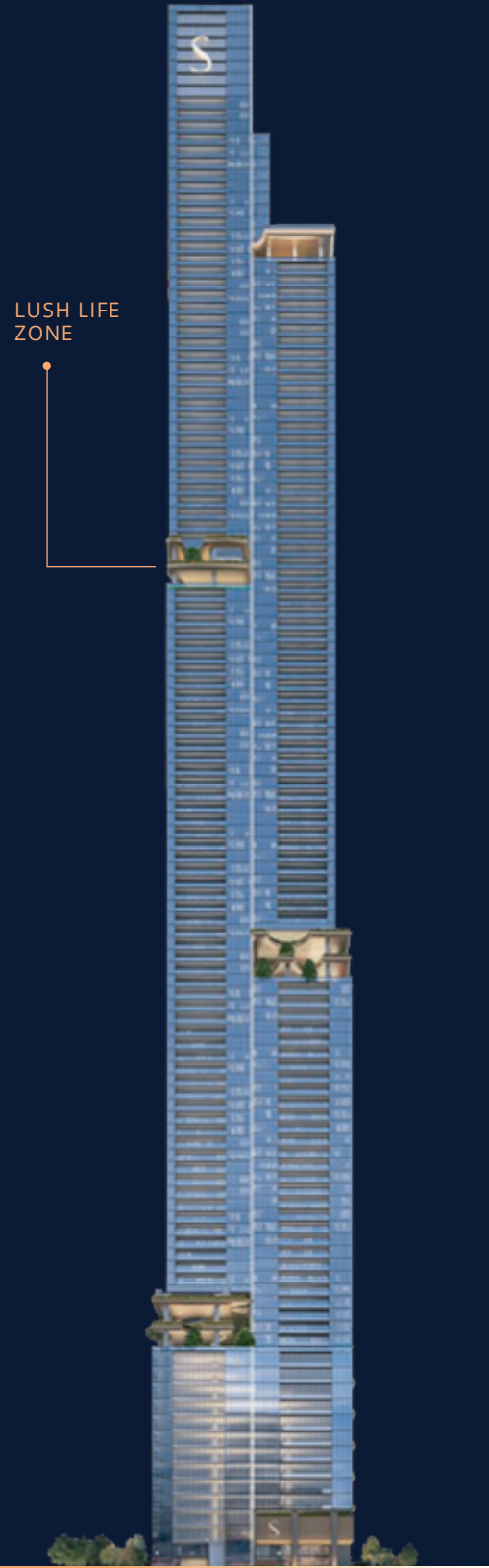
LEVEL 02

- ZEN GARDEN
- SEATING NOOKS
- WATER FEATURE
- LEISURE / MAJALIS LOUNGE



LEVEL 03

- WALKING LOOP
- URBAN FARMING
- SCULPTURE
- YOGA AND MEDITATION AREA



THE LUX LIFE

WHERE THE HORIZON
TURNS TO GOLD

High above the city, nearly 375mts in the air, the Lux Life feels like a resort hidden in the clouds. Infinity pools stretch toward the skyline, framed by lush tropical greens and the calm of refined luxury.

Floating decks and private terraces invite conversation and quiet dinners as golden sunsets paint the horizon. Every moment feels alive, suspended between exhilaration and serenity above the city.



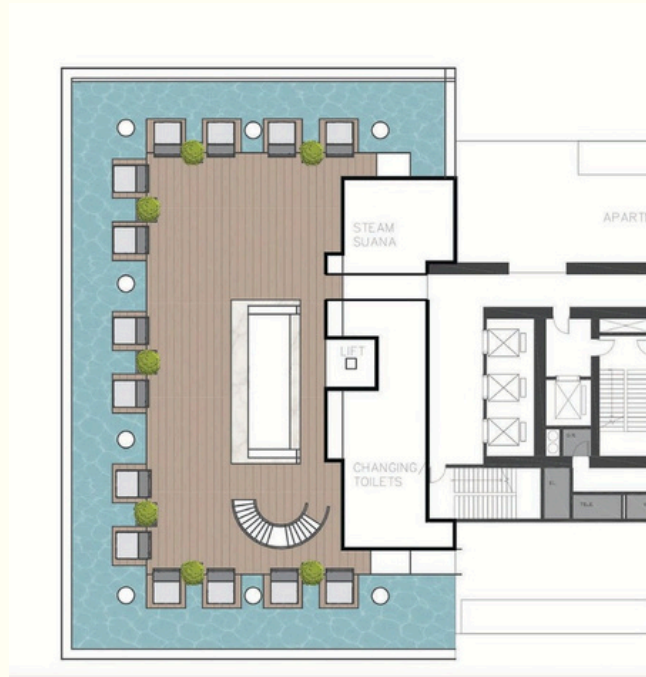


ZONE

4

LUXE LIFE
ZONE

LUXE LIFE (FLOOR 97-101)



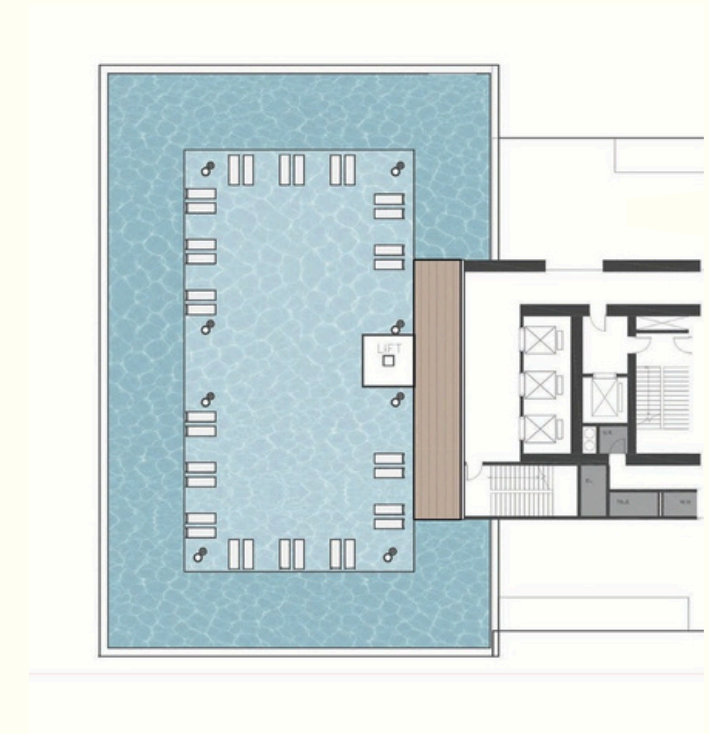
LEVEL 01

- TOILETS/ CHANGING FACILITIES
- STEAM / SAUNA
- OUTDOOR KITCHEN
- LOUNGERS
- SHALLOW REFLECTION POOL
- PLATFORM LIFT



LEVEL 02

- DECK
- PLATFORM LIFT



LEVEL 03

- REFLECTION POOL
- SWIMMING POOL
- PLATFORM LIFT
- JACUZZI

THE LOBBY

LAYERS OF WELCOME

The lobby is not a threshold; it's a pause between city and sky. Light is sculpted into soft gradients across stone and timber.

Delicate metallic veils filter sunlight, inspired by regional craftsmanship and timeless artistry.

This is the first breath of the building, where warmth meets wonder, and welcome is felt before spoken.





THE RESIDENCES

LIFE ABOVE THE CITY

Each home feels like a quiet retreat above the city. Floor-to-ceiling windows open to skyline views and the sea beyond. Private balconies and sky parks bring the outdoors closer, letting life flow between home and horizon.

With 684 residences, from one- to four-bedroom homes and exclusive duplexes, the development offers a calm, connected way of living, where space, light, and stillness come naturally.

THE SKY LIVING EXPERIENCE

A LIFE ABOVE, YET
DEEPLY GROUNDED

To live here is to experience both worlds, the pulse of Dubai below and the calm of the clouds above.

Sky living is not just about elevation but about emotion. It's the art of stillness amid motion, of being surrounded yet serene. Every sunrise feels personal. Every sunset feels infinite.

