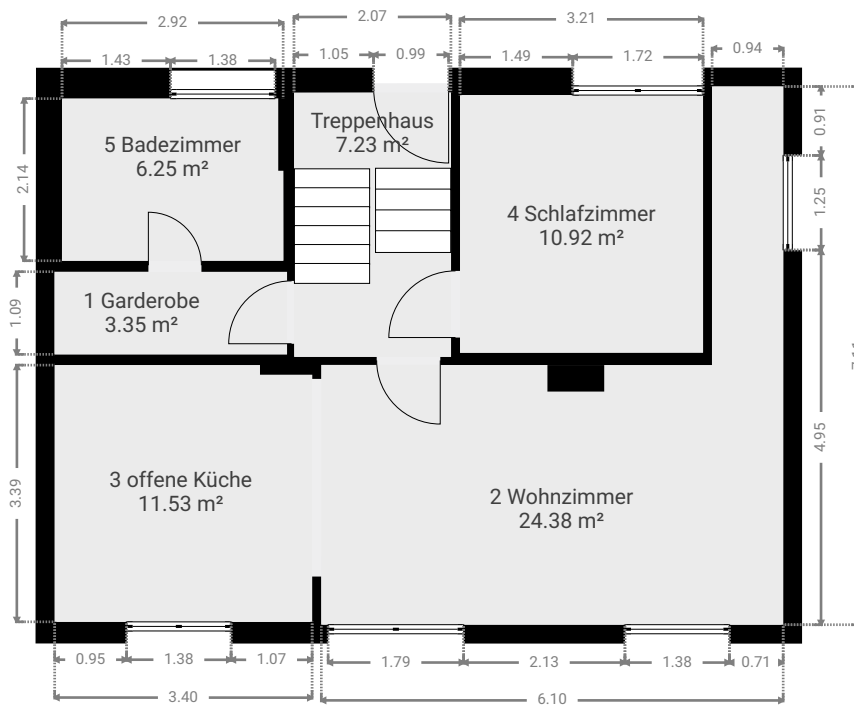


▼ Erdgeschoss

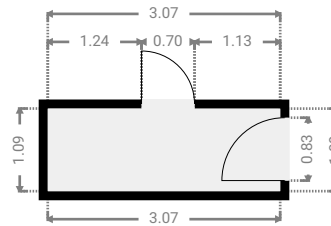
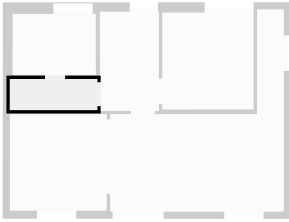


Grundrissdarstellung Einfamilienhaus

Cottbuser Straße 24, 01979 Lauchhammer, Brandenburg, DE
ETAGEN: 3

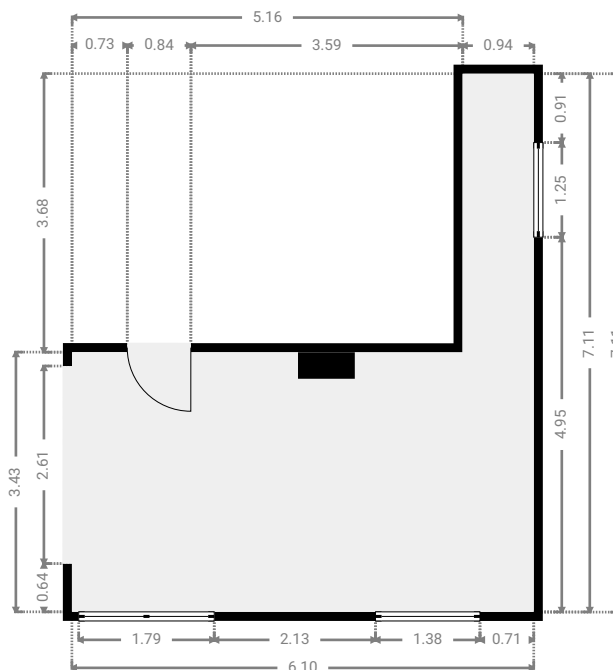
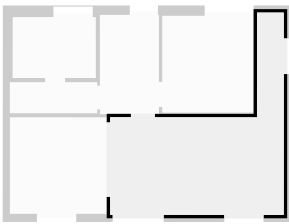
▼ 1 Garderobe Erdgeschoss

BREITE: 3.07 m • LÄNGE: 1.09 m
BEREICH: 3.35 m² • UMFANG: 8.32 m



▼ 2 Wohnzimmer Erdgeschoss

BREITE: 6.10 m • LÄNGE: 7.11 m
BEREICH: 24.38 m² • UMFANG: 26.42 m

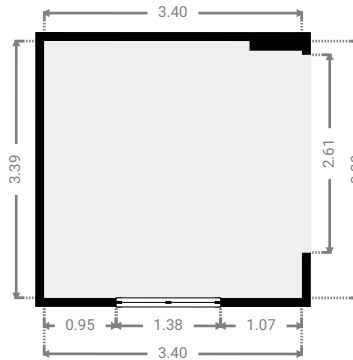
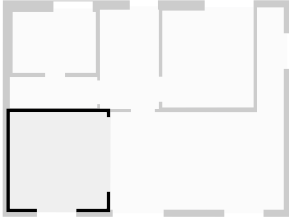


Grundrissdarstellung Einfamilienhaus

Cottbuser Straße 24, 01979 Lauchhammer, Brandenburg, DE
ETAGEN: 3

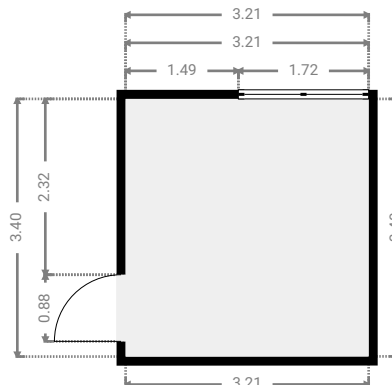
▼ 3 offene Küche Erdgeschoss

BREITE: 3.40 m • LÄNGE: 3.39 m
BEREICH: 11.53 m² • UMFANG: 13.58 m



▼ 4 Schlafzimmer Erdgeschoss

BREITE: 3.21 m • LÄNGE: 3.40 m
BEREICH: 10.92 m² • UMFANG: 13.22 m

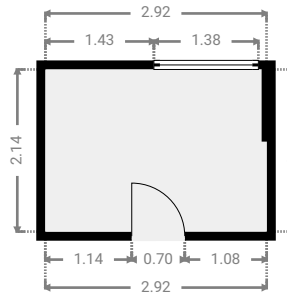
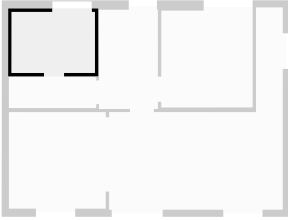


Grundrissdarstellung Einfamilienhaus

Cottbuser Straße 24, 01979 Lauchhammer, Brandenburg, DE
ETAGEN: 3

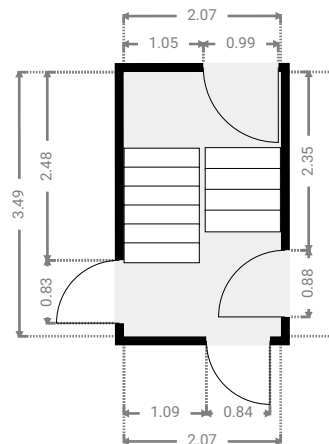
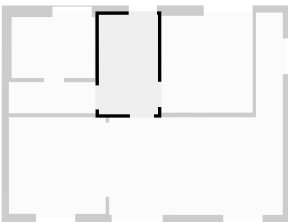
▼ 5 Badezimmer Erdgeschoss

BREITE: 2.92 m • LÄNGE: 2.14 m
BEREICH: 6.25 m² • UMFANG: 10.12 m

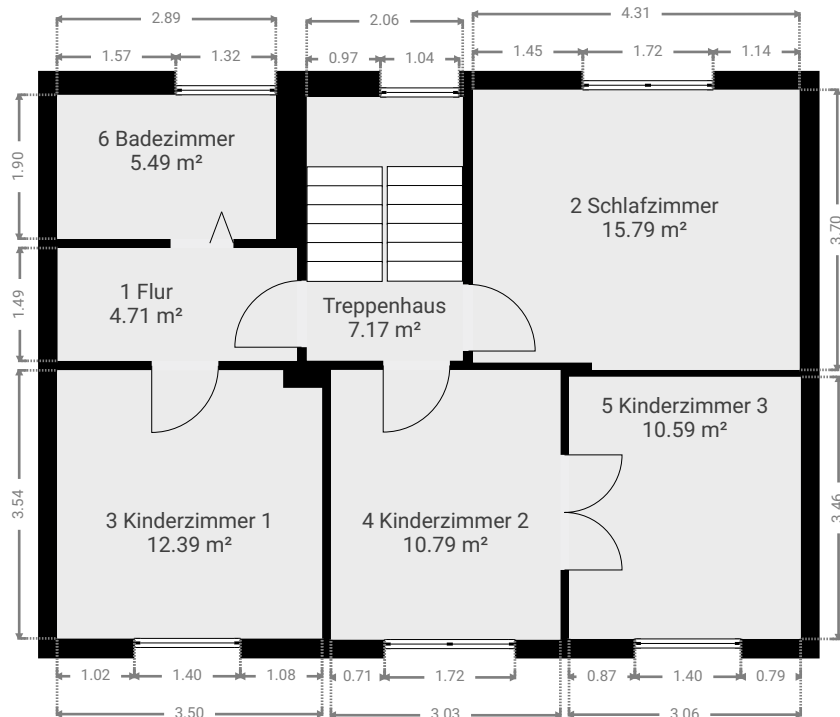


▼ Treppenhaus Erdgeschoss

BREITE: 2.07 m • LÄNGE: 3.49 m
BEREICH: 7.23 m² • UMFANG: 11.12 m



▼ 1. Stock

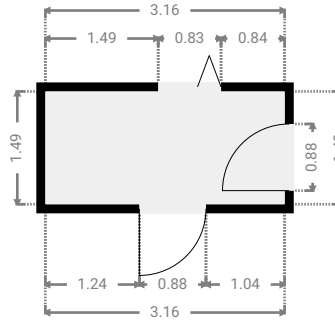
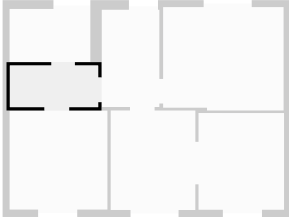


Grundrissdarstellung Einfamilienhaus

Cottbuser Straße 24, 01979 Lauchhammer, Brandenburg, DE
ETAGEN: 3

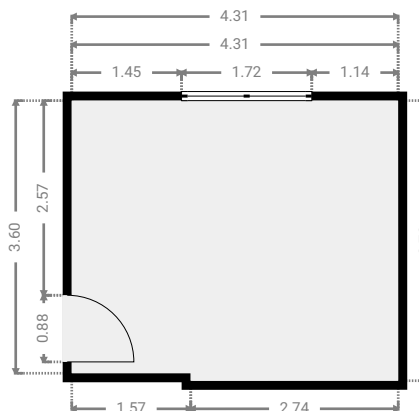
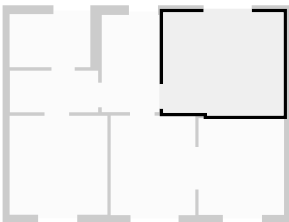
▼ 1 Flur 1. Stock

BREITE: 3.16 m • LÄNGE: 1.49 m
BEREICH: 4.71 m² • UMFANG: 9.30 m



▼ 2 Schlafzimmer 1. Stock

BREITE: 4.31 m • LÄNGE: 3.70 m
BEREICH: 15.79 m² • UMFANG: 16.02 m



Grundrissdarstellung Einfamilienhaus

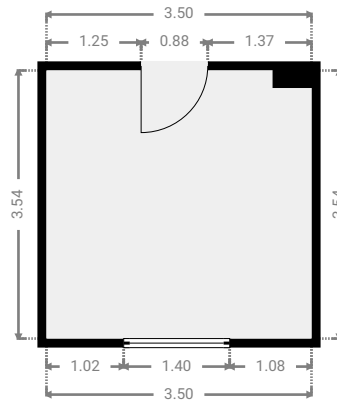
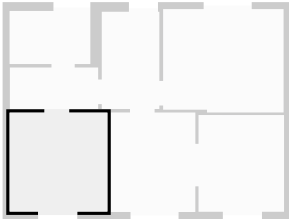
Cottbuser Straße 24, 01979 Lauchhammer, Brandenburg, DE
ETAGEN: 3



ÜBERSENDET VON Aufmaß 02.10.2025

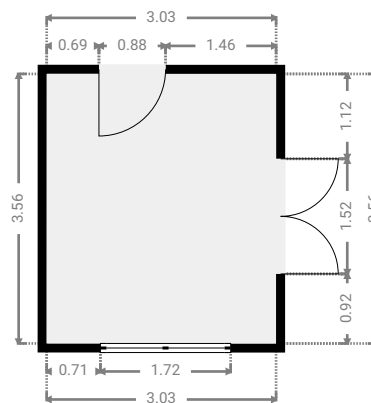
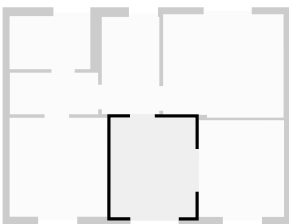
▼ 3 Kinderzimmer 1 1. Stock

BREITE: 3.50 m • LÄNGE: 3.54 m
BEREICH: 12.39 m² • UMFANG: 14.08 m



▼ 4 Kinderzimmer 2 1. Stock

BREITE: 3.03 m • LÄNGE: 3.56 m
BEREICH: 10.79 m² • UMFANG: 13.18 m

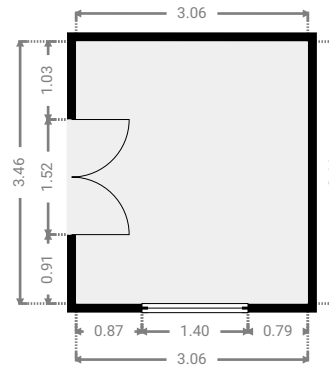
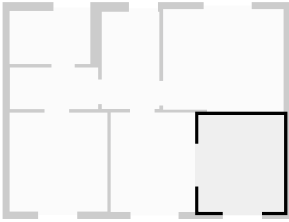


Grundrissdarstellung Einfamilienhaus

Cottbuser Straße 24, 01979 Lauchhammer, Brandenburg, DE
ETAGEN: 3

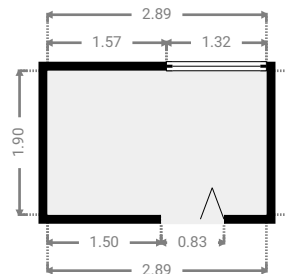
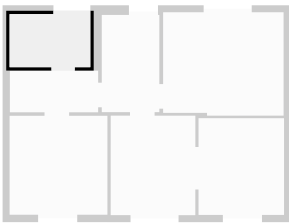
▼ 5 Kinderzimmer 3 1. Stock

BREITE: 3.06 m • LÄNGE: 3.46 m
BEREICH: 10.59 m² • UMFANG: 13.04 m



▼ 6 Badezimmer 1. Stock

BREITE: 2.89 m • LÄNGE: 1.90 m
BEREICH: 5.49 m² • UMFANG: 9.58 m

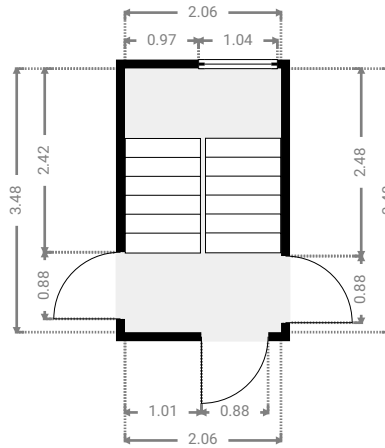
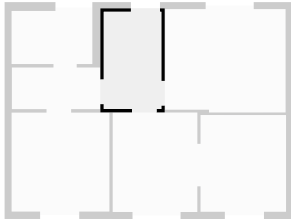


Grundrissdarstellung Einfamilienhaus

Cottbuser Straße 24, 01979 Lauchhammer, Brandenburg, DE
ETAGEN: 3

▼ Treppenhaus 1. Stock

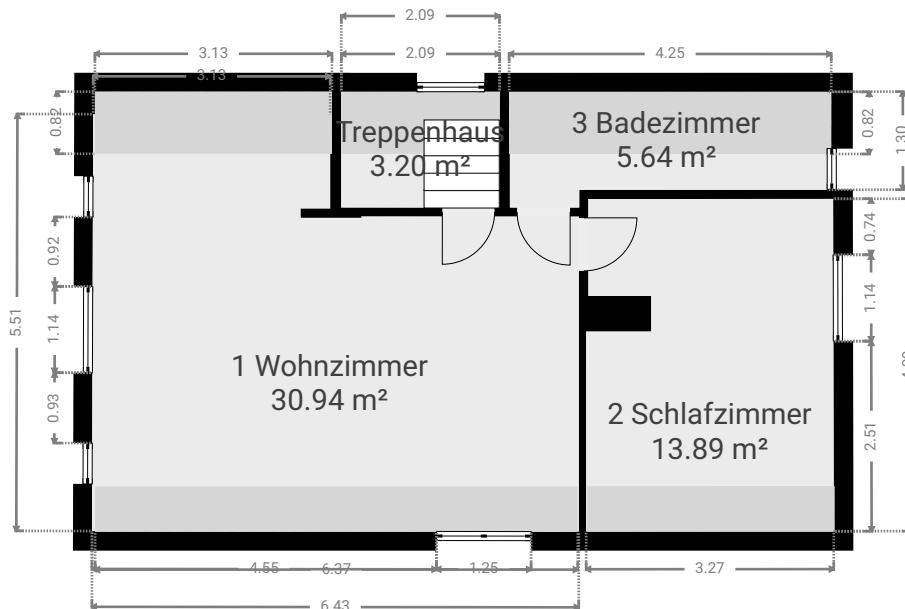
BREITE: 2.06 m · LÄNGE: 3.48 m
BEREICH: 7.17 m² · UMFANG: 11.08 m



Grundrissdarstellung Einfamilienhaus

Cottbuser Straße 24, 01979 Lauchhammer, Brandenburg, DE
ETAGEN: 3

▼ Dach

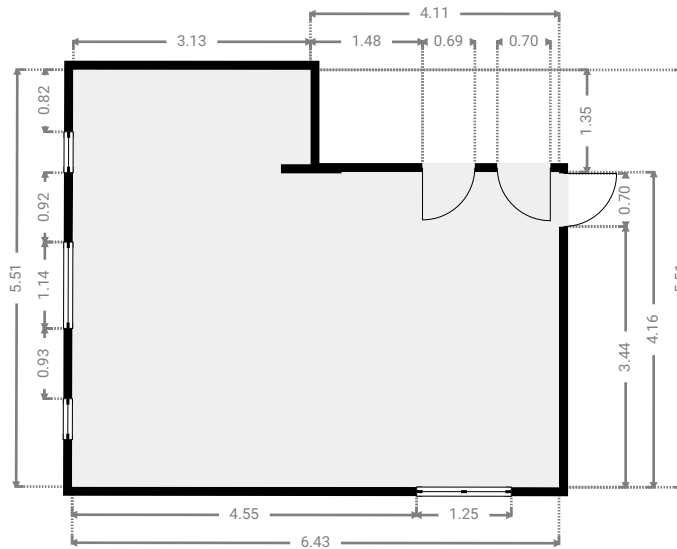
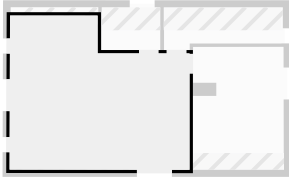


Grundrissdarstellung Einfamilienhaus

Cottbuser Straße 24, 01979 Lauchhammer, Brandenburg, DE
ETAGEN: 3

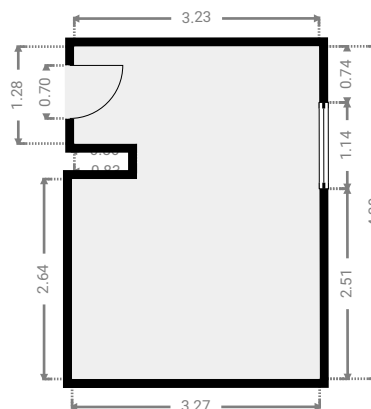
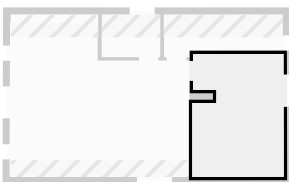
▼ 1 Wohnzimmer Dach

BREITE: 6.43 m • LÄNGE: 5.51 m
BEREICH: 30.94 m² • UMFANG: 23.86 m



▼ 2 Schlafzimmer Dach

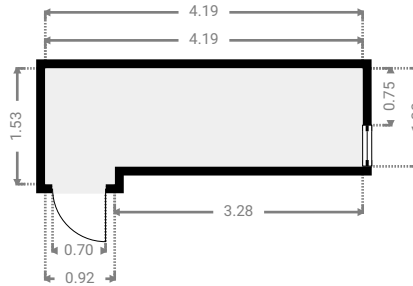
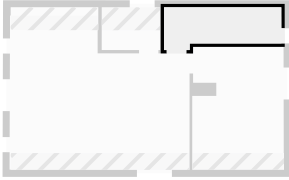
BREITE: 3.27 m • LÄNGE: 4.39 m
BEREICH: 13.89 m² • UMFANG: 16.97 m



▼ 3 Badezimmer

Dach

BREITE: 4.19 m • LÄNGE: 1.53 m
BEREICH: 5.64 m² • UMFANG: 11.44 m



▼ Treppenhaus

Dach

BREITE: 2.09 m • LÄNGE: 1.53 m
BEREICH: 3.20 m² • UMFANG: 7.24 m

