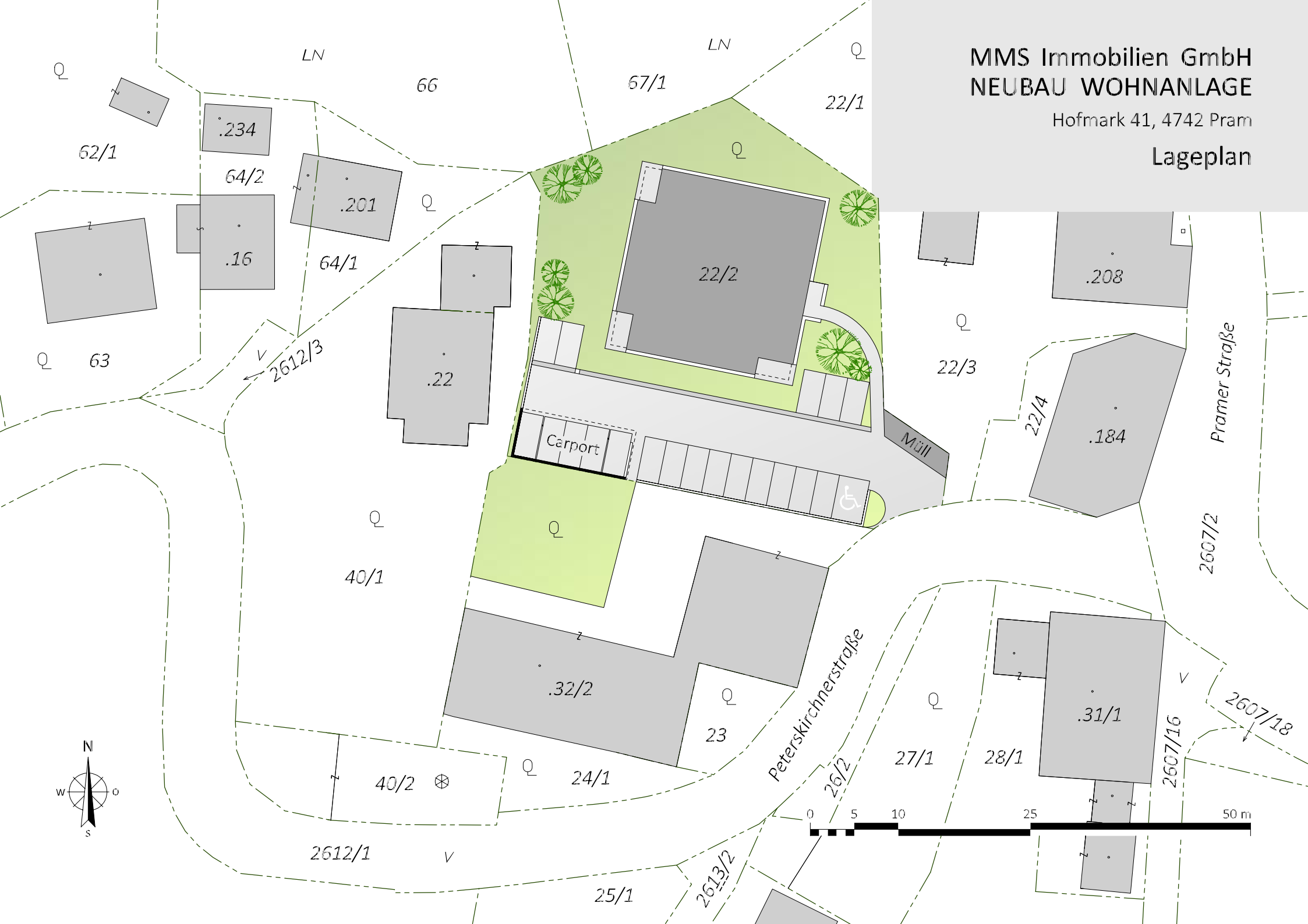


# MMS Immobilien GmbH NEUBAU WOHNANLAGE

Hofmark 41, 4742 Pram

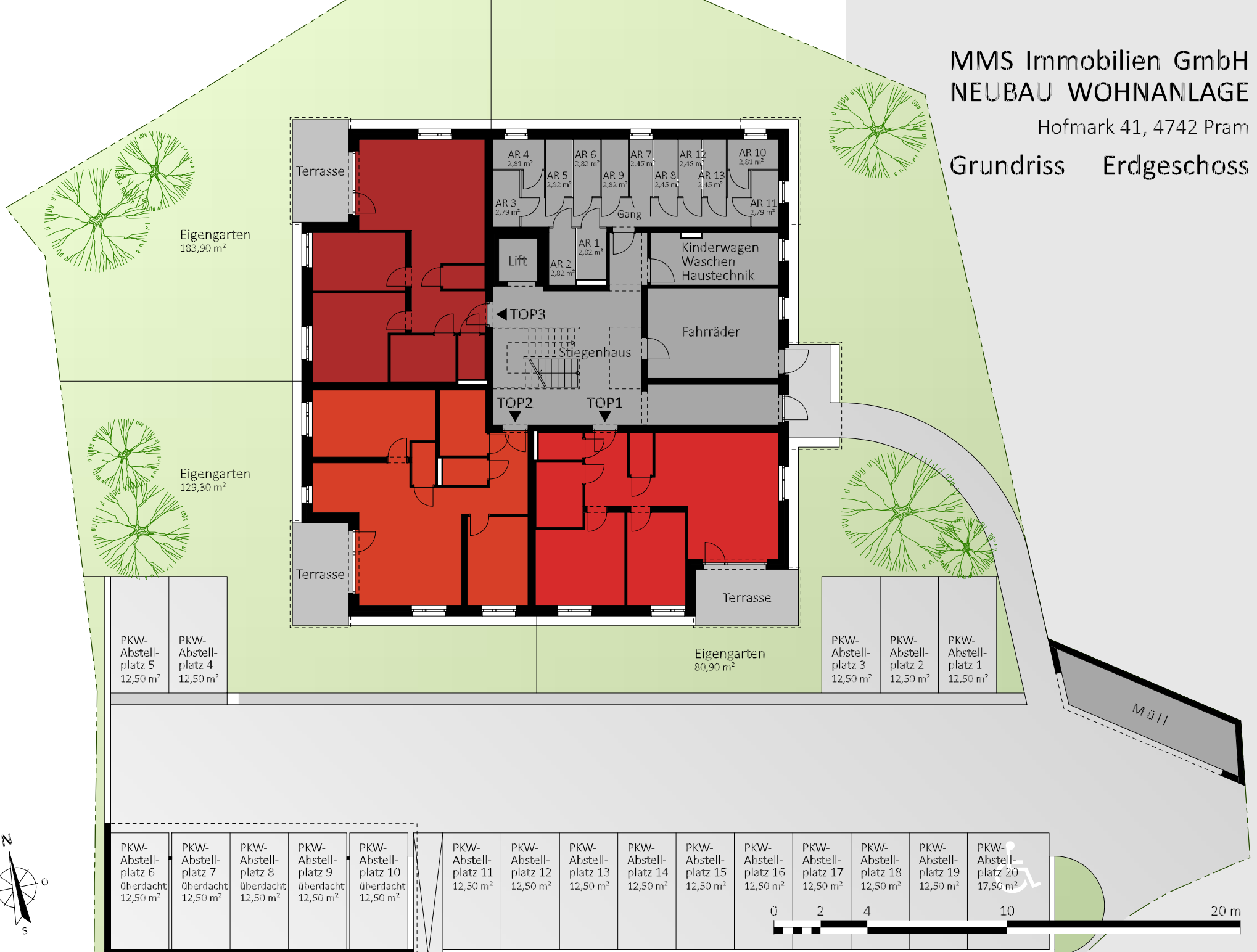
## Lageplan



# MMS Immobilien GmbH NEUBAU WOHNANLAGE

Hofmark 41, 4742 Pram

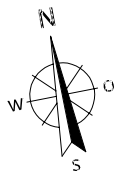
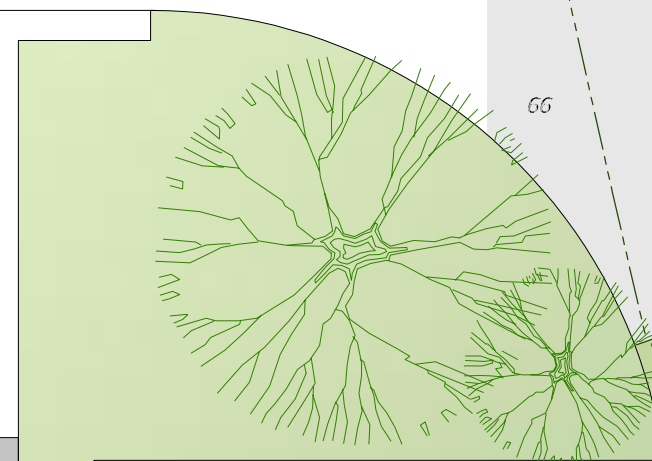
## Grundriss Erdgeschoss

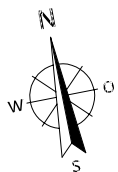
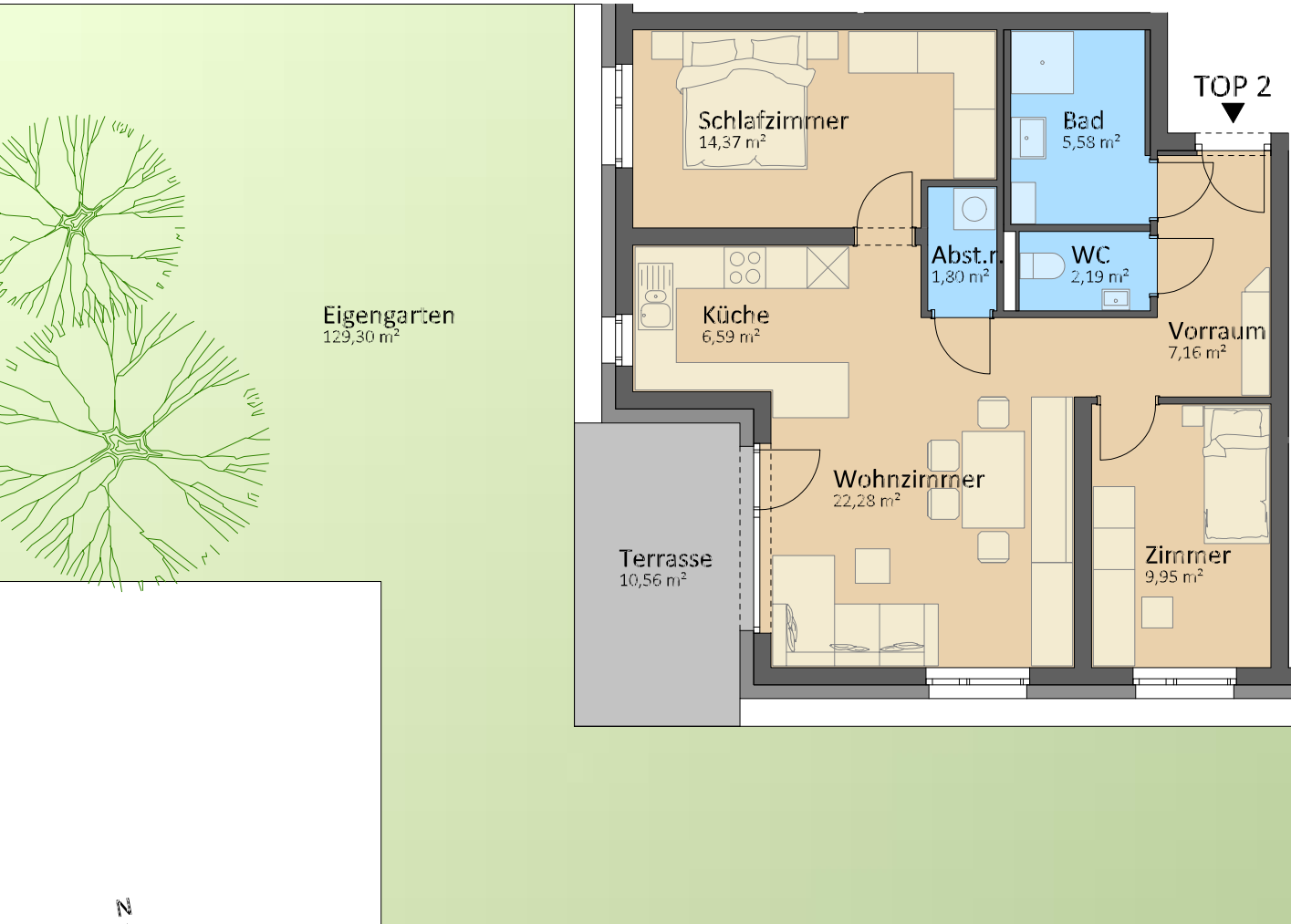


# MMS Immobilien GmbH NEUBAU WOHNANLAGE

Hofmark 41, 4742 Pram

Erdgeschoss	TOP 1
Wohnfläche	65,99 m <sup>2</sup>
Terrasse	10,56 m <sup>2</sup>
Gesamt	76,55 m <sup>2</sup>
Eigengarten	80,90 m <sup>2</sup>





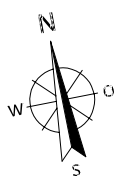
# MMS Immobilien GmbH NEUBAU WOHNANLAGE

Hofmark 41, 4742 Pram

**Erdgeschoss**      **TOP 2**

Wohnfläche	69,92 m <sup>2</sup>
Terrasse	10,56 m <sup>2</sup>
Gesamt	80,48 m <sup>2</sup>
Eigengarten	129,30 m <sup>2</sup>





# MMS Immobilien GmbH NEUBAU WOHNANLAGE

Hofmark 41, 4742 Pram

**Erdgeschoss**      **TOP 3**

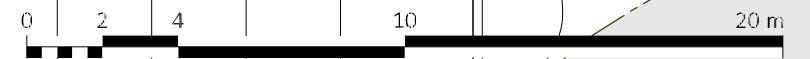
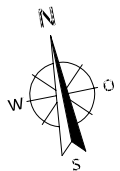
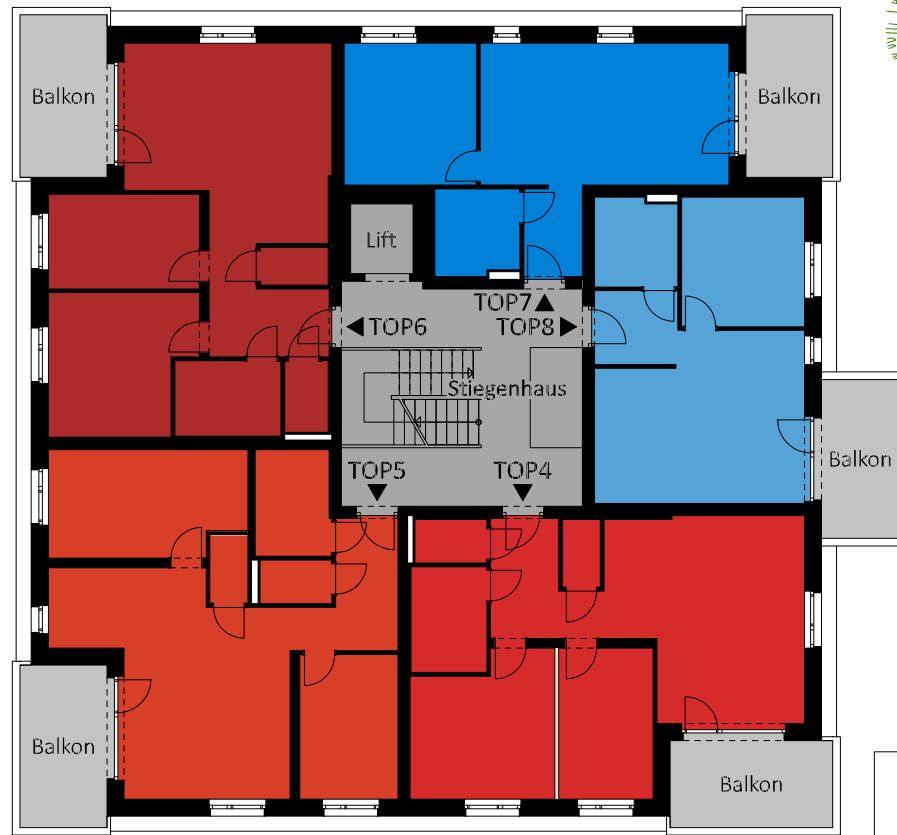
Wohnfläche	65,99 m <sup>2</sup>
Terrasse	10,56 m <sup>2</sup>
Gesamt	76,55 m <sup>2</sup>
Eigengarten	183,90 m <sup>2</sup>



MMS Immobilien GmbH  
NEUBAU WOHNANLAGE

Hofmark 41, 4742 Pram

Grundriss 1.Obergeschoss



# MMS Immobilien GmbH NEUBAU WOHNANLAGE

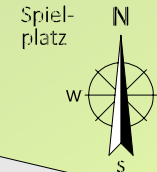
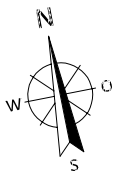
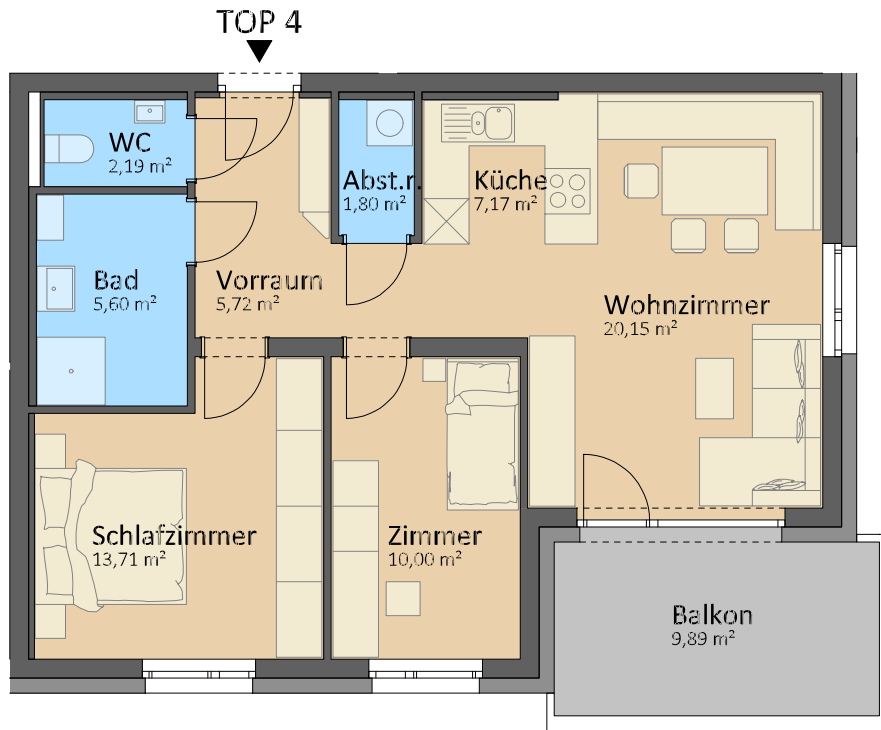
Hofmark 41, 4742 Pram

1.Obergeschoss **TOP 4**

Wohnfläche 66,34 m<sup>2</sup>

Balkon 9,89 m<sup>2</sup>

Gesamt 76,23 m<sup>2</sup>

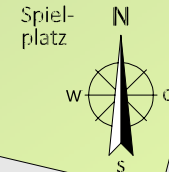
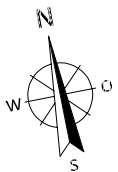
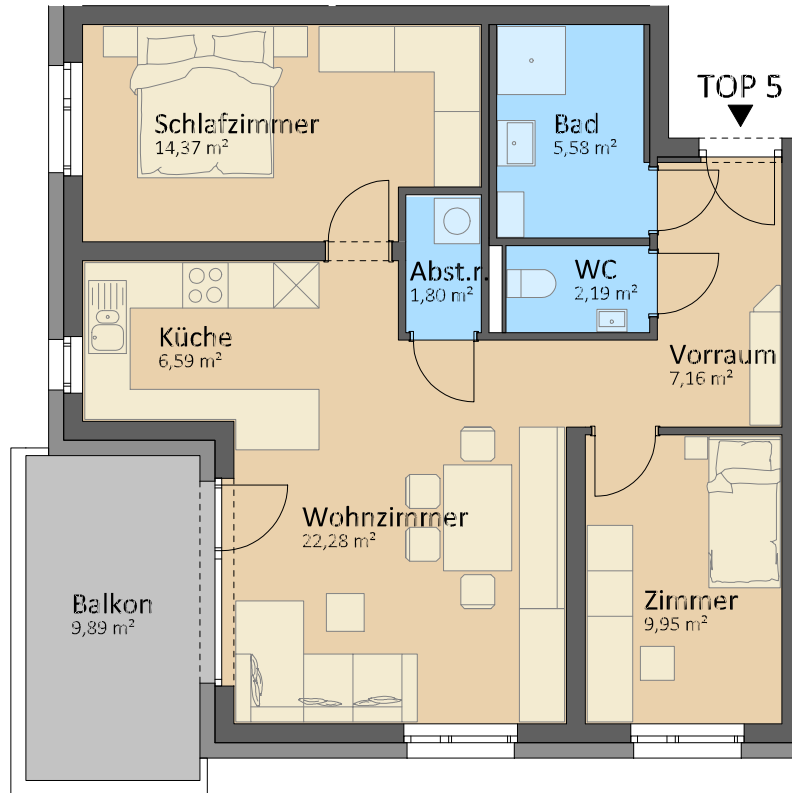


# MMS Immobilien GmbH NEUBAU WOHNANLAGE

Hofmark 41, 4742 Pram

1.Obergeschoss **TOP 5**

Wohnfläche	69,92 m <sup>2</sup>
Balkon	9,89 m <sup>2</sup>
Gesamt	79,81 m <sup>2</sup>



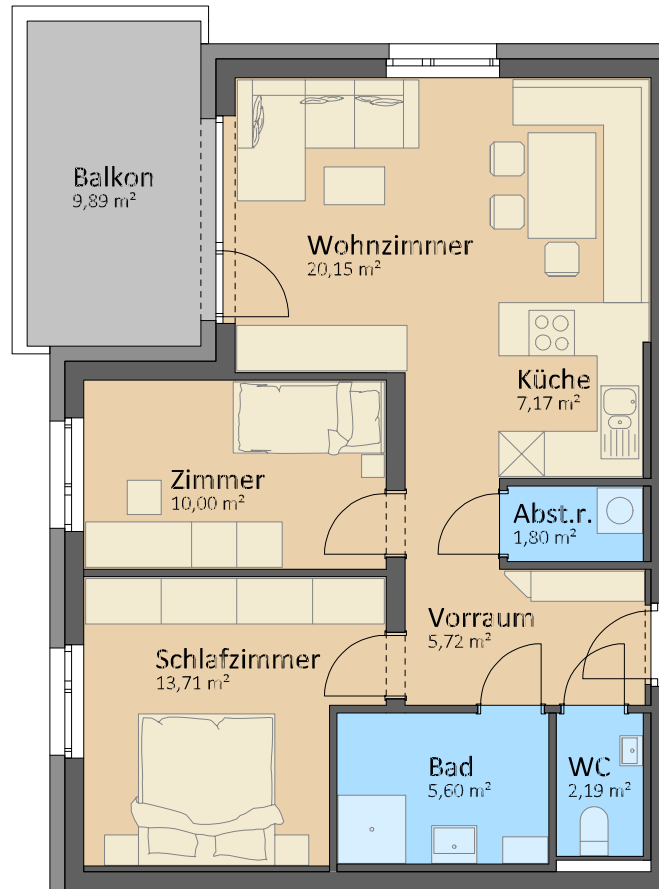


# MMS Immobilien GmbH NEUBAU WOHNANLAGE

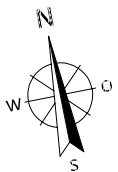
Hofmark 41, 4742 Pram

1.Obergeschoss **TOP 6**

Wohnfläche	66,34 m <sup>2</sup>
Balkon	9,89 m <sup>2</sup>
Gesamt	76,23 m <sup>2</sup>



← TOP 6



# MMS Immobilien GmbH NEUBAU WOHNANLAGE

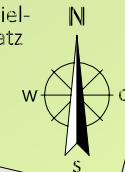
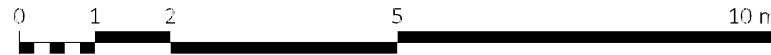
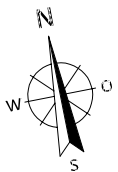
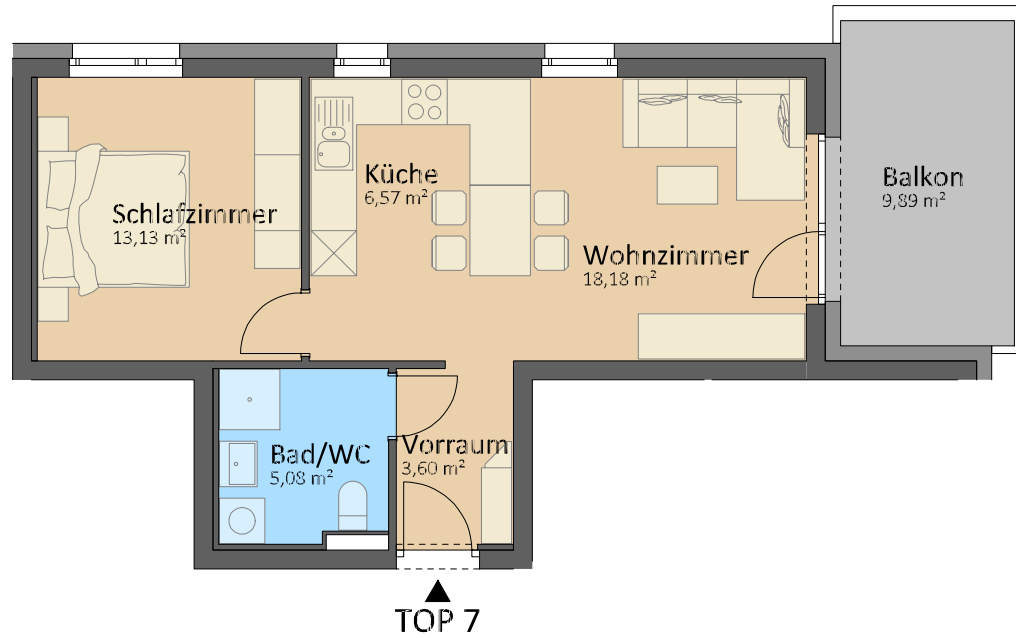
Hofmark 41, 4742 Pram

1.Obergeschoss **TOP 7**

Wohnfläche 46,56 m<sup>2</sup>

Balkon 9,89 m<sup>2</sup>

Gesamt 56,45 m<sup>2</sup>

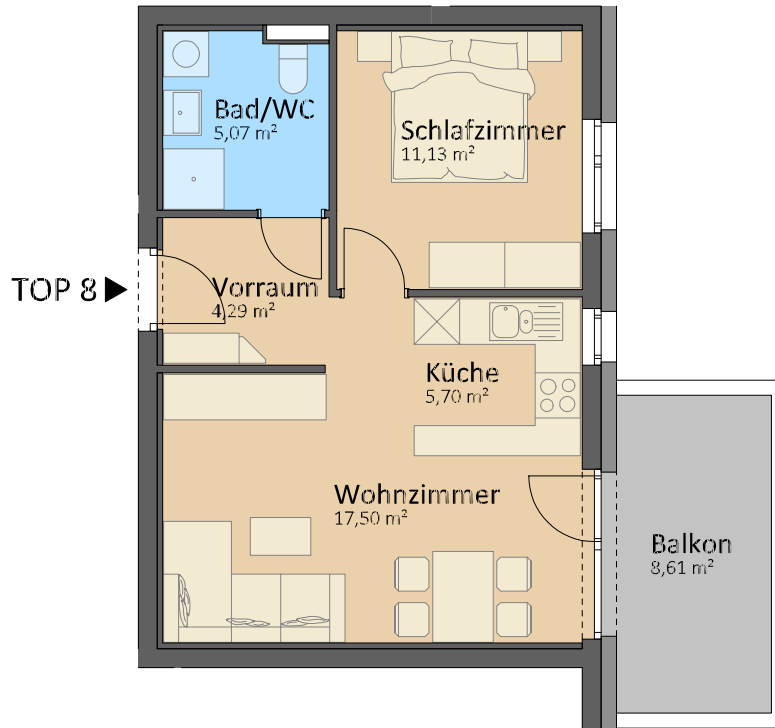


# MMS Immobilien GmbH NEUBAU WOHNANLAGE

Hofmark 41, 4742 Pram

1.Obergeschoss **TOP 8**

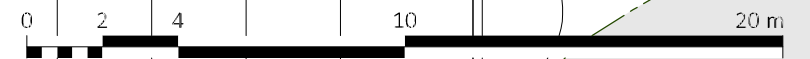
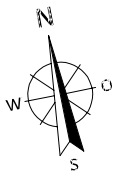
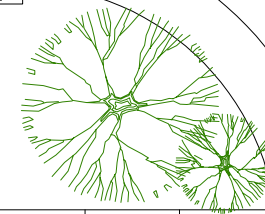
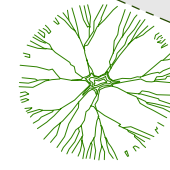
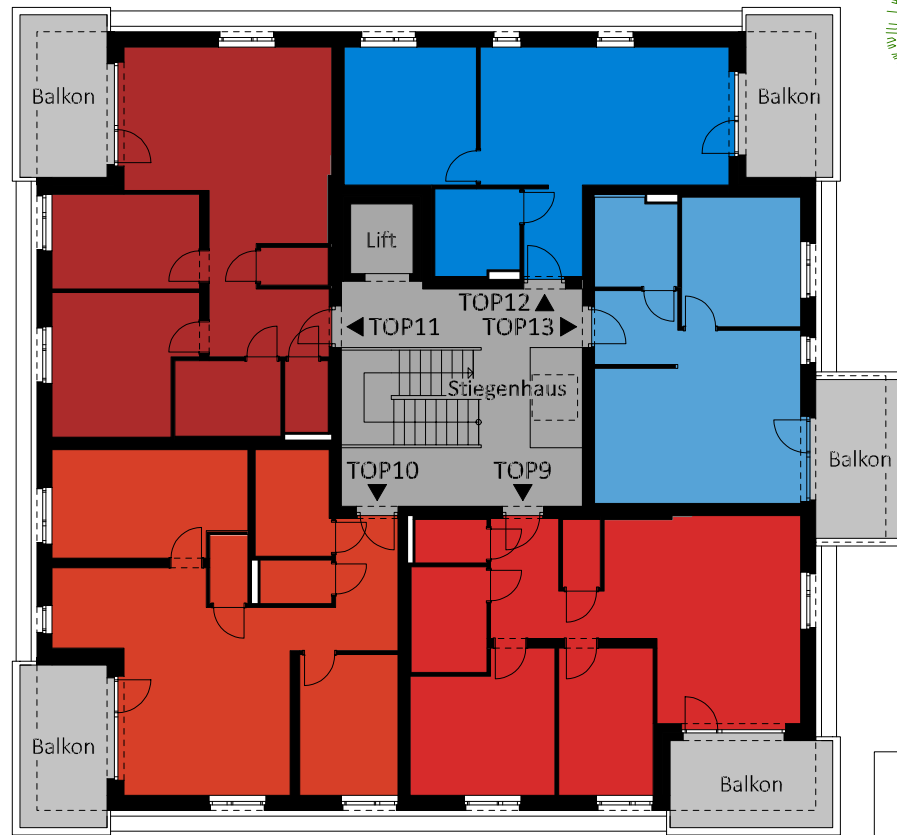
Wohnfläche	43,69 m <sup>2</sup>
Balkon	8,61 m <sup>2</sup>
Gesamt	52,30 m <sup>2</sup>



MMS Immobilien GmbH  
NEUBAU WOHNANLAGE

Hofmark 41, 4742 Pram

Grundriss 2.Obergeschoss

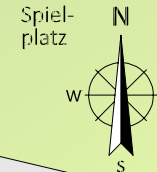
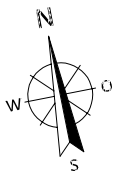
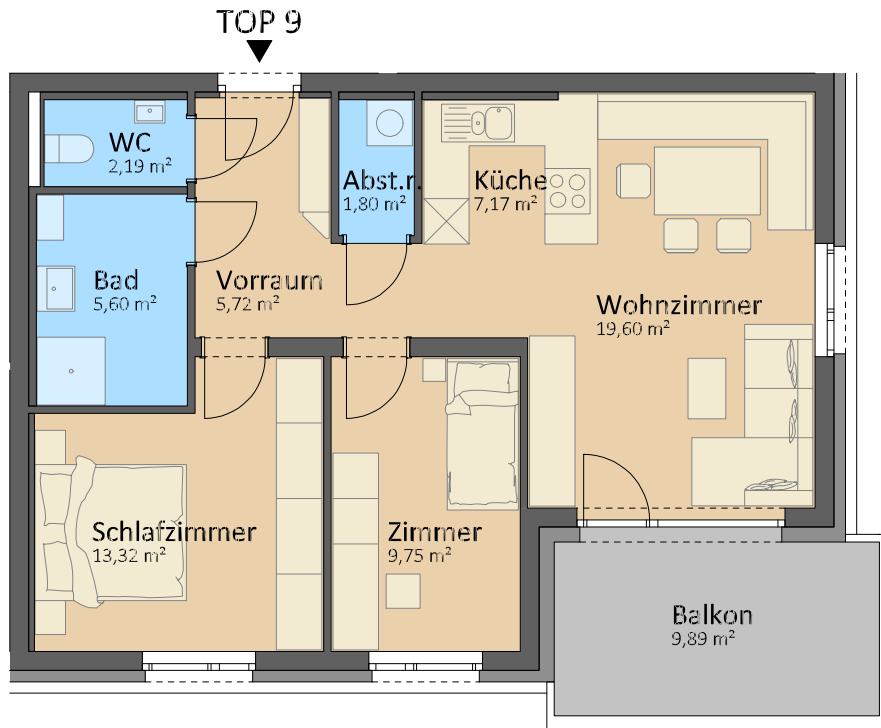


# MMS Immobilien GmbH NEUBAU WOHNANLAGE

Hofmark 41, 4742 Pram

2.Obergeschoss **TOP 9**

Wohnfläche	65,15 m <sup>2</sup>
Balkon	9,89 m <sup>2</sup>
Gesamt	75,04 m <sup>2</sup>

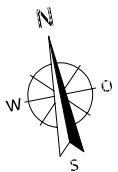
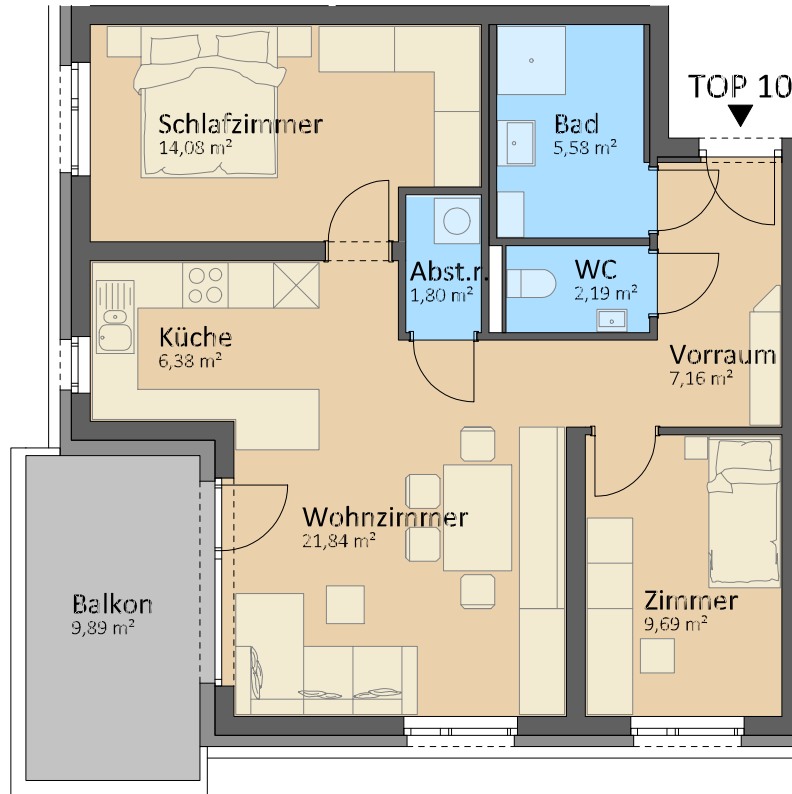


# MMS Immobilien GmbH NEUBAU WOHNANLAGE

Hofmark 41, 4742 Pram

## 2.Obergeschoss TOP 10

Wohnfläche	68,72 m <sup>2</sup>
Balkon	9,89 m <sup>2</sup>
Gesamt	78,61 m <sup>2</sup>

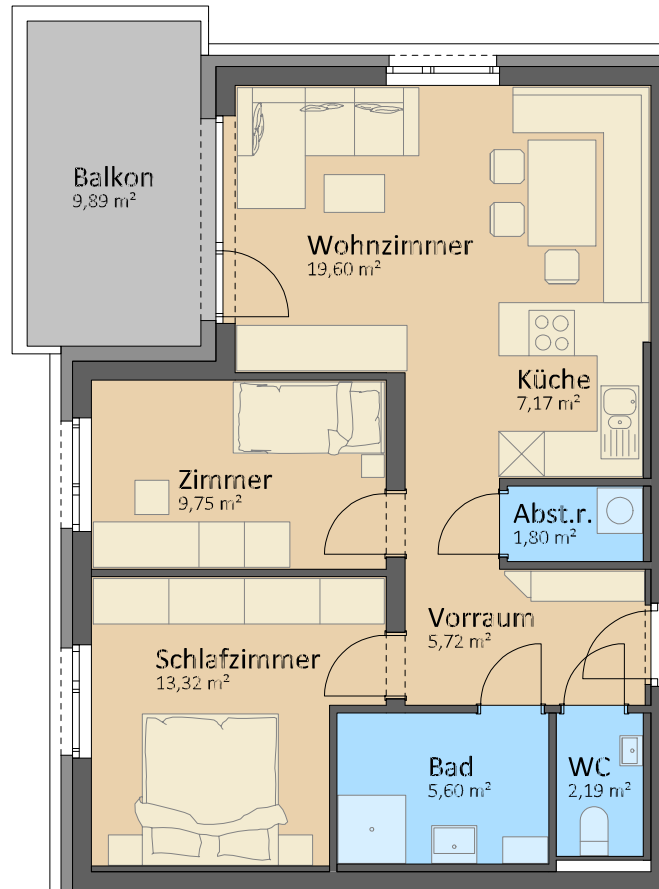


# MMS Immobilien GmbH NEUBAU WOHNANLAGE

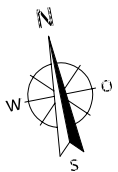
Hofmark 41, 4742 Pram

2.Obergeschoss TOP 11

Wohnfläche	65,15 m <sup>2</sup>
Balkon	9,89 m <sup>2</sup>
Gesamt	75,04 m <sup>2</sup>



← TOP 11

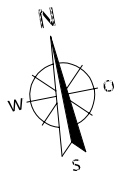
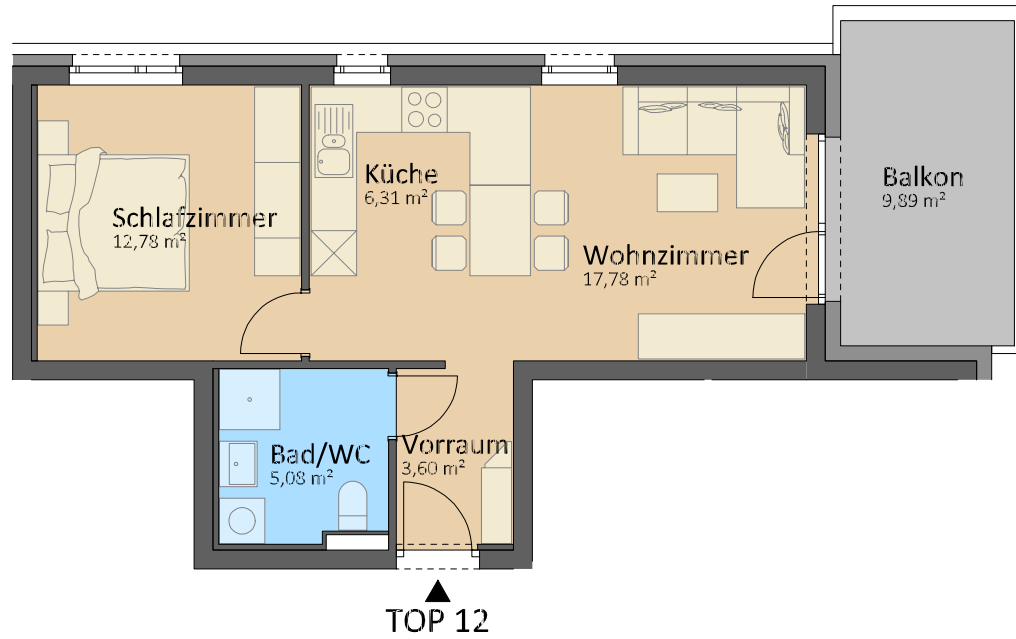


# MMS Immobilien GmbH NEUBAU WOHNANLAGE

Hofmark 41, 4742 Pram

2.Obergeschoss **TOP 12**

Wohnfläche	45,55 m <sup>2</sup>
Balkon	9,89 m <sup>2</sup>
Gesamt	55,44 m <sup>2</sup>





# MMS Immobilien GmbH NEUBAU WOHNANLAGE

Hofmark 41, 4742 Pram

2.Obergeschoss TOP 13

Wohnfläche	42,89 m <sup>2</sup>
Balkon	9,24 m <sup>2</sup>
Gesamt	52,13 m <sup>2</sup>

