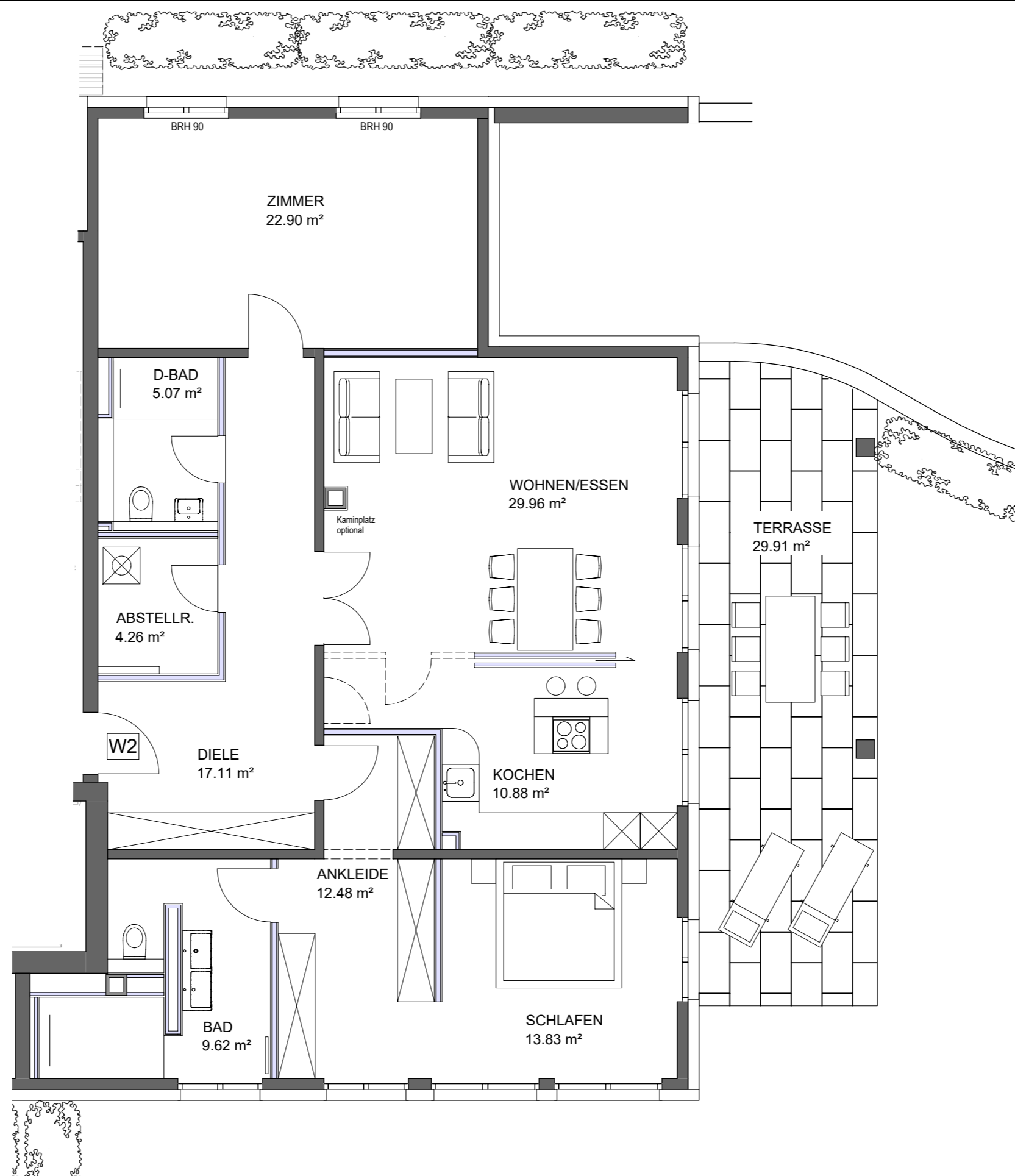
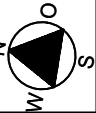
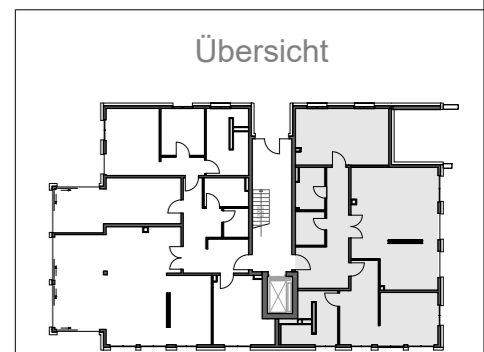


# Stadtvilla Müllenhoffweg 64



1 m 1 m 1 m



**Wohnung 2**

Erdgeschoss

Wohnfläche gem. WoFIVO : 141,05 m<sup>2</sup>  
(Terrasse zu 50%)

nutzbare Wohnfläche : 156,00 m<sup>2</sup>

Maßstab 1:75