

Grundriss Erdgeschoss

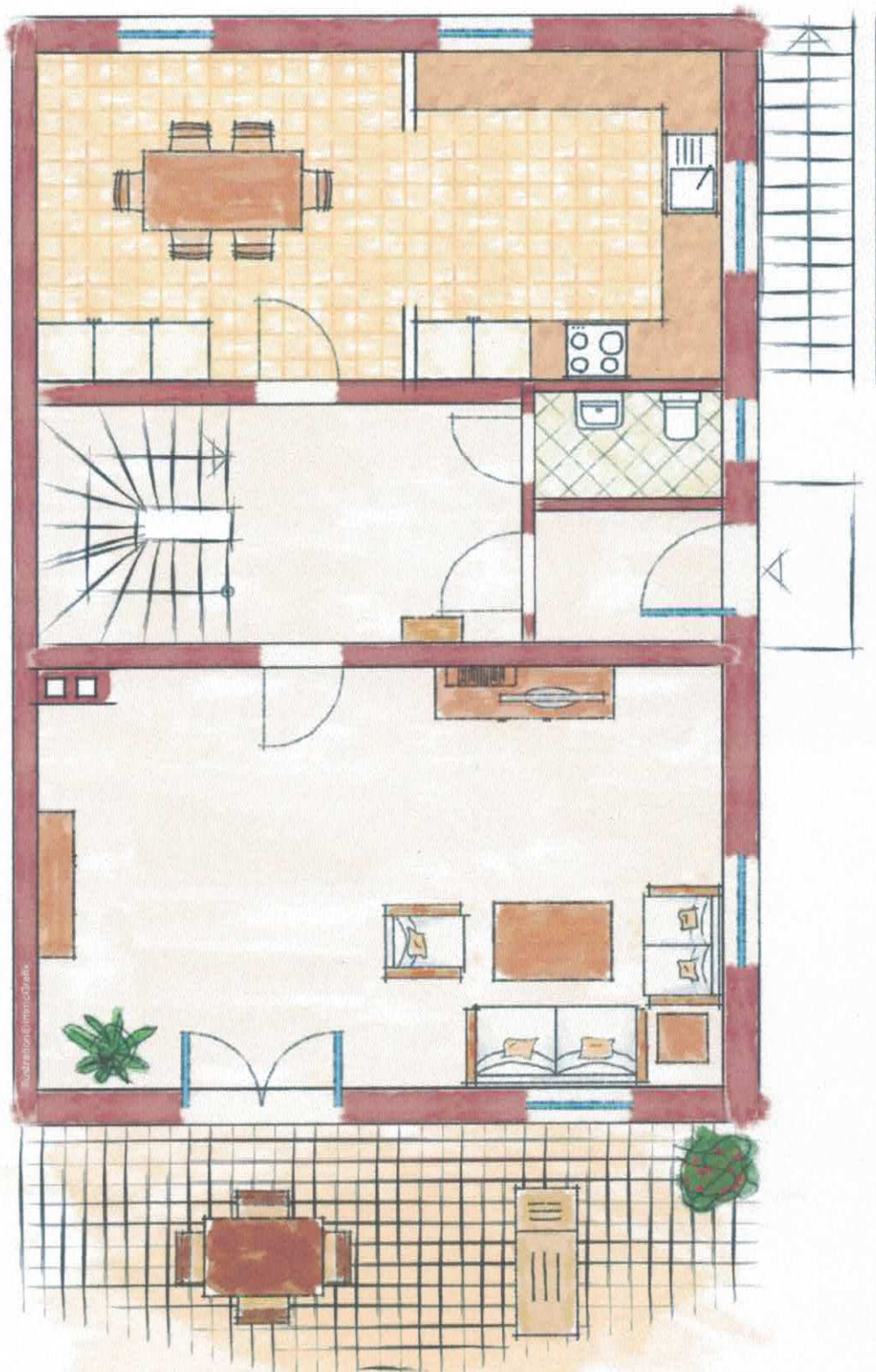
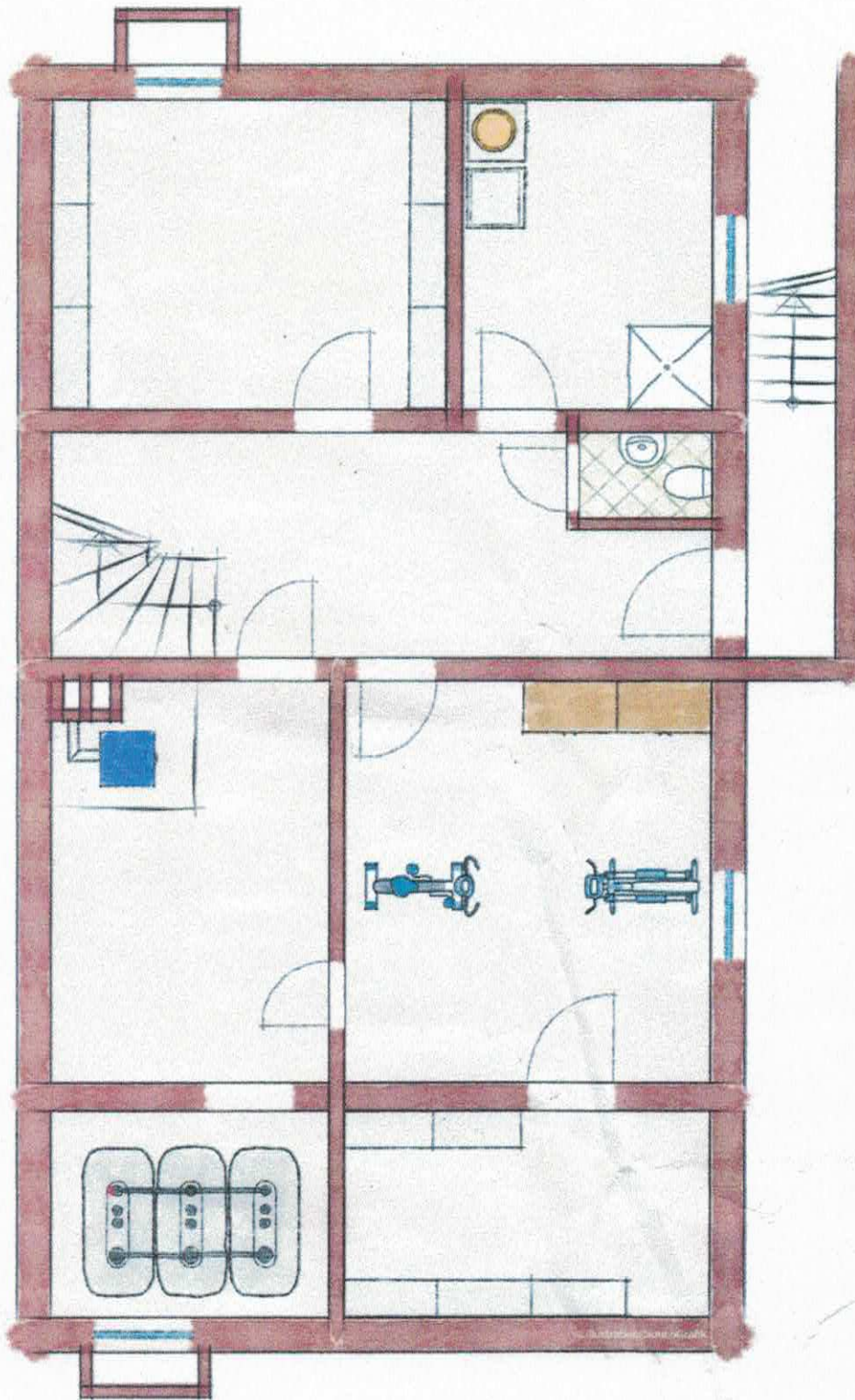


Illustration of a floor plan for a two-story house. The plan is divided into two main sections by a central hallway. The top section (left) shows a bedroom with a yellow bed and a blue star, a bathroom with a bathtub, toilet, and sink, and a kitchen with a stove and sink. The top section (right) is a large open space with a staircase and a potted plant. The bottom section (left) shows a bedroom with a red bed and purple pillows, a bathroom with a toilet and sink, and a kitchen with a stove and sink. The bottom section (right) is a large open space with a potted plant. The house has a red roof and a small porch with a table and chairs.

Grundriss Dachgeschoss



Grundriss Kellergeschoss



Alle hier dargestellten Grundrissabildungen sind zur Maßentnahme nicht geeignet.