



AEOLIAN SUNSET

MEDITERRANEAN LIVING





CAPO VATICANO

La "Costa degli Dei" è il nome con cui è stata battezzata un tratto di costa del Tirreno meridionale, ricadente interamente nella provincia di Vibo Valentia. È la parte di costa che delimita il cosiddetto corno di Calabria, un tratto di costa che conta circa 55 Km di litorale stupendo, unico in Italia. Unico per le tipologie di coste: dalle lunghe e ampie spiagge bianche con campeggi, residence, villaggi attrezzati, a quelle frastagliate e selvagge con la possibilità di fare immersioni subacquee nei fondali ricchi di fauna marina. Viene anche chiamata La Costa Bella per i suggestivi panorami con le Isole Eolie che distano solo 32 miglia nautiche.

CAPO VATICANO: in soli sette chilometri di acque limpidissime che si tingono di tutte le gradazioni di colori che vanno dal turchese, al blu profondo e all'azzurro, si susseguono panorami di una bellezza di indescrivibile fascino. È un susseguirsi di calette dai fondali sabbiosi e cristallini, ritagliati tra speroni rocciosi, lisce scogliere di tufo e rupi appuntite di granito a picco sul mare, con gole e grotte raggiungibili solo con le barche di esperti pescatori.



TROPEA

SANTA DOMENICA : Elegante borgo a soli 3 km da Tropea, Santa Domenica di Ricadi è compresa nella costa di Capo Vaticano con le spiagge di Baia di Riaci, Formicoli, Torre Marino, Torre Ruffa e Grotticelle. La più famosa è certamente Baia di Riaci, caratteristica per la presenza di un maestoso scoglio, luogo ideale per fare immersioni subacquee. Da visitare l'antico borgo situato su una collinetta, alla cui sommità si staglia la Chiesa dedicata a Santa Domenica.

TROPEA : Sorge al centro della famosa "Costa degli Dei" sul versante tirrenico della Calabria. Offre tramonti unici sull'arcipelago delle Isole Eolie. Il simbolo per eccellenza di Tropea è la Chiesa di Santa Maria dell'Isola che sorge su un bellissimo isolotto che è riconosciuto come simbolo di Tropea nel mondo. Lo scenario naturale esprime tutta la bellezza dell'ambiente mediterraneo. Fra strade strette e piazze improvvisate, il nucleo storico offre un susseguirsi di scorci suggestivi e viste sulle abitazioni a picco sulla rupe e sul mare di un intenso colore turchese.



S.DOMENICA



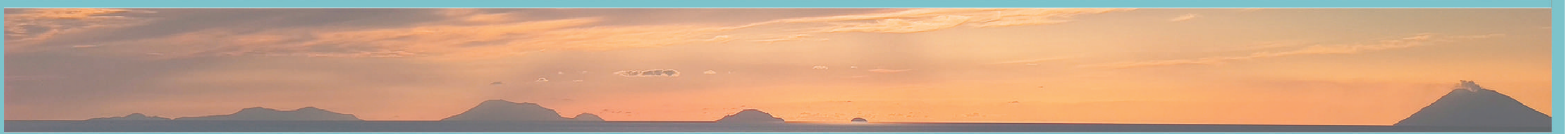
S.DOMENICA



S.DOMENICA

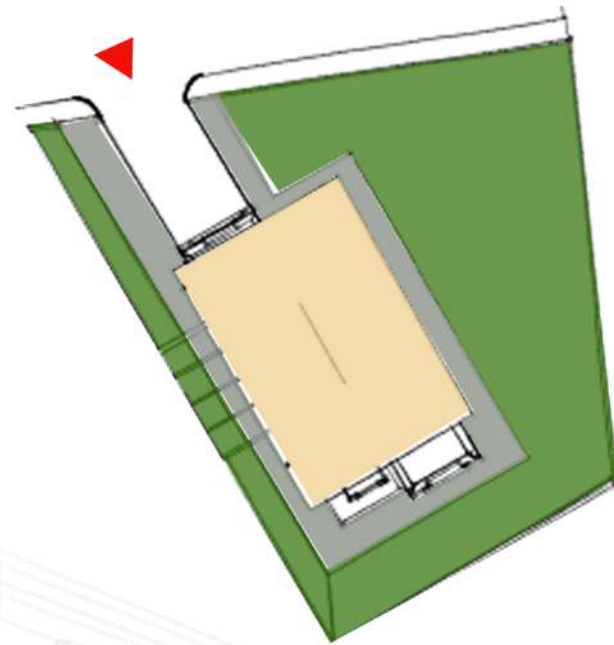
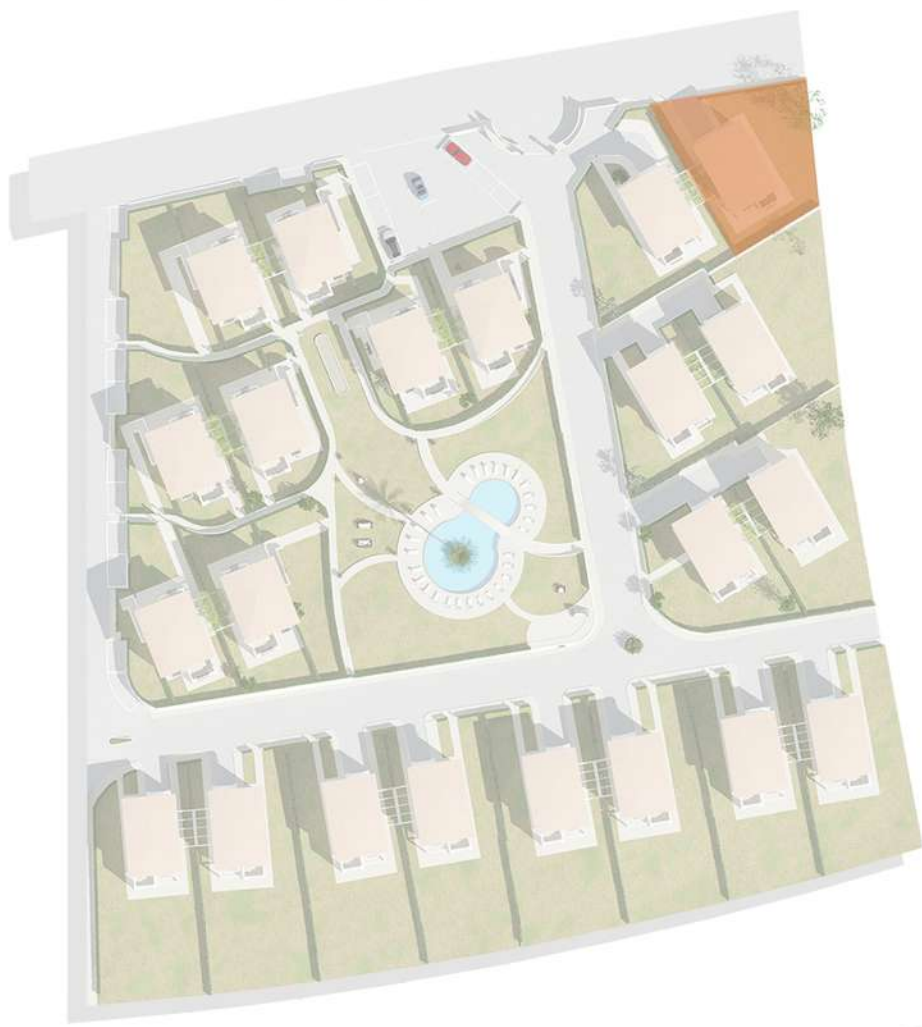












GROUND FLOOR



GROUND FLOOR



FIRST FLOOR



FIRST FLOOR



INTERNAL MQ - 127,65 mq

BALCONY - 6,45 mq

TERRACE - 11,20 mq

BED - 3

BATH - 2\3

VERANDA - 11,20 mq

PERGOLA - 25 mq

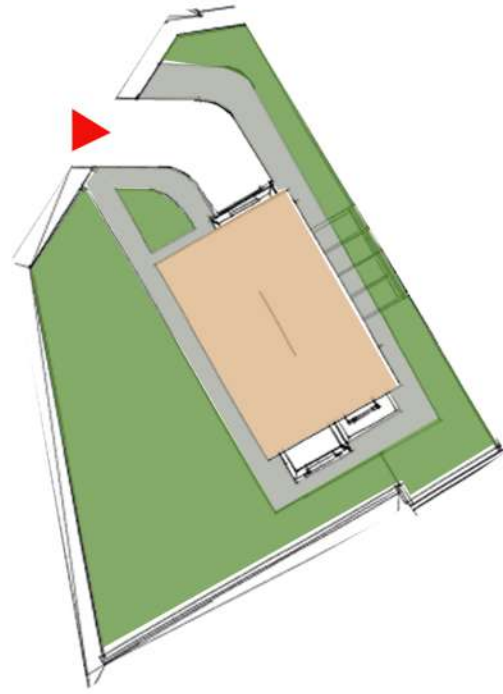
GARDEN - 341 mq

PARK - CAR PORT & GARAGE

SEA VIEW - YES

TOTAL mq - 182,15 MQ





GROUND FLOOR



GROUND FLOOR

FIRST FLOOR



FIRST FLOOR



INTERNAL MQ - 127,65 mq

BALCONY - 6,45 mq

TERRACE - 11,20 mq

BED - 3

BATH - 2\3

VERANDA - 11,20 mq

PERGOLA - 25 mq

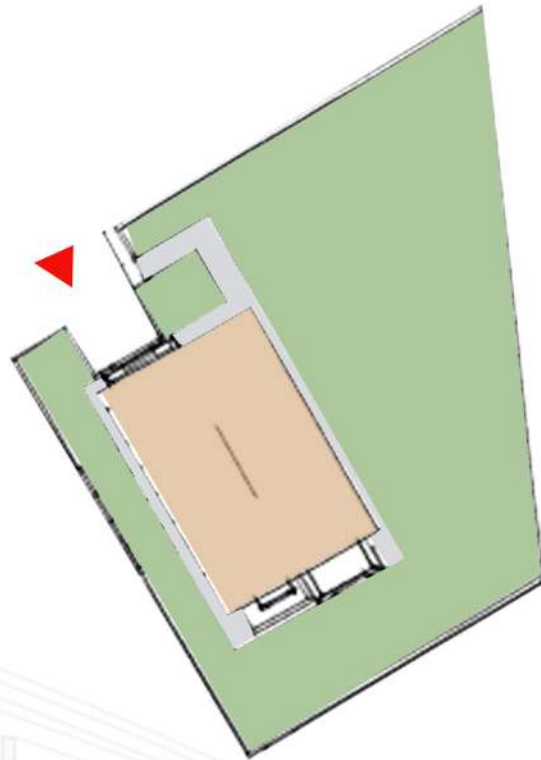
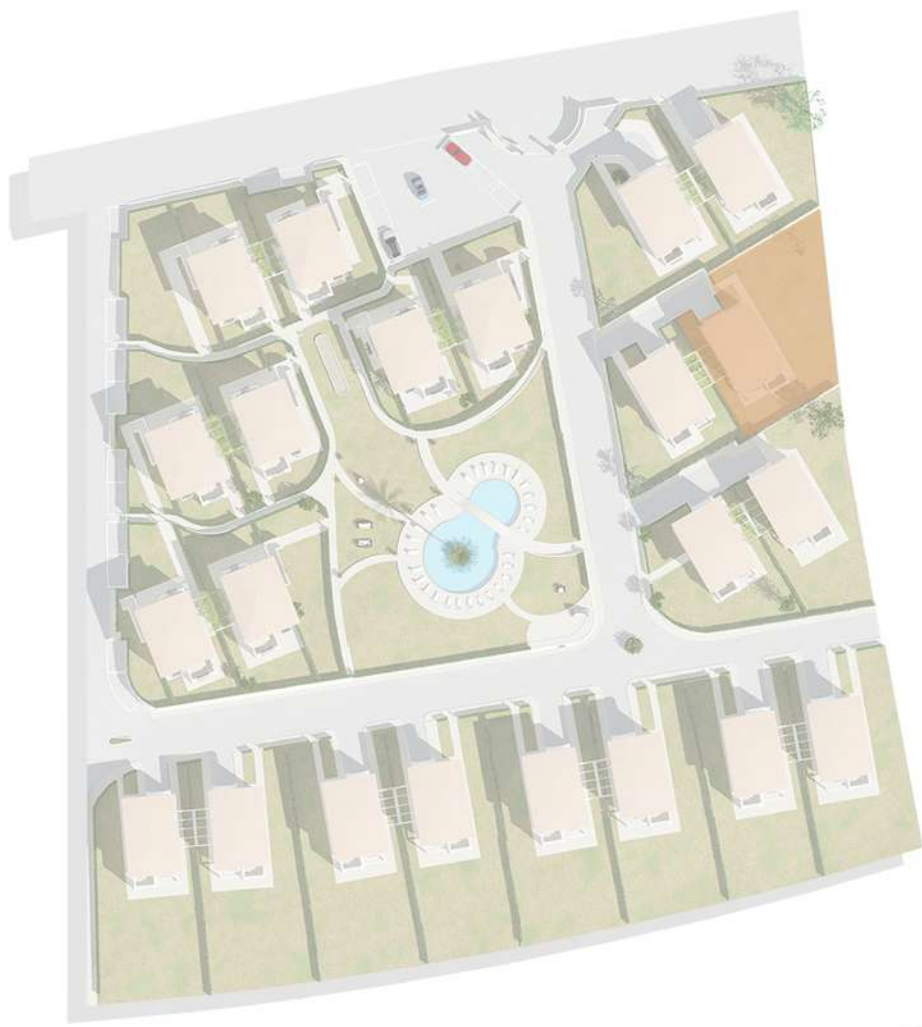
GARDEN - 400 mq

PARK - CAR PORT & GARAGE

SEA VIEW - YES

TOTAL mq - 182,15 MQ





GROUND FLOOR



GROUND FLOOR



FIRST FLOOR



FIRST FLOOR



INTERNAL MQ - 127,65 mq

BALCONY - 6,45 mq

TERRACE - 11,20 mq

BED - 3

BATH - 2\3

VERANDA - 11,20 mq

PERGOLA - 25 mq

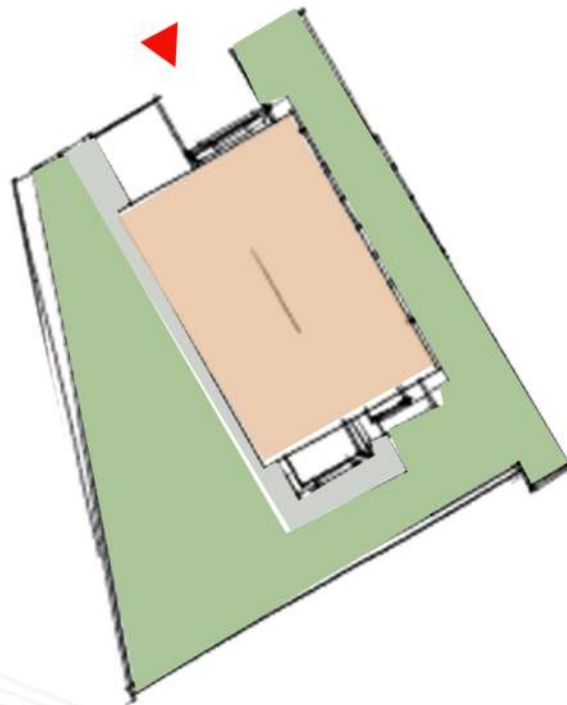
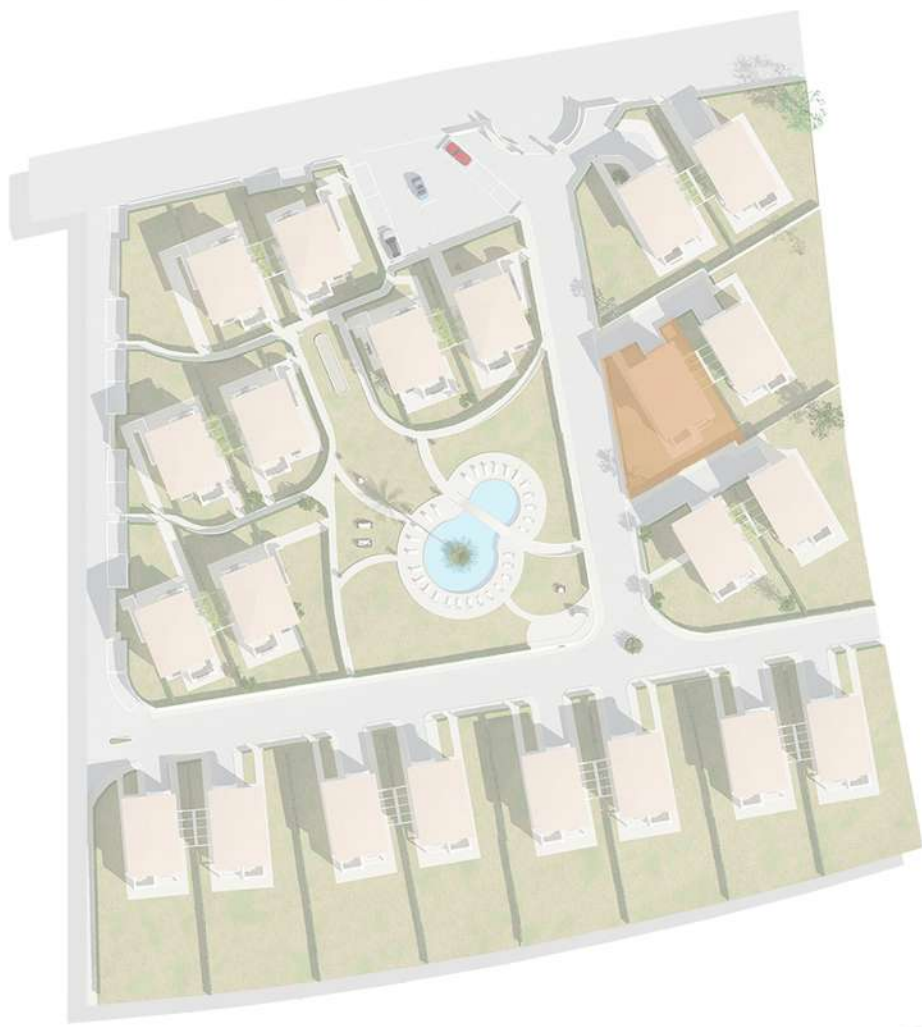
GARDEN - 422 mq

PARK - CAR PORT & GARAGE

SEA VIEW - YES

TOTAL mq - 182,15 MQ





GROUND FLOOR



GROUND FLOOR

FIRST FLOOR



FIRST FLOOR



INTERNAL MQ - 127,65 mq

BALCONY - 6,45 mq

TERRACE - 11,20 mq

BED - 3

BATH - 2\3

VERANDA - 11,20 mq

PERGOLA - 25 mq

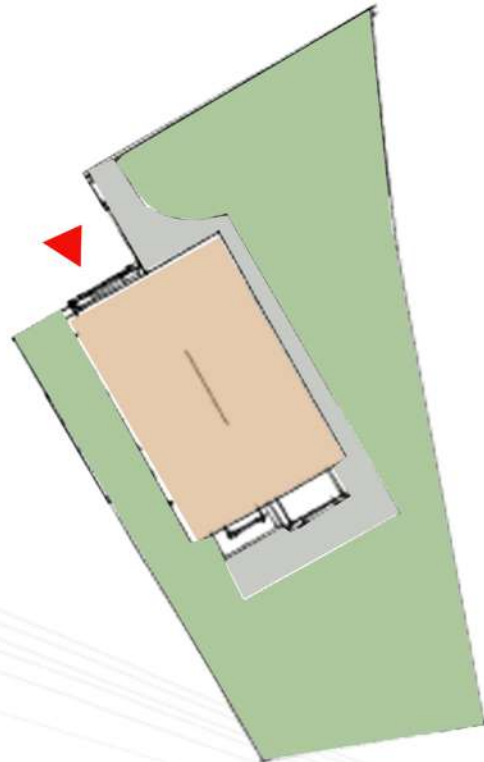
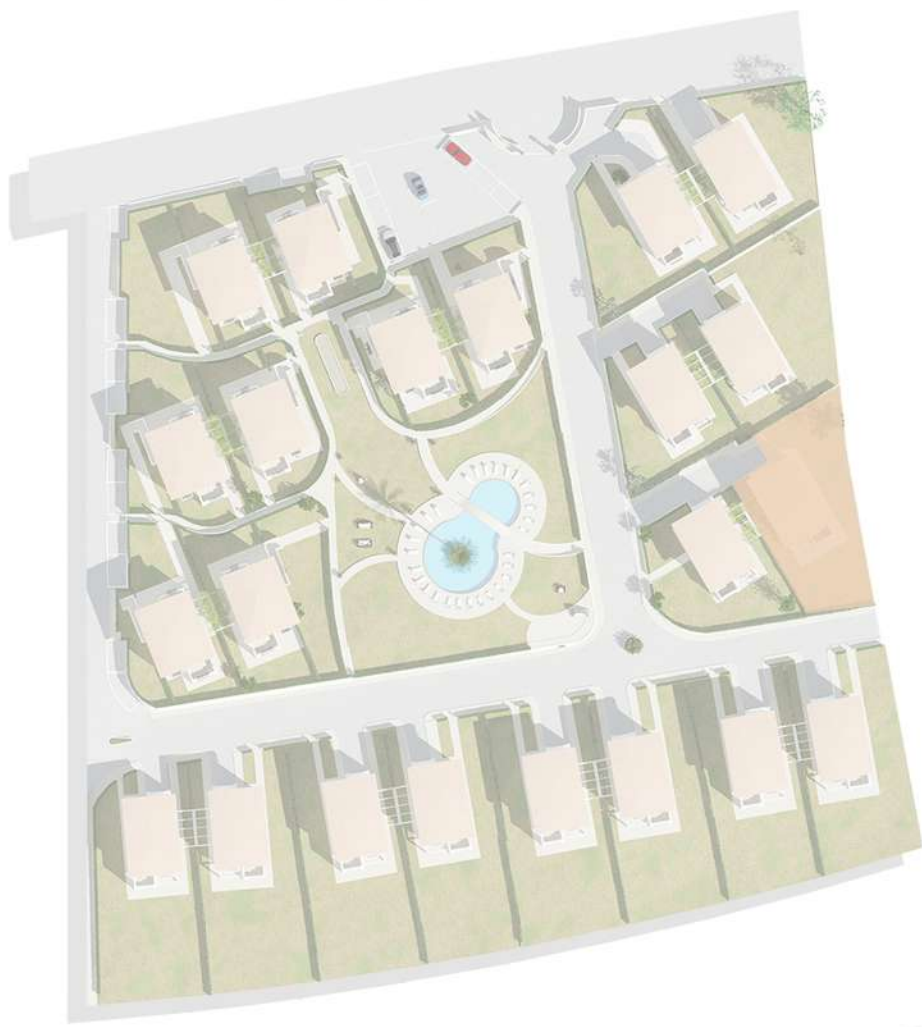
GARDEN - 263 mq

PARK - CAR PORT & GARAGE

SEA VIEW - YES

TOTAL mq - 182,15 MQ





GROUND FLOOR



GROUND FLOOR



FIRST FLOOR



FIRST FLOOR



INTERNAL MQ - 127,65 mq

BALCONY - 6,45 mq

TERRACE - 11,20 mq

BED - 3

BATH - 2\3

VERANDA - 11,20 mq

PERGOLA - 25 mq

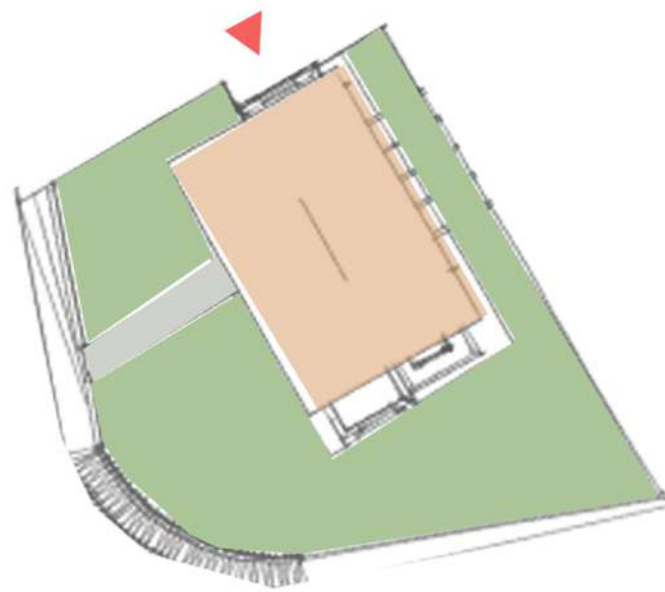
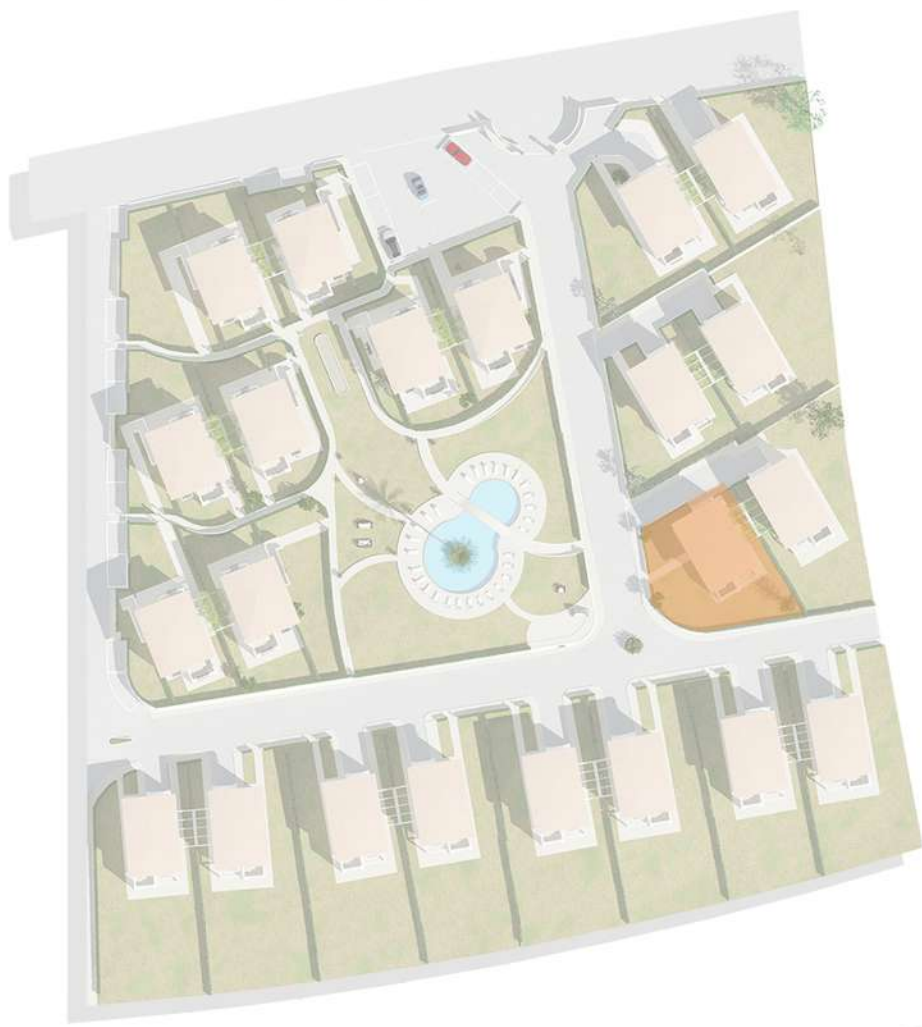
GARDEN - 440 mq

PARK - CAR PORT & GARAGE

SEA VIEW - YES

TOTAL mq - 182,15 MQ





GROUND FLOOR



GROUND FLOOR

FIRST FLOOR



FIRST FLOOR



INTERNAL MQ - 127,65 mq

BALCONY - 6,45 mq

TERRACE - 11,20 mq

BED - 3

BATH - 2\3

VERANDA - 11,20 mq

PERGOLA - 25 mq

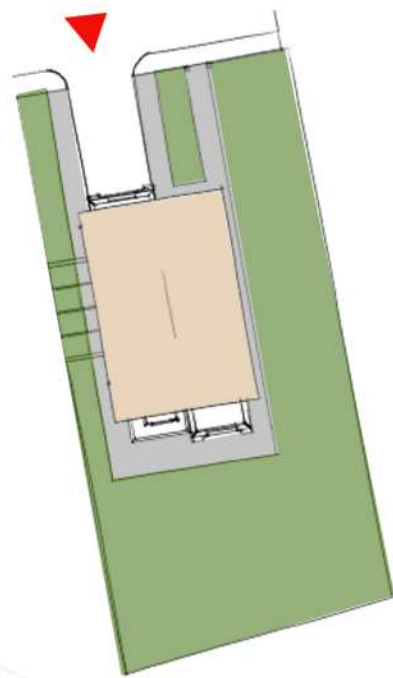
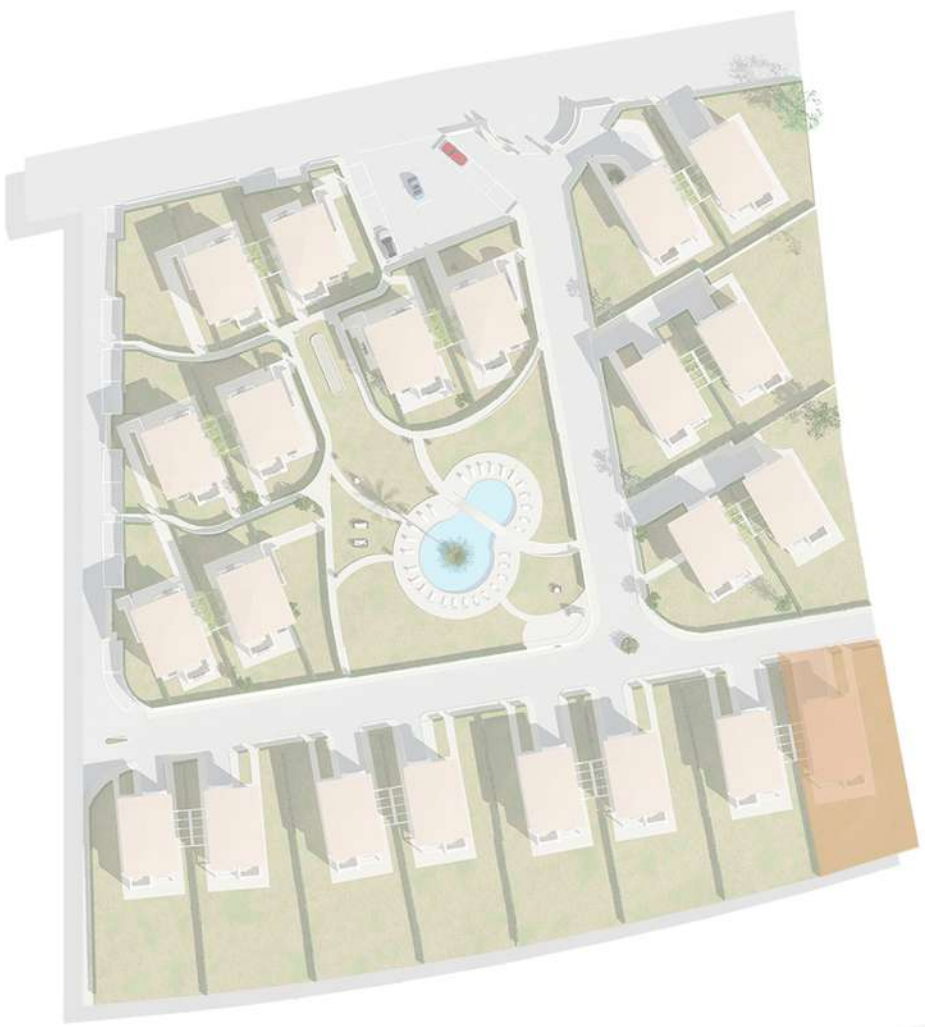
GARDEN - 210 mq

PARK - CAR PORT & GARAGE

SEA VIEW - YES

TOTAL mq - 182,15 MQ





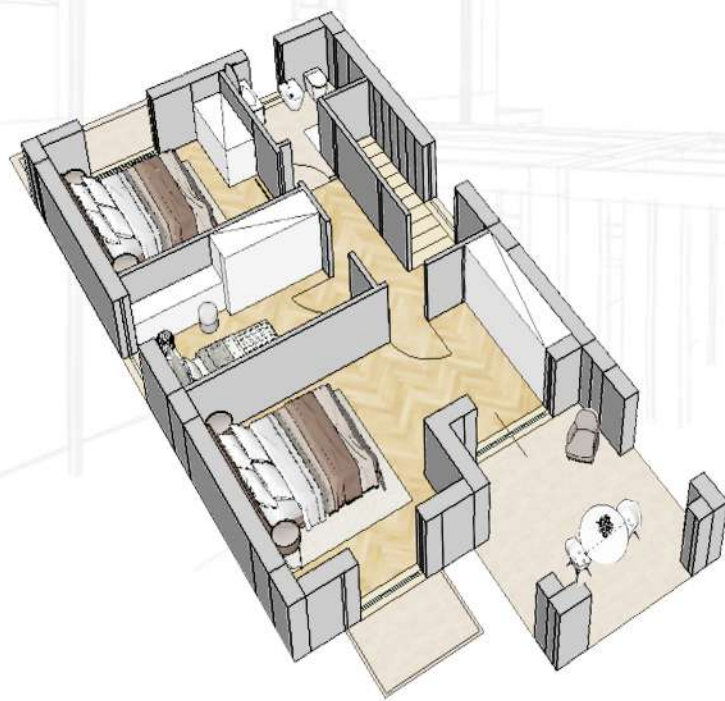
GROUND FLOOR



GROUND FLOOR



FIRST FLOOR



FIRST FLOOR



INTERNAL MQ - 127,65 mq

BALCONY - 6,45 mq

TERRACE - 11,20 mq

BED - 3

BATH - 2\3

VERANDA - 11,20 mq

PERGOLA - 25 mq

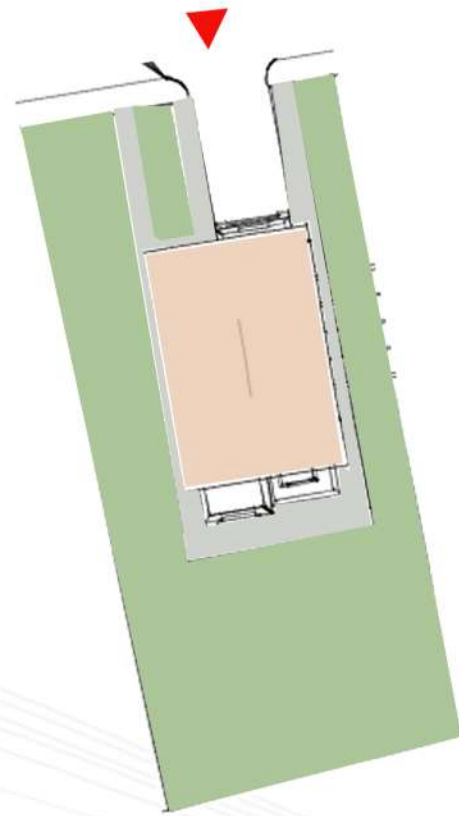
GARDEN - 420 mq

PARK - CAR PORT & GARAGE

SEA VIEW - YES

TOTAL mq - 182,15 MQ





GROUND FLOOR



GROUND FLOOR

FIRST FLOOR



FIRST FLOOR



INTERNAL MQ - 127,65 m²

BALCONY - 6,45 m²

TERRACE - 11,20 m²

BED - 3

BATH - 2\3

VERANDA - 11,20 m²

PERGOLA - 25 m²

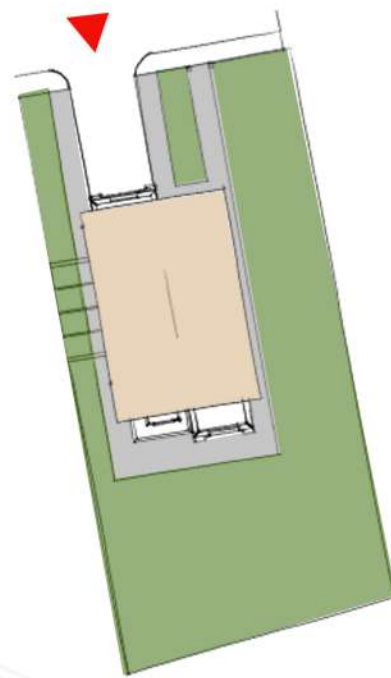
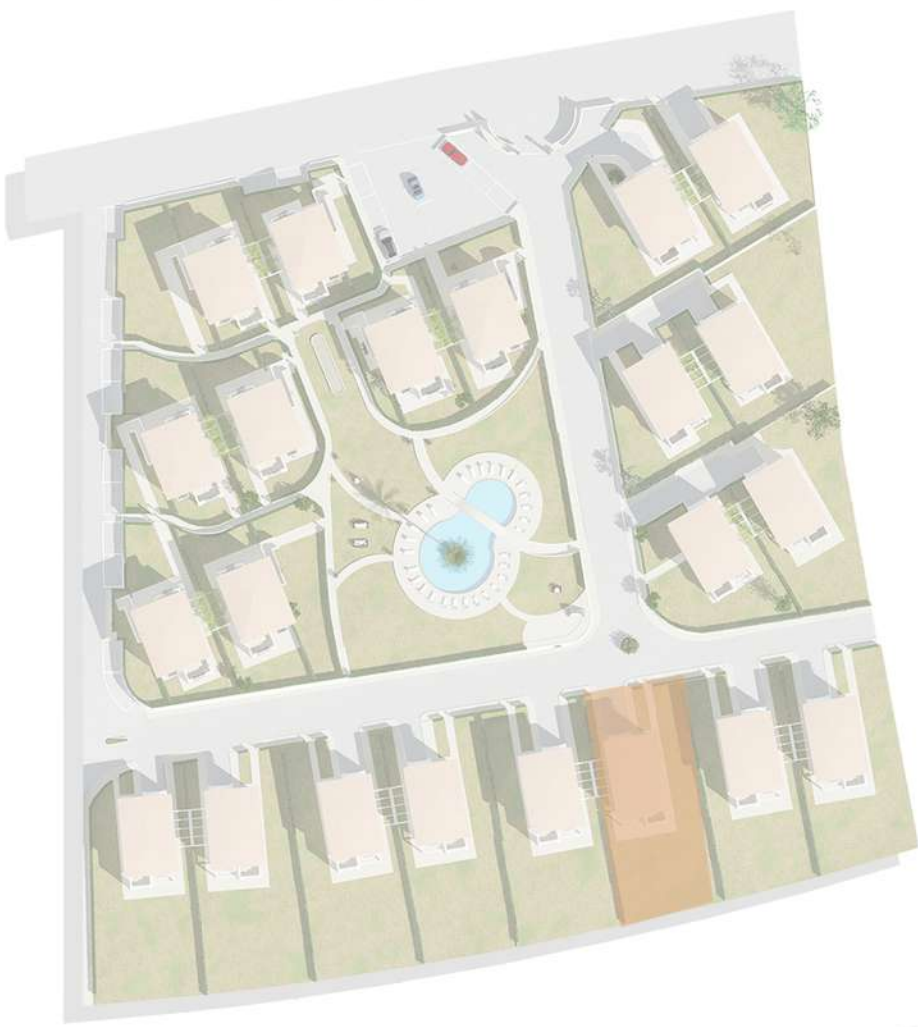
GARDEN - 421 m²

PARK - CAR PORT & GARAGE

SEA VIEW - YES

TOTAL m² - 182,15 MQ





GROUND FLOOR



GROUND FLOOR



FIRST FLOOR



FIRST FLOOR



INTERNAL MQ - 127,65 mq

BALCONY - 6,45 mq

TERRACE - 11,20 mq

BED - 3

BATH - 2\3

VERANDA - 11,20 mq

PERGOLA - 25 mq

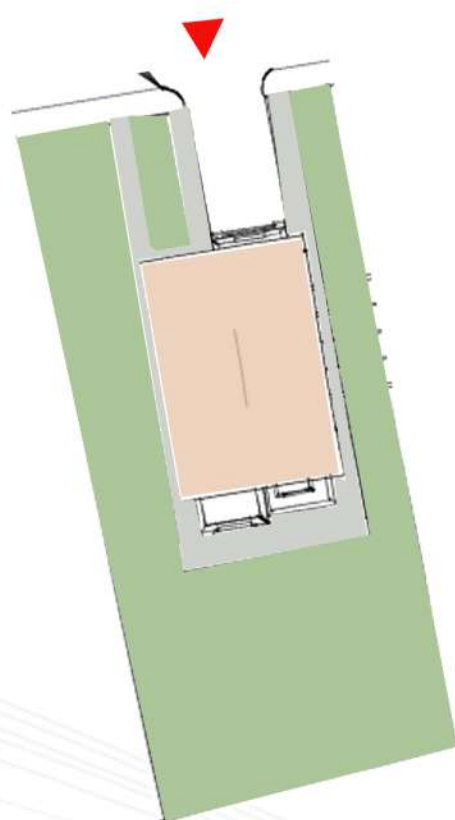
GARDEN - 447 mq

PARK - CAR PORT & GARAGE

SEA VIEW - YES

TOTAL mq - 182,15 MQ





GROUND FLOOR

FIRST FLOOR



INTERNAL MQ - 127,65 m²
 BALCONY - 6,45 m²
 TERRACE - 11,20 m²
 BED - 3
 BATH - 2\3

VERANDA - 11,20 m²
 PERGOLA - 25 m²
 GARDEN - 488 m²
 PARK - CAR PORT & GARAGE
 SEA VIEW - YES

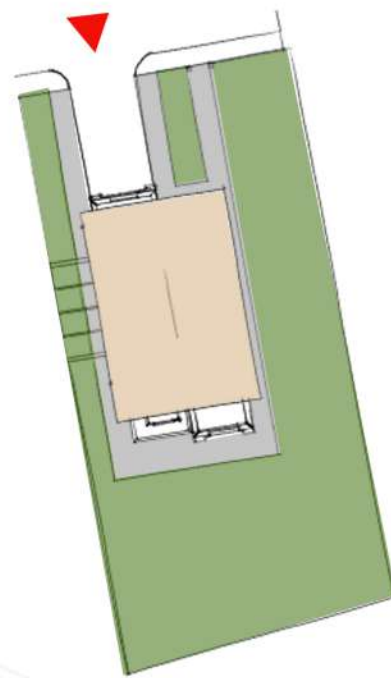
TOTAL m² - 182,15 MQ

GROUND FLOOR



FIRST FLOOR





GROUND FLOOR



GROUND FLOOR



FIRST FLOOR



FIRST FLOOR



INTERNAL MQ - 127,65 mq

BALCONY - 6,45 mq

TERRACE - 11,20 mq

BED - 3

BATH - 2\3

VERANDA - 11,20 mq

PERGOLA - 25 mq

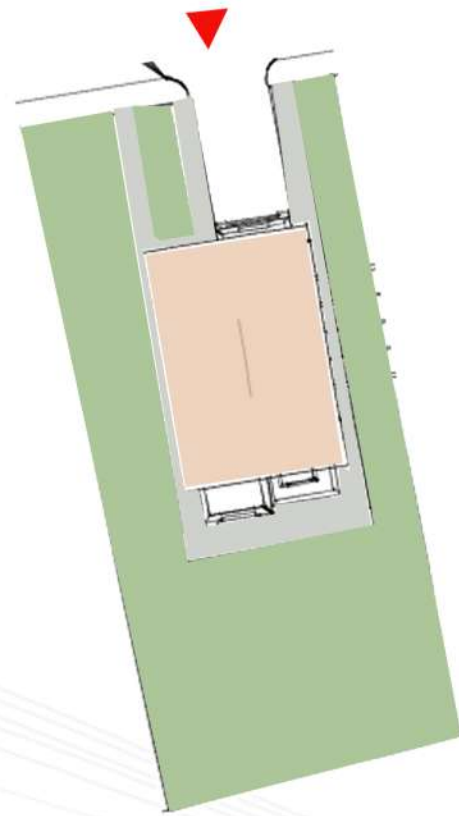
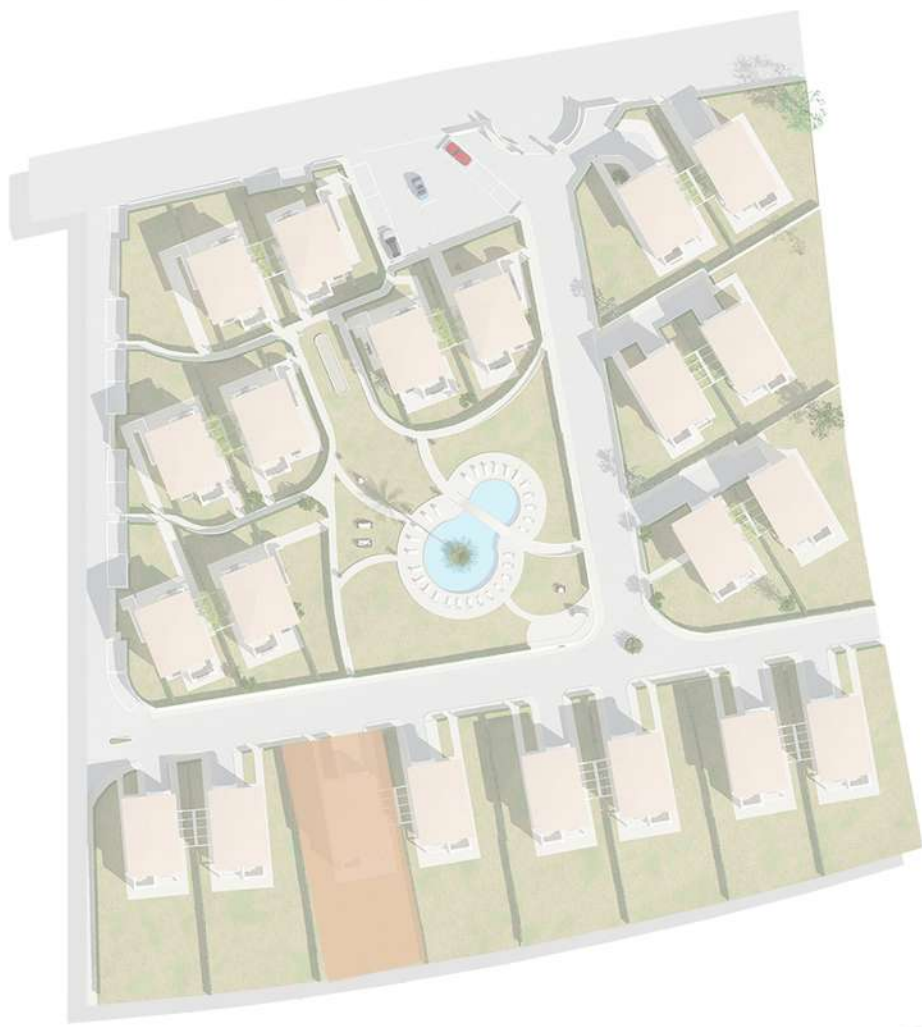
GARDEN - 457 mq

PARK - CAR PORT & GARAGE

SEA VIEW - YES

TOTAL mq - 182,15 MQ





GROUND FLOOR



GROUND FLOOR

FIRST FLOOR



FIRST FLOOR



INTERNAL MQ - 127,65 m²

BALCONY - 6,45 m²

TERRACE - 11,20 m²

BED - 3

BATH - 2\3

VERANDA - 11,20 m²

PERGOLA - 25 m²

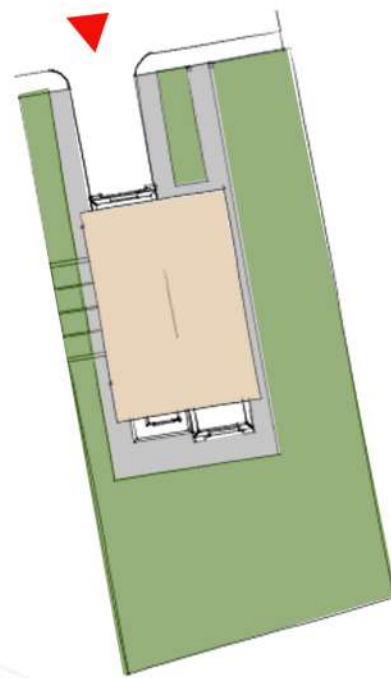
GARDEN - 482 m²

PARK - CAR PORT & GARAGE

SEA VIEW - YES

TOTAL m² - 182,15 M²





GROUND FLOOR



GROUND FLOOR



FIRST FLOOR



FIRST FLOOR



INTERNAL MQ - 127,65 mq

BALCONY - 6,45 mq

TERRACE - 11,20 mq

BED - 3

BATH - 2\3

VERANDA - 11,20 mq

PERGOLA - 25 mq

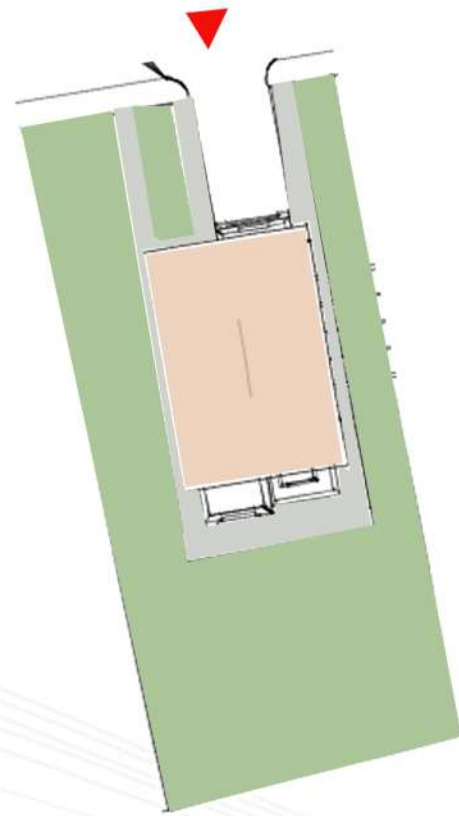
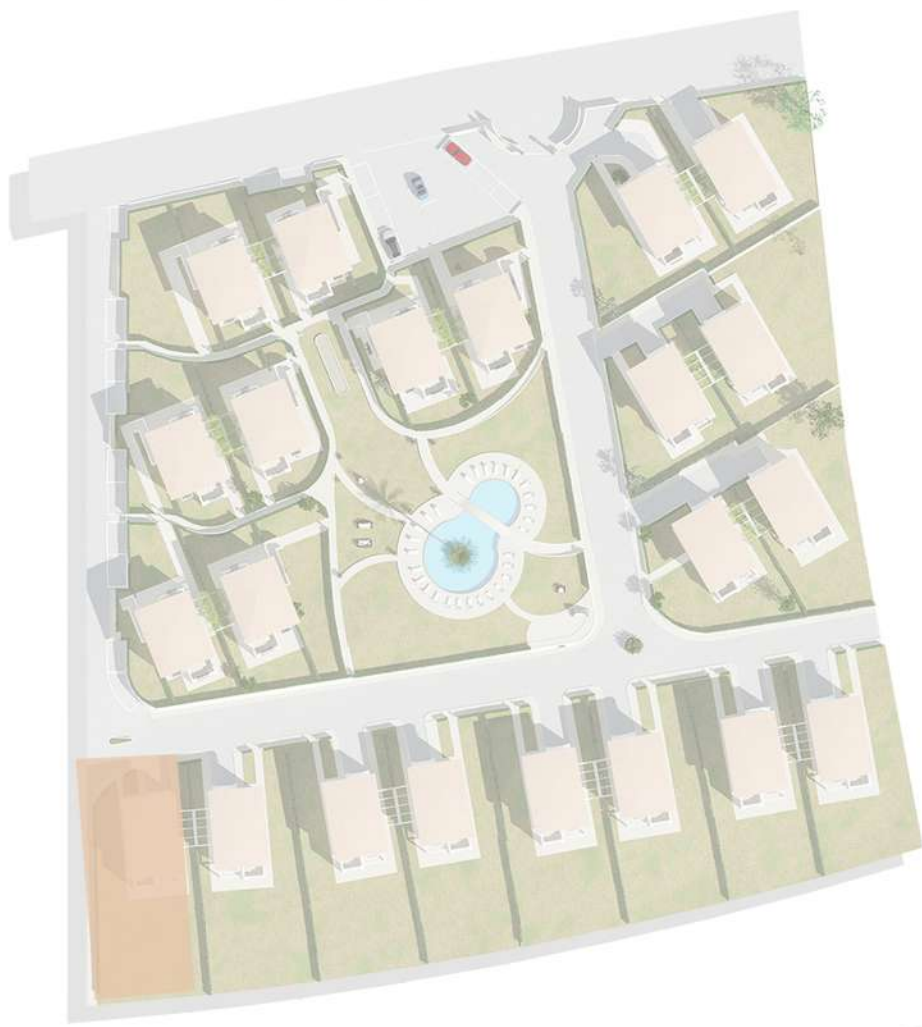
GARDEN - 484 mq

PARK - CAR PORT & GARAGE

SEA VIEW - YES

TOTAL mq - 182,15 MQ





GROUND FLOOR



GROUND FLOOR

FIRST FLOOR



FIRST FLOOR



INTERNAL MQ - 127,65 mq

BALCONY - 6,45 mq

TERRACE - 11,20 mq

BED - 3

BATH - 2\3

VERANDA - 11,20 mq

PERGOLA - 25 mq

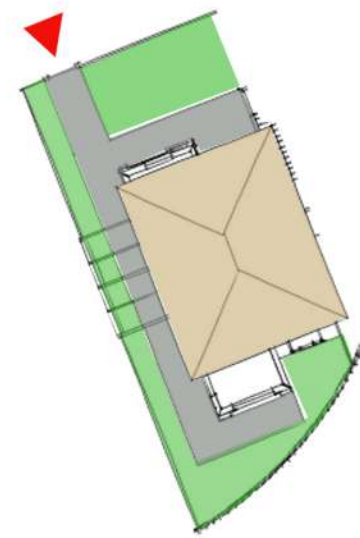
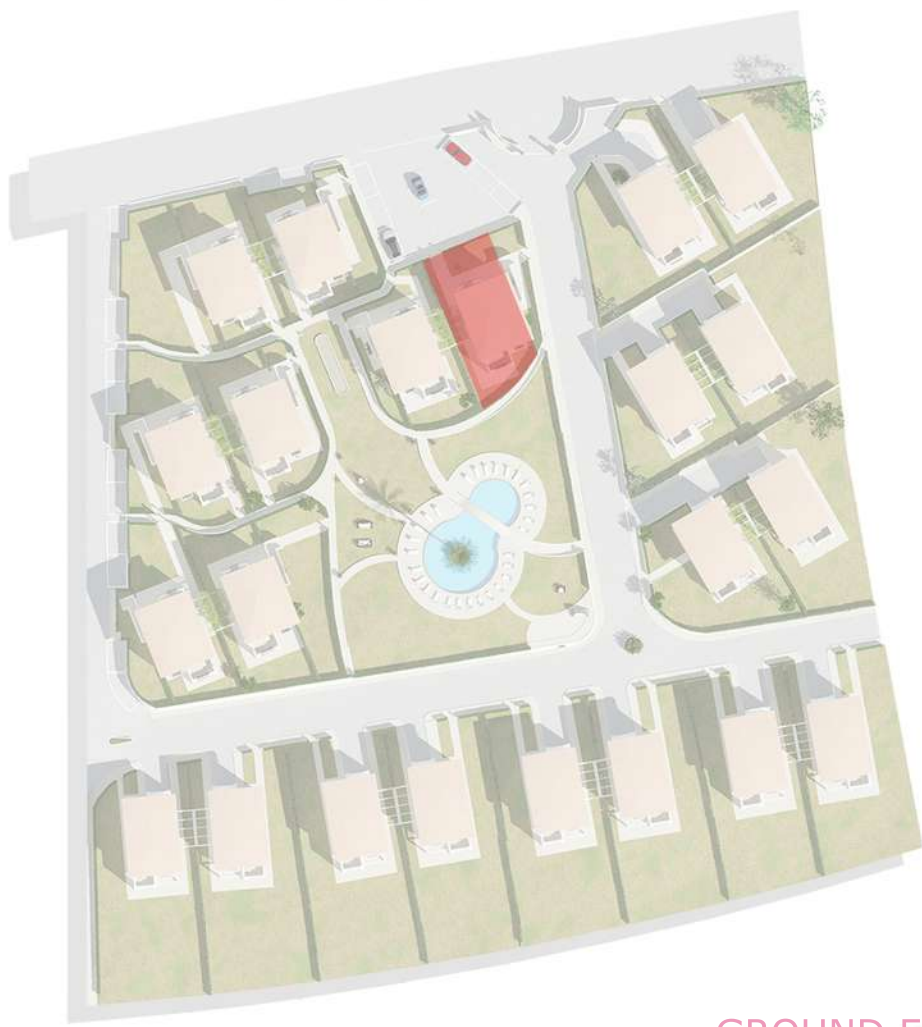
GARDEN - 467 mq

PARK - CAR PORT & GARAGE

SEA VIEW - YES

TOTAL mq - 182,15 MQ





GROUND FLOOR



GROUND FLOOR

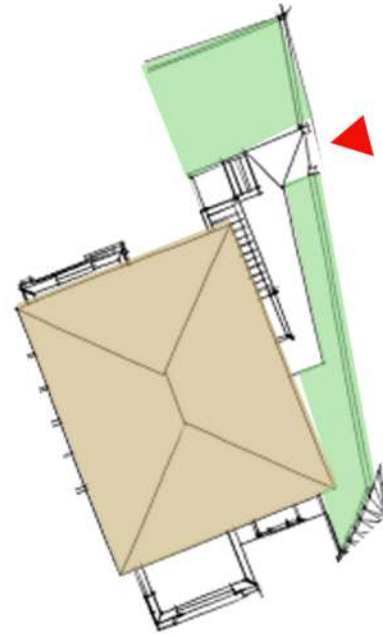
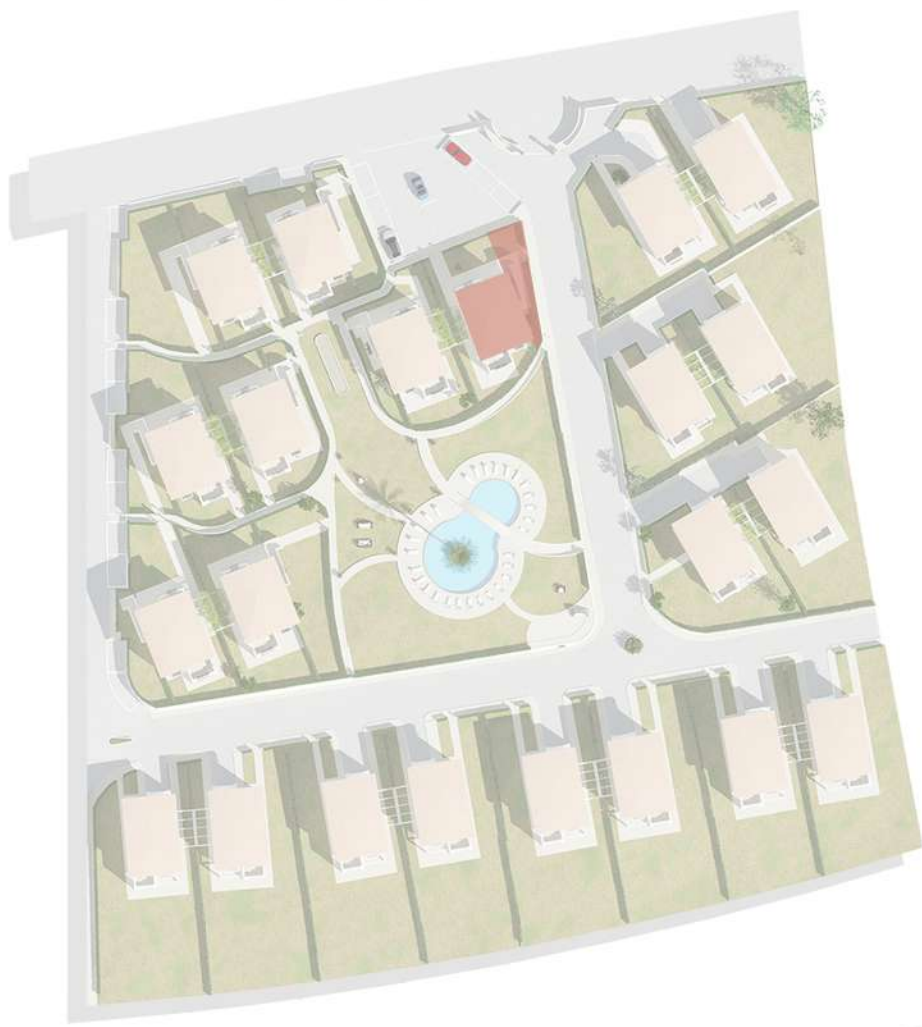


INTERNAL MQ - 70,35 mq
BALCONY - 6,95 mq
TERRACE - 15,65 mq
BED - 2\3
BATH - 1

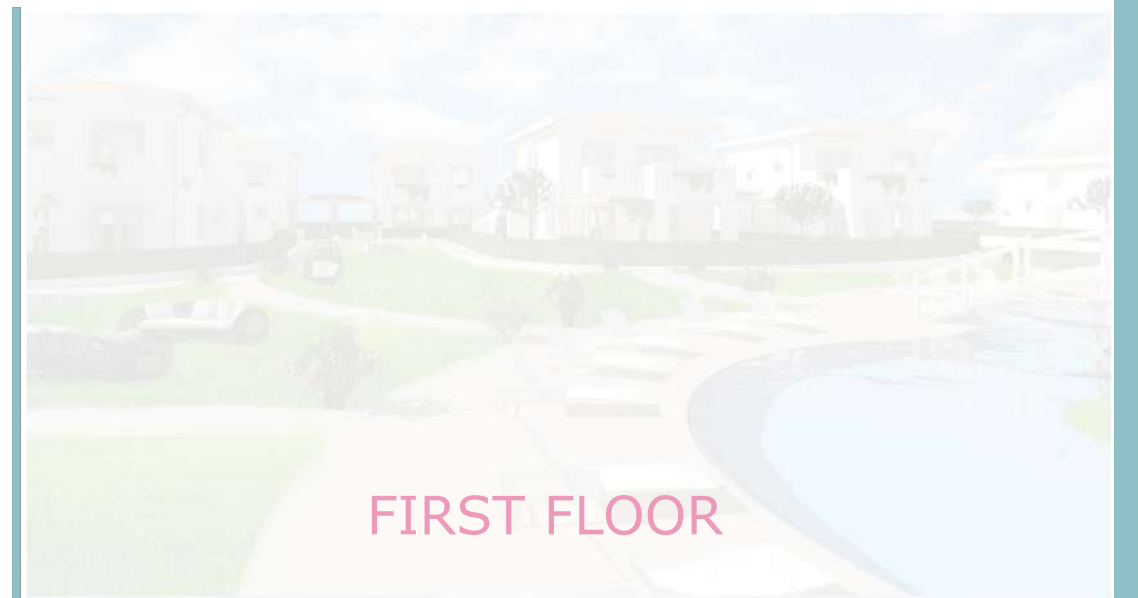
PERGOLA - 16,50 mq
GARDEN - 147 mq
PARK - CAR PORT
SEA VIEW - YES

TOTAL mq - 132,05 MQ





FIRST FLOOR



FIRST FLOOR

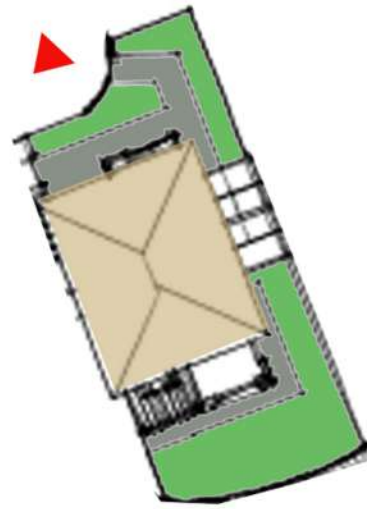
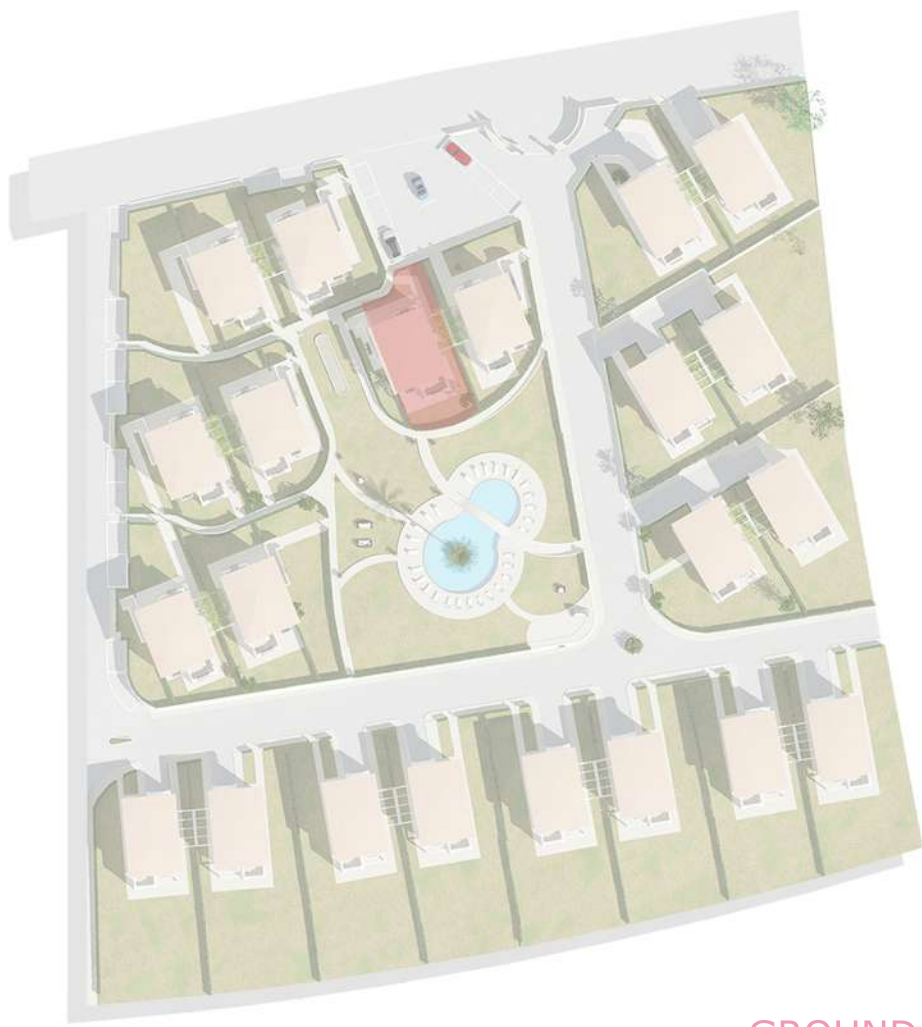


INTERNAL MQ - 60,05 mq
BALCONY - 6,95 mq
TERRACE - 15,65 mq
BED - 2\3
BATH - 1

VERANDA - 15,65 mq
GARDEN - 68 mq
PARK - CAR PORT
SEA VIEW - YES

TOTAL mq - 98,30 MQ





GROUND FLOOR

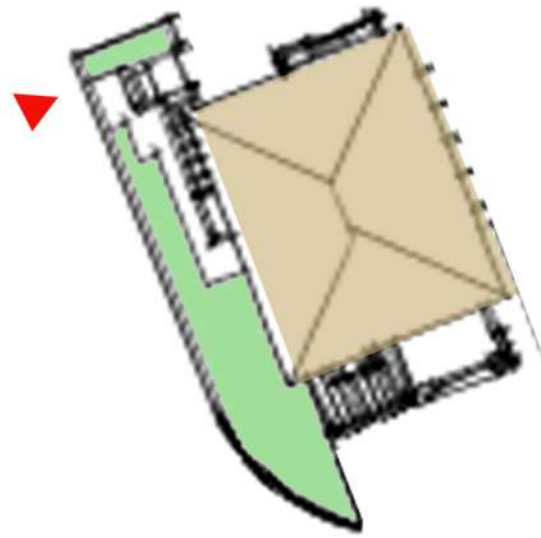
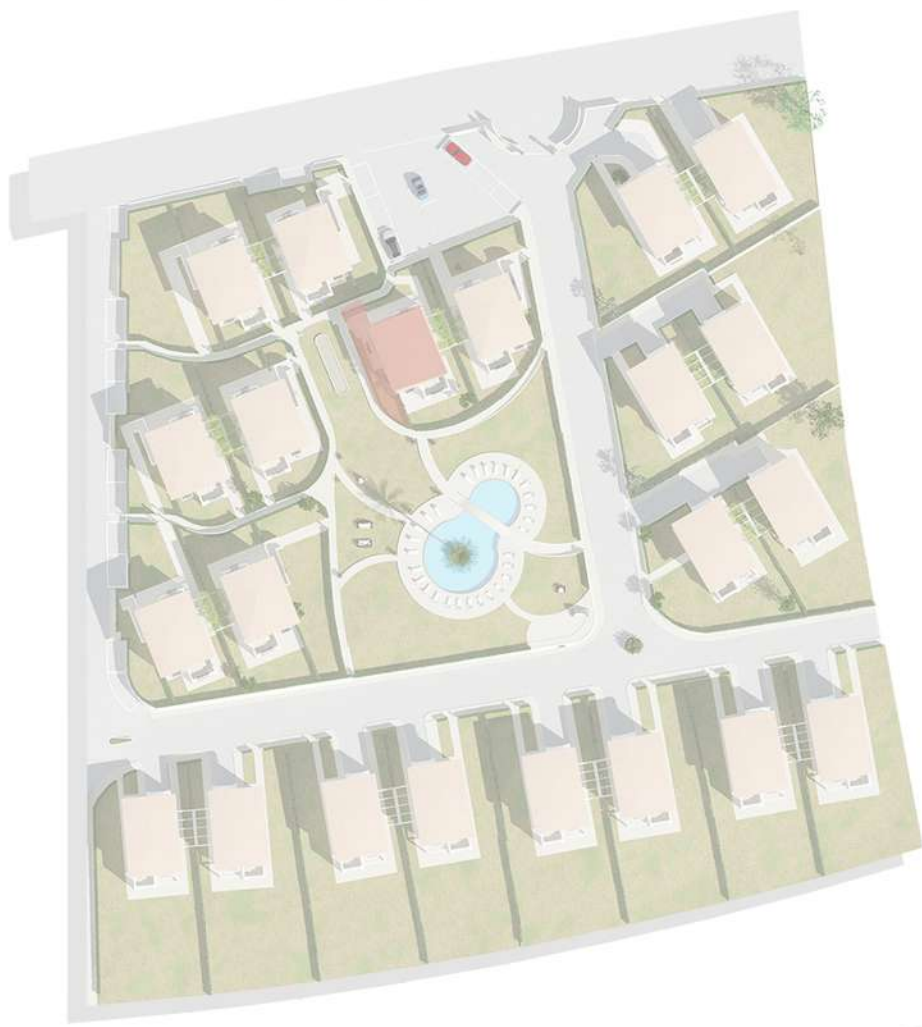
GROUND FLOOR



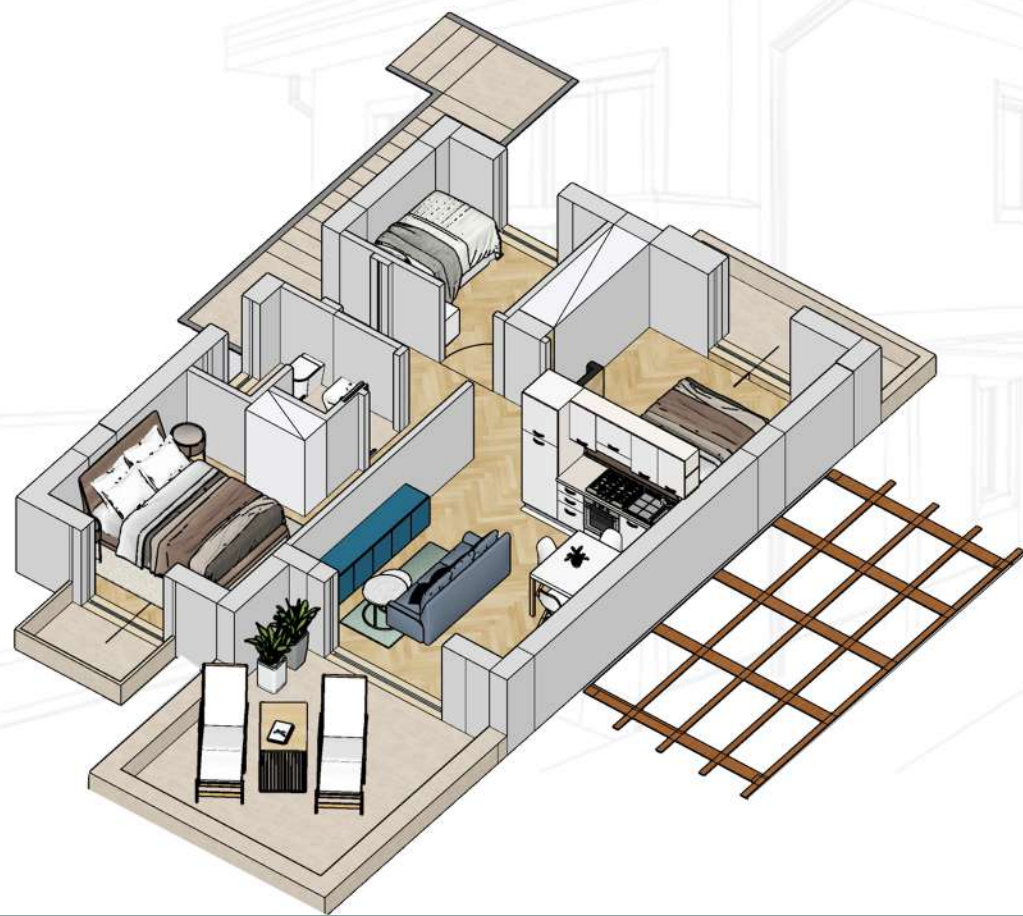
INTERNAL MQ - 70,35 m ²	PERGOLA - 16,50 m ²
BALCONY - 6,95 m ²	GARDEN - 150 m ²
TERRACE - 15,65 m ²	PARK - CAR PORT
BED - 2\3	SEA VIEW - YES
BATH - 1	

TOTAL m² - 132,05 M²





FIRST FLOOR



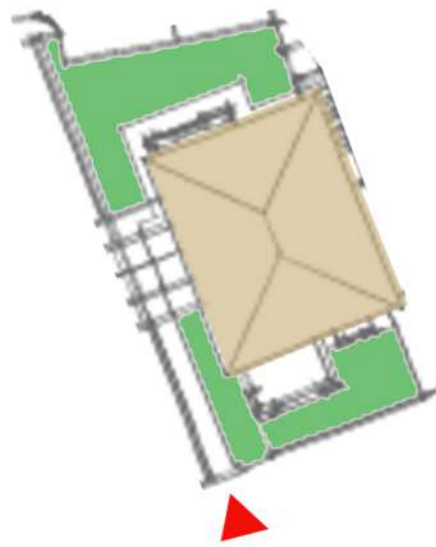
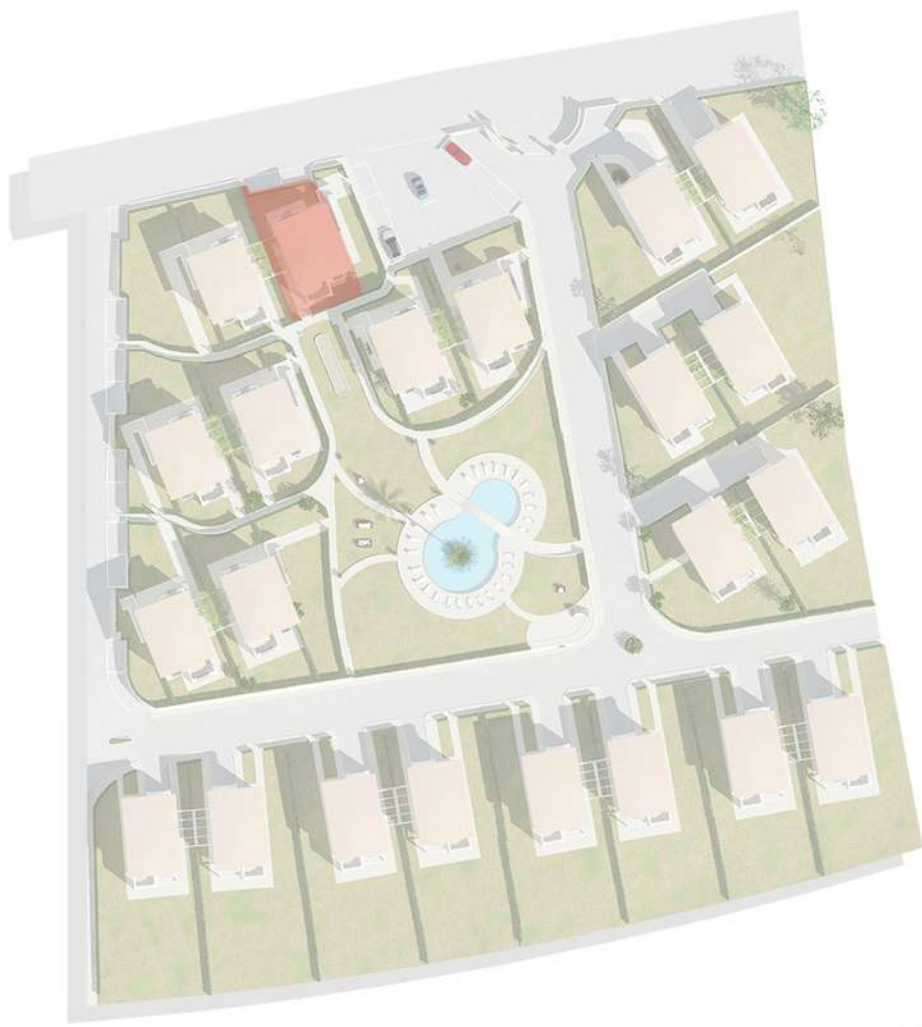
INTERNAL MQ - 60,05 m^q
 BALCONY - 6,95 m^q
 TERRACE - 15,65 m^q
 BED - 2\3
 BATH - 1

VERANDA - 15,65 m^q
 GARDEN - 65 m^q
 PARK - CAR PORT
 SEA VIEW - YES

TOTAL m^q - 98,30 MQ

FIRST FLOOR





GROUND FLOOR

GROUND FLOOR

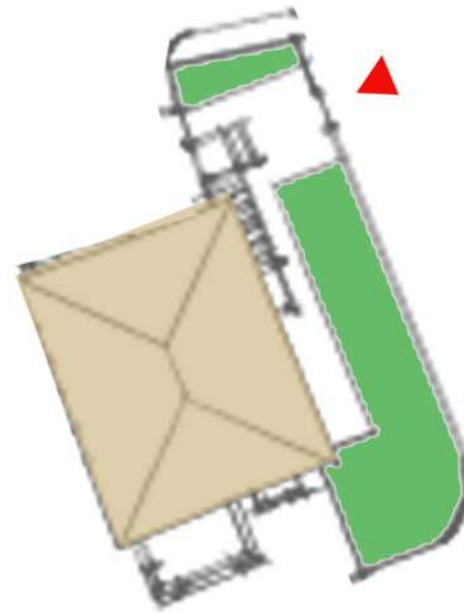
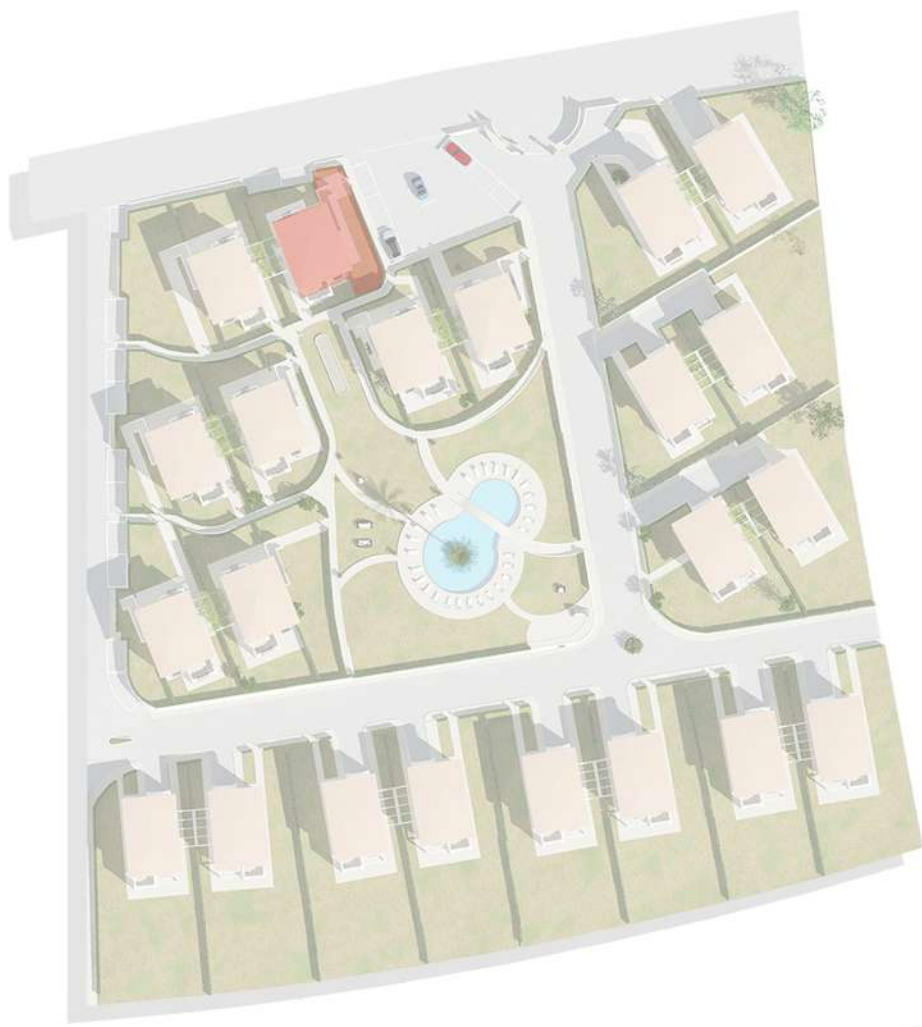


INTERNAL MQ - 70,35 m²
 BALCONY - 6,95 m²
 TERRACE - 15,65 m²
 BED - 2\3
 BATH - 1

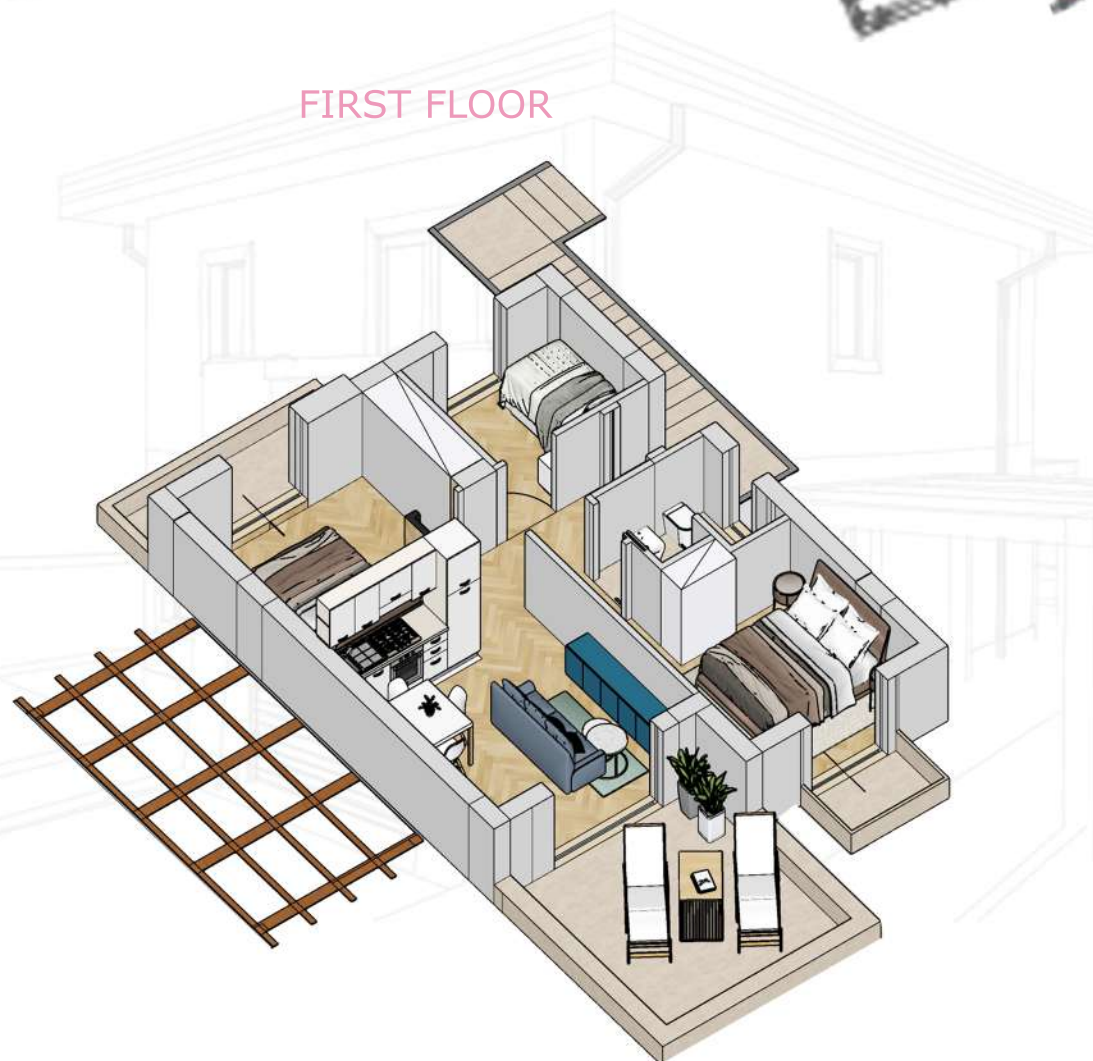
PERGOLA - 16,50 m²
 GARDEN - 120 m²
 PARK - CAR PORT
 SEA VIEW - YES

TOTAL m² - 132,05 M²





FIRST FLOOR



INTERNAL MQ - 60,05 mq	VERANDA - 15,65 mq
BALCONY - 6,95 mq	GARDEN - 100 mq
TERRACE - 15,65 mq	PARK - CAR PORT
BED - 2\3	SEA VIEW - YES
BATH - 1	

TOTAL mq - 98,30 MQ





GROUND FLOOR



GROUND FLOOR

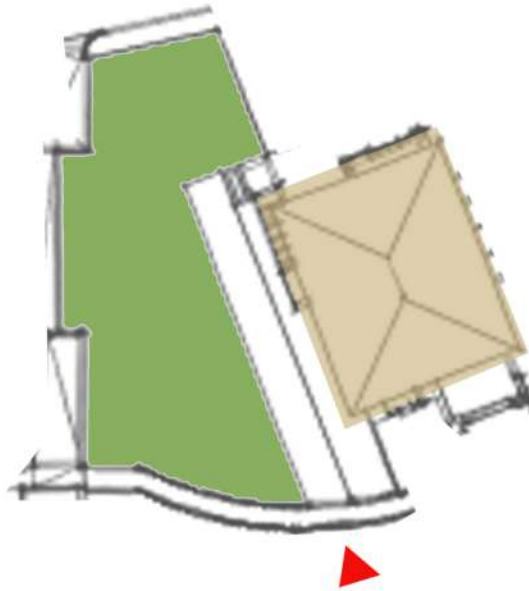


INTERNAL MQ - 70,35 mq
BALCONY - 6,95 mq
TERRACE - 15,65 mq
BED - 2\3
BATH - 1

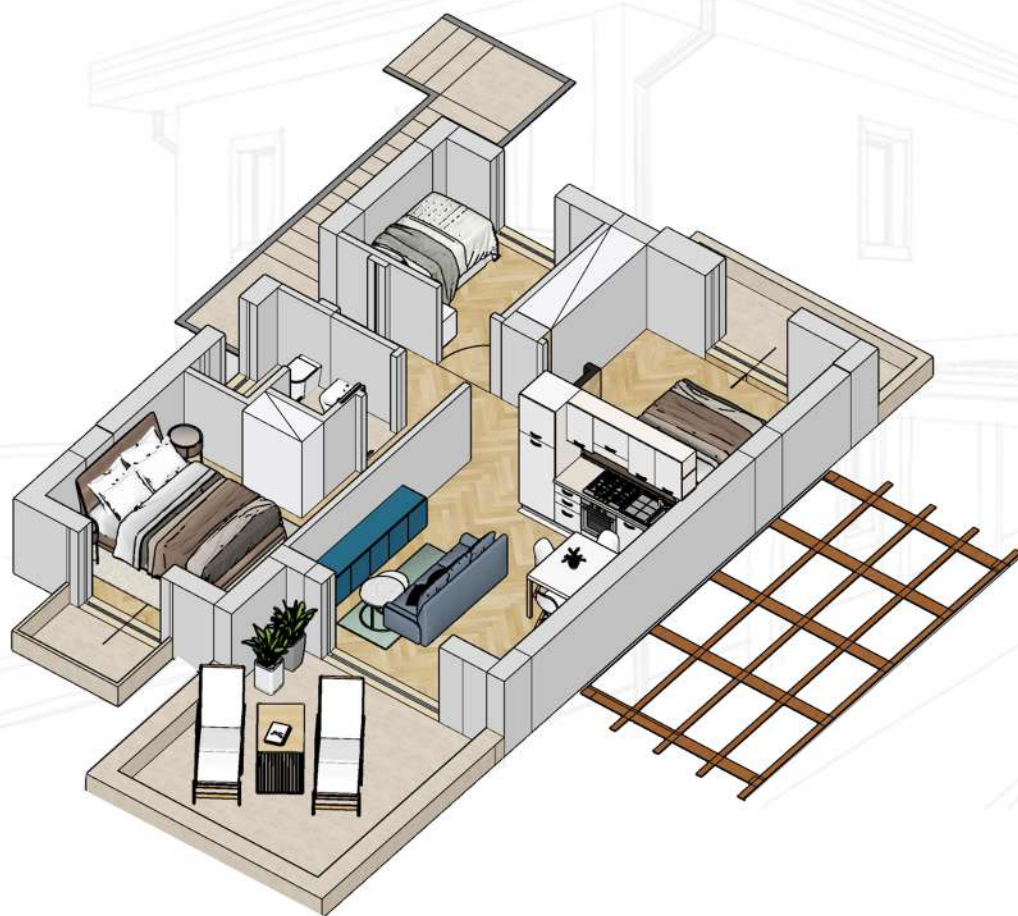
PERGOLA - 16,50 mq
GARDEN - 160 mq
PARK - CAR PORT
SEA VIEW - YES

TOTAL mq - 132,05 MQ





FIRST FLOOR



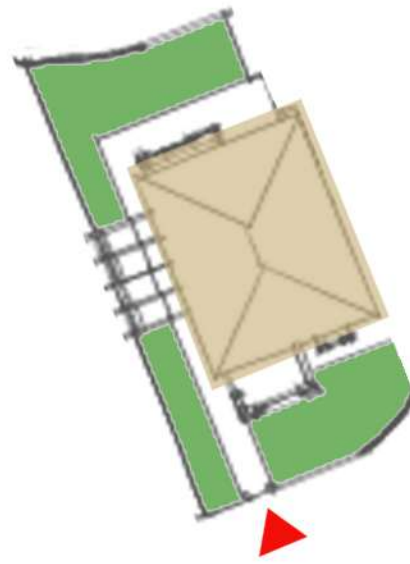
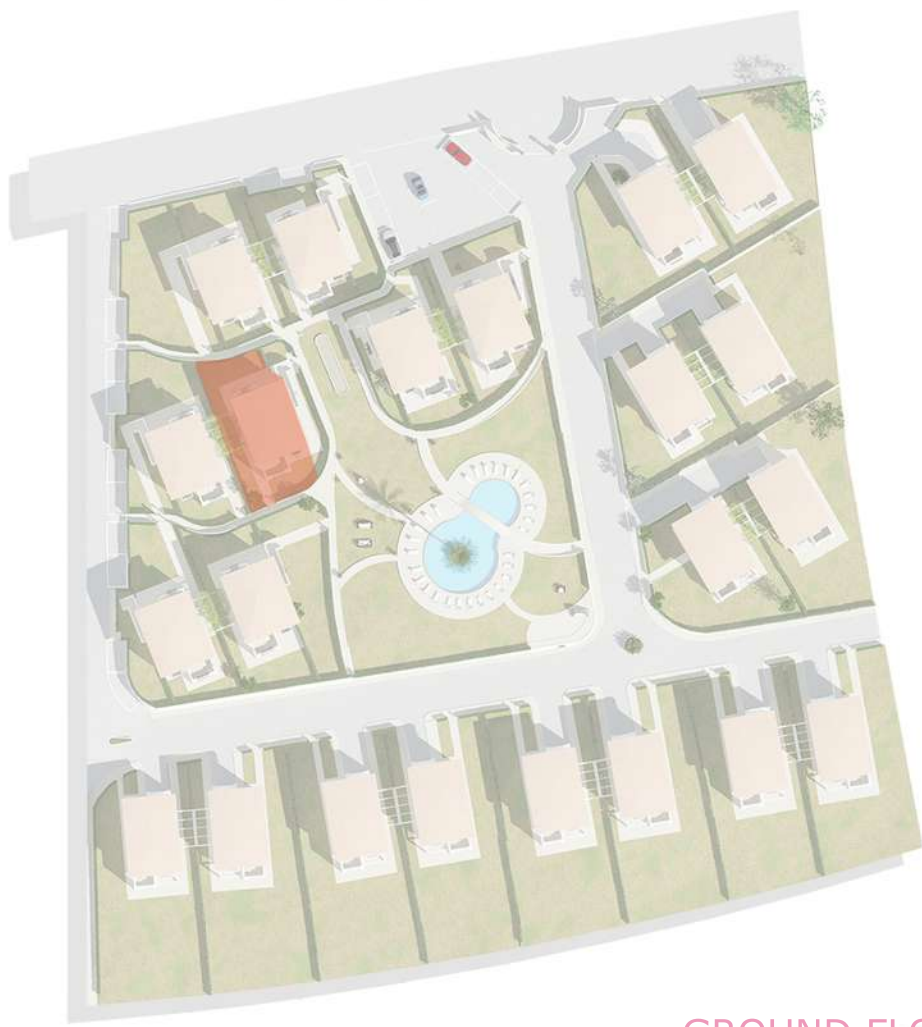
INTERNAL MQ - 60,05 mq
BALCONY - 6,95 mq
TERRACE - 15,65 mq
BED - 2\3
BATH - 1

VERANDA - 15,65 mq
GARDEN - 257 mq
PARK - CAR PORT
SEA VIEW - YES

TOTAL mq - 98,30 MQ

FIRST FLOOR





GROUND FLOOR



GROUND FLOOR



INTERNAL MQ - 70,35 mq

BALCONY - 6,95 mq

TERRACE - 15,65 mq

BED - 2\3

BATH - 1

PERGOLA - 16,50 mq

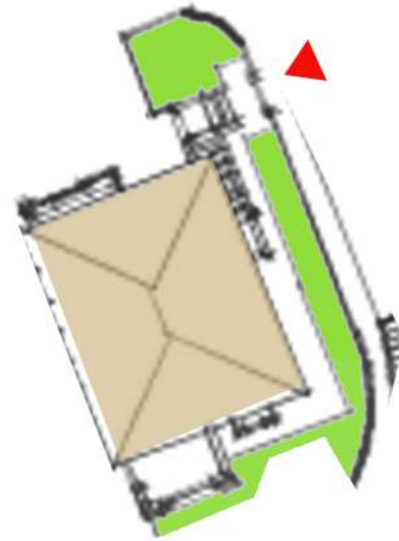
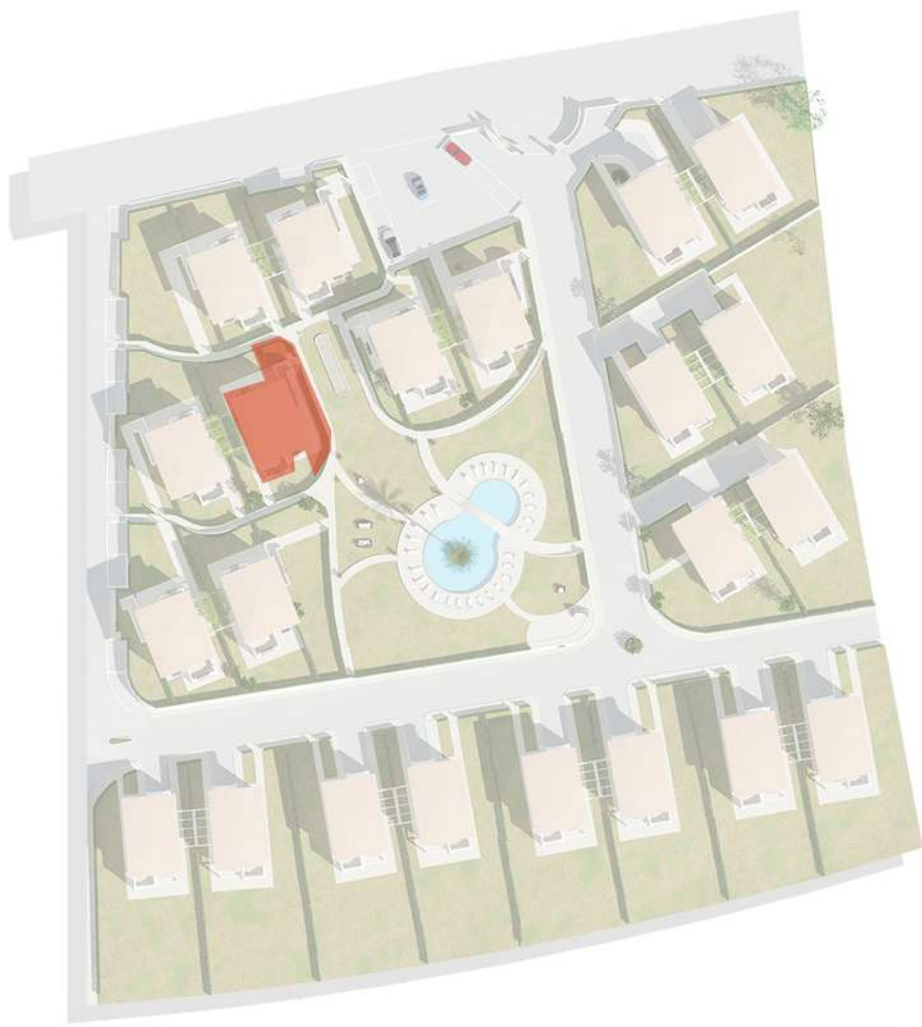
GARDEN - 157 mq

PARK - CAR PORT

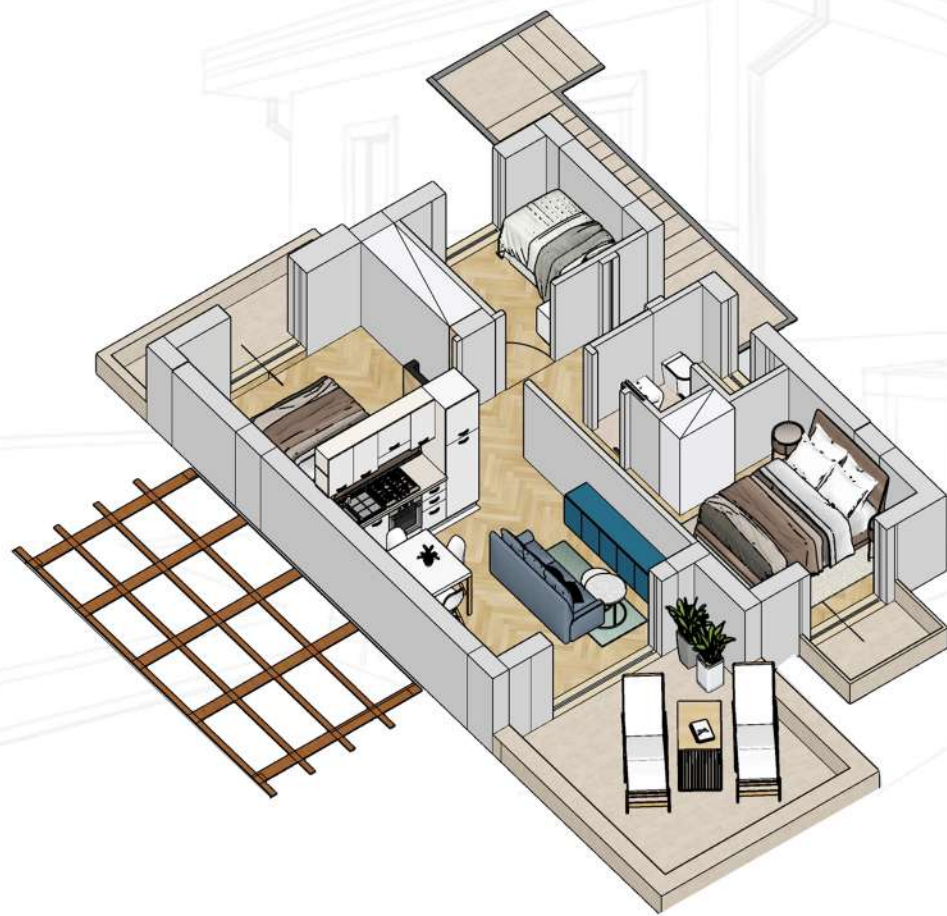
SEA VIEW - YES

TOTAL mq - 132,05 MQ





FIRST FLOOR



FIRST FLOOR

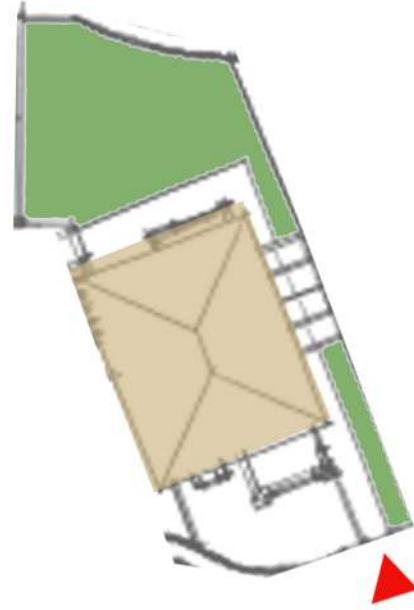


INTERNAL MQ - 60,05 m^q
BALCONY - 6,95 m^q
TERRACE - 15,65 m^q
BED - 2\3
BATH - 1

VERANDA - 15,65 m^q
GARDEN - 90 m^q
PARK - CAR PORT
SEA VIEW - YES

TOTAL m^q - 98,30 MQ





GROUND FLOOR



GROUND FLOOR

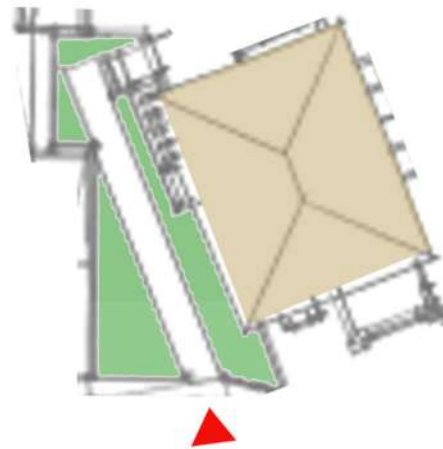
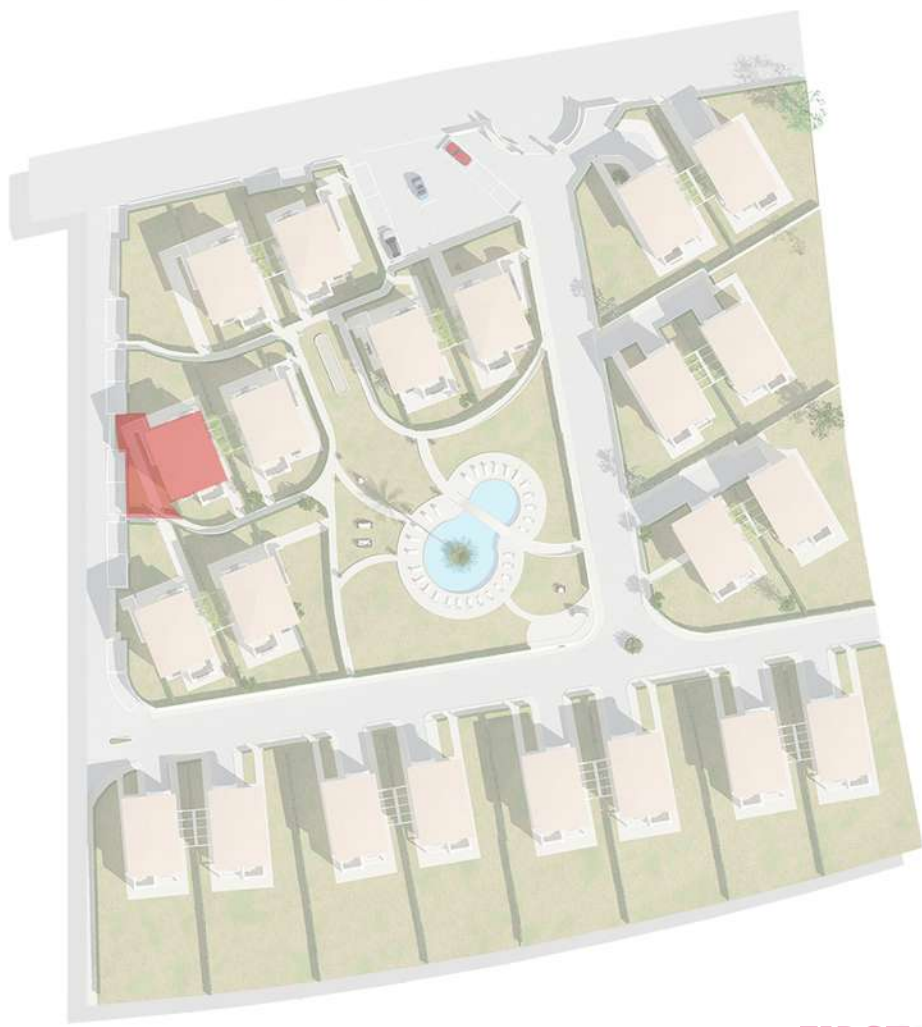


INTERNAL MQ - 70,35 m²
BALCONY - 6,95 m²
TERRACE - 15,65 m²
BED - 2\3
BATH - 1

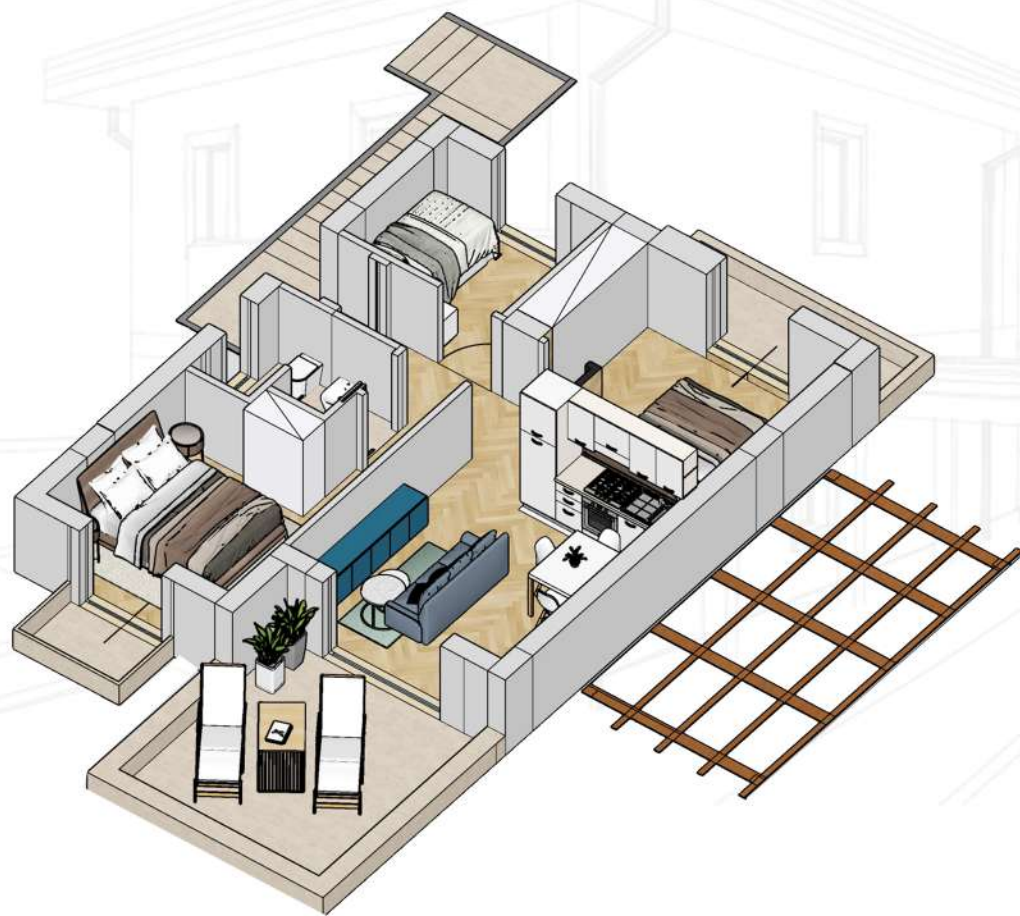
PERGOLA - 16,50 m²
GARDEN - 225 m²
PARK - CAR PORT
SEA VIEW - YES

TOTAL m² - 132,05 M²





FIRST FLOOR



FIRST FLOOR

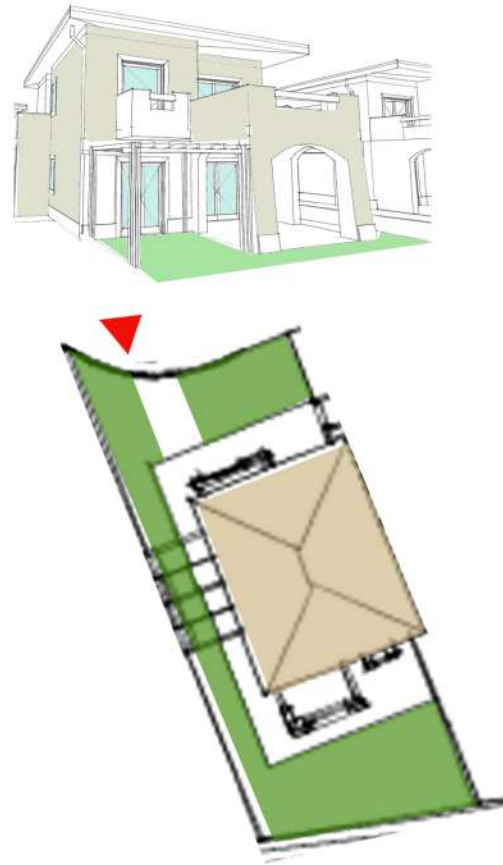
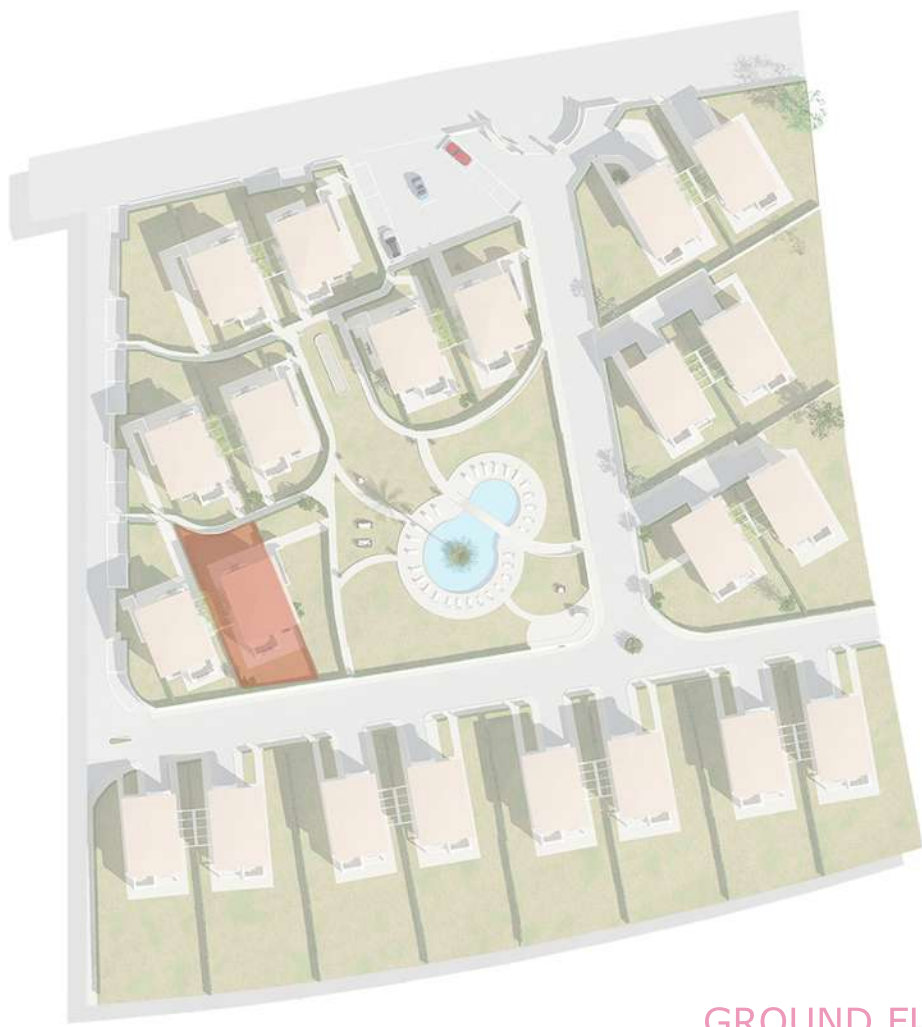


INTERNAL MQ - 60,05 mq
BALCONY - 6,95 mq
TERRACE - 15,65 mq
BED - 2\3
BATH - 1

VERANDA - 15,65 mq
GARDEN - 97 mq
PARK - CAR PORT
SEA VIEW - YES

TOTAL mq - 98,30 MQ





GROUND FLOOR

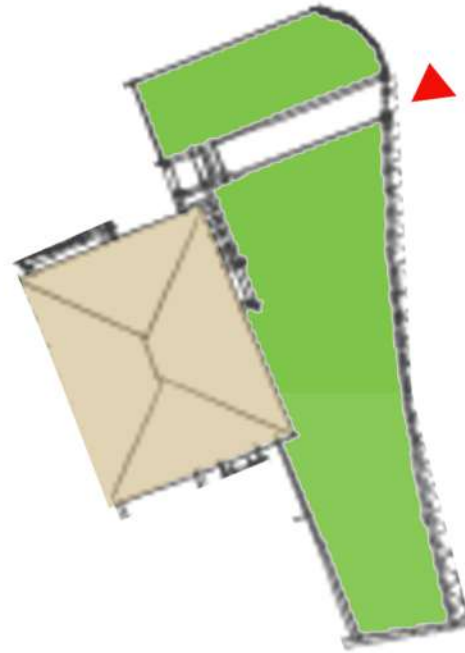
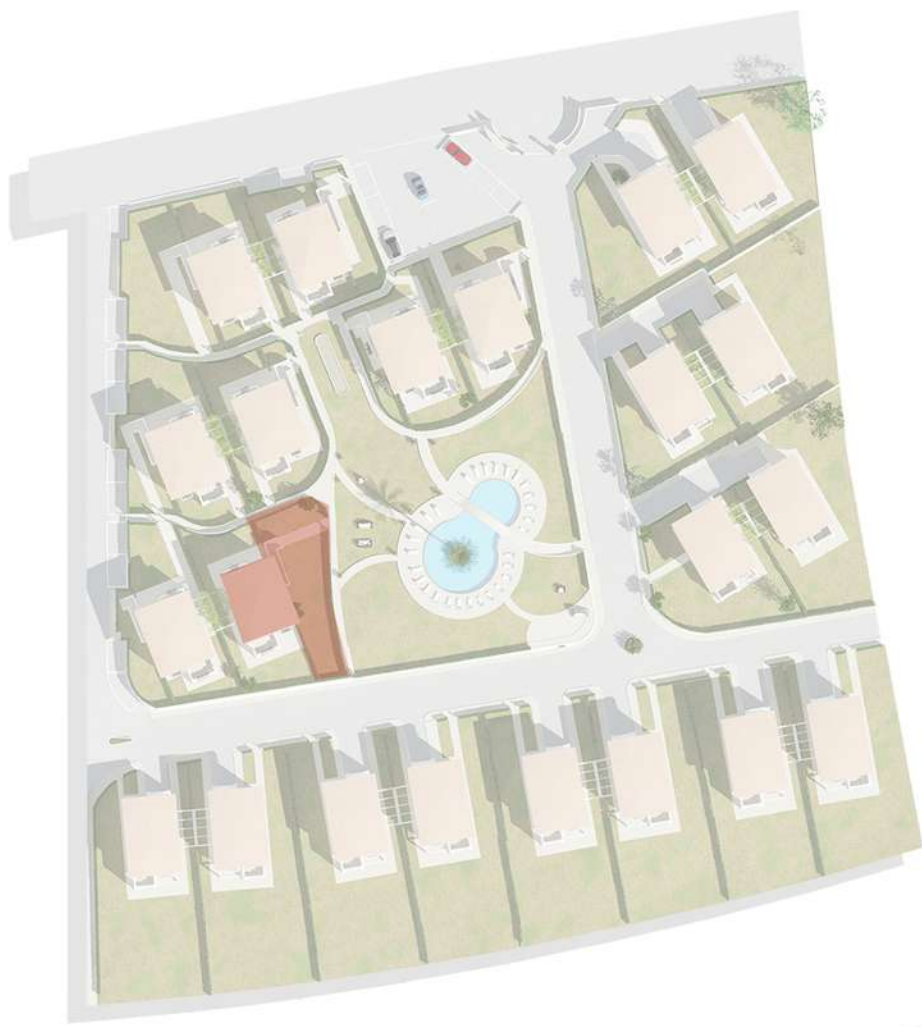


INTERNAL MQ - 70,35 m²
 BALCONY - 6,95 m²
 TERRACE - 15,65 m²
 BED - 2\3
 BATH - 1

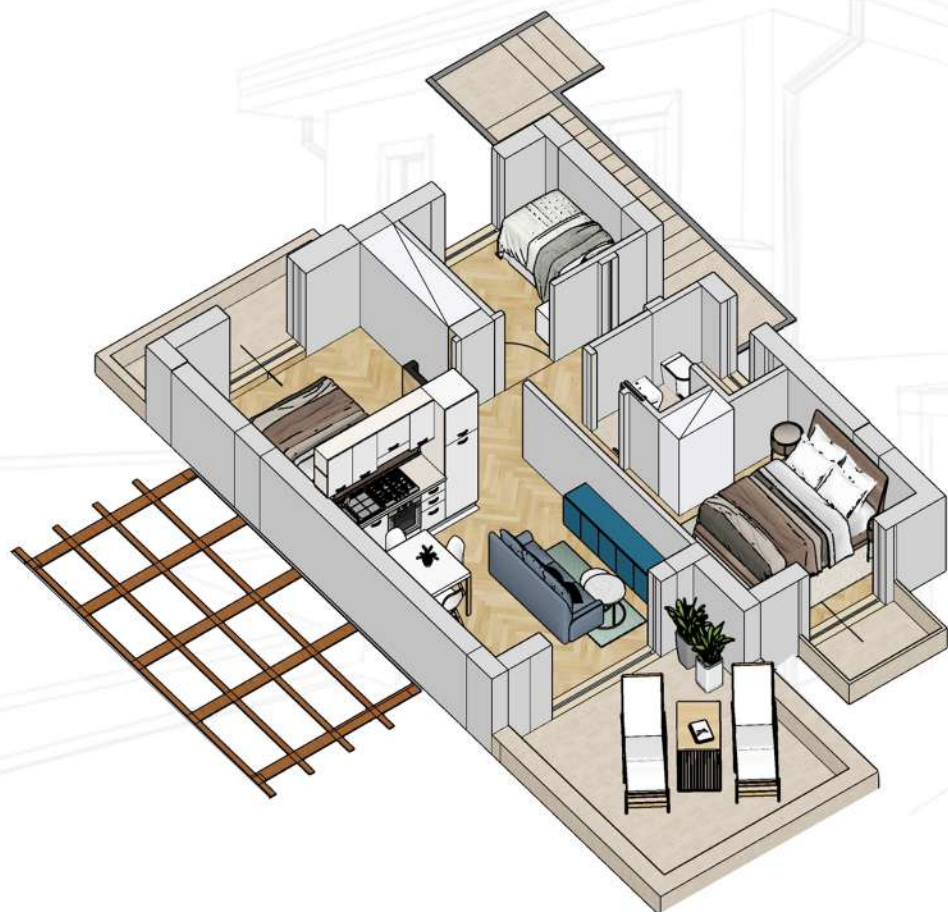
PERGOLA - 16,50 m²
 GARDEN - 191 m²
 PARK - CAR PORT
 SEA VIEW - YES

TOTAL m² - 132,05 M²





FIRST FLOOR



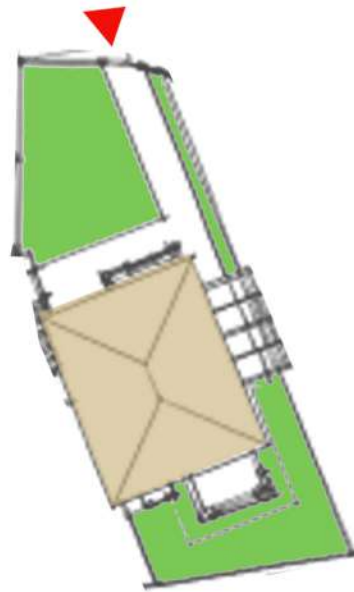
FIRST FLOOR



INTERNAL MQ - 60,05 mq	VERANDA - 15,65 mq
BALCONY - 6,95 mq	GARDEN - 222 mq
TERRACE - 15,65 mq	PARK - CAR PORT
BED - 2\3	SEA VIEW - YES
BATH - 1	

TOTAL mq - 98,30 MQ





GROUND FLOOR



GROUND FLOOR

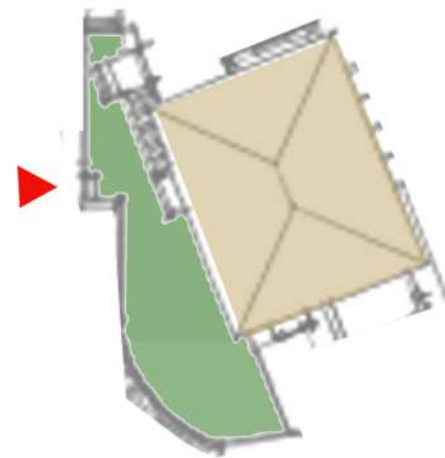


INTERNAL MQ - 70,35 mq
BALCONY - 6,95 mq
TERRACE - 15,65 mq
BED - 2\3
BATH - 1

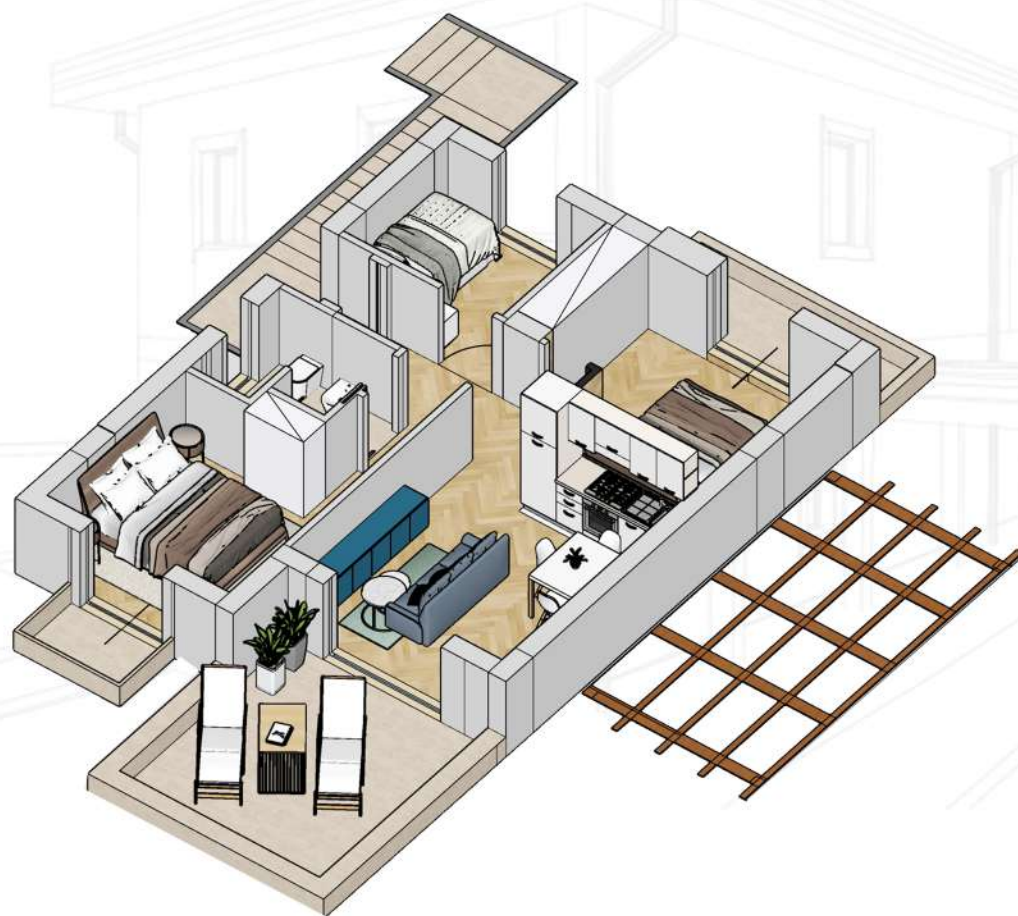
PERGOLA - 16,50 mq
GARDEN - 225 mq
PARK - CAR PORT
SEA VIEW - YES

TOTAL mq - 132,05 MQ





FIRST FLOOR



INTERNAL MQ - 60,05 mq
 BALCONY - 6,95 mq
 TERRACE - 15,65 mq
 BED - 2\3
 BATH - 1

VERANDA - 15,65 mq
 GARDEN - 97 mq
 PARK - CAR PORT
 SEA VIEW - YES

TOTAL mq - 98,30 MQ

FIRST FLOOR

