



# Top 07

Maisonette  
Hochparterre, Souterrain  
mit Terrasse

NFL 85,27 m<sup>2</sup>  
Terrasse 29,28 m<sup>2</sup>

Bauherr:  
**Ertugrul Özalp**  
Leitgebasse 7/26  
A-1050 Wien

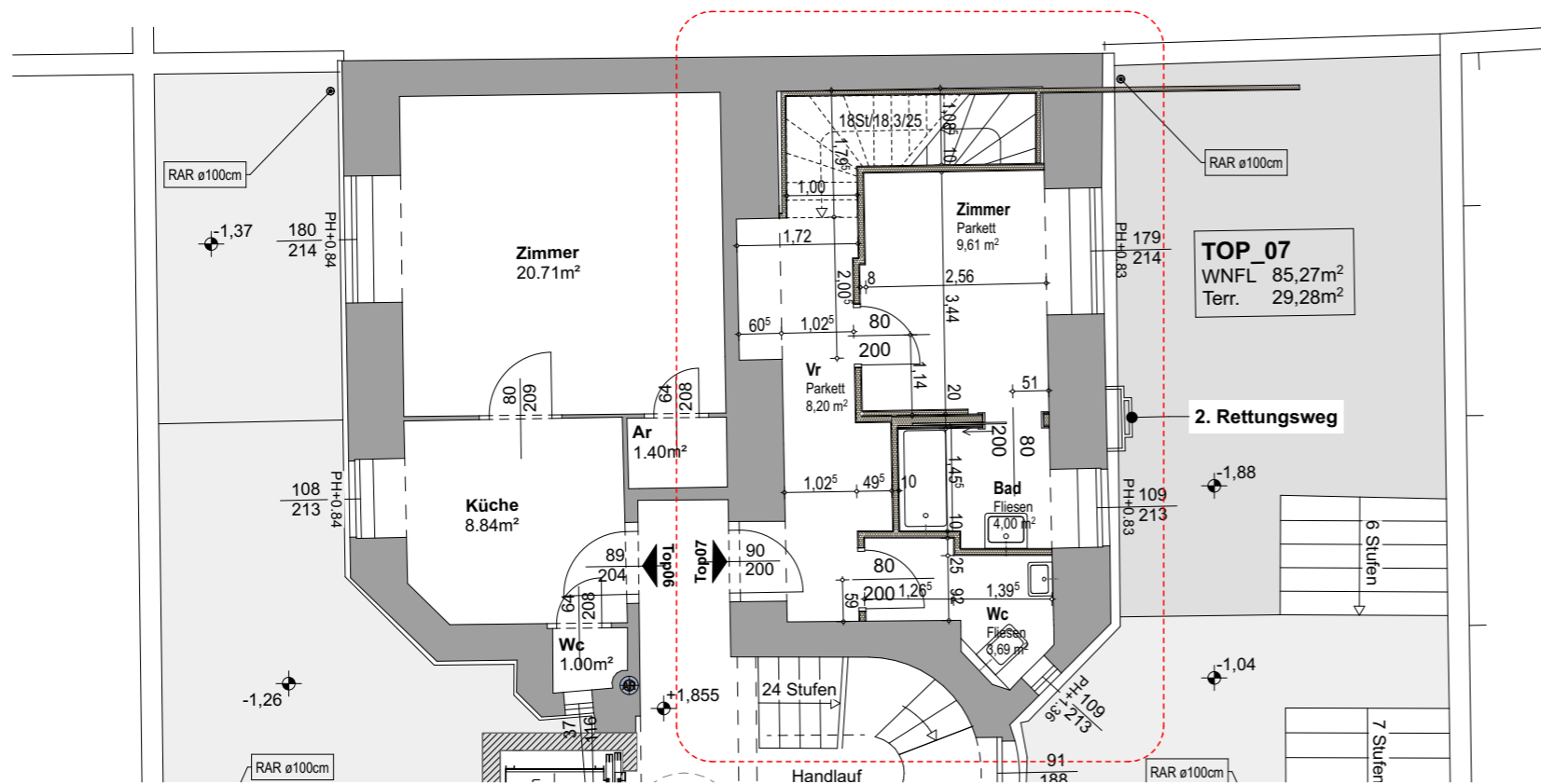
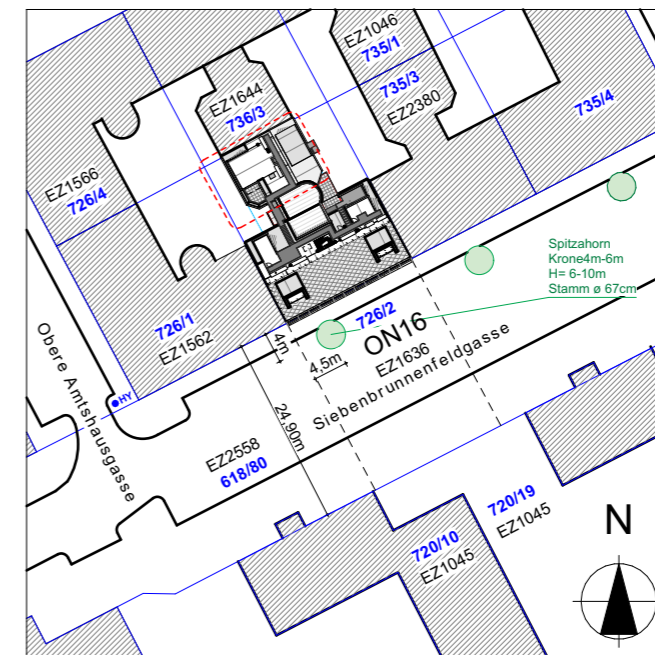
Datum:  
**28. Oktober 2021**

## FLÄCHENAUFSTELLUNG

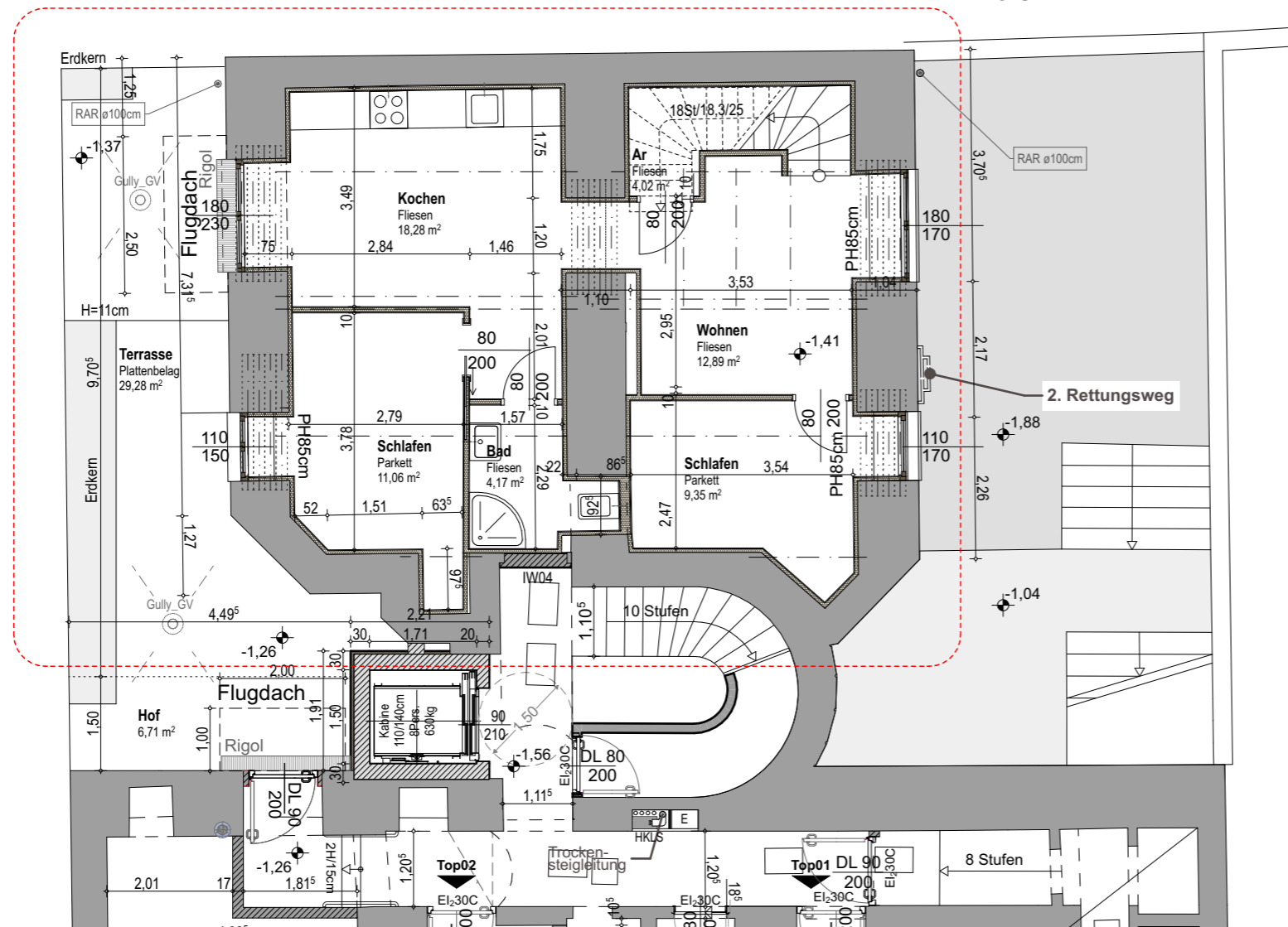
Geschoß	Raum	NFL
Souterrain	Kochen	18,28 m <sup>2</sup>
Souterrain	Schlafen	11,06 m <sup>2</sup>
Souterrain	Bad	4,17 m <sup>2</sup>
Souterrain	Schlafen	9,35 m <sup>2</sup>
Souterrain	Wohnen	12,89 m <sup>2</sup>
Souterrain	Ar	4,02 m <sup>2</sup>
Hochparterre	Vr	8,20 m <sup>2</sup>
Hochparterre	Zimmer	9,61 m <sup>2</sup>
Hochparterre	Bad	4,00 m <sup>2</sup>
Hochparterre	Wc	3,69 m <sup>2</sup>
		<b>85,27 m<sup>2</sup></b>
Souterrain	Terrasse	29,28 m <sup>2</sup>

## LAGEPLAN

M=1:1000



## HOCHPARTERRE



## SOUTERRAIN