

**ALTENSITTENBACHER STR.**

ca. 22,5 m

(offene)  
Doppel  
Garage

8,30 m

74,70 m<sup>2</sup>

8,30 m

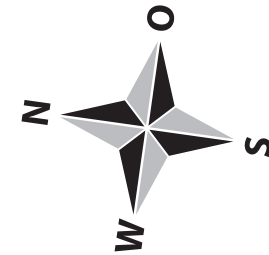
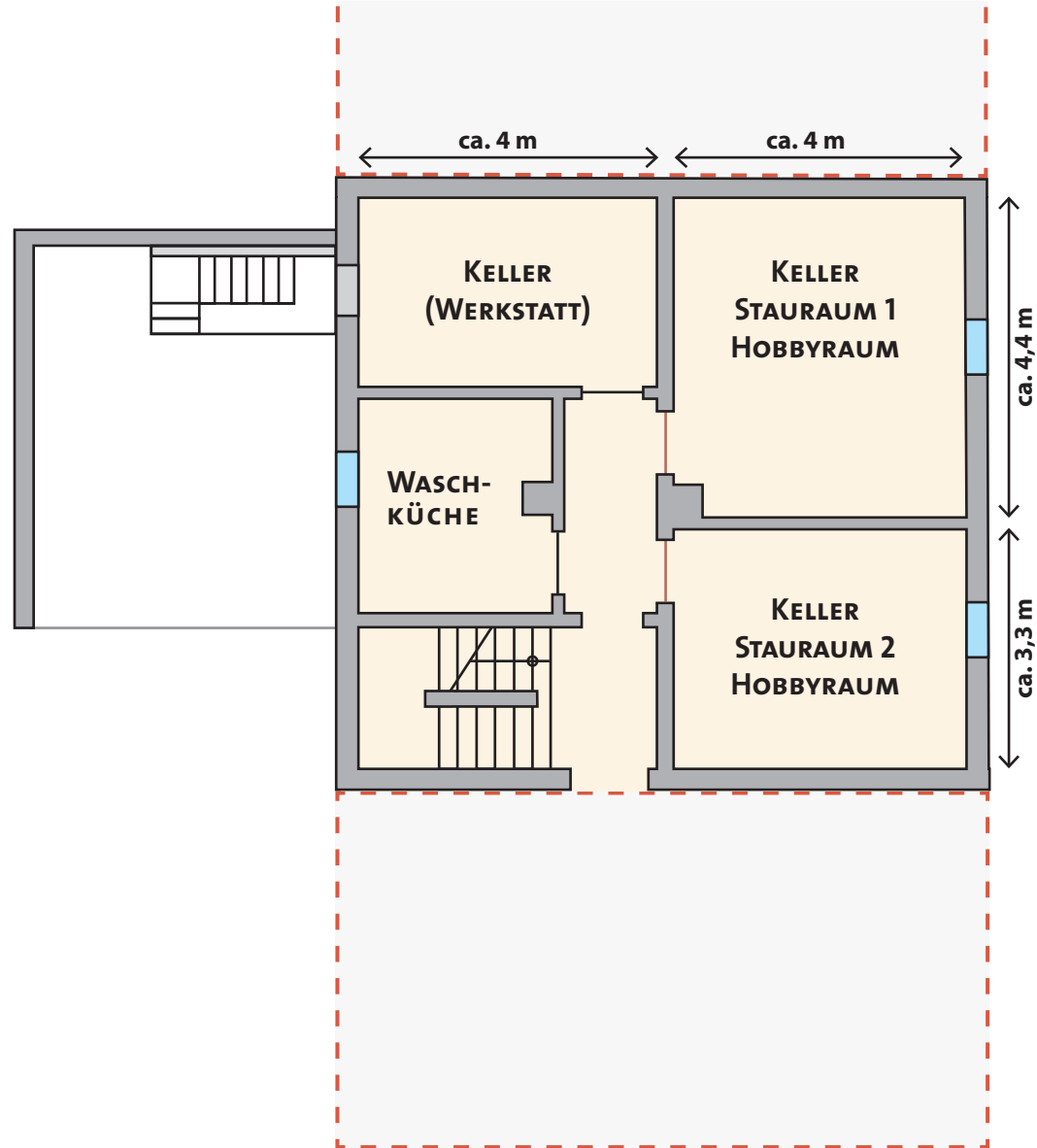
ca. 9 m

ca. 5 m

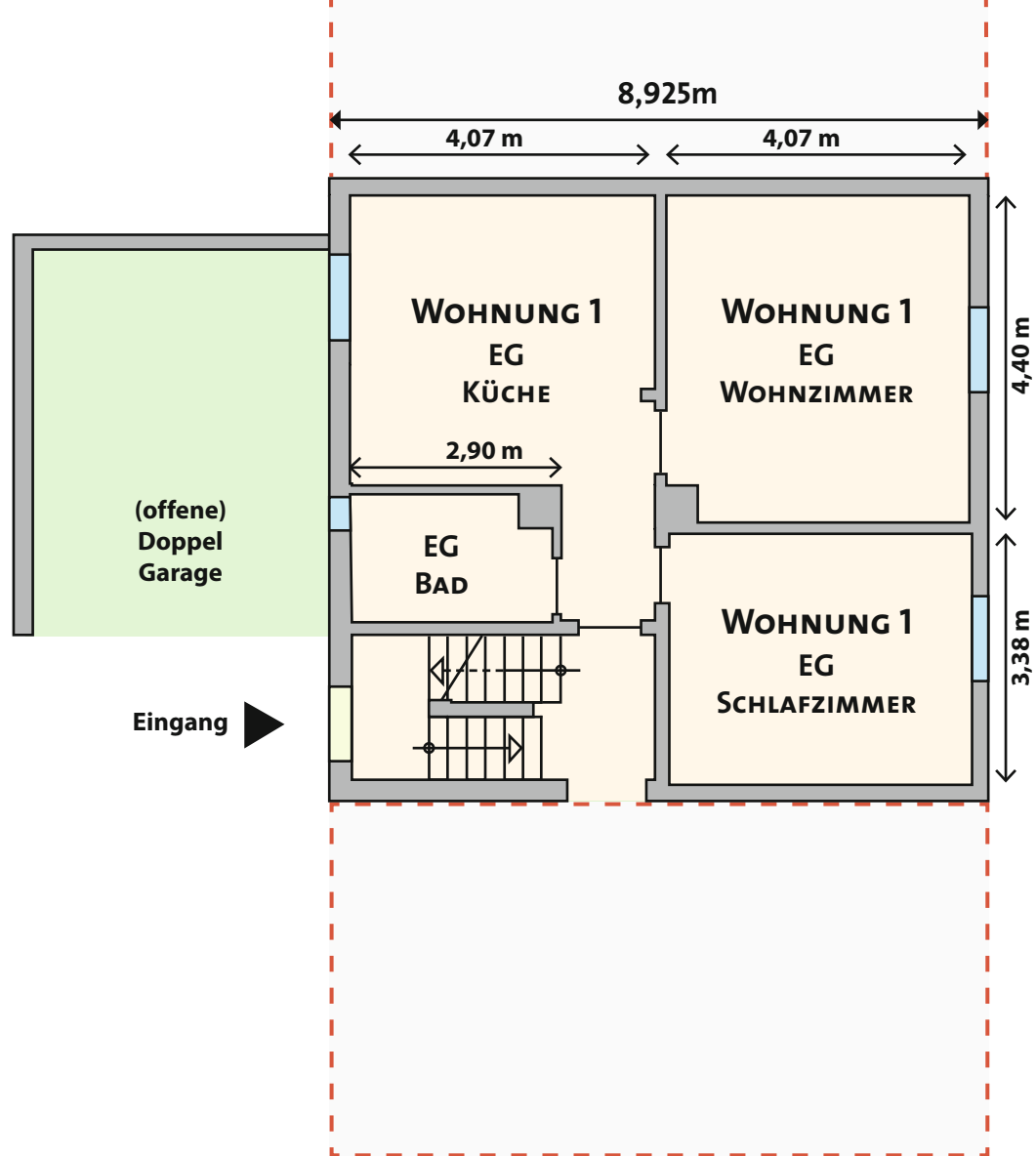
ca. 9 m

ca. 3,5 m

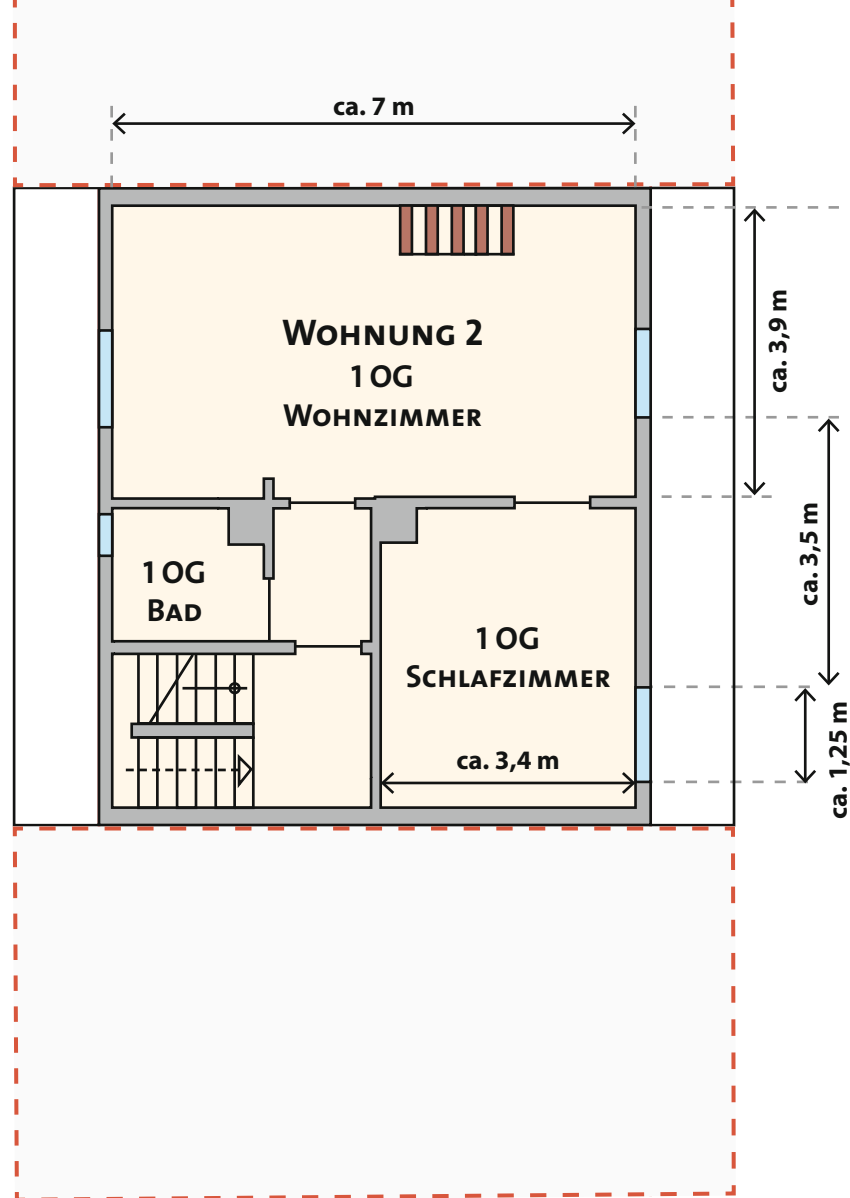
Stellplatz 3



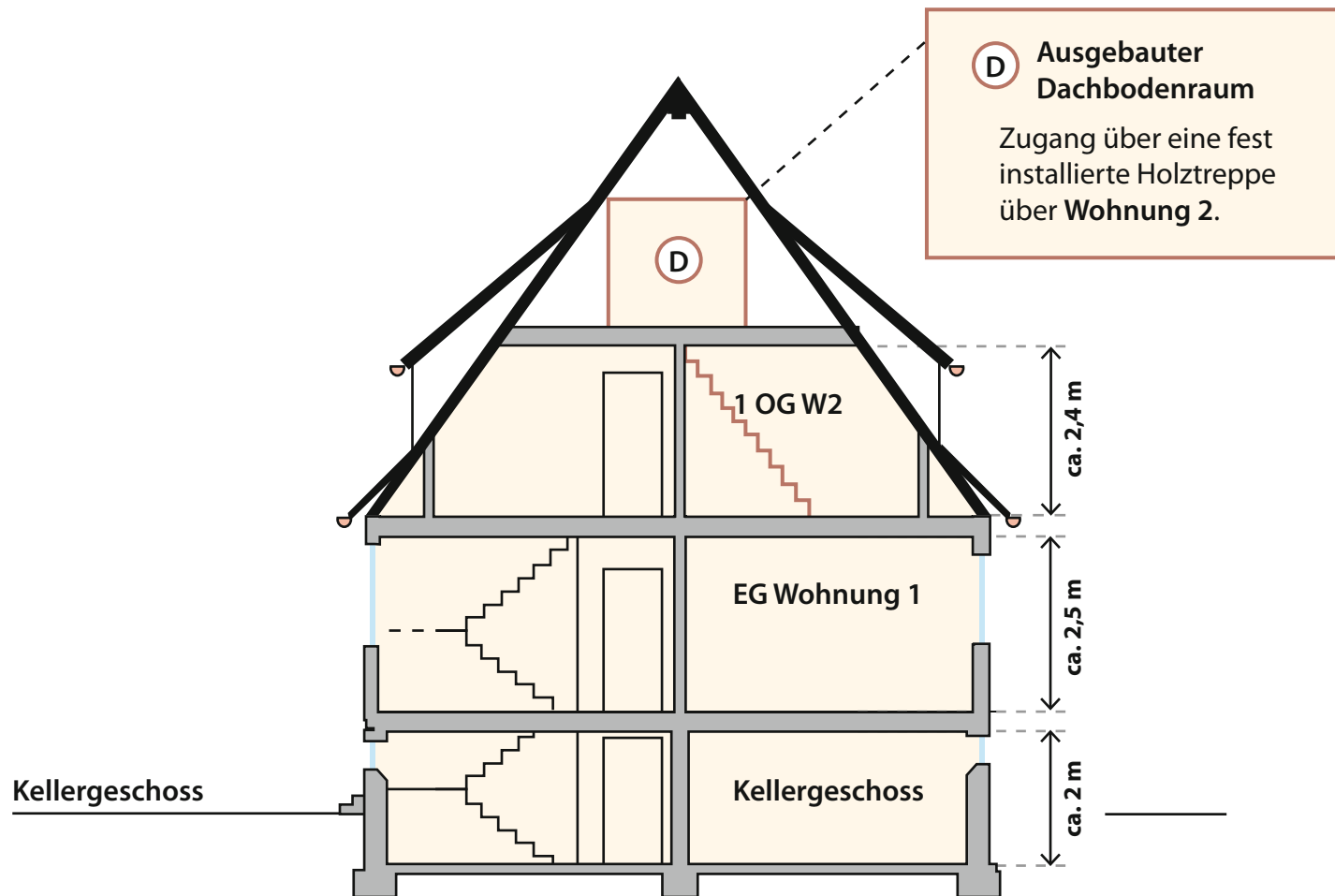
**KELLERGECHOSS**



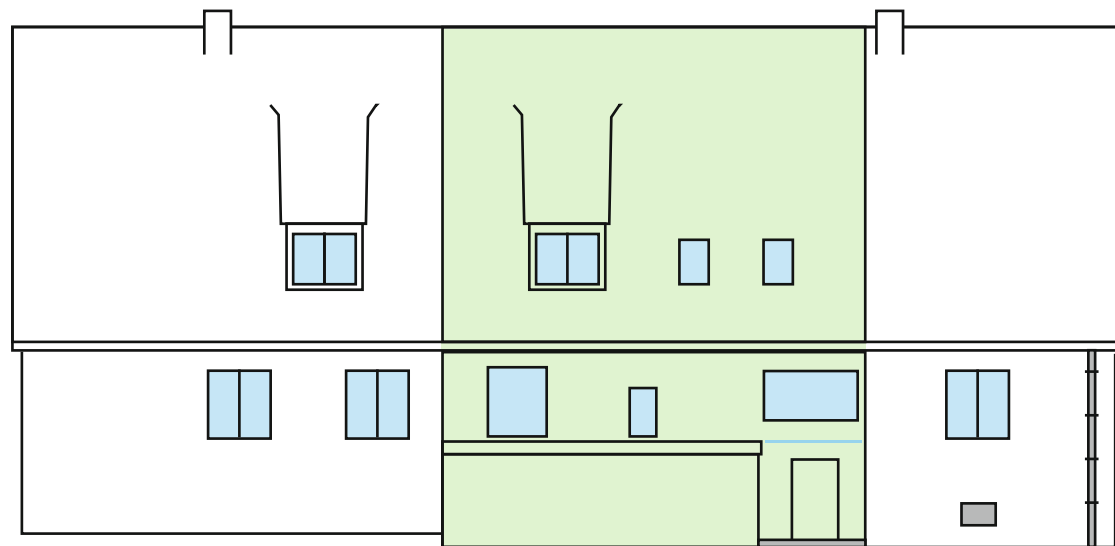
## ERDGESCHOSS



## DACHGESCHOSS



**QUERSCHNITT**



**NORDANSICHT**