

FLOOR 1 _ BEDROOMS

Floor 1 rises in perfect balance. It faces entirely the exterior through a perimeter corridor that gives a high permeability to all rooms at night without reducing the privacy of these spaces. It is designed in smooth monolayer with warm tones. The covering elements are present on both levels through the conformation of different protection pergolas as in the mobile shutters.

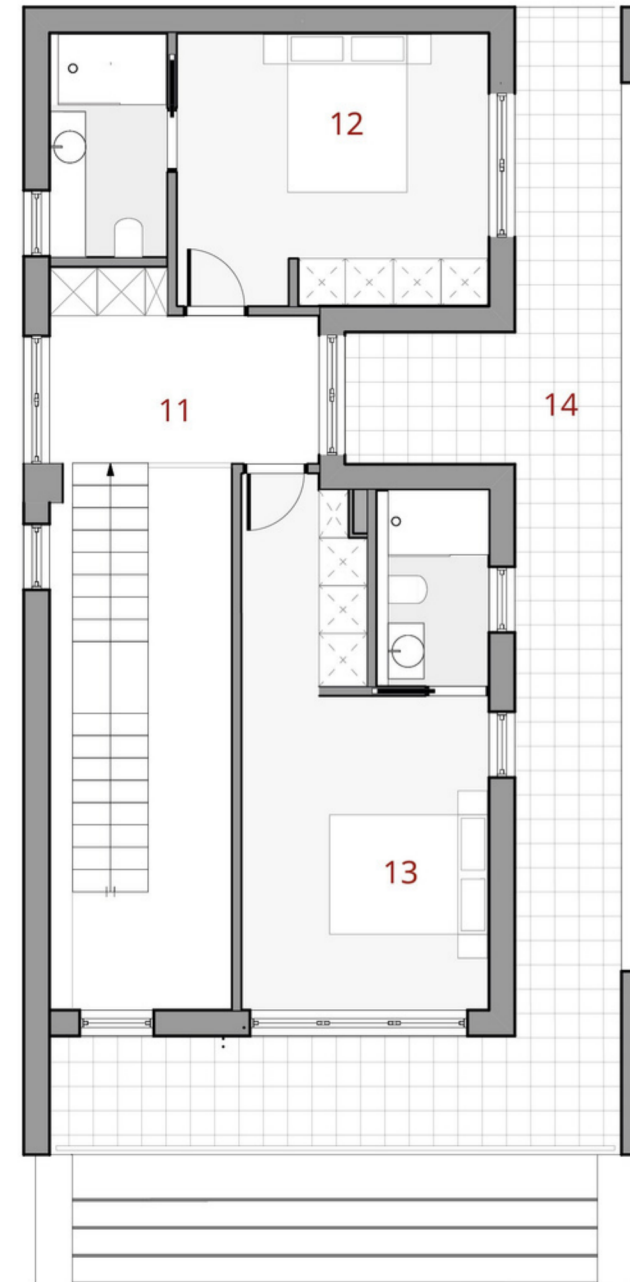
It has its access from the exterior through the terrace or inside through the metal staircase. It is distributed in two en-suite bedrooms with a complete bathroom on each and a semi-independent area with wardrobes

The floor inside the Villa has a large-format porcelain in beige tone cladding, with minimal joints, and white baseboards. All walls and ceilings are in a light colour paint with stucco effect.

TABLE OF USEFUL SURFACES

11 Hall.....	7,63 m ²
12 Suite bedroom.....	17,76 m ²
13 Suite bedroom.....	20,57 m ²
14 Terrace.....	32,72 m ²

1st Floor USABLE AREA	51,07 m²
1st Floor TERRACE SURFACE	32,72 m²



FIRST FLOOR HOUSE BUILT SURFACE
(TERRACES ARE NOT INCLUDED)

57,63 m²

FLOOR 0 _ LIVING ROOM

The villa will have electrical outlets and telecommunications required by regulation. Main ones, such as internet and TV/FM, are installed in the living room. There are also power outlets on terraces and exterior corridors.

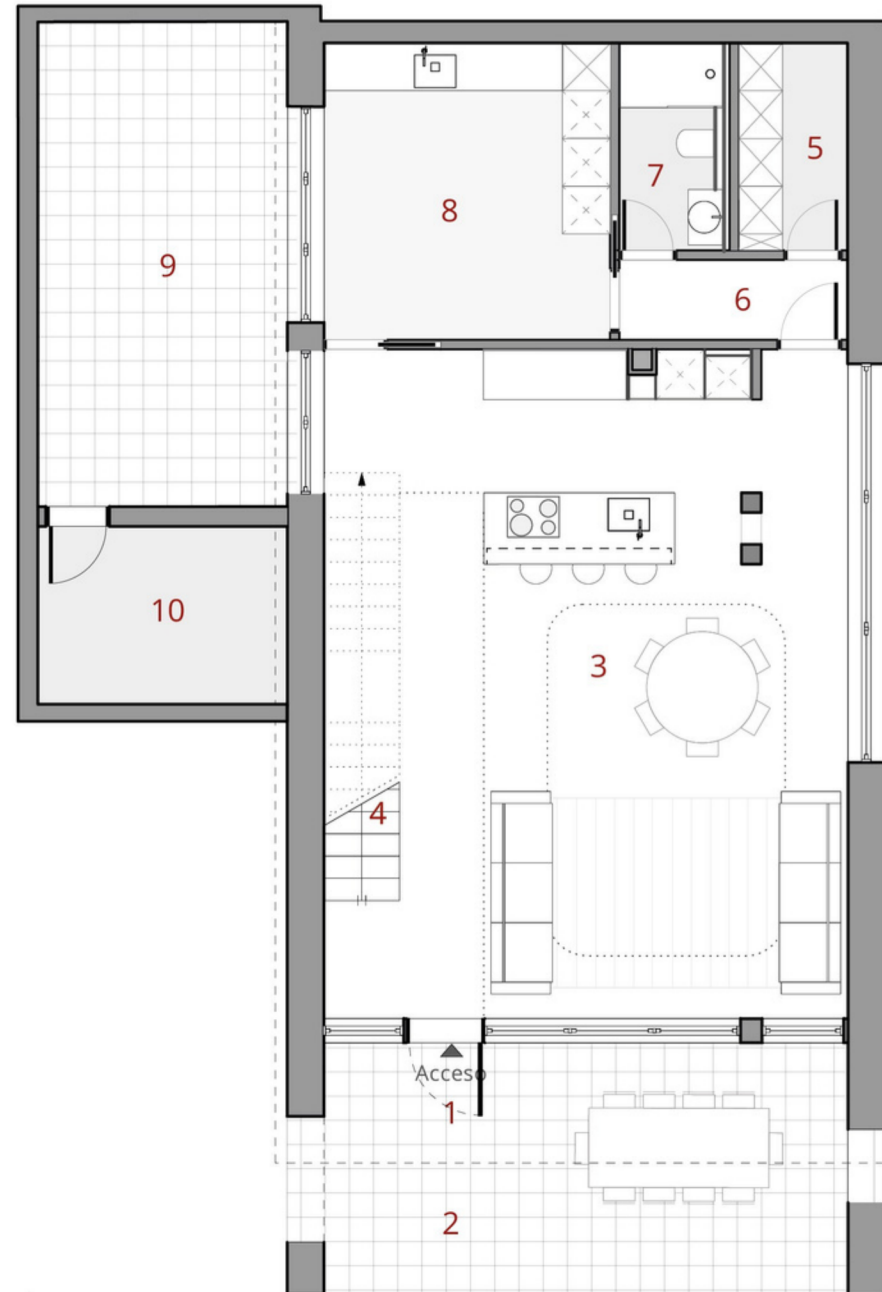
Light spots will be in the false ceiling with LED technology lights. Exterior lighting will be supplied by walls or ceiling lights with a LED module.

The ventilation system is carried out through a system of ducts with extraction and drive grilles that will guarantee the quality and healthiness of the indoor air.

TABLE OF USEFUL SURFACES

01 Covered porch (50%).....	10,60 m ²
02 Open porch.....	10,89 m ²
03 Living-dining room-kitchen.....	54,85 m ²
04 Staircase in Ground Floor.....	5,11 m ²
05 Pantry.....	3,60 m ²
06 Hall.....	3,09 m ²
07 Bathroom.....	3,05 m ²
08 Laundry room.....	14,19 m ²
09 Interior patio.....	20,43 m ²
10 Facilities area.....	7,73 m ²

Ground Floor USABLE AREA	92,07 m²
Ground Floor TERRACE SURFACE	41,92 m²



GROUND FLOOR HOUSE BUILT SURFACE
(TERRACES ARE NOT INCLUDED)

108,10 m²