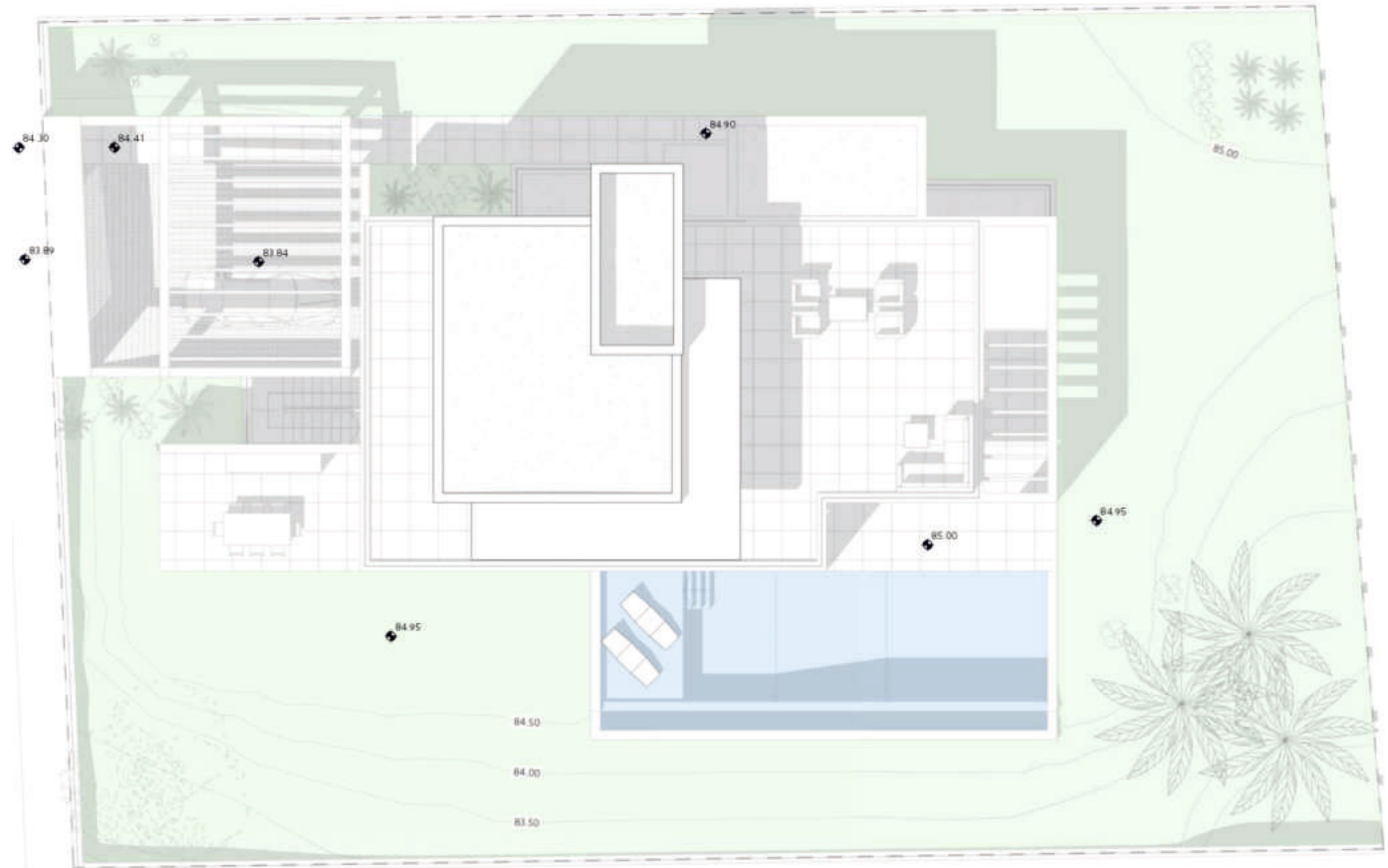


GENERAL VIEW

METRES

Plot	————	1079,34 m ²
Parking	————	42,03 m ²
Pool	————	57,61 m ²
Dwelling	————	452,69 m ²

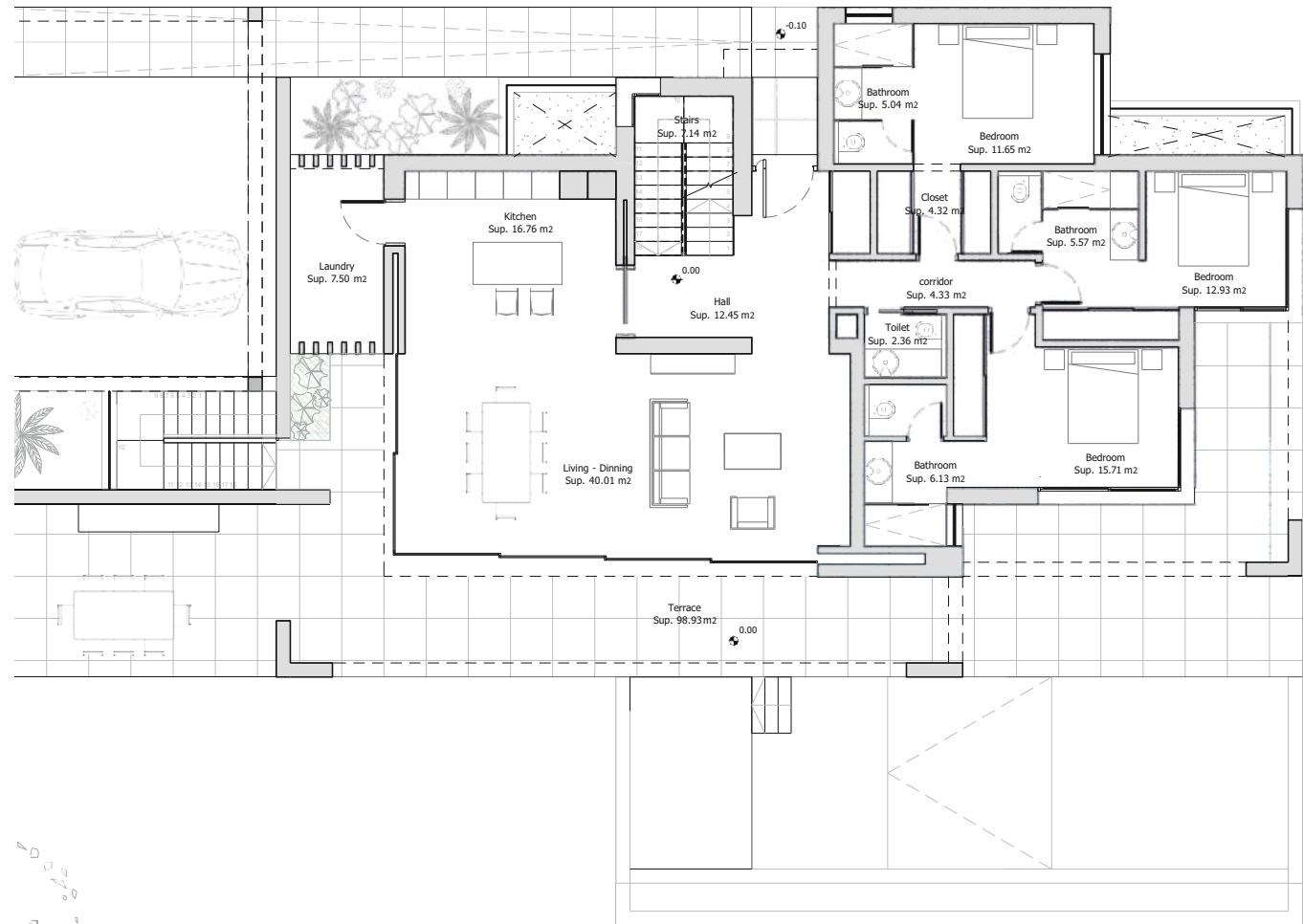


During the development of the project, the Management reserves the right to make the necessary changes, due to legal, administrative, technical, commercial or supply requirements, in distributions, dimensions and surfaces. In no case these changes will imply a modification of the stipulated purchase price. The furniture and any decorative elements that appear on the plans are simply a recreation for orientative and non-binding purposes, in no case are they included in the purchase price of the villa.

GROUND FLOOR

METRES

Terrace	————	98,93 m ²
Useful	————	151,90m ²
Built	————	177,33m ²

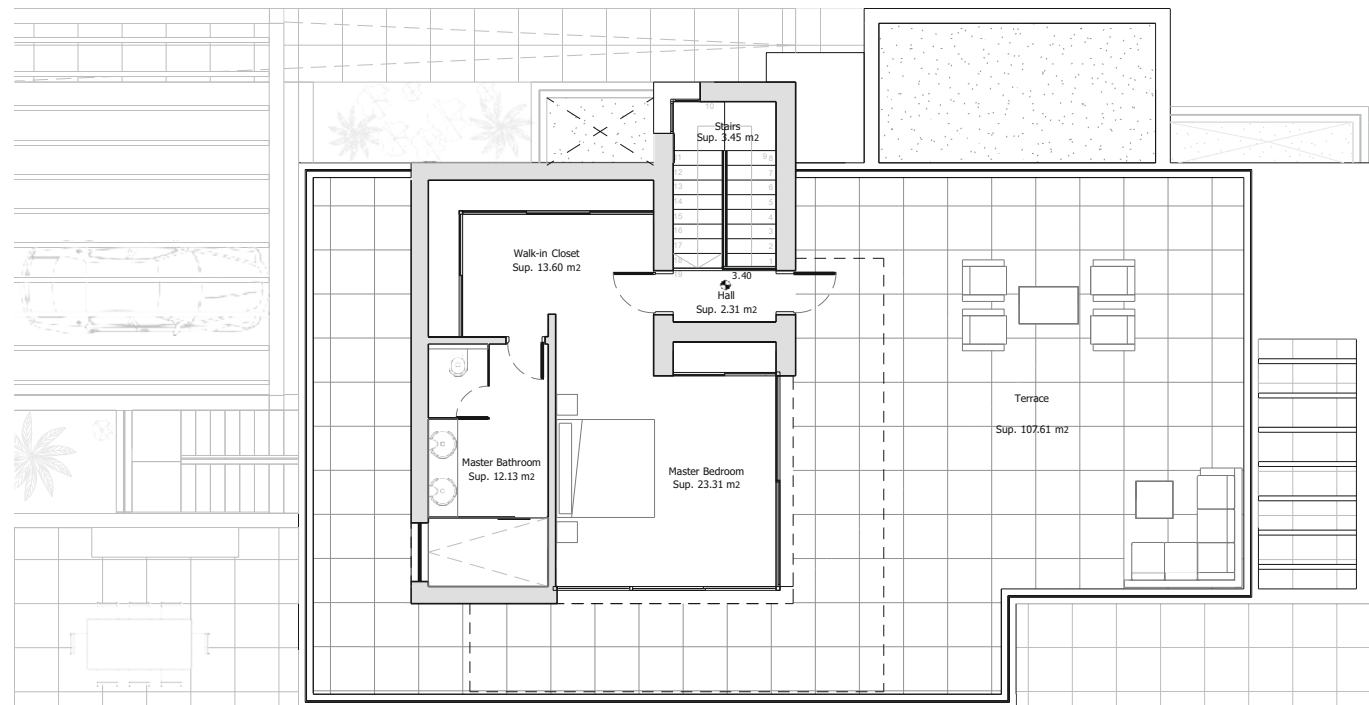


During the development of the project, the Management reserves the right to make the necessary changes, due to legal, administrative, technical, commercial or supply requirements, in distributions, dimensions and surfaces. In no case these changes will imply a modification of the stipulated purchase price. The furniture and any decorative elements that appear on the plans are simply a recreation for orientative and non-binding purposes, in no case are they included in the purchase price of the villa.

FIRST FLOOR

METRES

Solarium	————	107,61m ²
Useful	————	54,80 m ²
Built	————	71,75 m ²

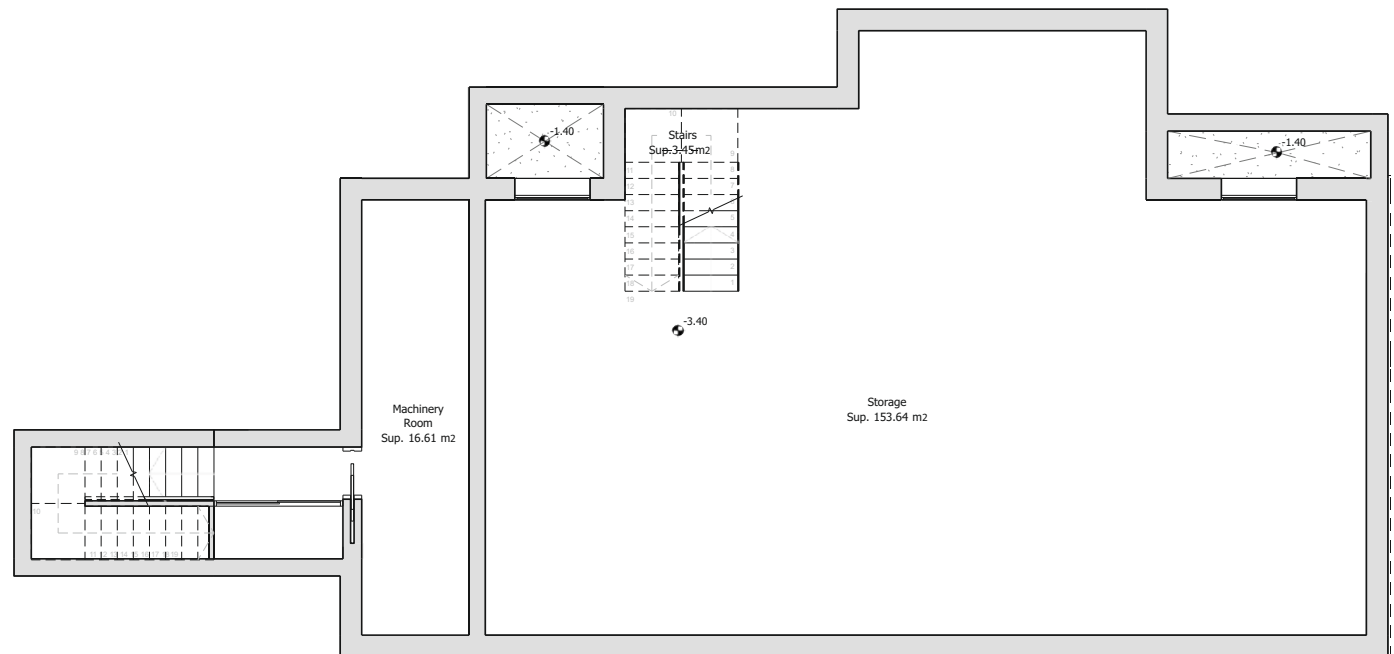


During the development of the project, the Management reserves the right to make the necessary changes, due to legal, administrative, technical, commercial or supply requirements, in distributions, dimensions and surfaces. In no case these changes will imply a modification of the stipulated purchase price. The furniture and any decorative elements that appear on the plans are simply a recreation for orientative and non-binding purposes, in no case are they included in the purchase price of the villa.

BASEMENT

METRES

Useful ——— 173,70 m²
Built ——— 204,09 m²



During the development of the project, the Management reserves the right to make the necessary changes, due to legal, administrative, technical, commercial or supply requirements, in distributions, dimensions and surfaces. In no case these changes will imply a modification of the stipulated purchase price. The furniture and any decorative elements that appear on the plans are simply a recreation for orientative and non-binding purposes, in no case are they included in the purchase price of the villa.