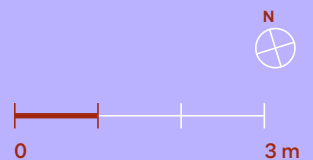
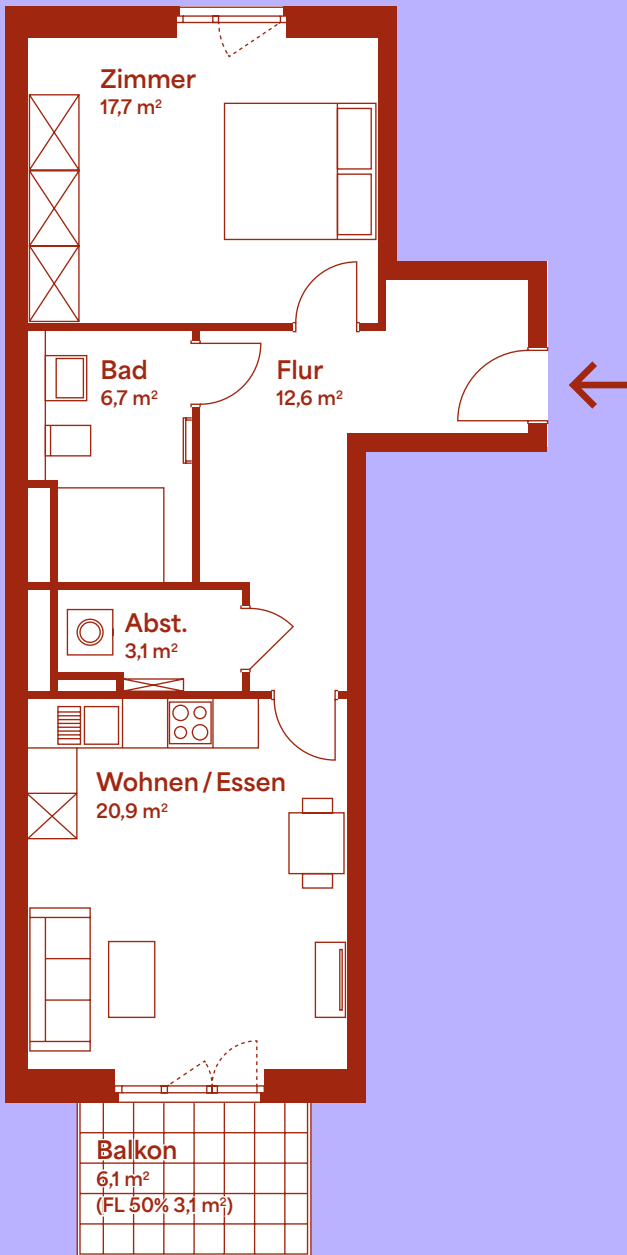


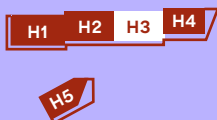
# Wohneinheit 49

3. Obergeschoss | Haus 3 | 2 Zimmer

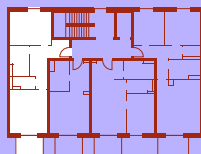
# ROTEN BLEICHER



LAGEPLAN



3. OBERGESCHOSS



ANSICHT WEST



Zimmer	17,7 m <sup>2</sup>
Bad	6,7 m <sup>2</sup>
Flur	12,6 m <sup>2</sup>
Abstellraum	3,1 m <sup>2</sup>
Wohnen / Essen	20,9 m <sup>2</sup>
Balkon (50%)	3,1 m <sup>2</sup>
<b>Grundfläche ca.</b>	<b>64,1 m<sup>2</sup></b>