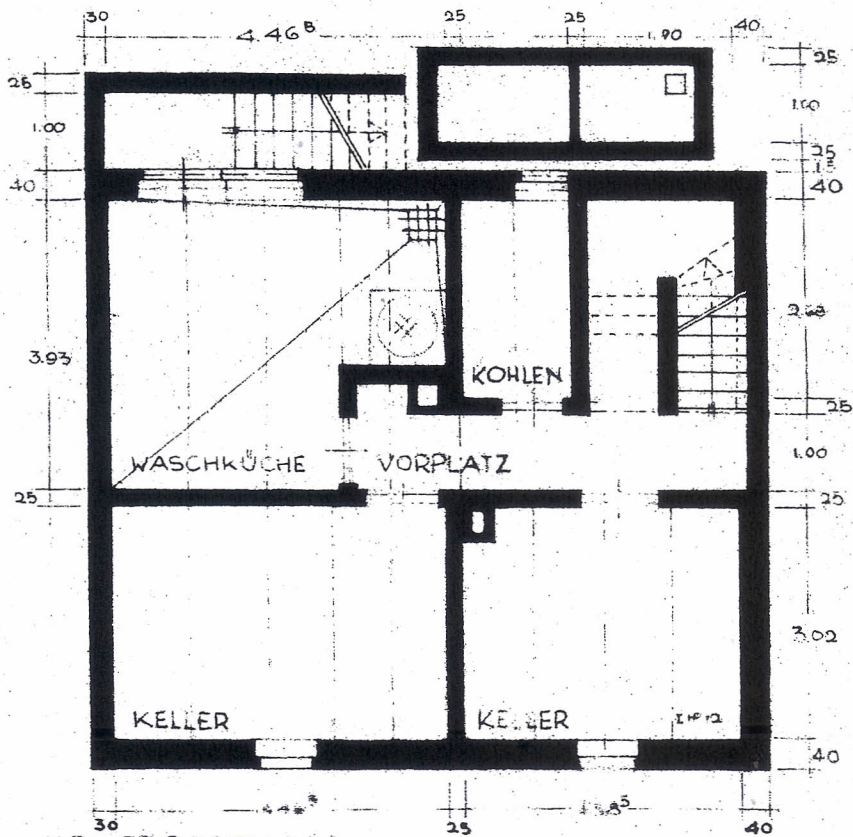
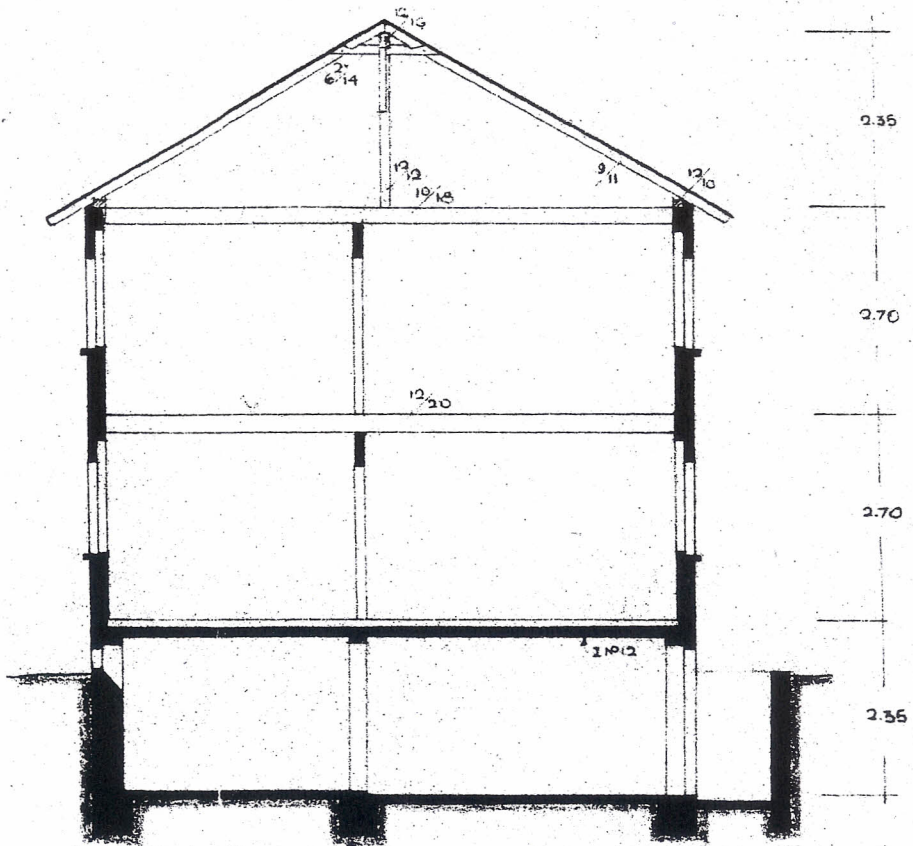


ERDGESCHOSS

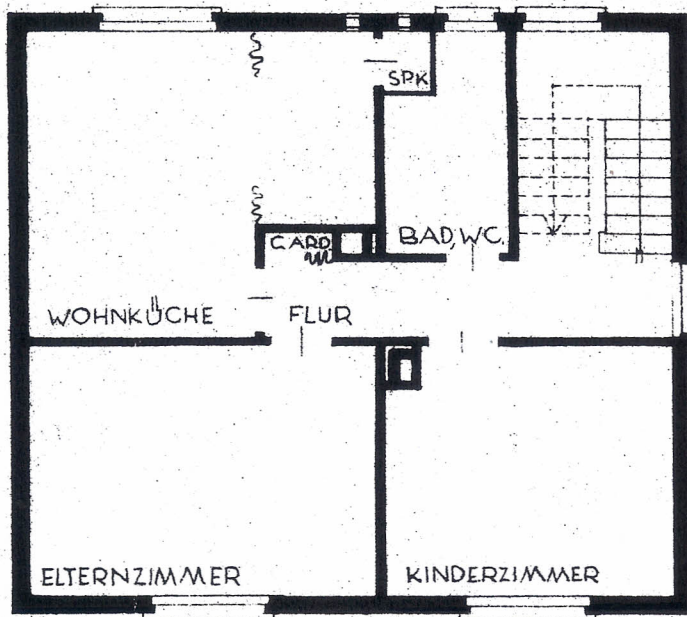


KELLERGESCHOSS



SCHNITT A-B

Gezeichnet:
Lilbrantz
 Bezirksbaumeister

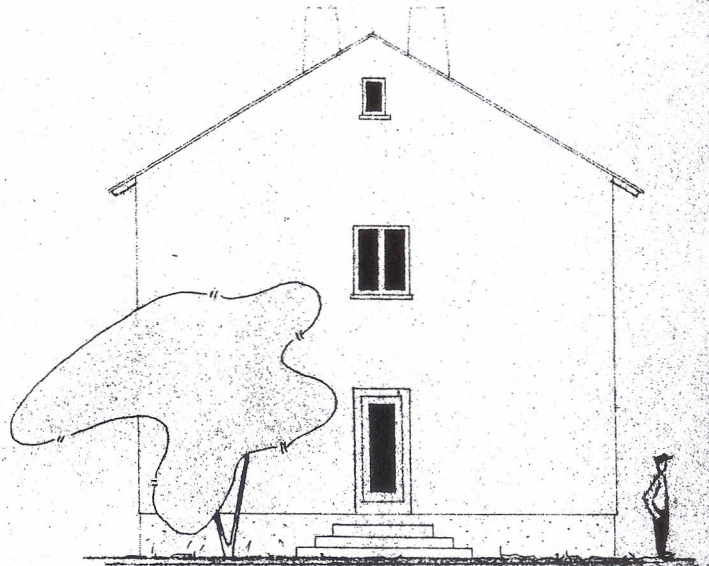


OBERGESCHOSS

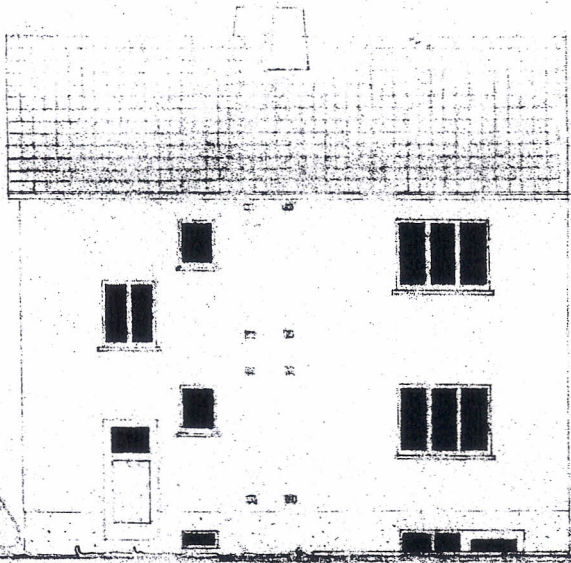
M. = 1:100



STRASSENANSICHT



SEITENANSICHT



HOFANSICHT

OFTERSHEIM, IM JUNI 1952

BAUHERR:

Georg W. H. H. H.

PLANFERTIG. + BAULEITER:

DIPL.-ING. WALTER WEBER
ARCHITECT
OFTERSHEIM, MANNHEIM
AUGUSTA-STRASSE