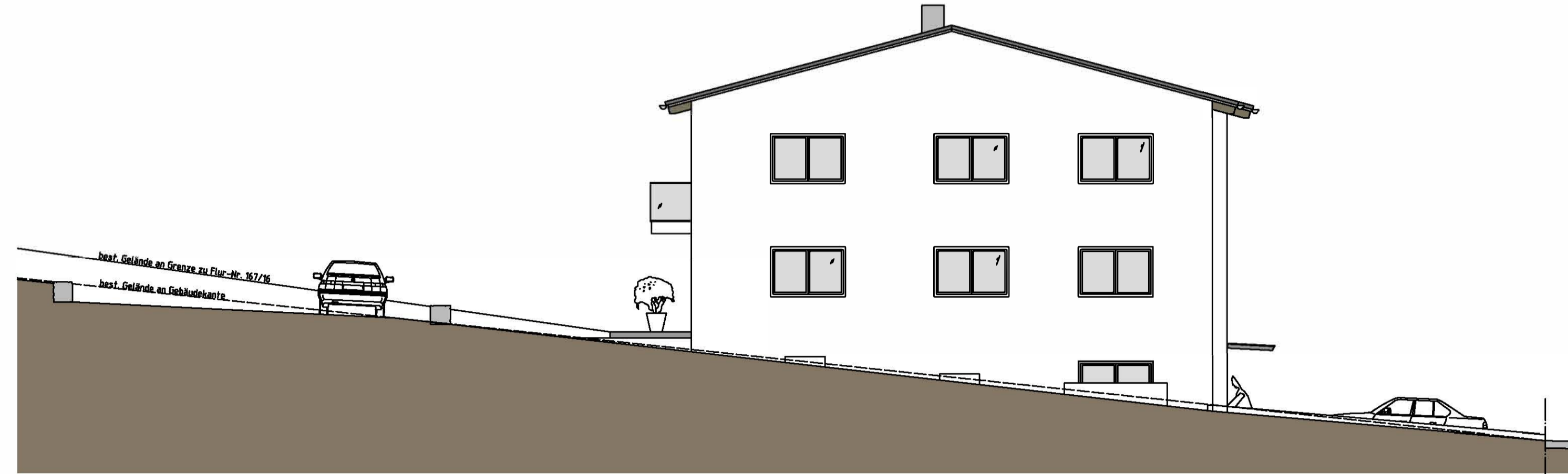


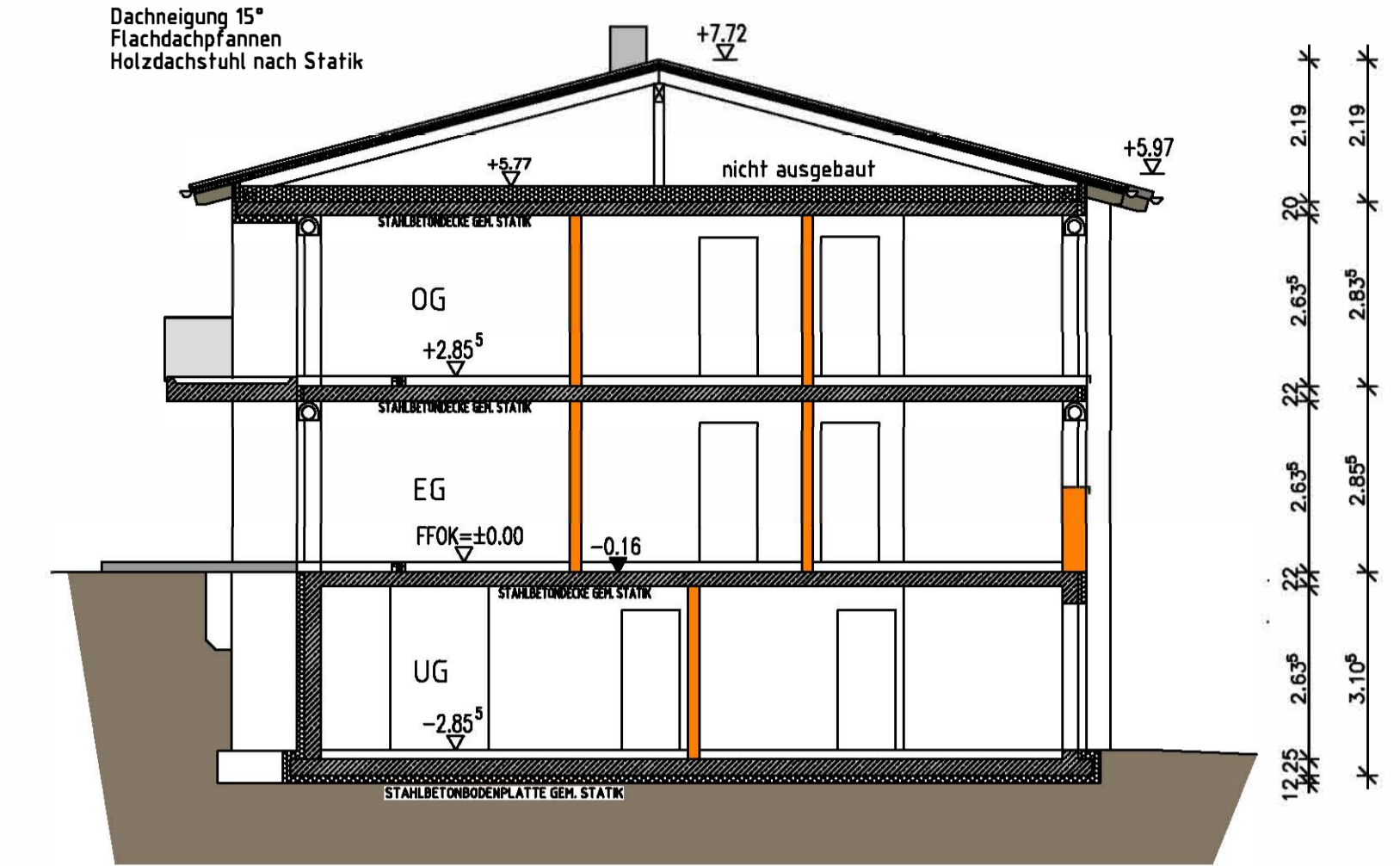
ANSICHT VON SÜDEN



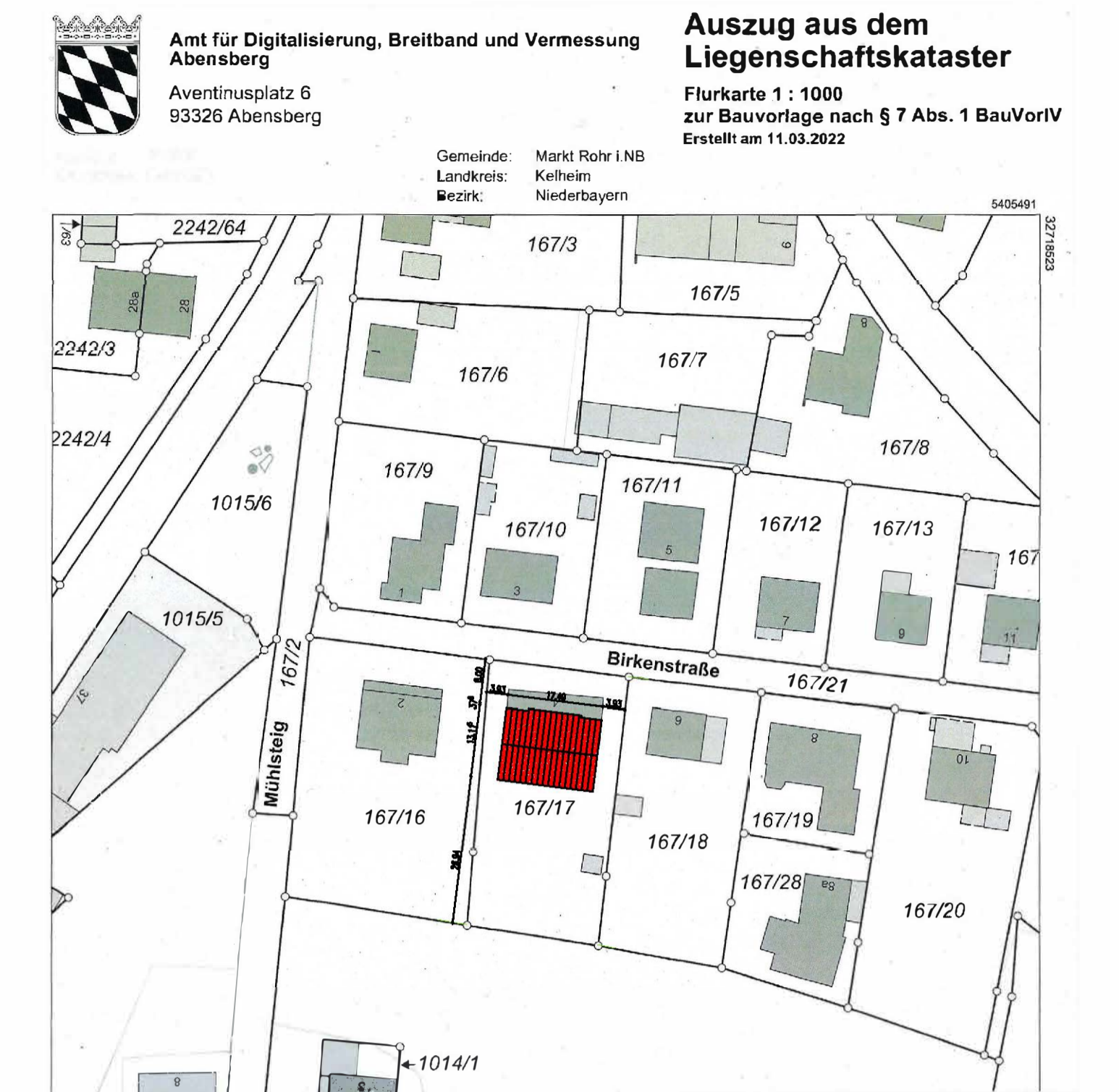
ANSICHT VON OSTEN



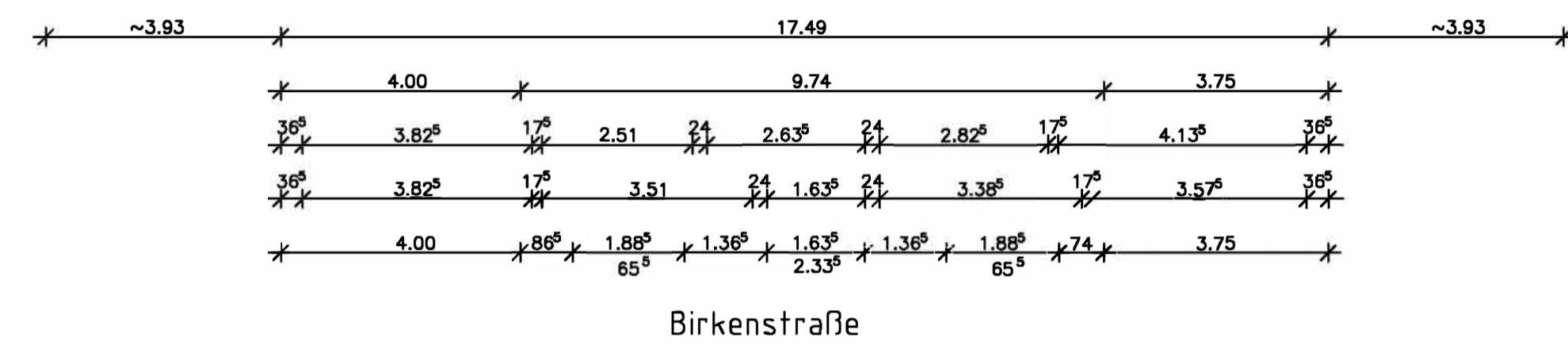
SCHNITT A - A



LAGEPLANAUSSCHNITT



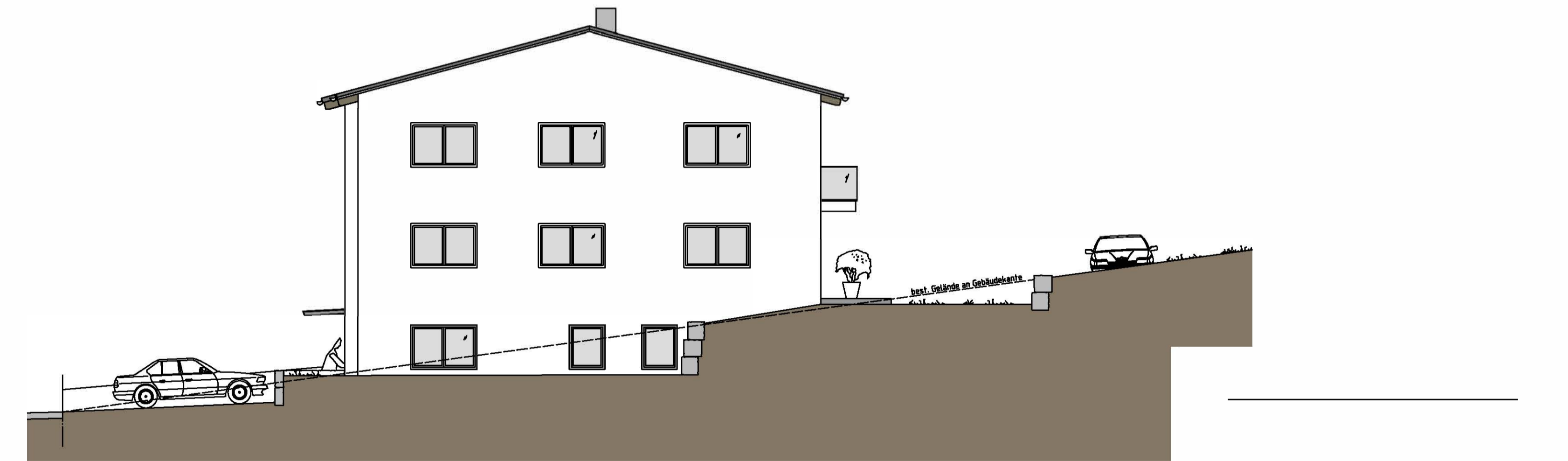
ERDGESCHOSS



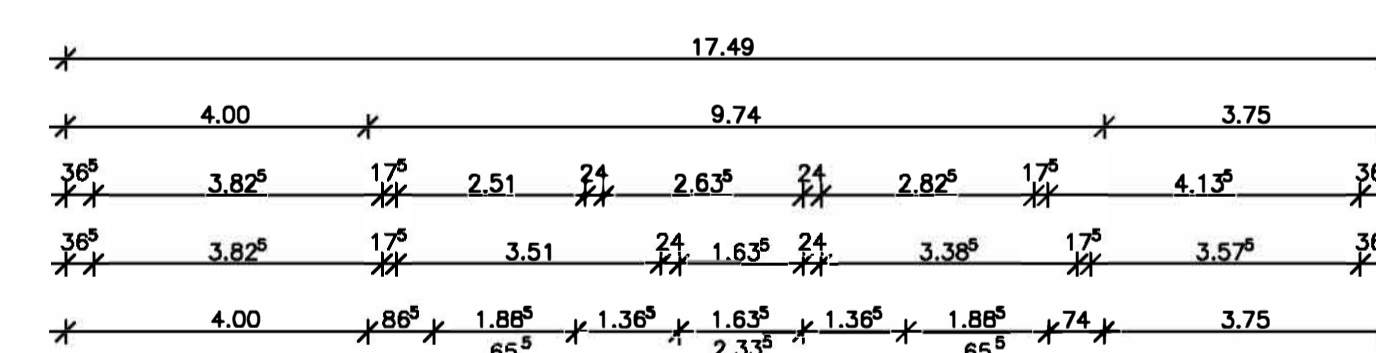
ANSICHT VON NORDEN



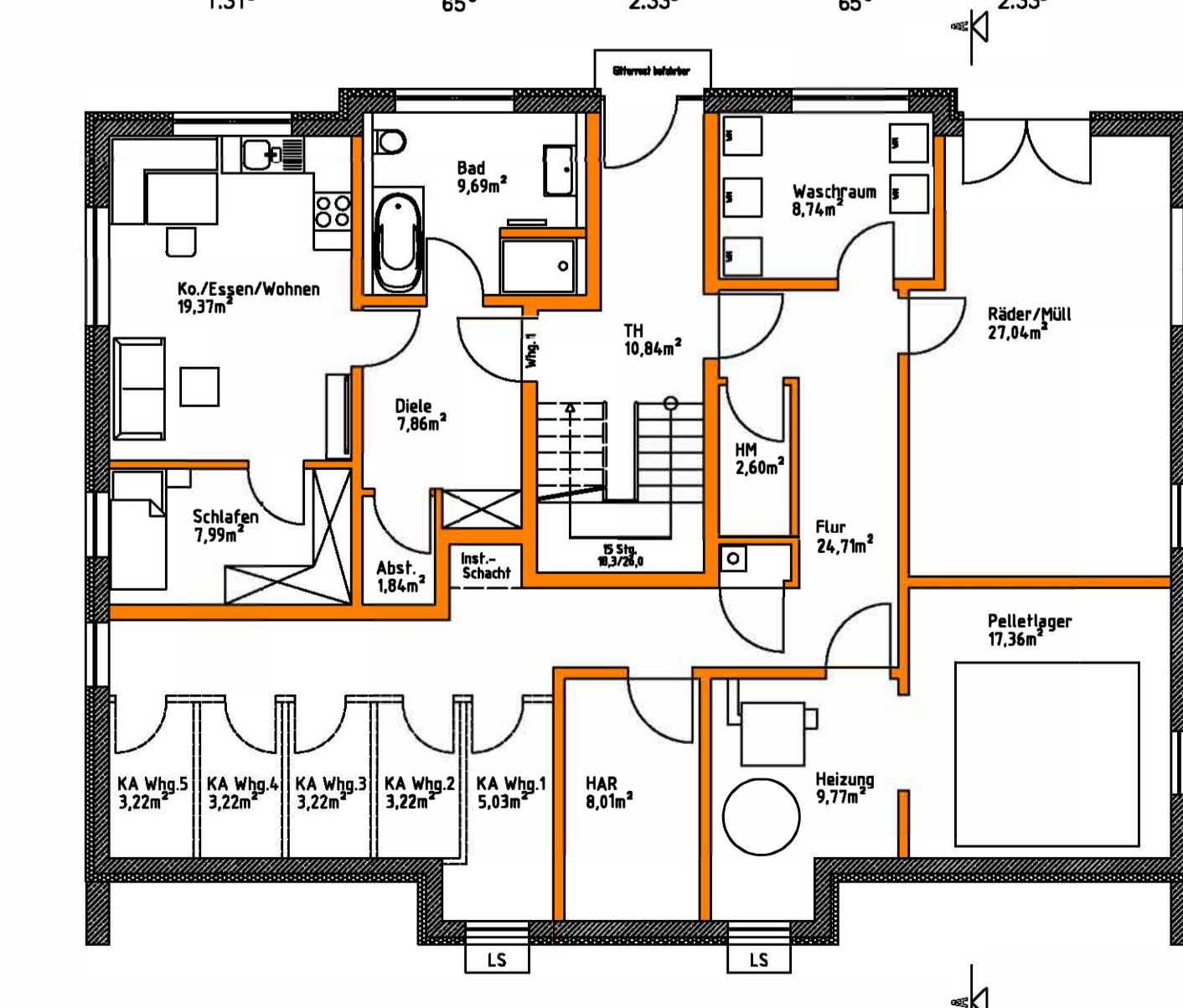
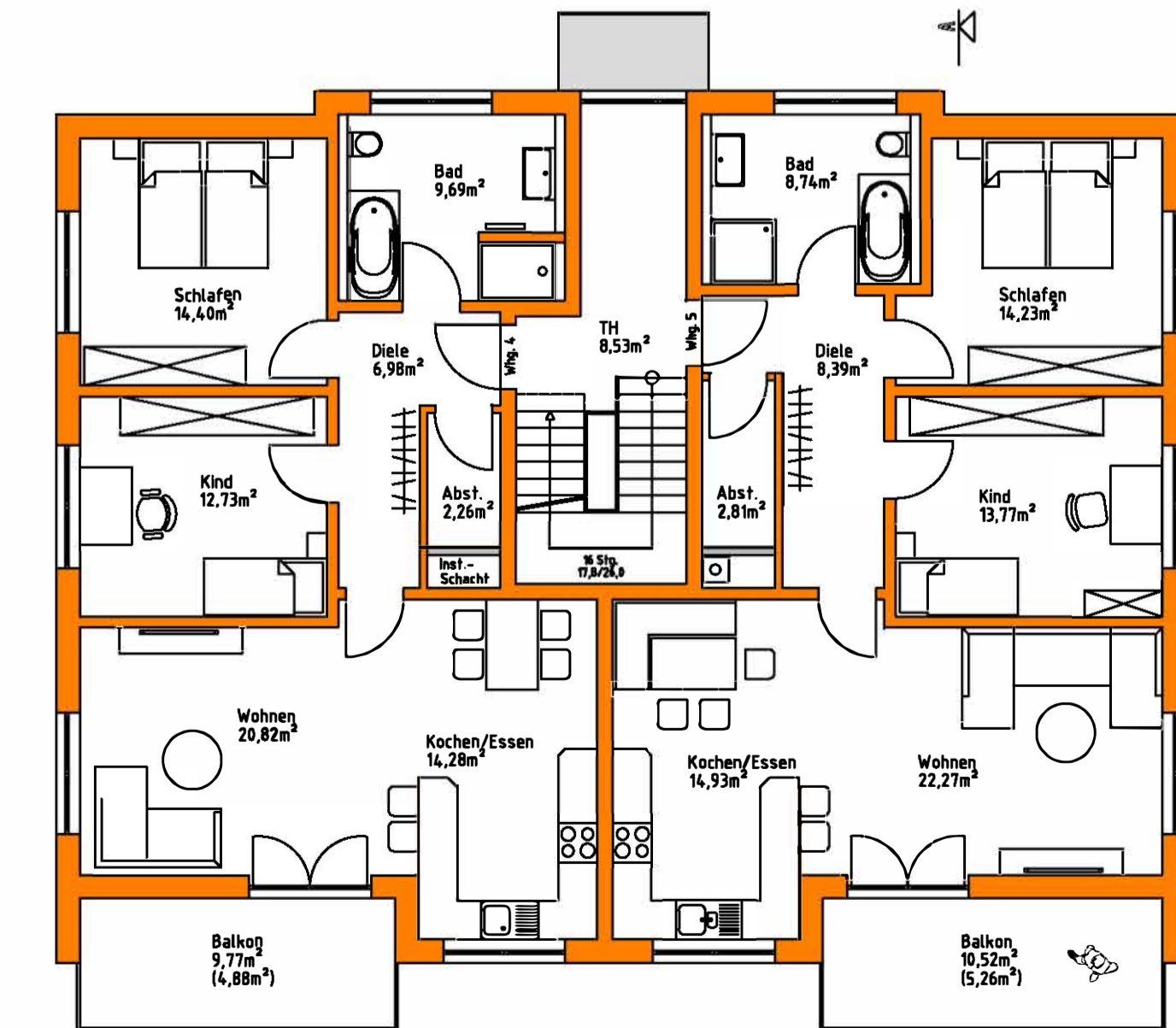
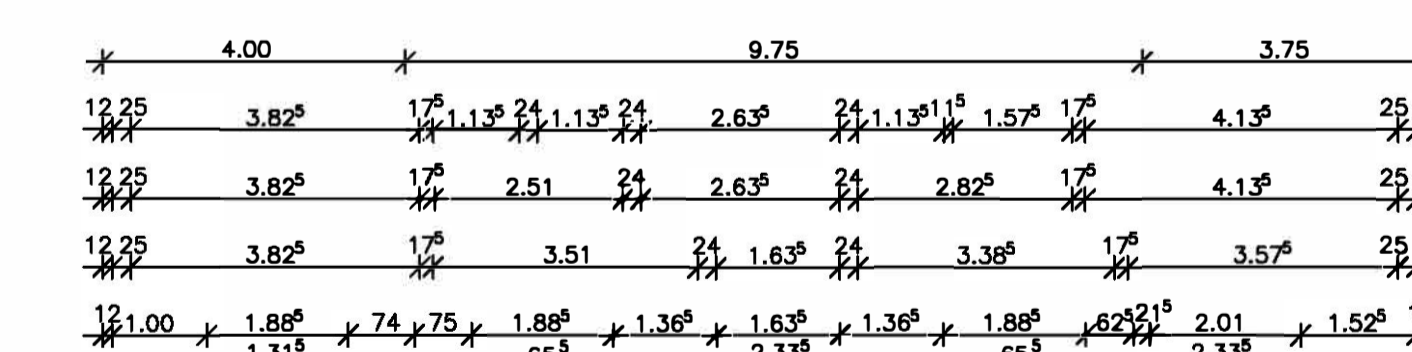
ANSICHT VON WESTEN



OBERGESCHOSS



UNTERGESCHOSS



# BAUVORLAGE M 1:100

DARSTELLUNG:  
Grundrisse, Schnitt, Lageplanausschnitt

UNTERSCHRIFTEN:

BAUHERREN: \_\_\_\_\_

ANGRENZER: \_\_\_\_\_

BAUAMT: \_\_\_\_\_