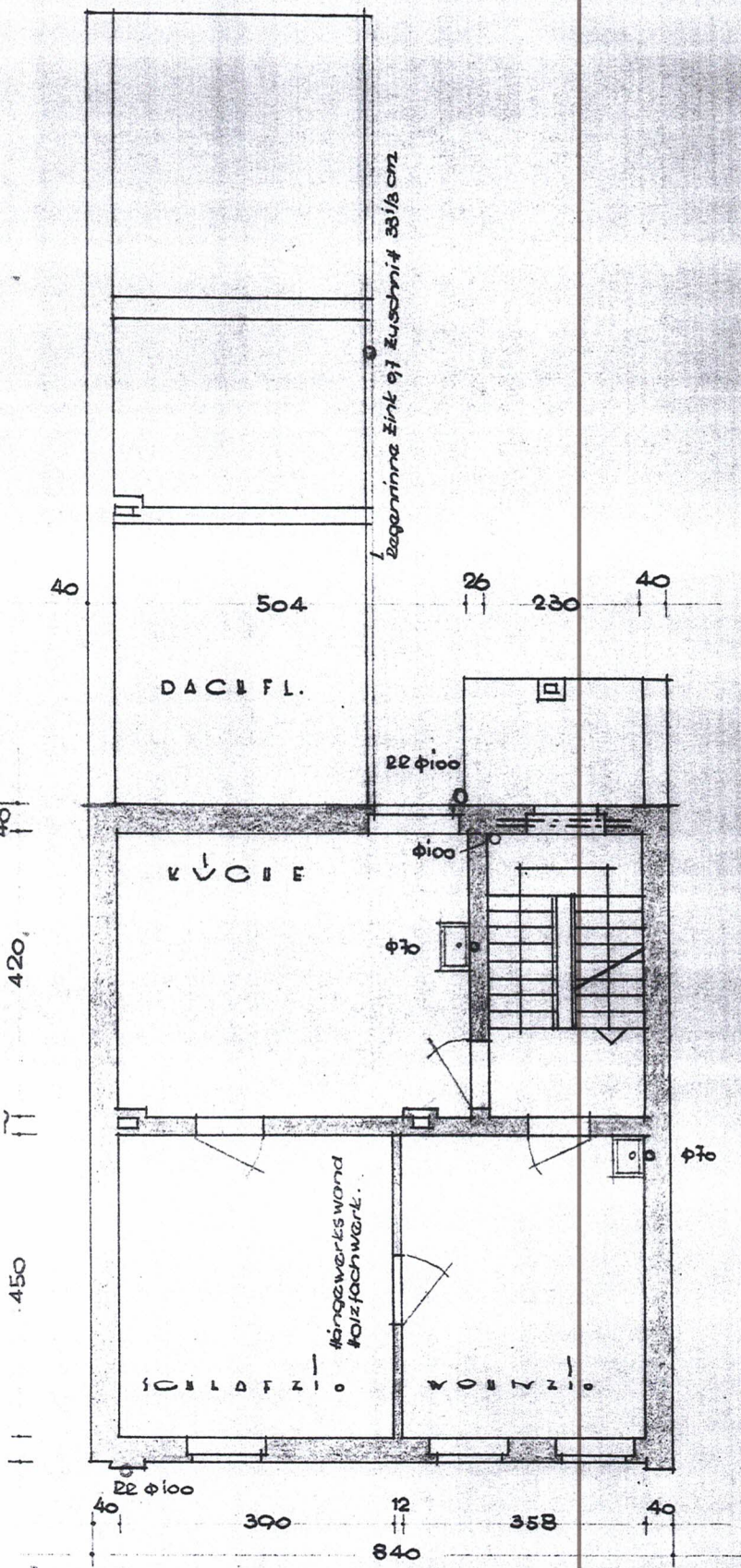
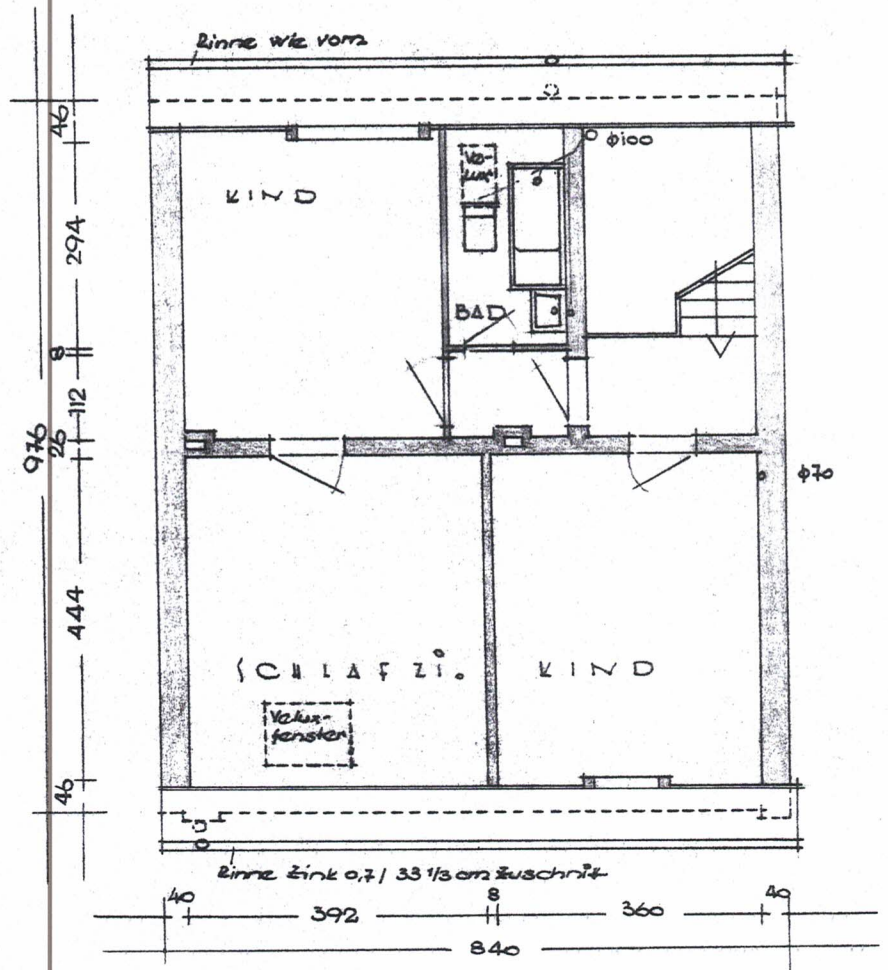
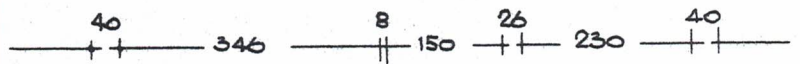


ERDGEISS



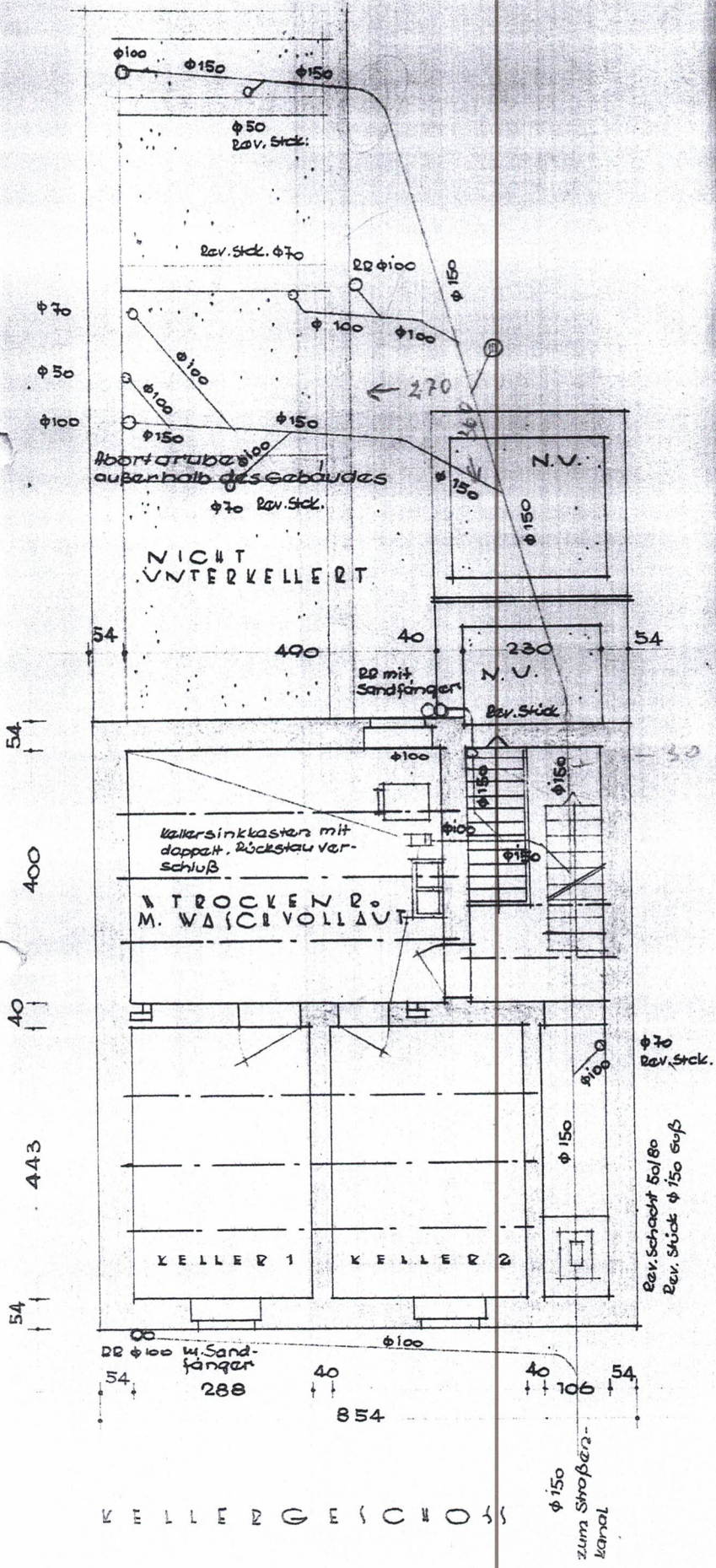


1. OBERGESCHOSS

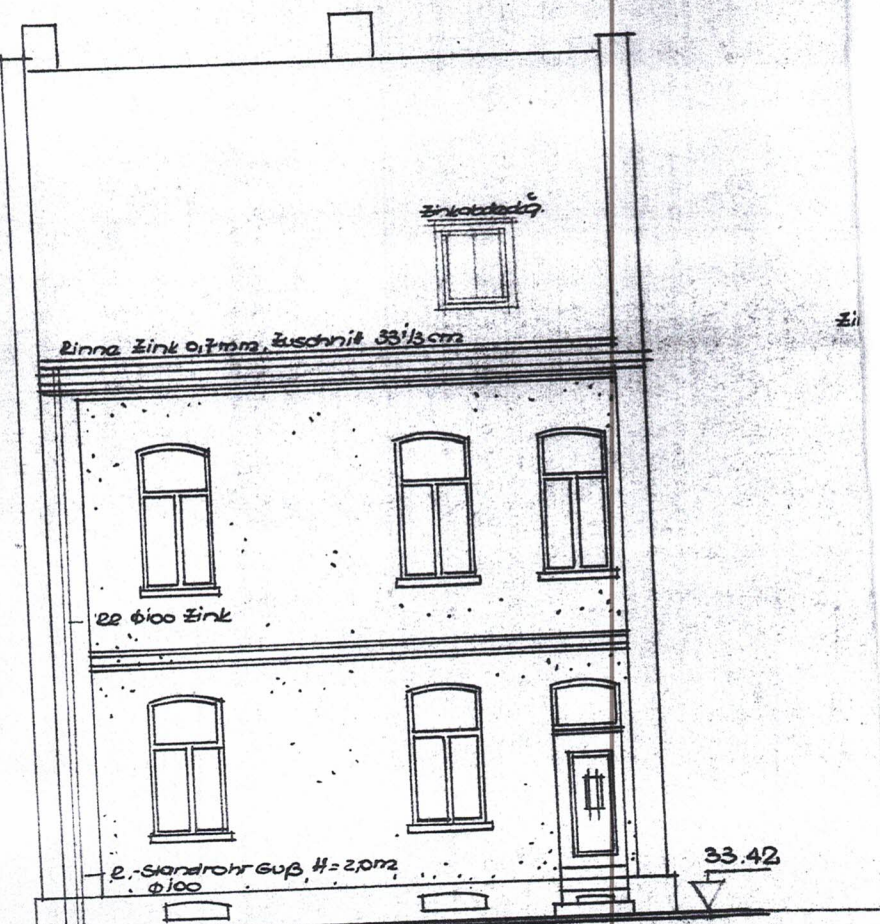


DACHGESCHOSS

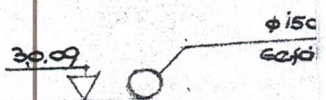








STRASSESEITE



φ150  
60φ

33.42

22 φ100 Zink

Binne Zink 0,7mm, Zuschnitt 33 1/3 cm

Zinkblech

2. Ständerrohr Guß H=2,0m2 φ100

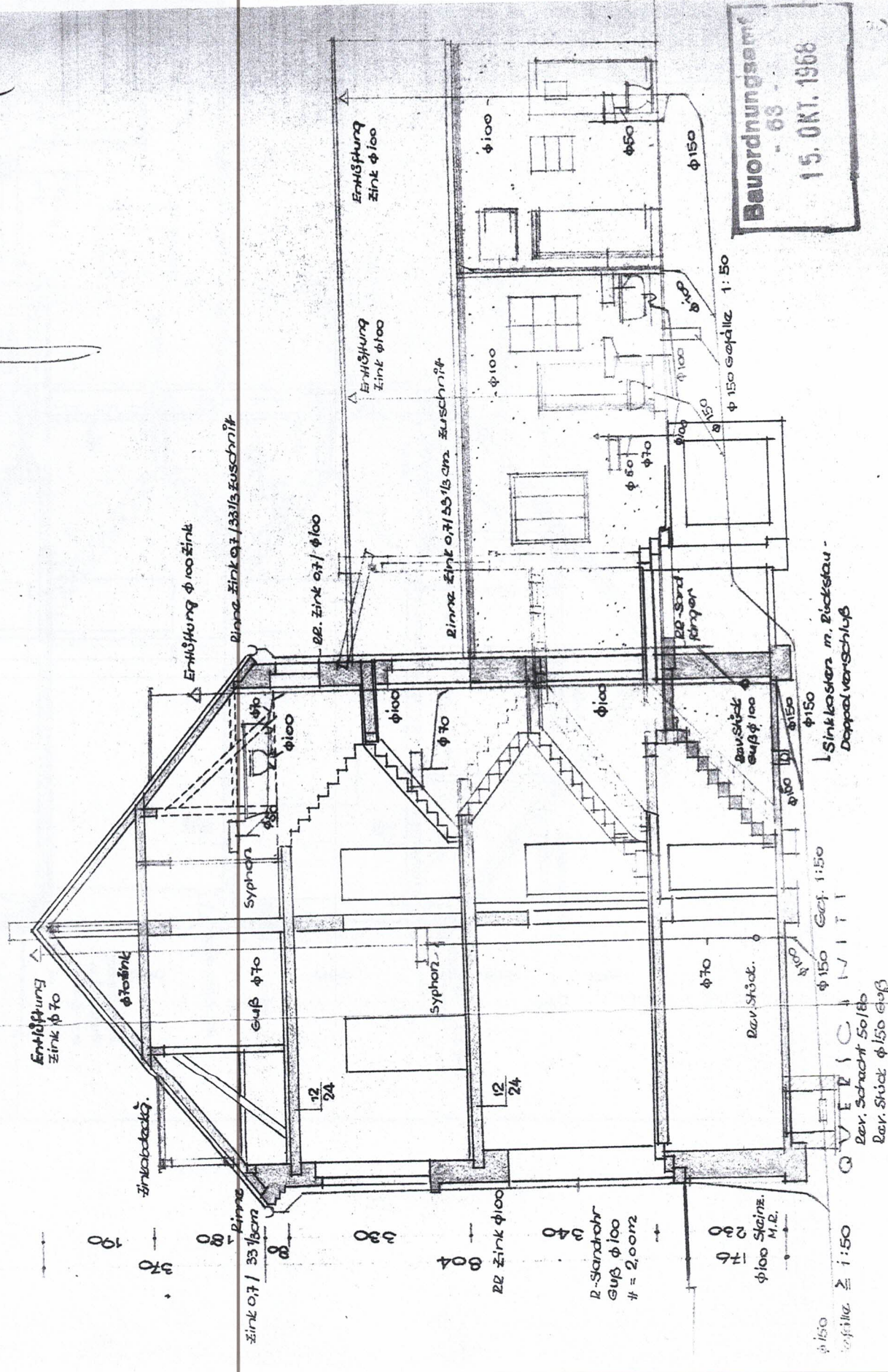


ARCHIT

1966

*Handwritten signature/initials*

Bauordnungsamt  
- 63 -  
15. OKT. 1968



Entlüftung  
Zink φ 70

190

Zinkabdeckung

370

Entlüftung φ 100 Zink

Zink 0.7 / 33 1/3 cm

100

BB. Zink 0.7 / φ 100

22 Zink φ 100

100

Syphon

Entlüftung  
Zink φ 100

100

Rinnzink Zink 0.7 / 33 1/3 cm Zurschnitt

2 Sandrohr  
Øuß φ 100  
# = 2,00m2

140

Rinnzink 0.7 / 33 1/3 cm

φ 100 Saugrohr  
M.R.

170

Entlüftung  
Zink φ 100

100

φ 70

150

Ber. Stück

170

Ber. Stück

170

φ 150 Gefälle 1:50

φ 150 Gef. 1:50

150

φ 150 Gefälle 1:50

φ 150 Gef. 1:50

150

Sinkkasten m. Rückstau-Doppelschluß

150

φ 150 Gef. 1:50

150

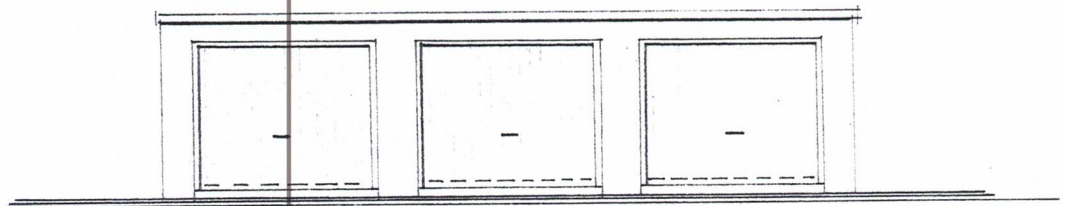
Ber. Stück 50/80

Ber. Stück φ 150 Gef. 1:50

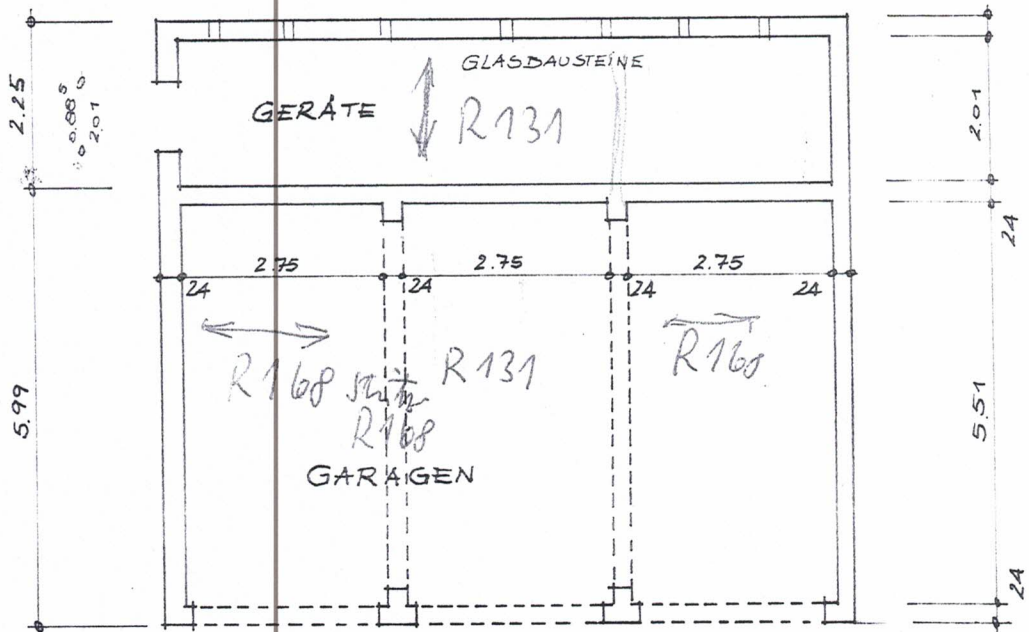
150

φ 150

Gefälle ≥ 1:50



ANSICHT



GRUNDRISS

Garagen