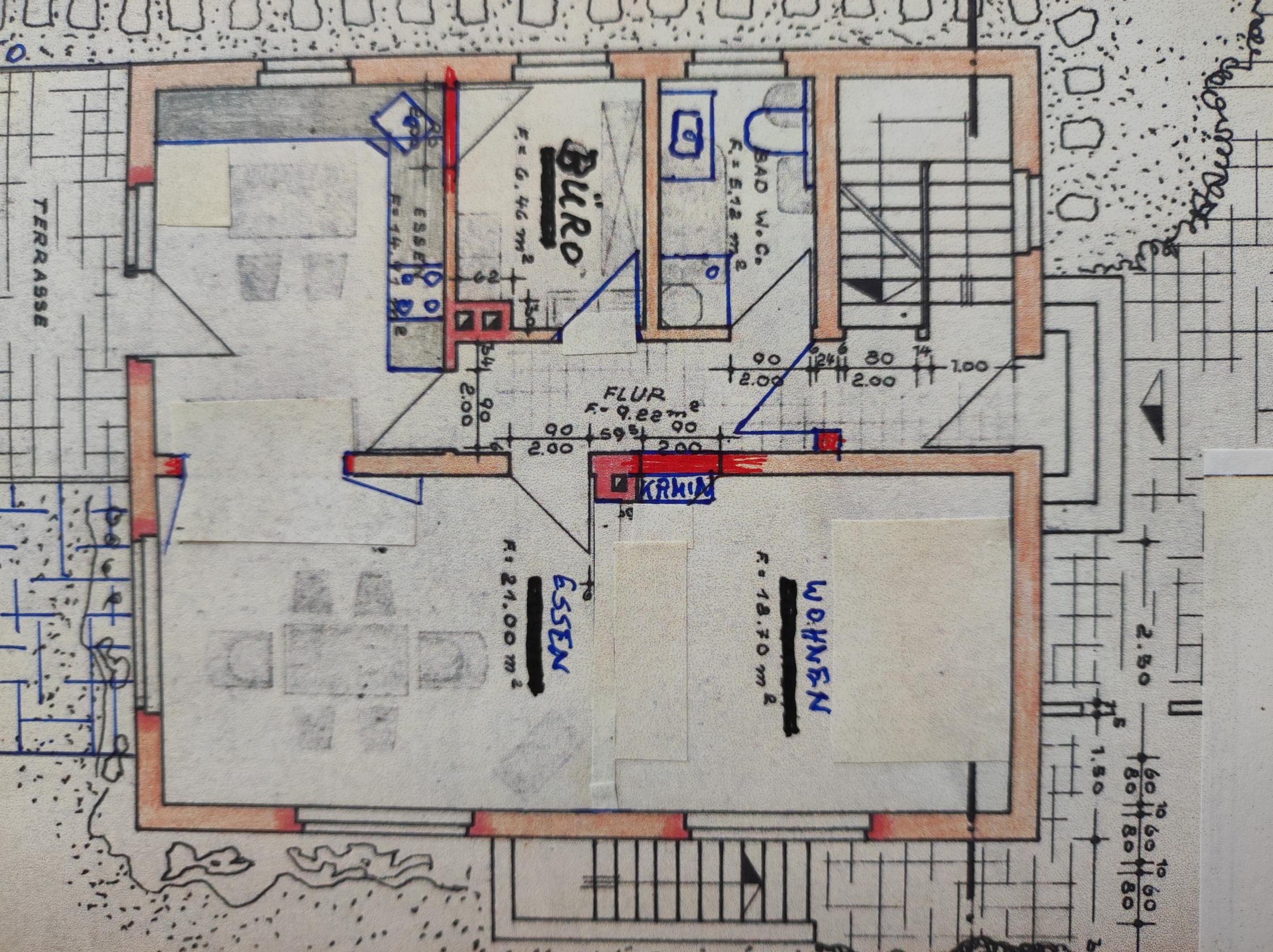


Erdgeschoss

Wohnungsbau



2.50
1.50
0.60
0.80
0.10
0.20
0.30
0.40
0.50
0.60
0.70
0.80

TERRASSE

Büro
 $F = 6.46 \text{ m}^2$

BAD W.C.
 $F = 5.12 \text{ m}^2$

FLUR
 $F = 9.22 \text{ m}^2$

KRHM

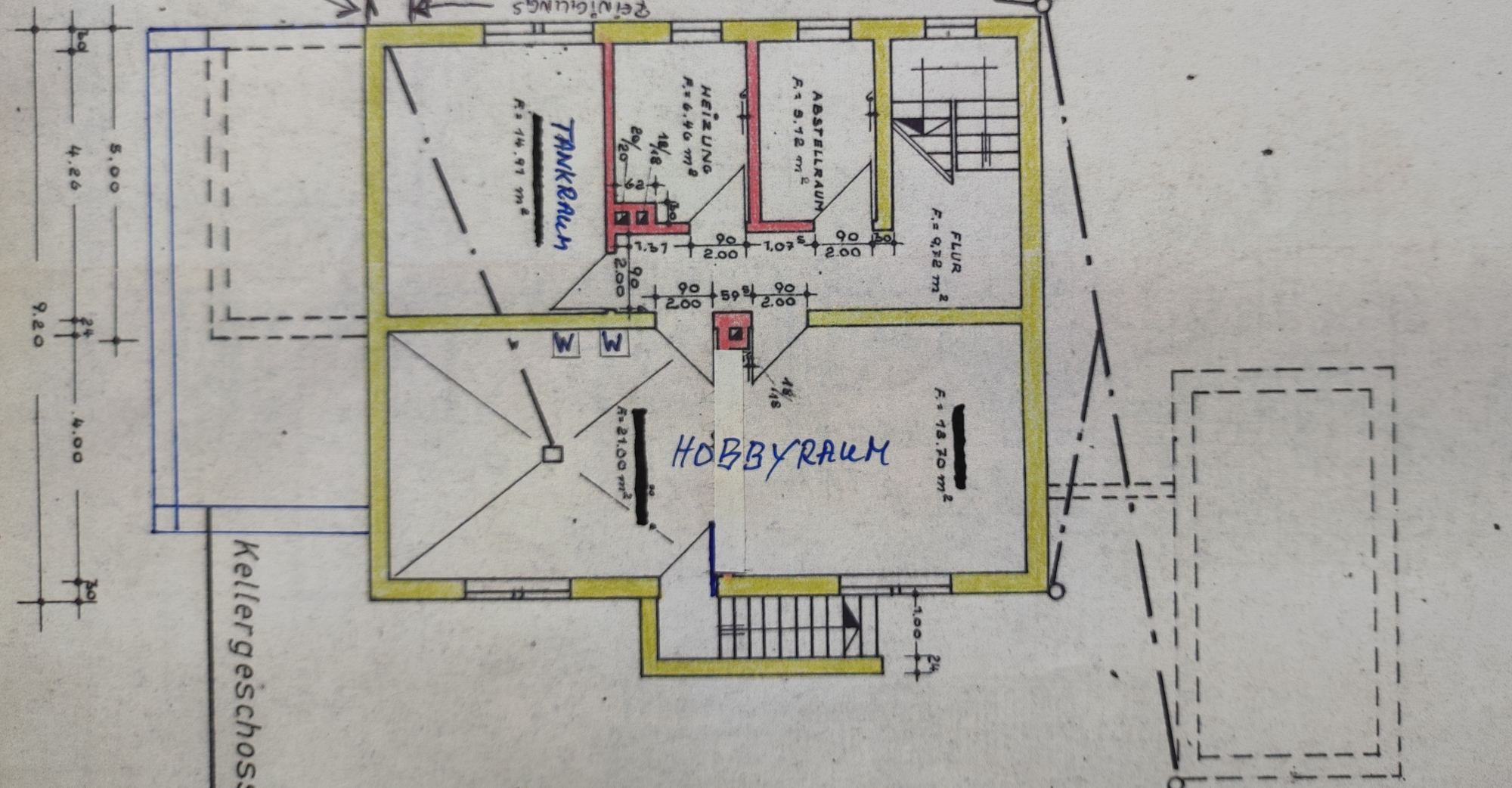
WOHNEN
 $F = 18.70 \text{ m}^2$

ESSEN
 $F = 21.00 \text{ m}^2$

ESSE
 $F = 14.11 \text{ m}^2$

2. BEIDE TRÄNNGE.
 2. UNTERES WASSER IN
 ZICHTUNG WÄRME
 FÜHRT OST SEITE
 UND IST MIT KANAL

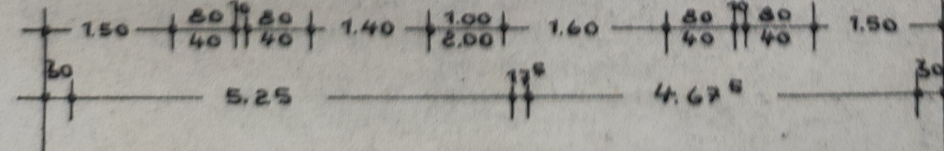
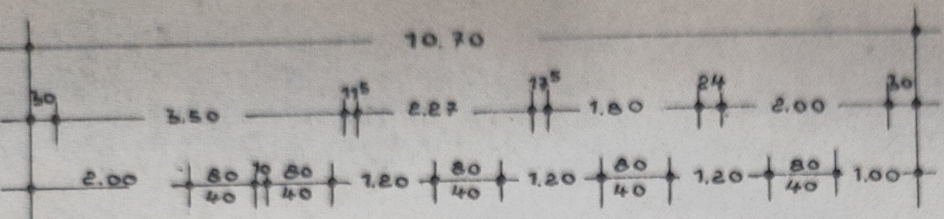
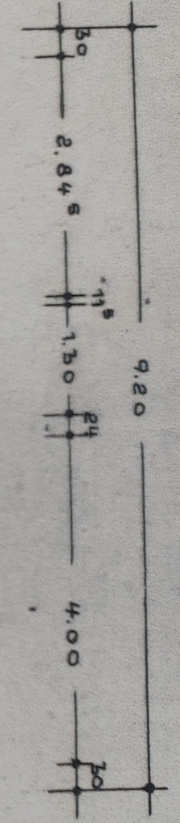
1. BODENBELAG
 WÄSSERUNG
 ZU DIESEM SCHICHT
 LAUFEN ZUSÄTZLICH:
 1. BODENBELAG
 WÄSSERUNG



2. BEIDE TRÄNNGE.
 2. UNTERES WASSER IN
 ZICHTUNG WÄRME
 FÜHRT OST SEITE
 UND IST MIT KANAL

1. BODENBELAG
 WÄSSERUNG
 ZU DIESEM SCHICHT
 LAUFEN ZUSÄTZLICH:
 1. BODENBELAG
 WÄSSERUNG

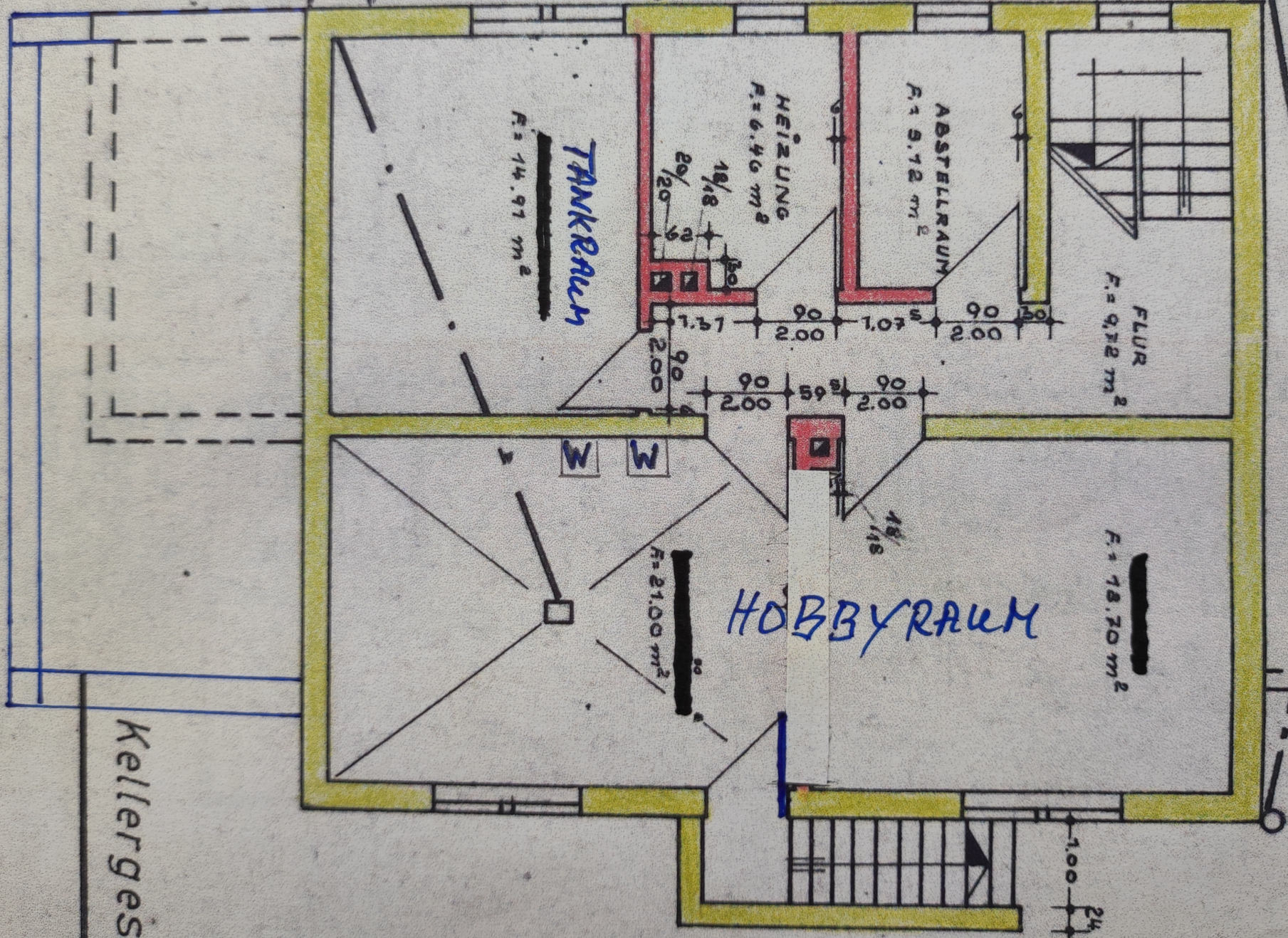
Kellergeschoss



IN DIESEM SCH
 LAUFEN ZUSAMMEN:
 1. BODFÜHRUNG
 WÄRMISCHICHT

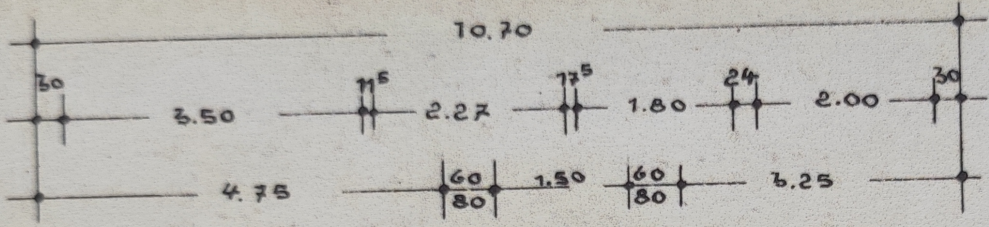
FEINIGUNGS
SCHICHT

209
 5.00
 4.26
 24
 4.00
 201

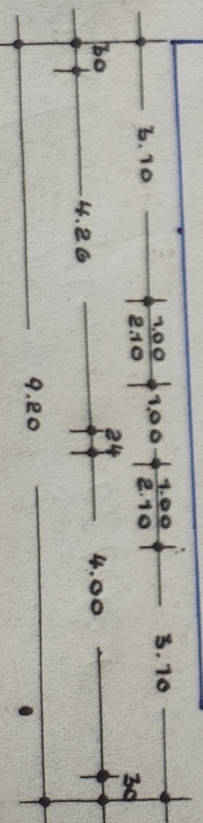


Kellergeschoss

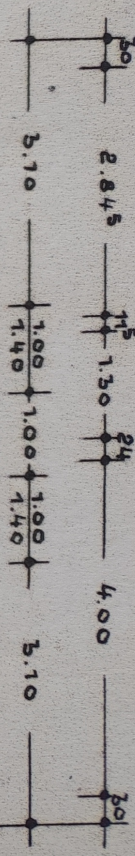
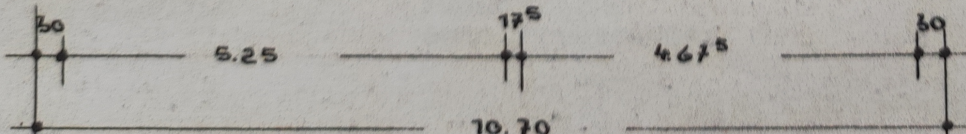
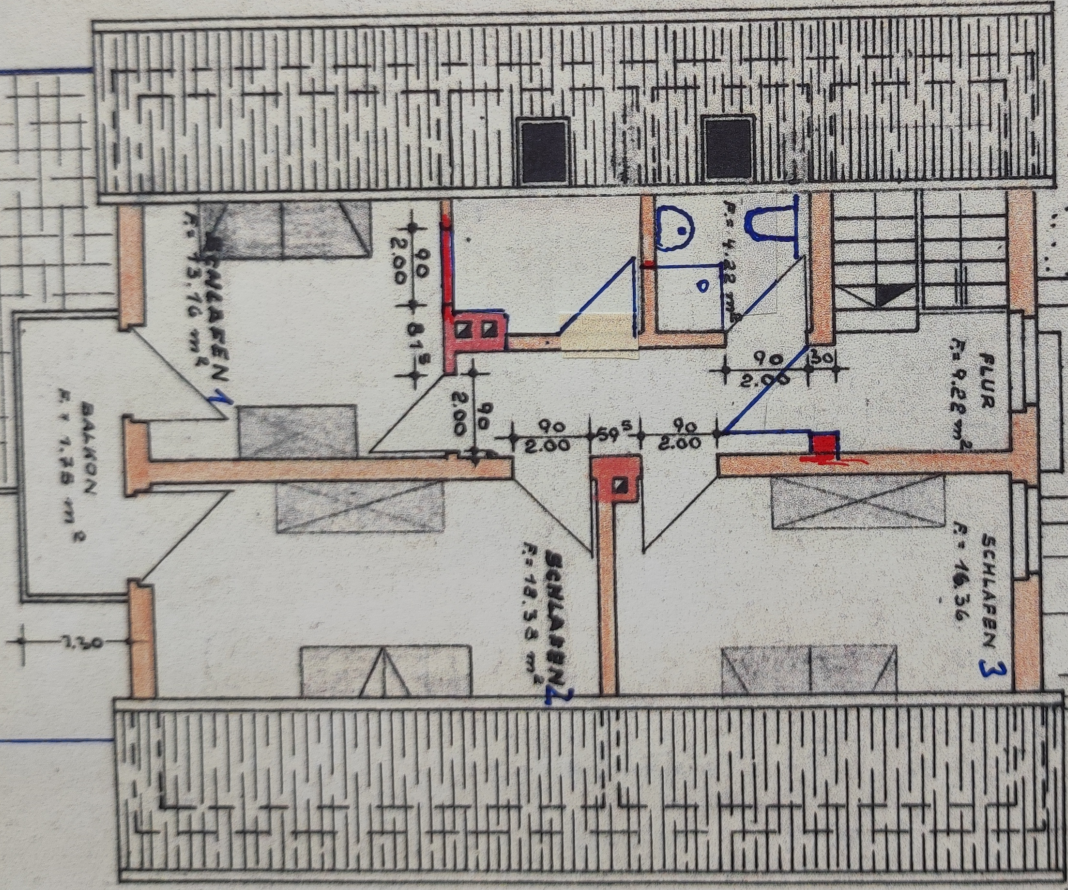
1.00 24



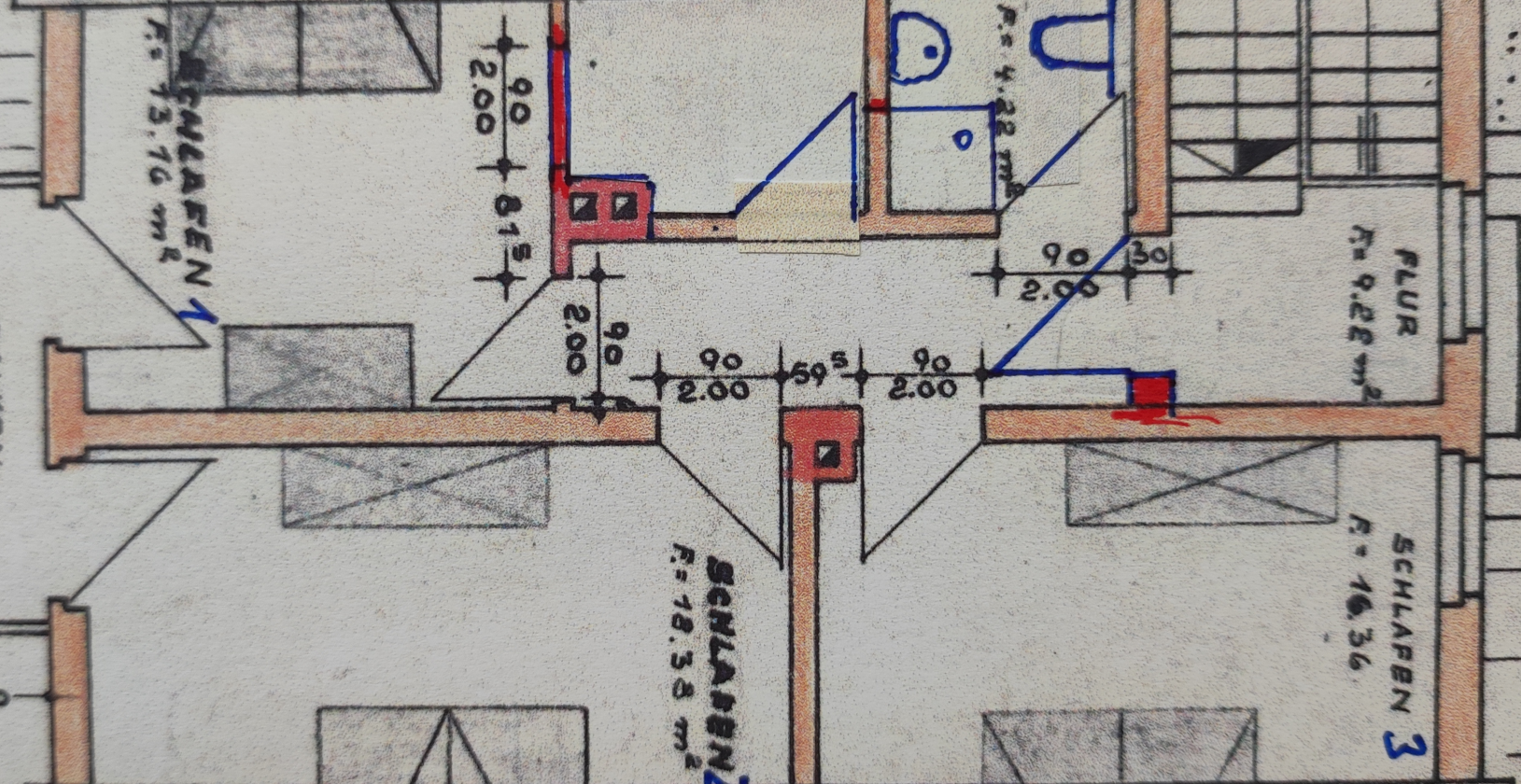
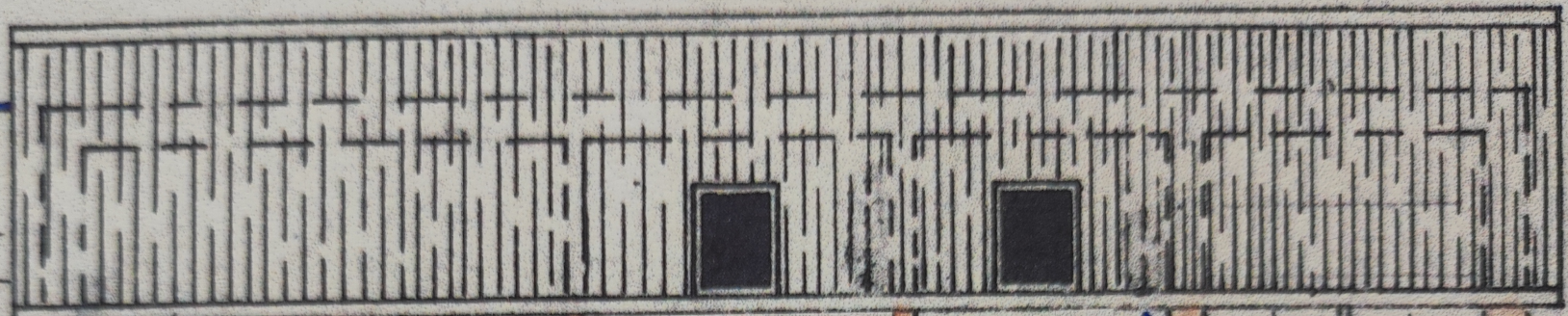
VELUX FENSTER



Dachgeschoss



VELUX FENSTER



3.50

0.30

Dachges

4.75

80

80

5.25

SCHLAFEN 1
F = 13.10 m²

BALCON
F = 7.35 m²

SCHLAFEN 2
F = 18.38 m²

FLUR
F = 9.22 m²

SCHLAFEN 3
F = 16.36 m²

F = 4.22 m²

2.00 0.15

2.00 90

90 2.00

59 S

90 2.00

90 2.00

30