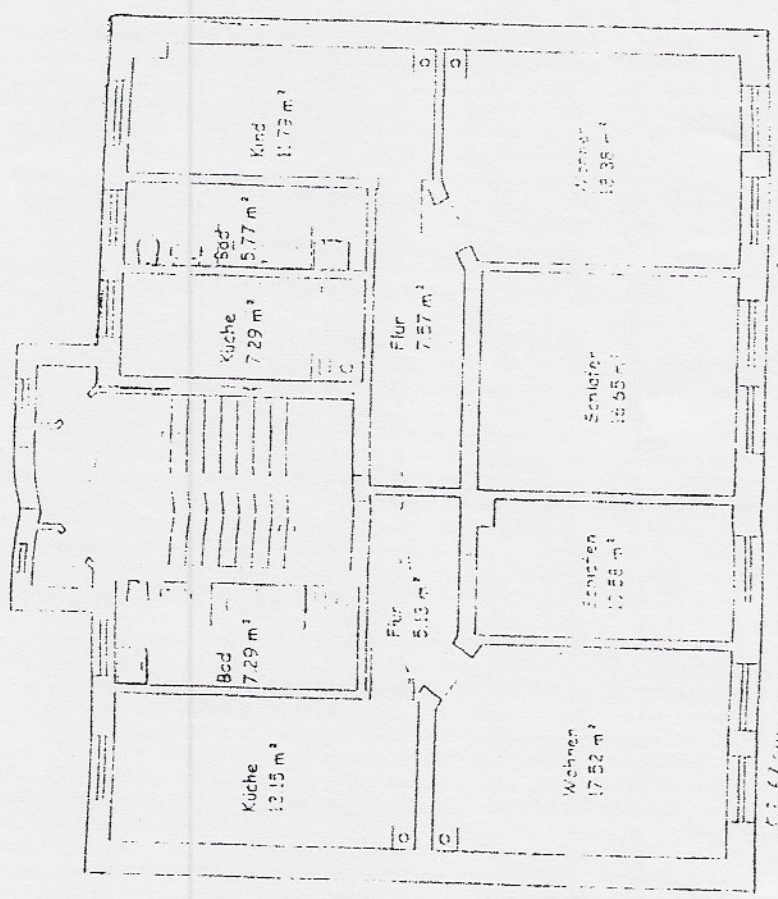


2.54 15 1.79 30 2.98<sup>5</sup> 30 1.79 15 1.42 15 2.29



5.24 30 4.14<sup>5</sup> 4.46 30 1.60 15 5.11<sup>5</sup> 30 4.14<sup>5</sup> 4.46 15 5.21<sup>5</sup> 15

2.54 15 3.47 15 5.11<sup>5</sup> 15 2.29  
 3.55<sup>5</sup> 15 2.44 15 3.77 15 3.65

bd bauplanungsbüro cölling  
 Hans- Marchwitza- Straße 20  
 04279 Leipzig

Grundriss 3. Obergeschoss  
 Cothner- Straße 27  
 04155 Leipzig