

- elite -
APARTMENTS





Carrington

LUXURY VILLAS & APARTMENTS GROUP

Carrington Group designs, builds and sells quality villas and apartments in North Cyprus specialising in the coastal area of Northern Cyprus east of Kyrenia, arguably the most beautiful part of the island that contains not one but three protected areas of natural beauty. We are always looking to the future and are now working on projects in downtown Kyrenia to add to our portfolio.

Our company Slogan has been well earned: 'A Reputation Growing On Success'

Founded by Sukru Karakaya, Carrington is a successful, Turkish Cypriot, family-run property construction business that still continues to go from strength to strength. Carrington's experience and attention to detail has helped us to become the Award Winning Company we are today. We are proud of all our villas and apartments and we enjoy helping our clients realise their dreams when buying in North Cyprus.

Our success is simple to explain; we take great satisfaction in offering 'the personal touch', so often lacking with larger companies. Buying property abroad and especially buying property in North Cyprus is a big step for people and we aim to help make the process as easy as possible; from start to finish we are there to help.



Our property services have expanded over the years to now include:

- Estate Agency www.homesabroadcyprus.com
- Property Maintenance and Repair
- Holiday Rentals division
- Property Management
- Site Maintenance
- Pool Maintenance
- Insurance Brokerage
- Car hire

North Cyprus



Standing at the crossroads of three continents, Cyprus has a long and vibrant history, a wonderful climate and the warmest welcome in the Mediterranean. The Island has long been a British favourite, but has since been discovered by many other nationalities and now hosts a diverse and strong growing tourism industry. North Cyprus offers the perfect combination of relaxation, countless leisure pursuits and breathtaking views along its long and beautiful coastline. It also offers opportunities to study and explore rich archaeological sites and medieval castles. With over 300 days of sunshine per year, clear blue turquoise unpolluted waters and uncrowded beaches, coupled with an impressive mountain backdrop, the North Cyprus landscape remains a natural and relatively undeveloped part of the Mediterranean where the pleasures of life can be enjoyed at your own pace. Add to this the friendliness and hospitality of the people and the wonderfully varied cuisine and you have the perfect recipe.



-elite-
APARTMENTS



SCENIC
LUXURY
APARTMENTS





-elite-
APARTMENTS



PRIVILIDGED
LIVING



We haven't only re-define the city life but also designed priviledged penthouses a here you will enjoy money other dimensions of luxury





Elite Residence project provides high returns met only as an investment but also maintains high standard of living space choices of 1+1 / 2+1 and 3+1 will be available in our Elite project . Elite project is located at the heart of the city of Kyrenia. Positioned very conveniently to provide explant access to main highways and at the some time you can enjoy the warriors facilities of traditional city life.

Elite project will be also benefitting from traditional Award wining Carrington standards we have wide range of different choices on finishes where enable our valued customers to have their own personal touches on their investment.

Carrington Signature Management (CSM)

As Carrington Group we have been managing ever 800 properties throughout Kyrenia region under our Award winning property management model. CSM is our pride where we at significant added value on your property investment







TYPE A

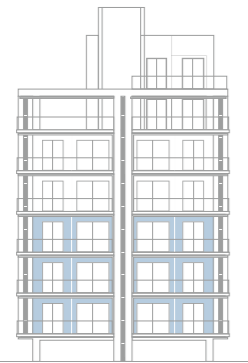
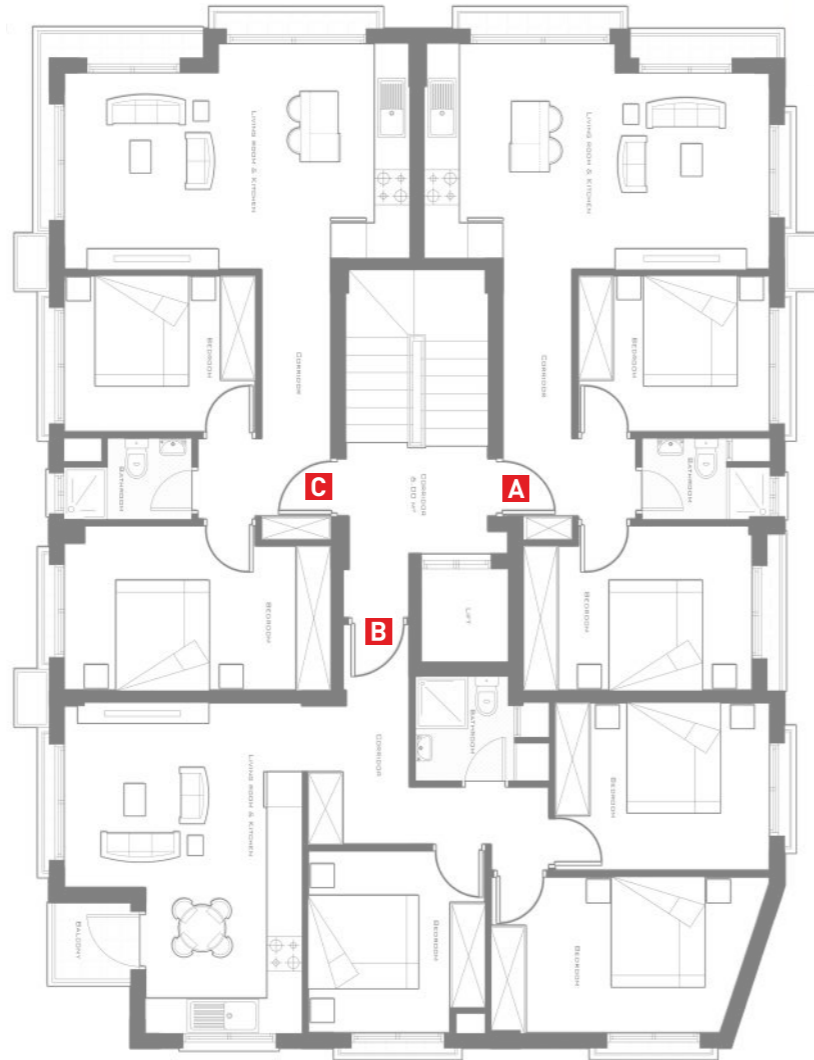
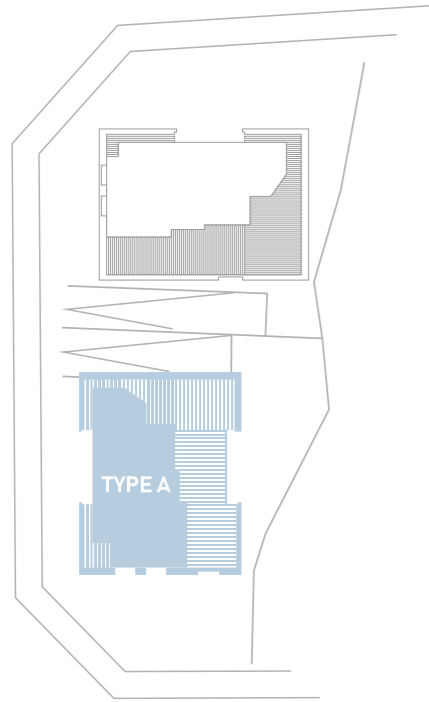


-elite-

APARTMENTS

TYPE A

- | | | |
|---------------------------------|-------------------------------|---------------------------------|
| A 2+1Flat: 1-4-7 | B 3+1Flat: 2-5-8 | C 2+1Flat: 3-6-9 |
| Clotet Area: 70m ² | Clotet Area: 85m ² | Clotet Area: 72m ² |
| Terrace Area: 5.5m ² | Terrace Area: 5m ² | Terrace Area: 5.5m ² |



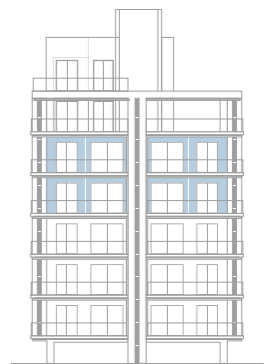
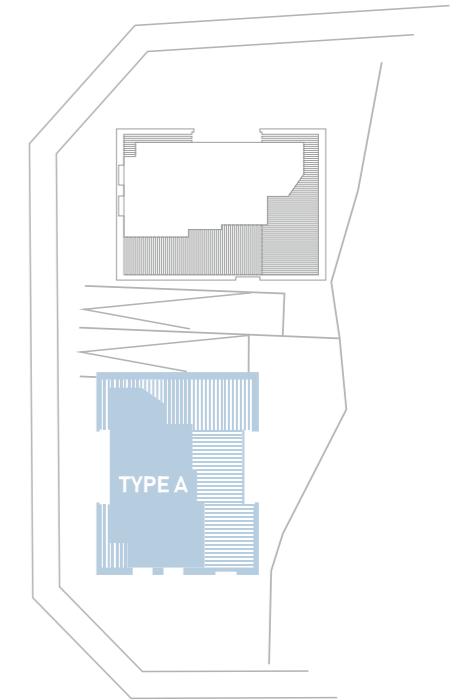
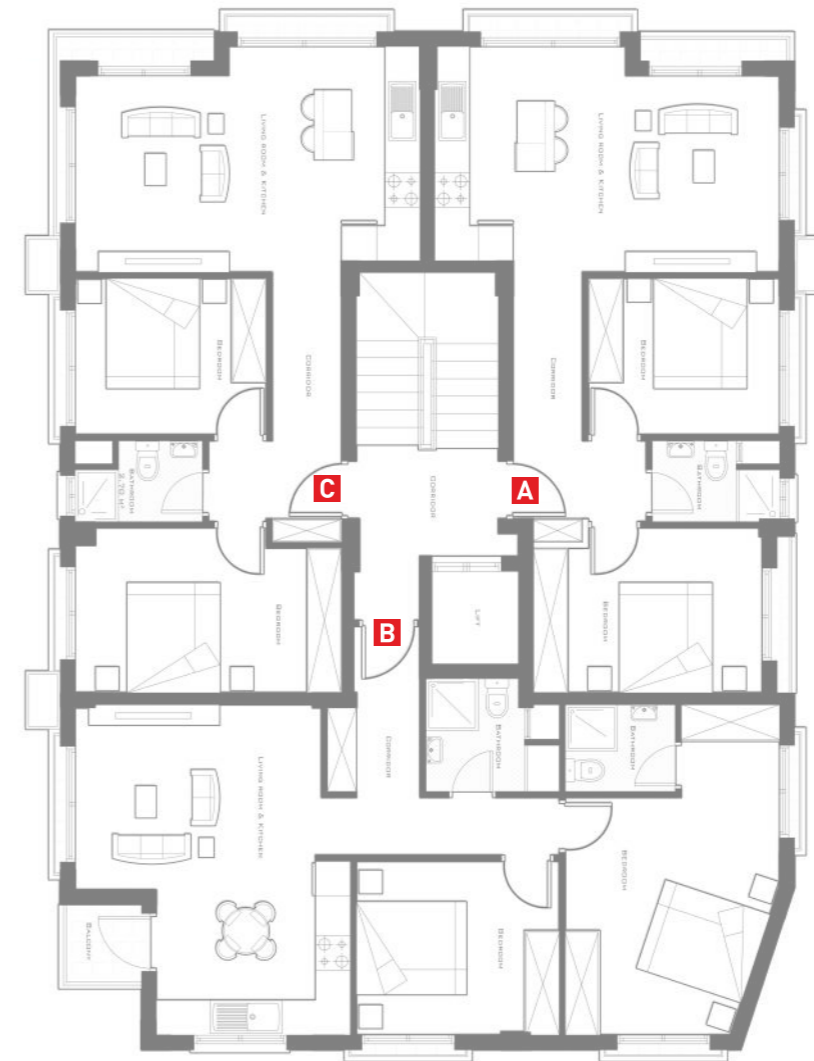


- elite -

APARTMENTS

TYPE A

- A** 2+1Flat: 10-13
Closet Area: **70m²**
Terrace Area: **5.5m²**
- B** 2+1Flat: 11-14
Closet Area: **85m²**
Terrace Area: **5m²**
- C** 2+1Flat: 12-15
Closet Area: **72m²**
Terrace Area: **5.5m²**



-elite-

APARTMENTS

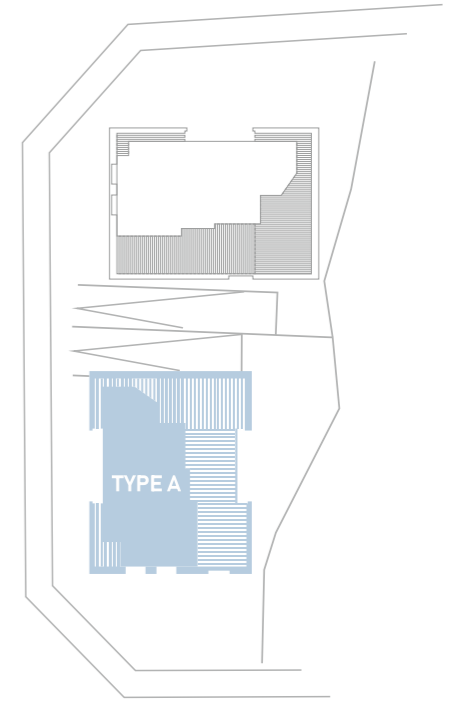
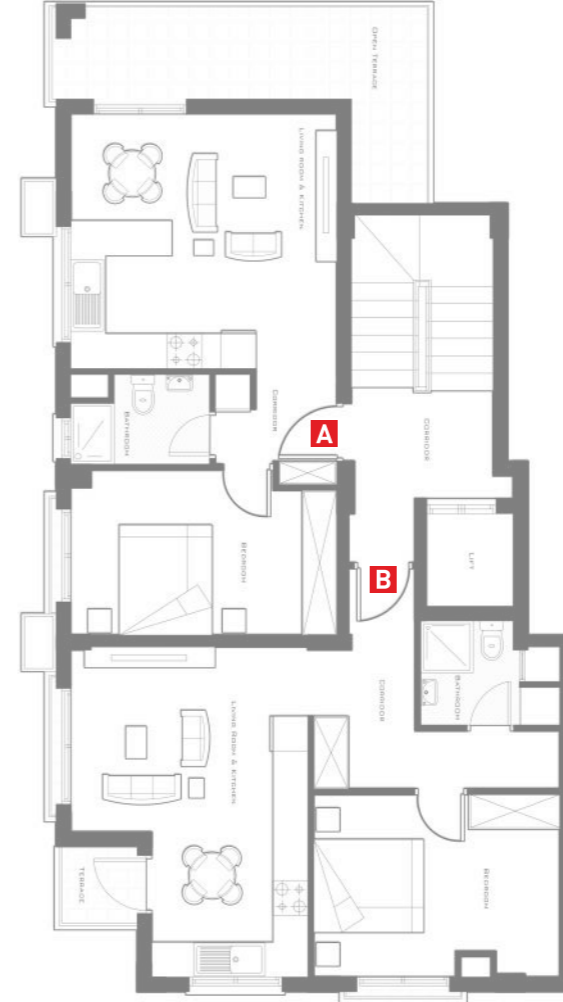
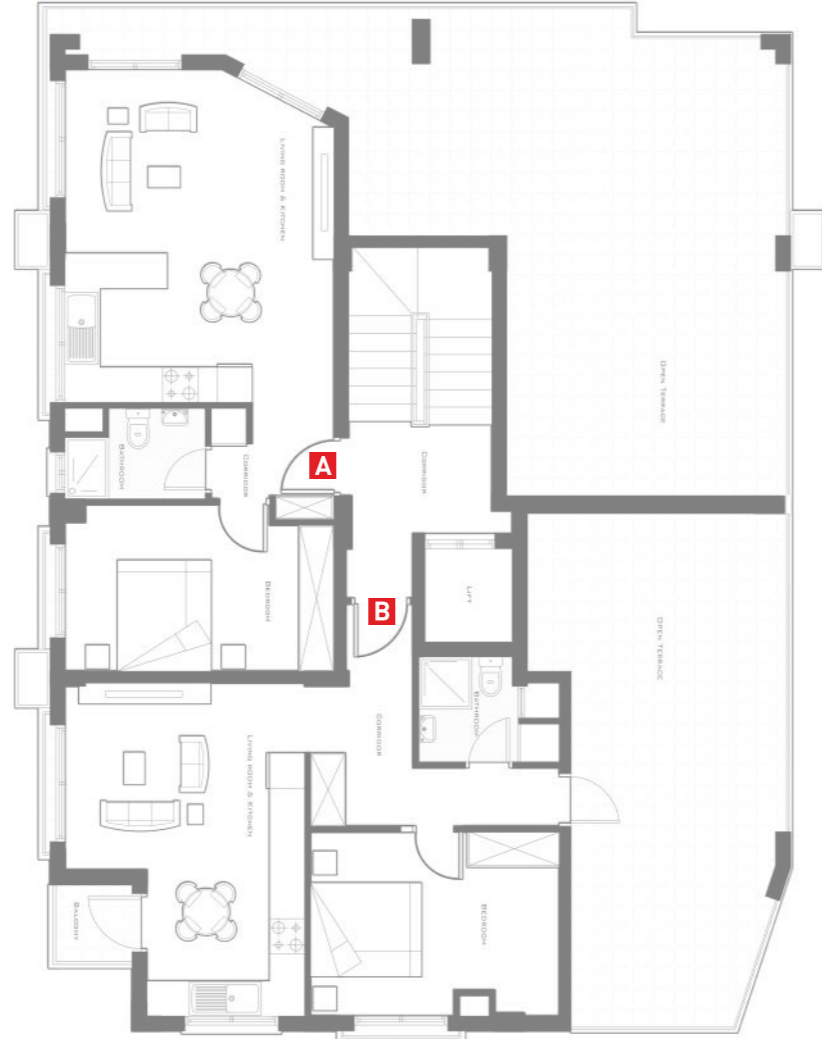
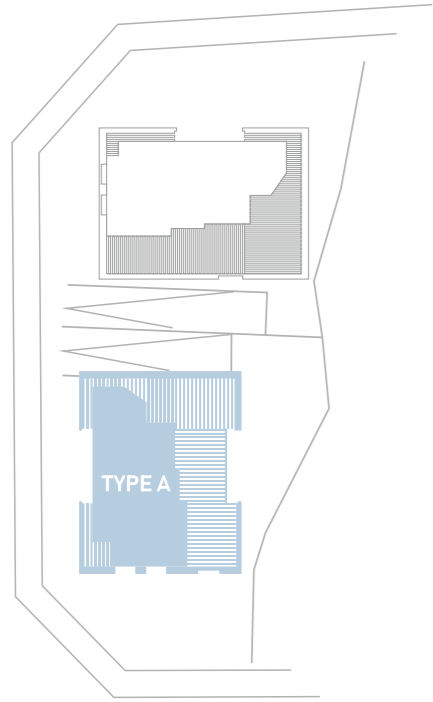
TYPE A

A 1+1Flat: 17
 Closet Area: **66m²**
 Terrace Area: **58m²**

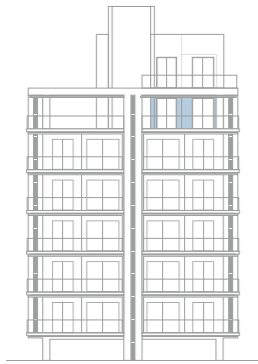
B 1+1Flat: 16
 Closet Area: **66m²**
 Terrace Area: **40m²**

A 1+1Flat: 19
 Closet Area: **60m²**
 Terrace Area: **17m²**

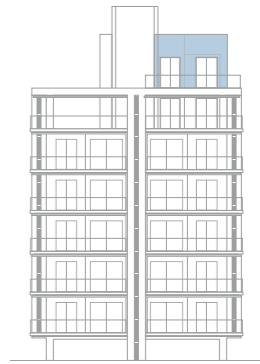
B 1+1Flat: 18
 Closet Area: **66m²**
 Terrace Area: **4m²**



Type A 6. Floor Plan



Type A 7. Floor Plan



-elite-
APARTMENTS



TYPE B

-elite-

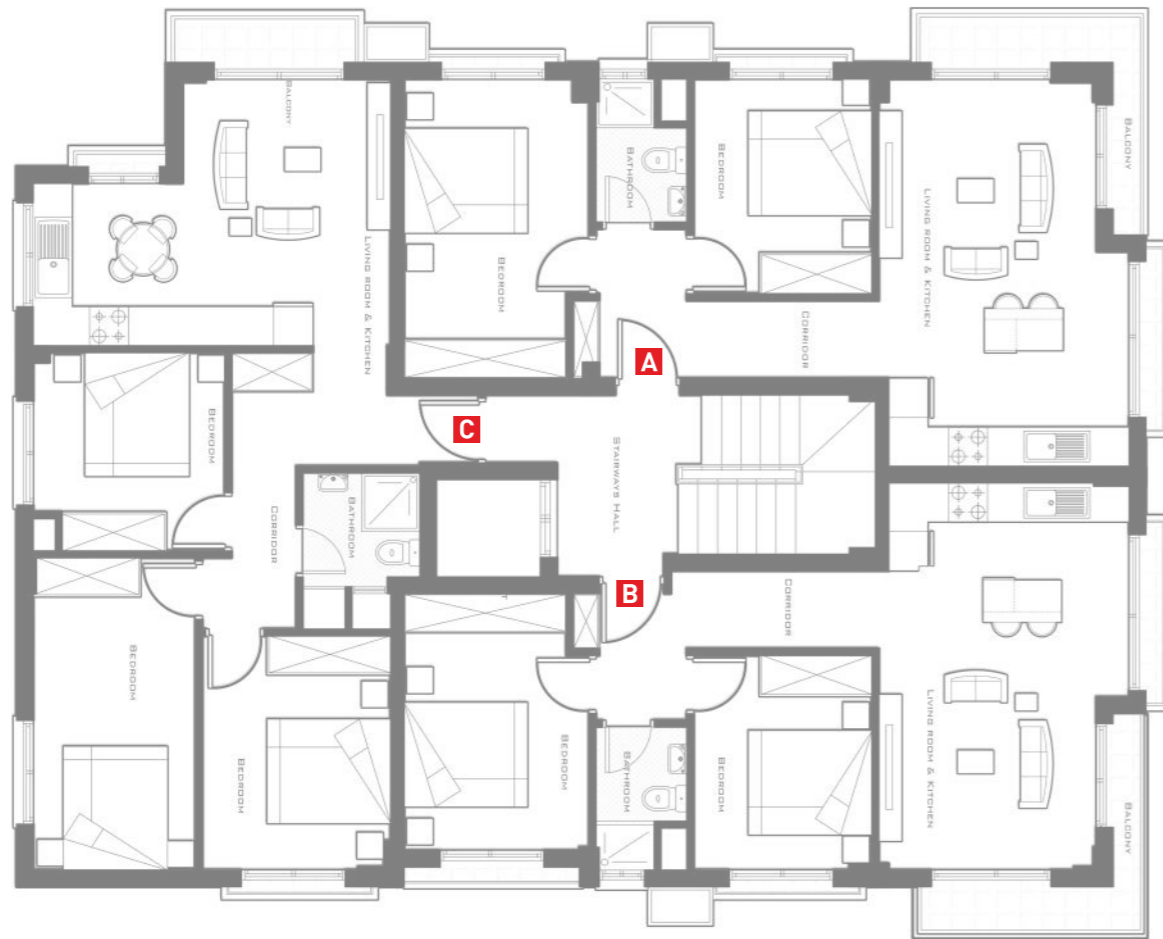
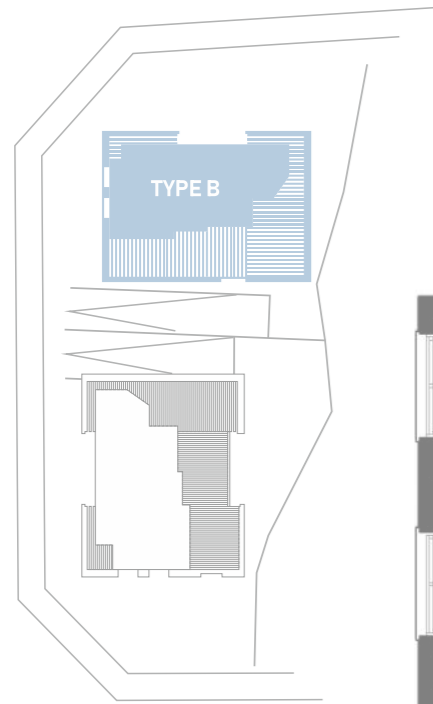
APARTMENTS

TYPE B

A 2+1Flat: 3-6-9
 Closet Area: 72m²
 Terrace Area: 7m²

B 2+1Flat: 1-4-7
 Closet Area: 70m²
 Terrace Area: 7m²

C 3+1Flat: 2-5-8
 Closet Area: 85m²
 Terrace Area: 5m²



Type B 1.2.3. Floor Plan

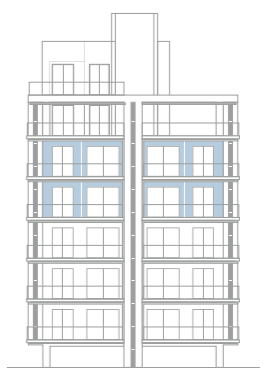
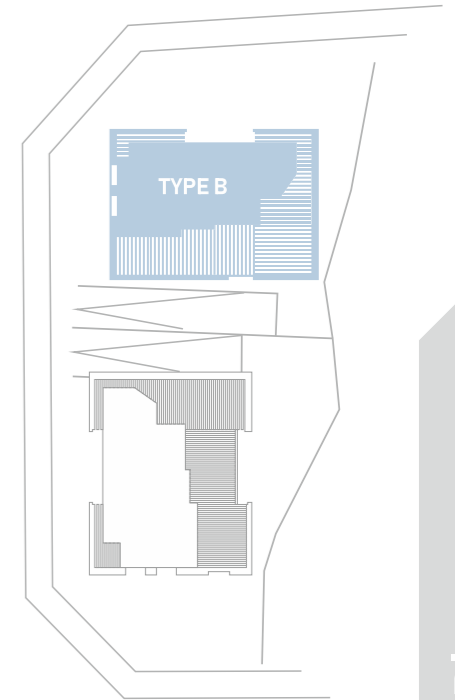
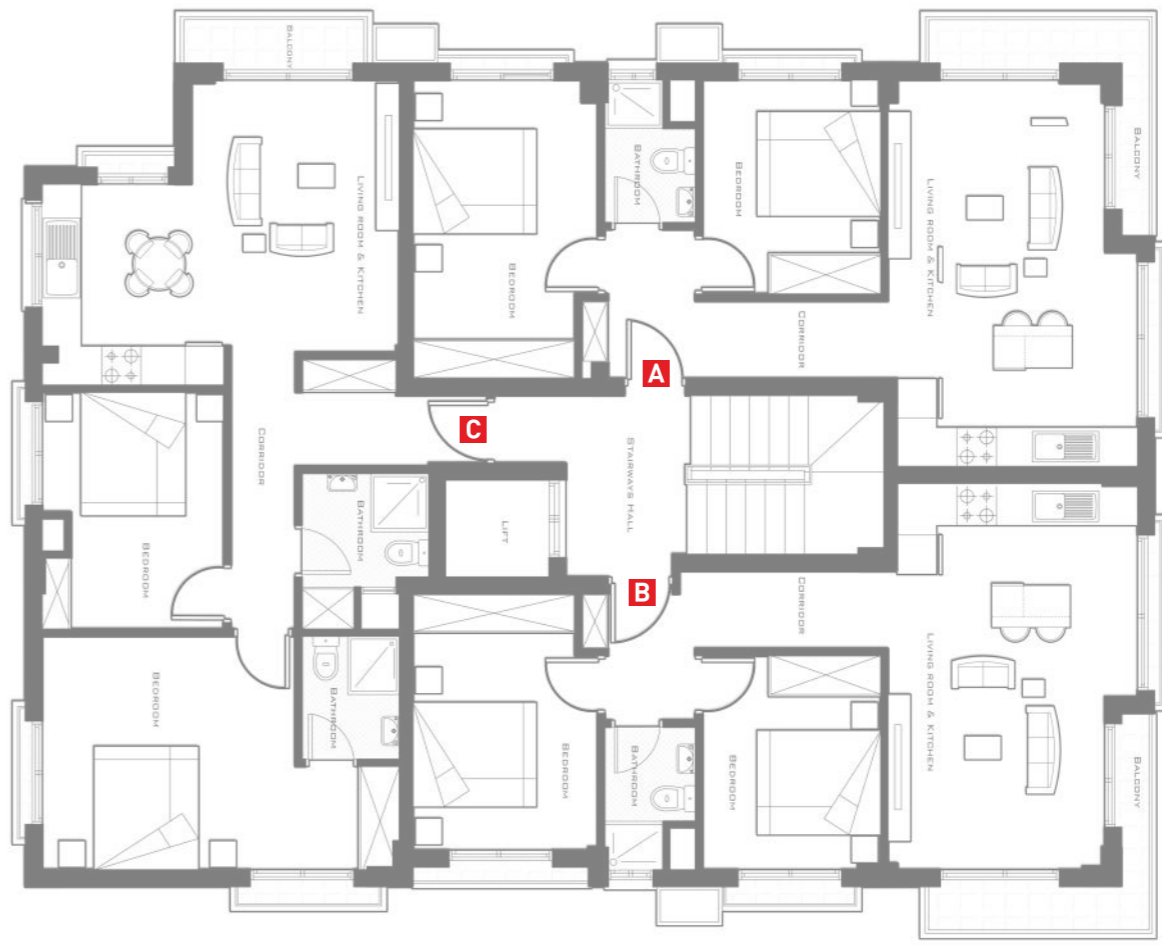


- A** 2+1Flat: 12-15
 Closet Area: **72m²**
 Terrace Area: **7m²**
- B** 2+1Flat: 10-13
 Closet Area: **70m²**
 Terrace Area: **7m²**
- C** 2+1Flat: 11-14
 Closet Area: **85m²**
 Terrace Area: **5m²**

- elite -

APARTMENTS

TYPE B



Type B 4.5. Floor Plan

- elite -

APARTMENTS

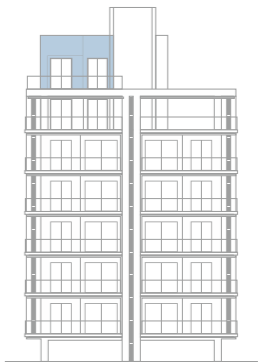
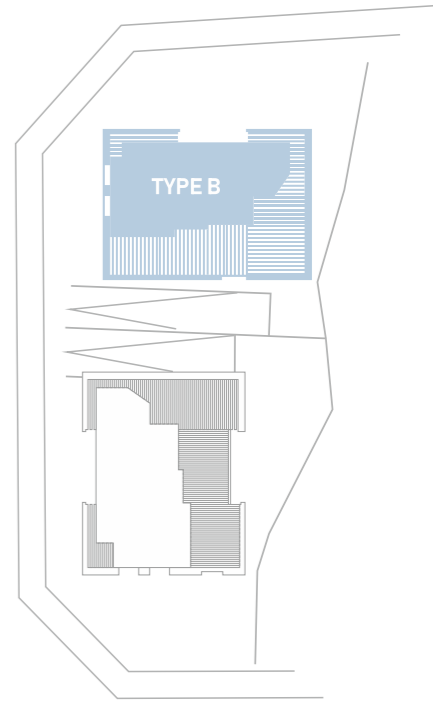
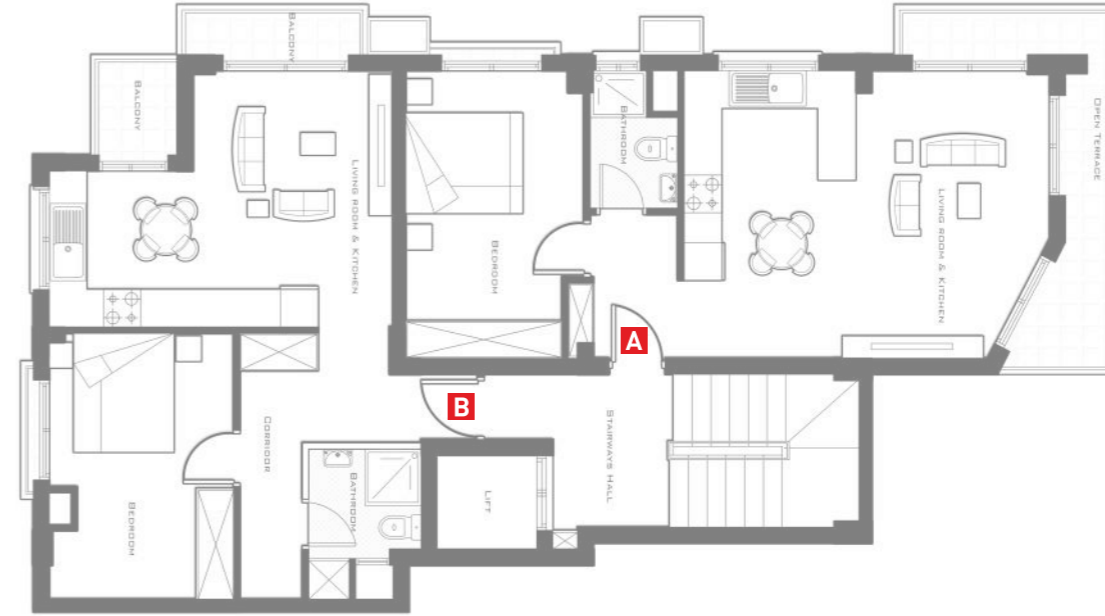
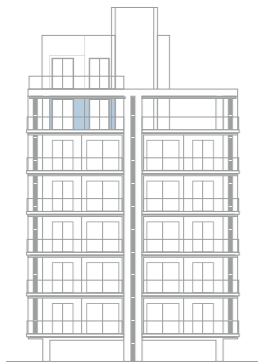
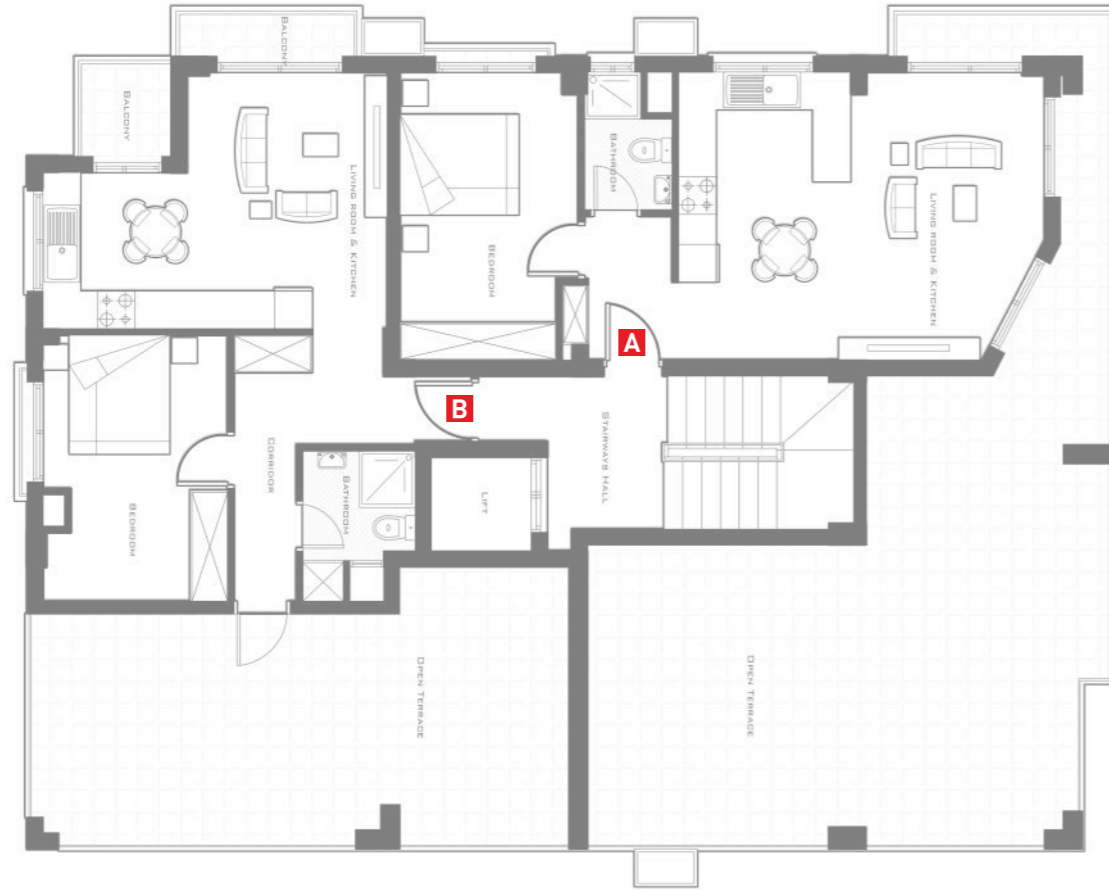
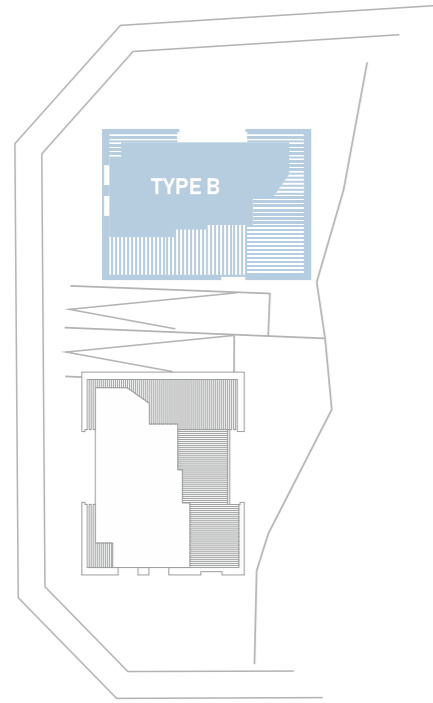
TYPE B

A 2+1 Flat: 17
 Closet Area: 67m²
 Terrace Area: 65m²

B 1+1 Flat: 16
 Closet Area: 64m²
 Terrace Area: 45m²

A 1+1 Flat: 19
 Closet Area: 67m²
 Terrace Area: 11m²

B 1+1 Flat: 18
 Closet Area: 64m²
 Terrace Area: 7m²



Type B 6. Floor Plan

Type B 7. Floor Plan

A man and a woman are in a professional setting, possibly an office or a meeting room. The man, on the left, is wearing a blue sweater over a light blue shirt. The woman, on the right, is wearing a light blue button-down shirt. They are both looking at a tablet computer that the woman is holding. The man is pointing at the screen. In the background, there are blurred office elements, including a computer monitor and a person's face. The overall atmosphere is professional and collaborative.

Specification

- Exclusive Location
- Attractive Price
- Long term payment options
- 5 year structural warranty
- Rental income warranty
- Sea & Mountain views
- Walking distance to all local amenities
- Close to University
- Open Plan
- Double glazing
- Large balconies
- Elevator
- Intercom
- Luxury specification as standard
- Close to highway
- 400 meters to central bus terminal
- Penthouses available



Carrington
LUXURY VILLAS & APARTMENTS
GROUP

Deniz Sihir (Sea Magic) Esentepe
Kyrenia North Cyprus

Office: +90 533 889 2244
Sales: +90 533 881 2244

sales@carringtoncyprus.com
www.carringtoncyprus.com