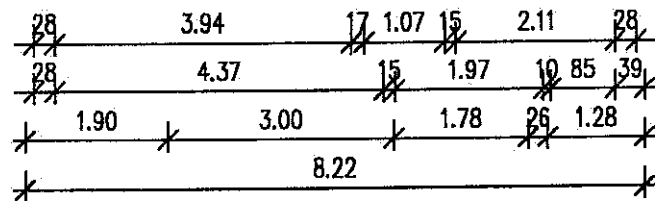
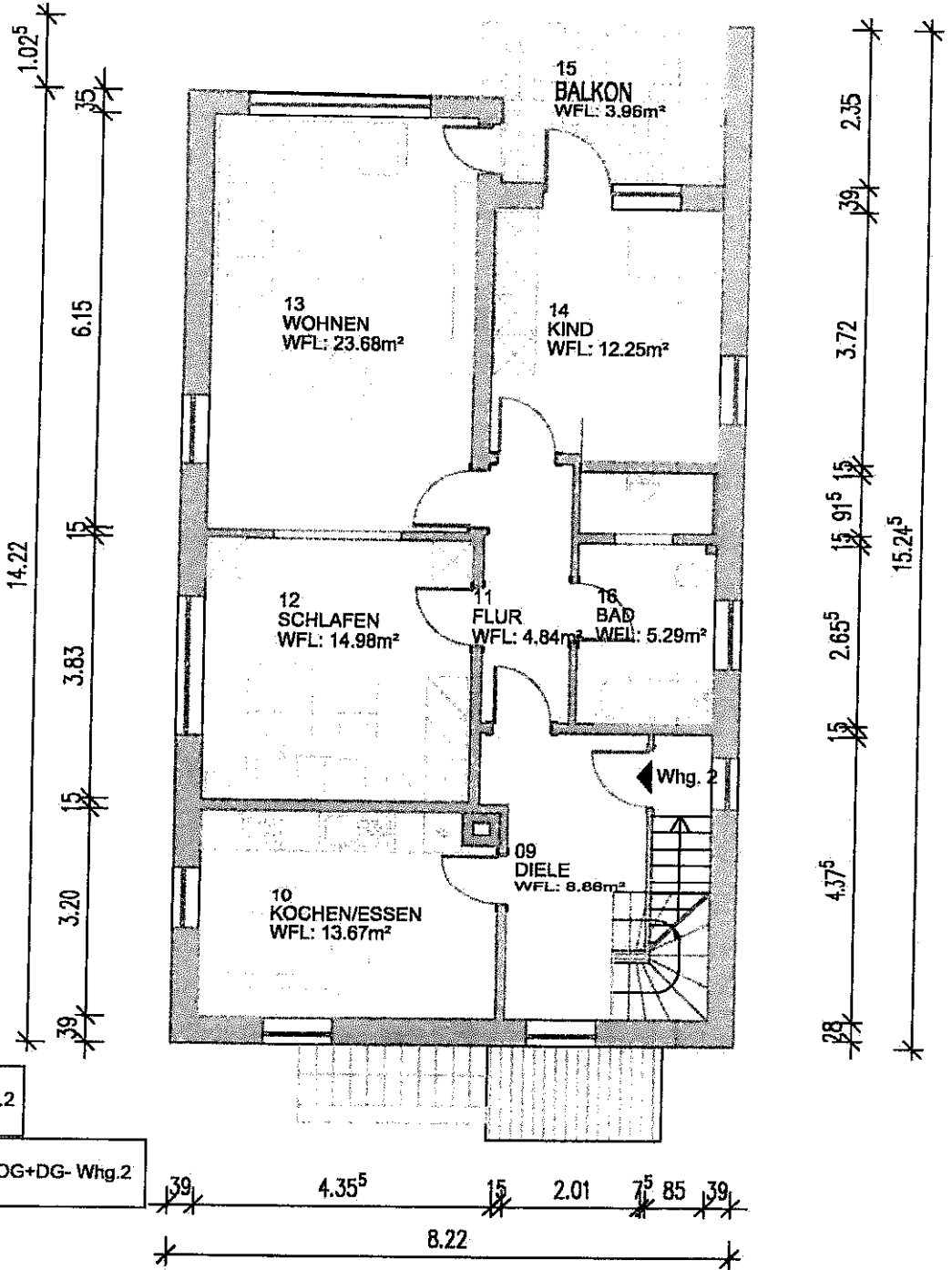
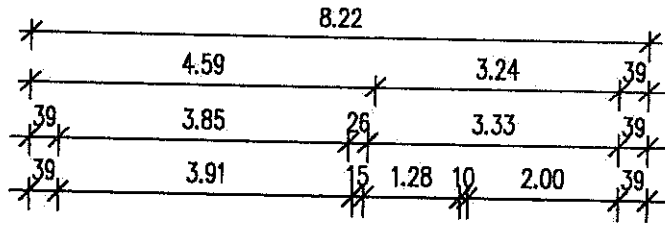


01
Wohnfläche EG- Whg.1
WFL: 86.34m²

EG



Bestandsplan EG, Maßstab 1:100
Wohnhaus in Leonbergerstr. 10
7 3 4 4 1 B o p p i n g e n

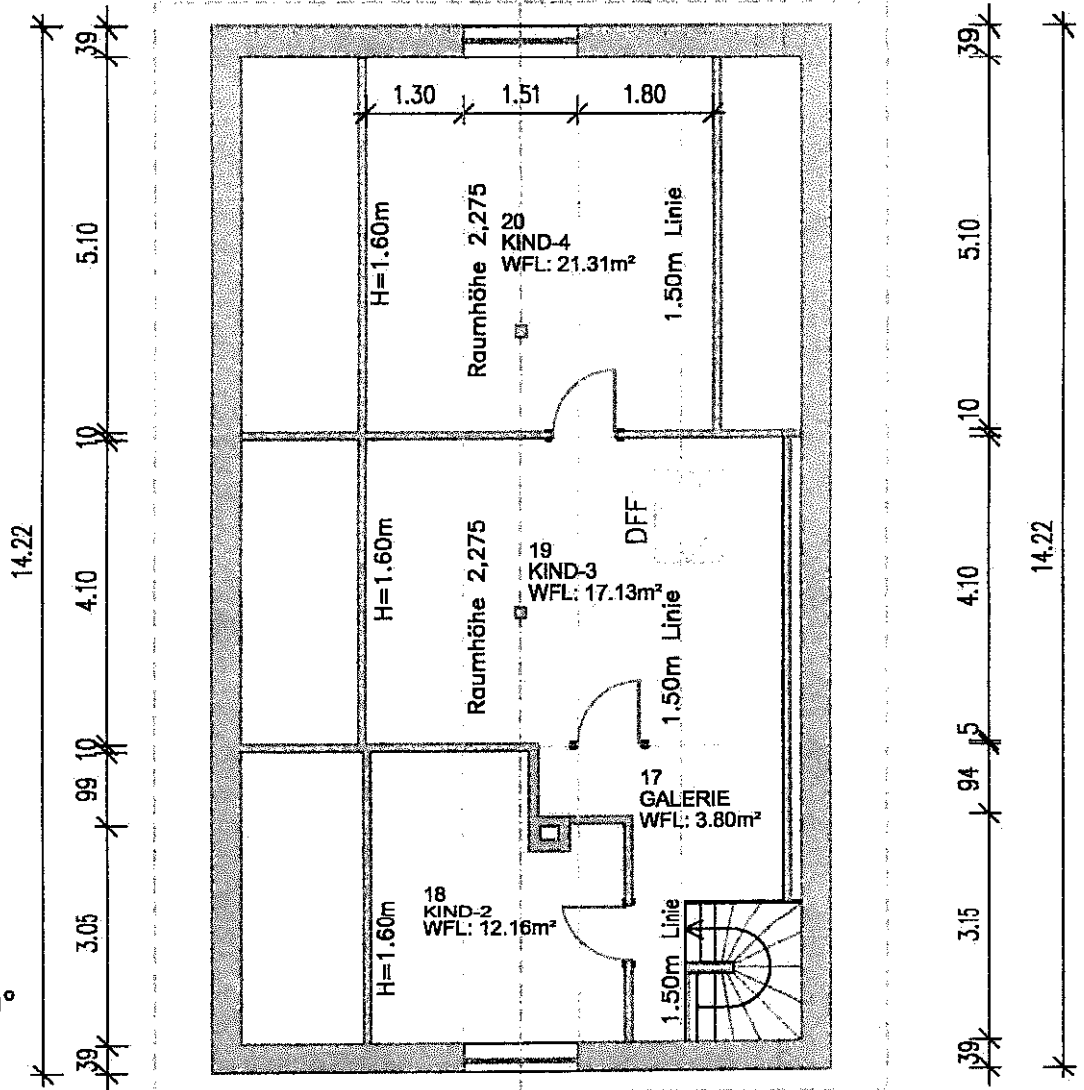
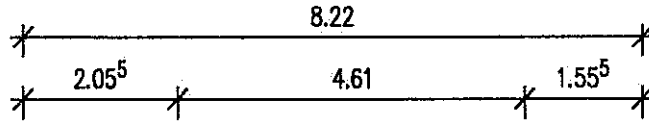


02
Wohnfläche OG- Whg.2
WFL: 87.53m²

04
Gesamt Wohnfläche OG+DG- Whg.2
WFL: 141.92m²

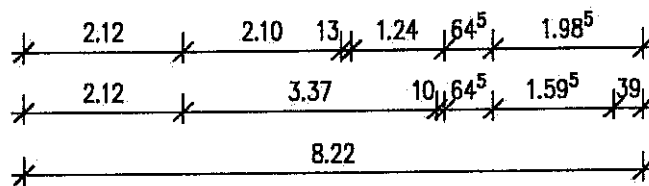
1-OG

Bestandsplan 1-OG, Maßstab 1:100
Wohnhaus in Leonbergerstr. 10
7 3 4 4 1 B o p f i n g e n

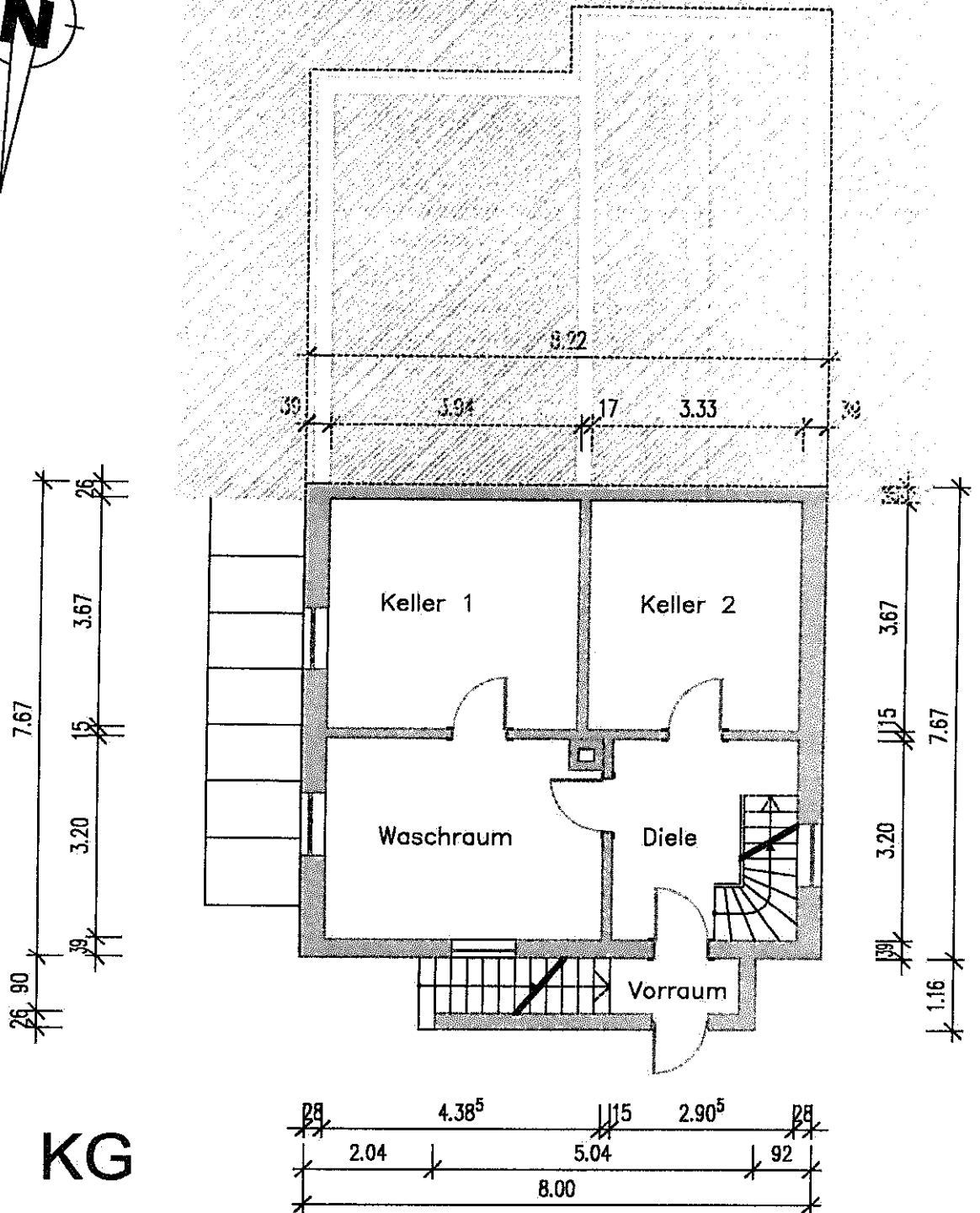


03
Wohnfläche DG- Whg.2
WFL: 54.40m²

DG



Bestandsplan DG, Maßstab 1:100
Wohnhaus in Leonbergerstr. 10
7 3 4 4 1 B o p f i n g e n



KG

Bestandsplan KG, Maßstab 1:100
 Wohnhaus in Leonbergerstr. 10
 7 3 4 4 1 B o p f i n g e n