

Whg. Nr. 20

Bad

4,77 m²

Flur

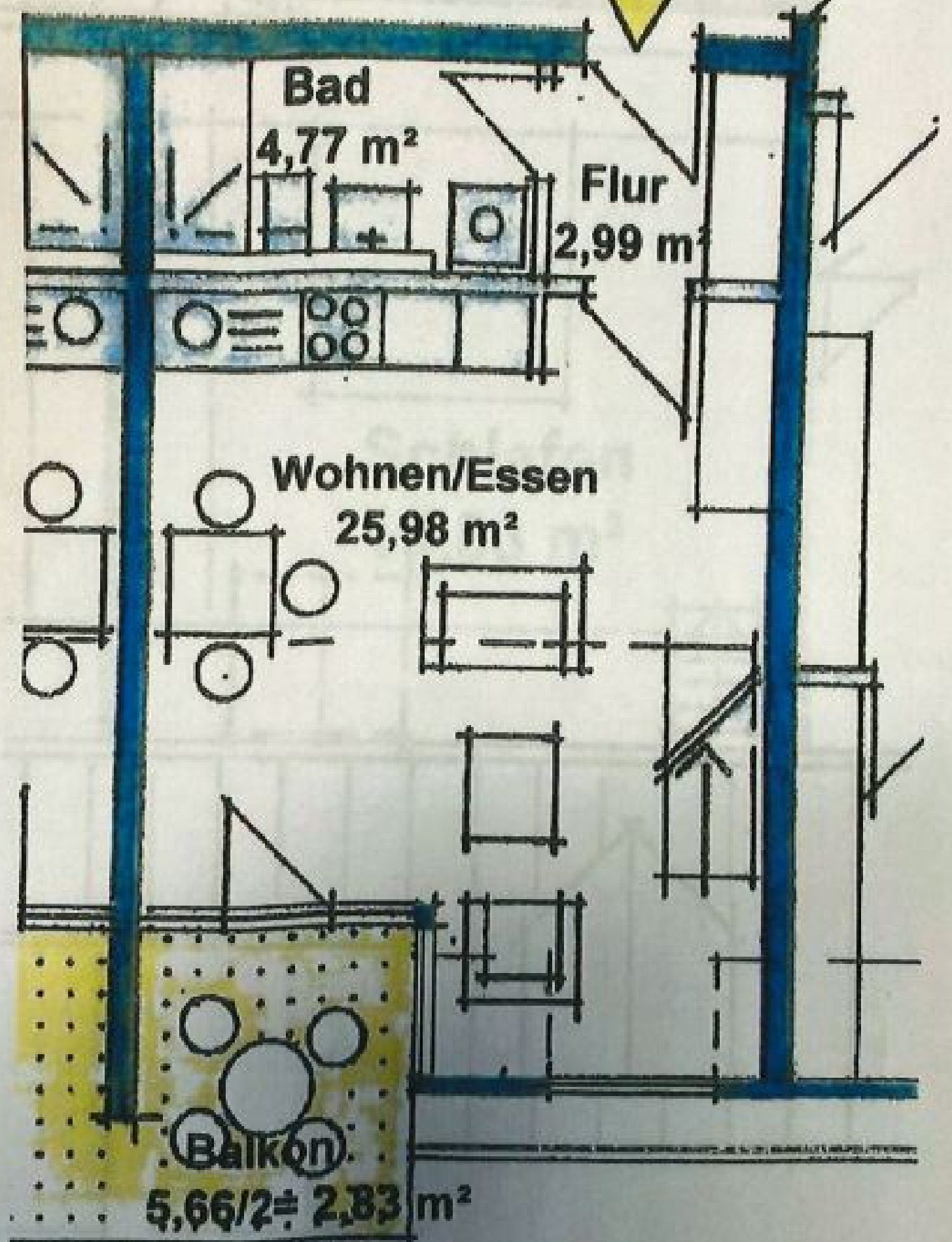
2,99 m²

Wohnen/Essen

25,98 m²

Balkon

5,66/2 = 2,83 m²





A hand-drawn architectural floor plan of a bedroom, labeled 'Schlafen' with an area of 19,83 m². The drawing is on a grid background. The room is roughly rectangular. At the top left, there is a staircase with a diagonal line indicating the direction of travel. A thick blue line runs along the top and right walls, possibly representing a structural element or a specific wall type. In the center of the room, there is a large rectangular area, likely a bed, with a yellowish stain. Below the bed, there is a row of three small rectangular shapes, possibly representing a desk or a row of chairs. To the right of these shapes, there is a staircase with a triangular roof structure, possibly leading to an upper level. At the bottom of the room, there is a large triangular structure, possibly a wardrobe or a large piece of furniture. The drawing is simple and appears to be a preliminary sketch.

Schlafen
19,83 m²