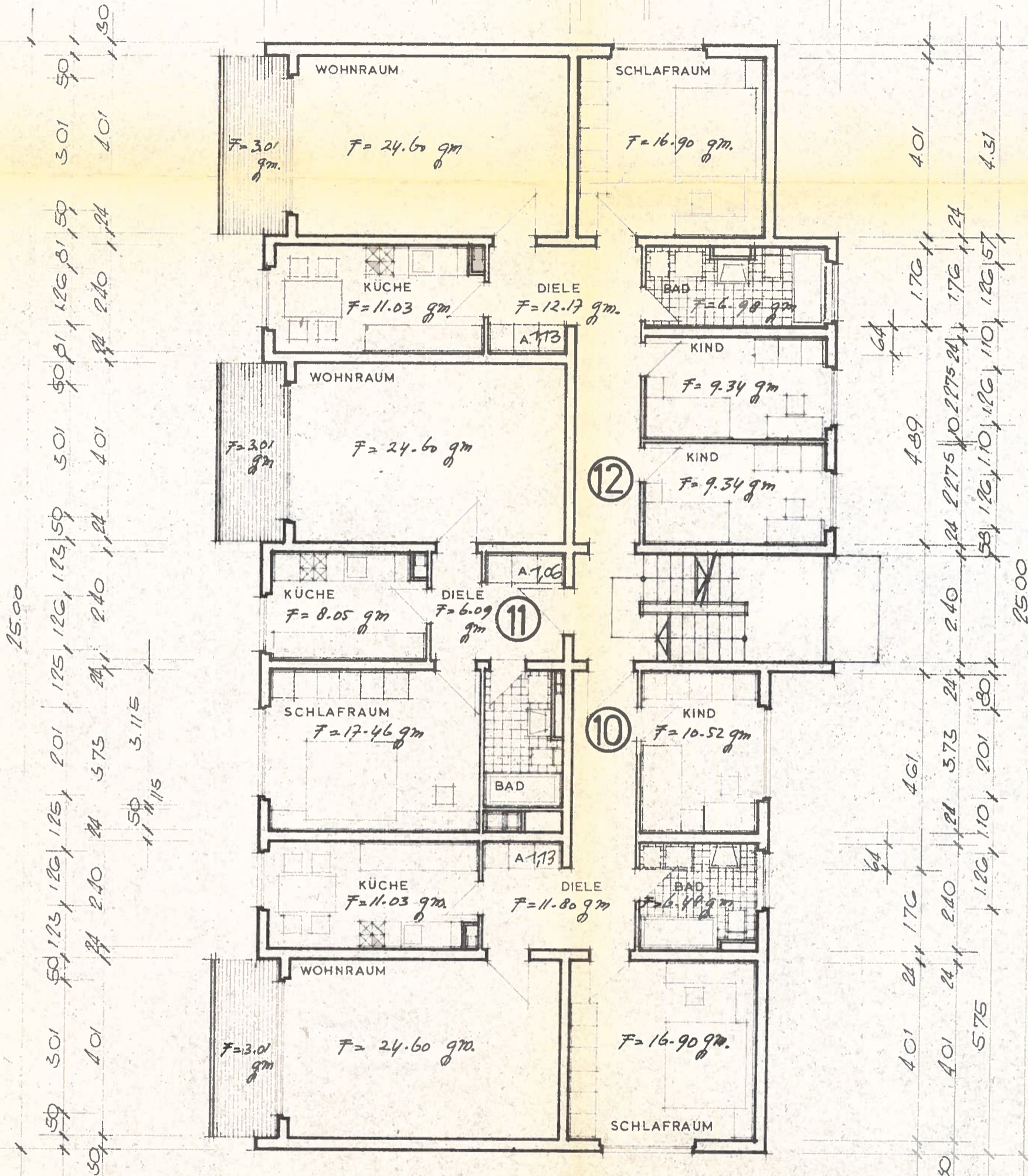


12.70
 1.50 24 6.01 24 4.13 59 1.23
 30 3.35 10 3.00 24 5.71
 1.30 10 4.01 30



25.00

50 1.50 24 6.01 24 4.13 59 1.23
 30 3.35 10 3.00 24 5.71
 1.30 10 4.01 30

4.01 4.31
 1.70 1.76 1.24
 2.40 2.275 10.2275 24 1.76 1.24
 58 1.26 1.10 1.26 1.10 1.26 57
 25.00

30 4.59 10 1.76 24 1.50 10 2.73 30
 4.59 10 3.30 10 2.73
 1.50 24 6.01 24 4.13 30
 7.71 2.01 1.67
 11.42