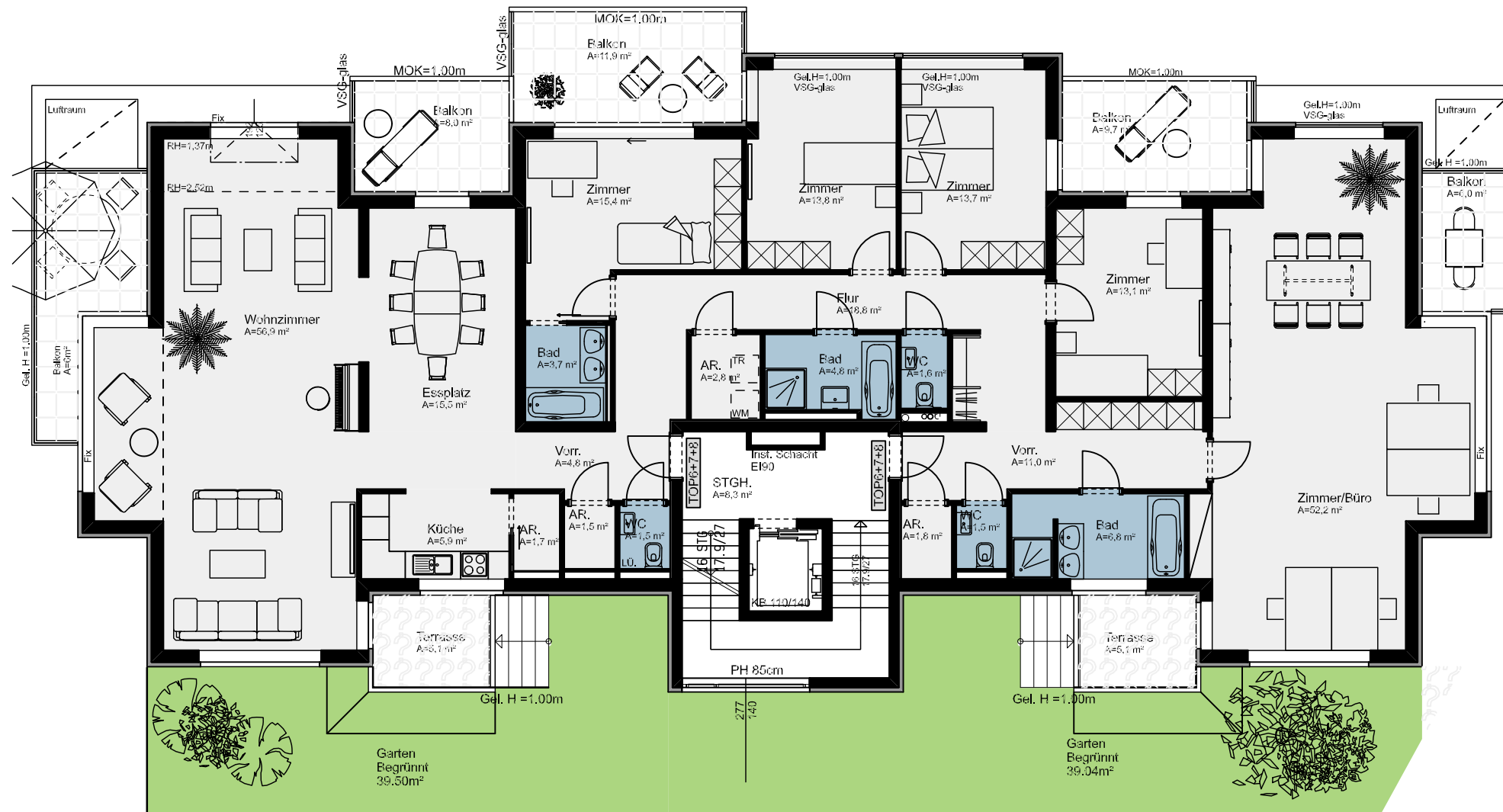




Donauwarte Steig 14, 1190 Wien

TOP 6 + 7 + 8 : 248,80 m²



Vorraum	4,80m ²
WC	1,50m ²
AR	1,50m ²
AR	1,70m ²
Küche	5,90m ²
Esszimmer	15,50m ²
Wohnzimmer	56,90m ²
Terrasse	5,10m ²
Balkon	6,00m ²
Balkon	9,70m ²
Zimmer	15,40m ²
Balkon	11,90m ²
BAD	3,70m ²
AR	2,80m ²
Flur	18,80m ²
Zimmer	13,80m ²
Zimmer	13,70m ²
BAD	4,80m ²
WC	1,60m ²
Zimmer	13,10m ²
Balkon	9,70m ²
Vorraum	11,00m ²
AR	1,80m ²
WC	1,50m ²
BAD	6,80m ²
Terrasse	5,10m ²
Zimmer/Büro	52,20m ²
Balkon	6,00m ²
Garten	90,81m ²

