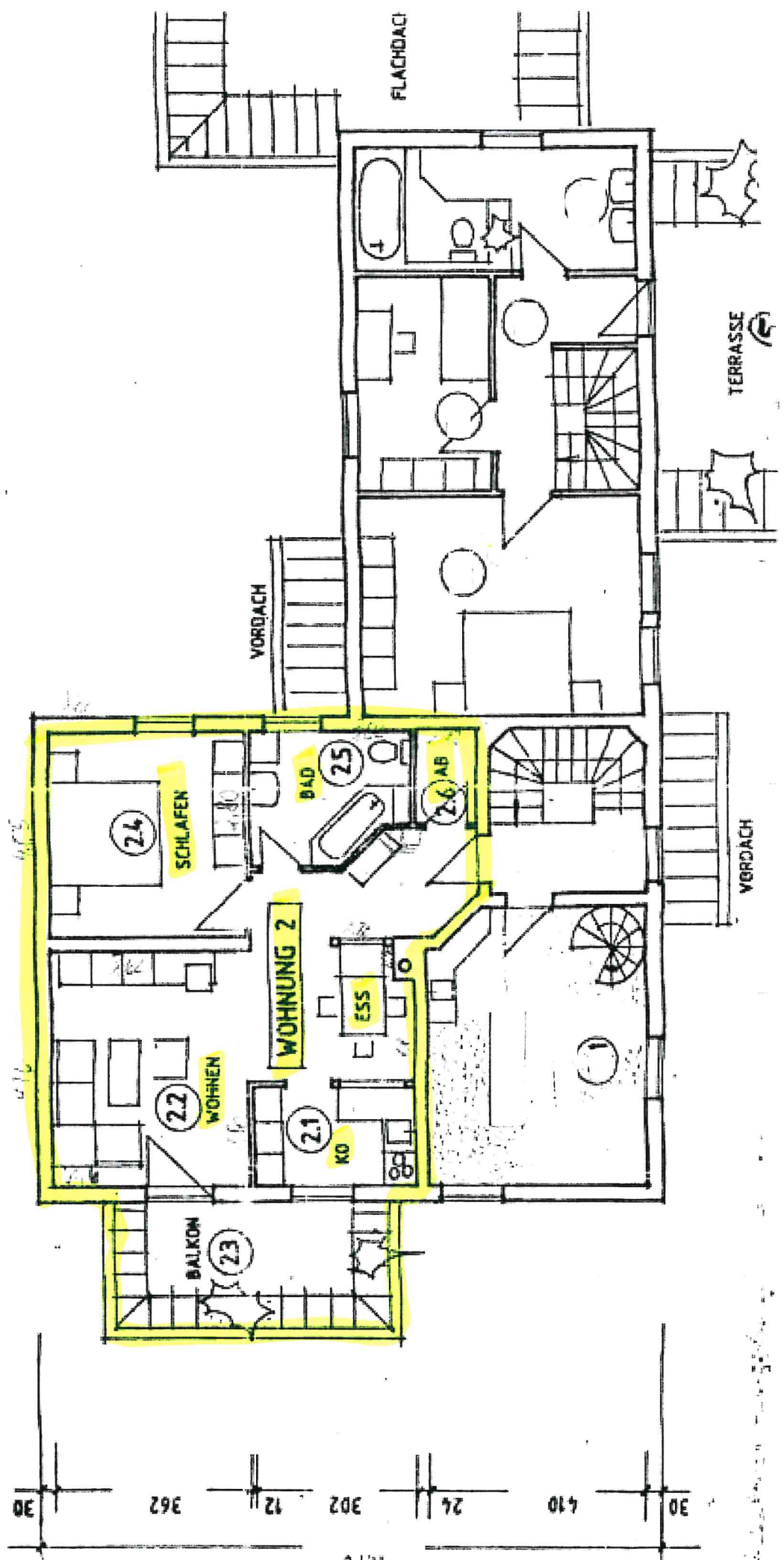
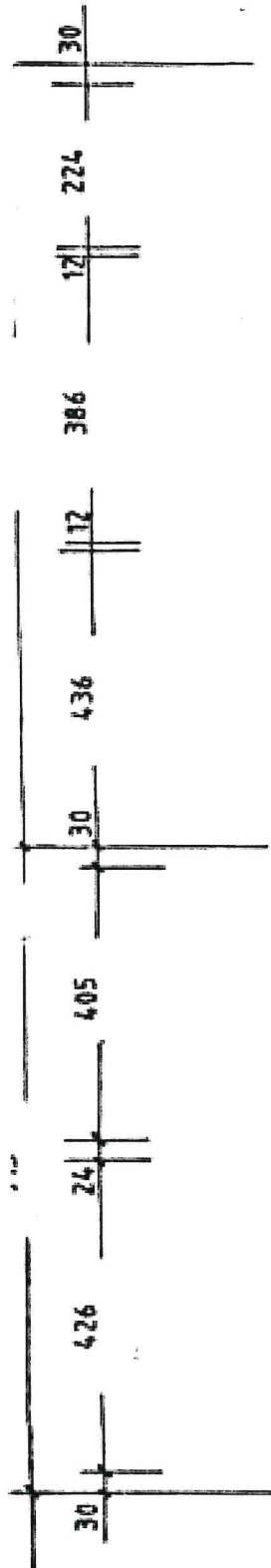


**Wohnungsbau
OBERGESCHOSS**



Wohnflächenberechnung

OG - Wohnung

Wohnen	3.62 x 4.26	15.42
Kochen	1.80 x 3.02	5.44
Essen	2.48 x 3.14	7.79
	1.50 x 0.12	0.18
	- 0.60 x 0.40	- 0.24
Schlafen	4.05 x 3.62	14.66
Bad	2.81 x 1.70	4.78
	0.75 x 2.30 i.M.	1.73
	0.50 x 1.80	0.90
Abstellraum	1.76 x 1.12	1.97
Gang	1.70 x 1.12	1.90
	0.75 x 1.65 i.M.	1.24
	1.74 x 2.17	3.78
	- 0.80 x 0.80/2	- 0.32
		<hr/>
		59.23 qm
	./. 3 % Putz	1.78
		<hr/>
Balkon	3.20 x 1.50/2	57.45 qm
		2.40
		<hr/>
		59.85 qm