

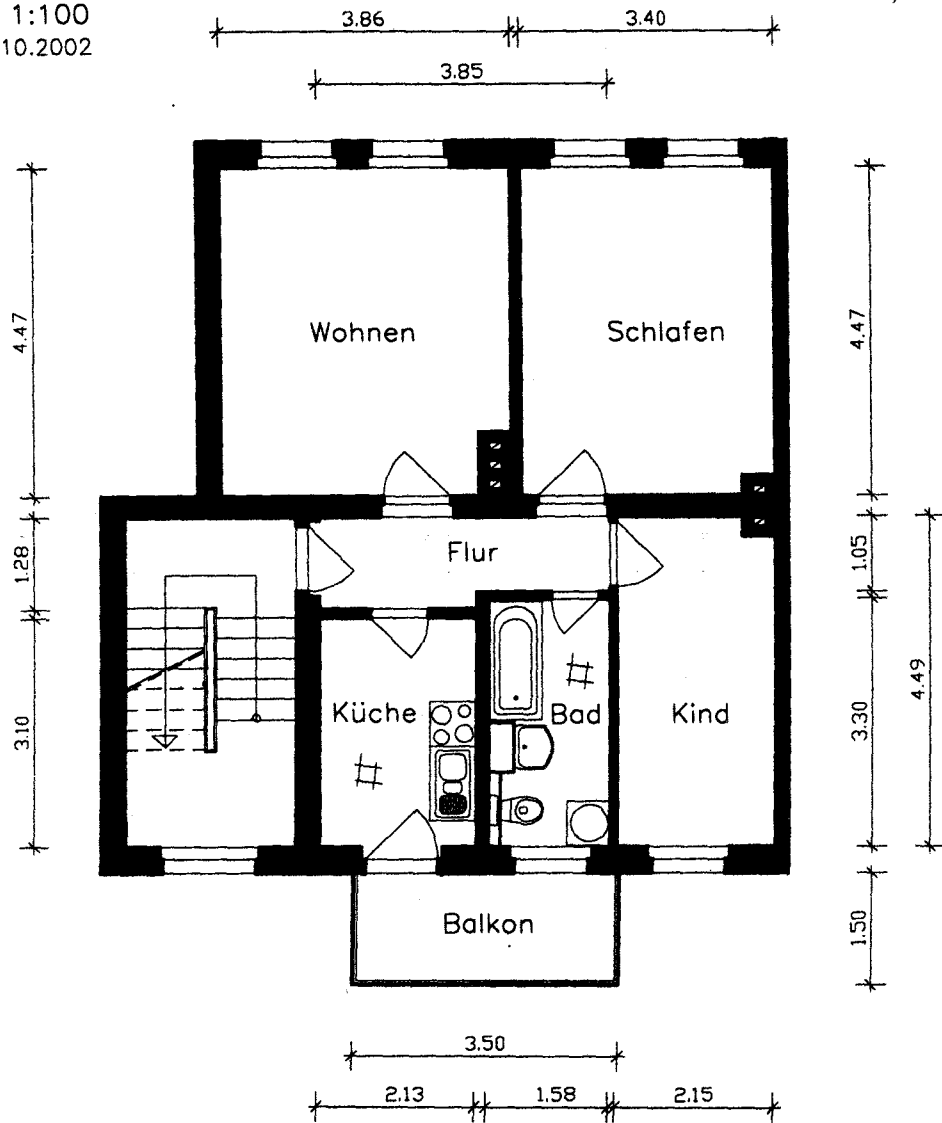
Nordring 60

1.Obergeschoß/rechts

Dreiraumwohnung

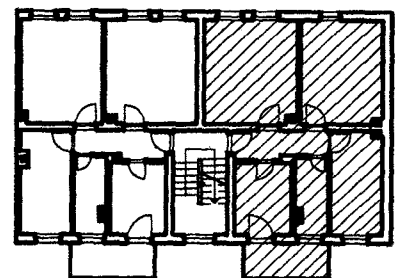


Maßstab 1:100
Stand: 18.10.2002



Wohnen	=	17,06m ²
Schlafen	=	15,07m ²
Kind	=	9,58m ²
Küche	=	6,59m ²
Bad	=	5,05m ²
Flur	=	4,53m ²
Balkon	=	2,62m ² (5,25m ²)

4



Wohnfläche = 60,50m²
Nutzfläche = 63,13m²