

4,31

30

4,01

4,01

24

6,01

4,71

17,11

6,01

1,12

24

2,01

2,26

1,51

30

2

10/15

+615,50

30

1,50

ÜBERD.

TERRASSE

$1/2 = 4,50$

2

TERR

$1/4 = 2,71 m^2$

ARBEITSZI

$24,10 m^2$

2

BIBLIOTHEK

$28,60 m^2$

2

15x 25/18x

WINDF.

$3,26 m^2$

GARD.

$3,21 m^2$

WC

2,45

3,88

KÜCHE

9,26

FLUR

$4,93 m^2$

+3,25

2

1,62

11,8

2,38

7

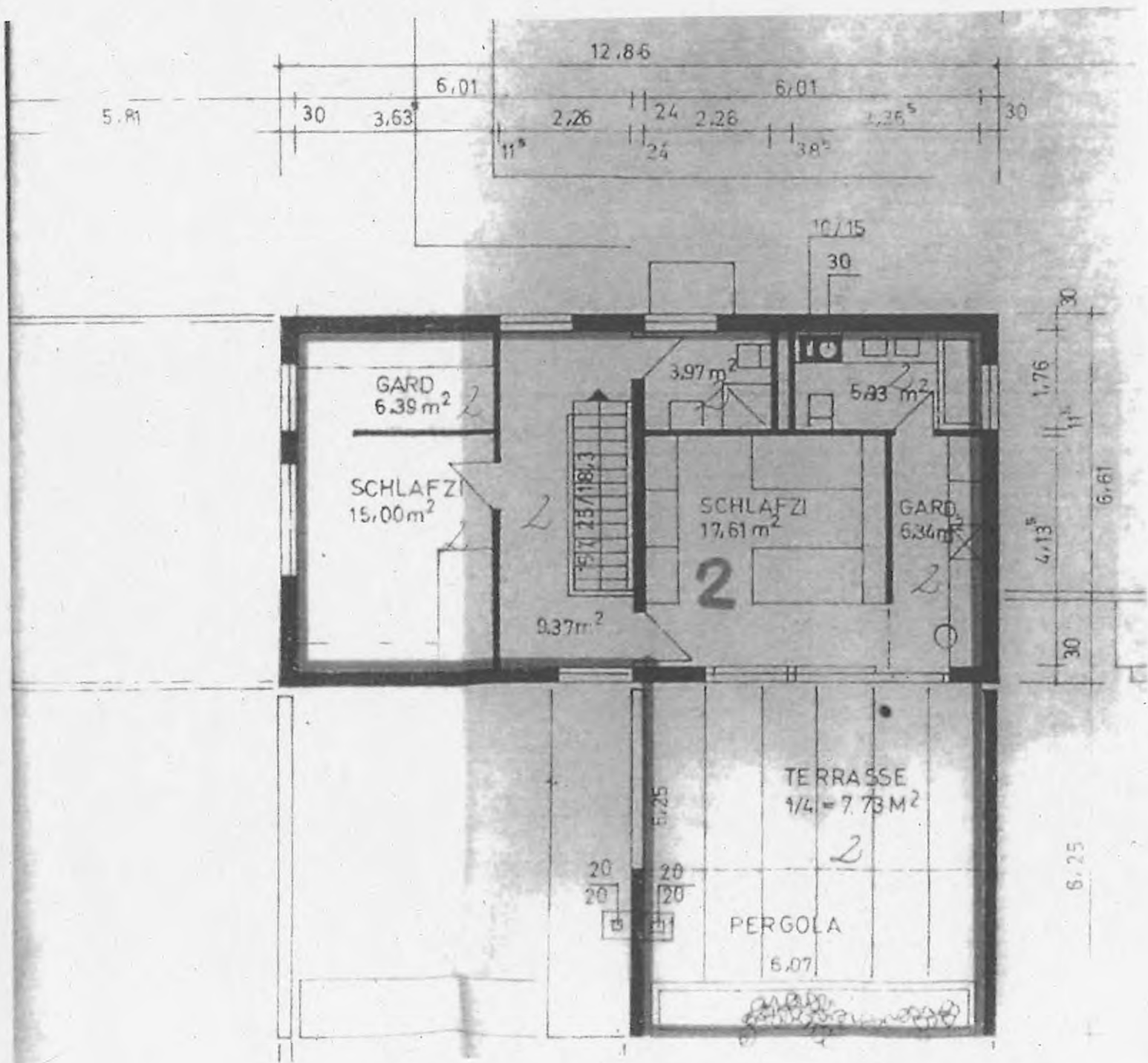
2,54

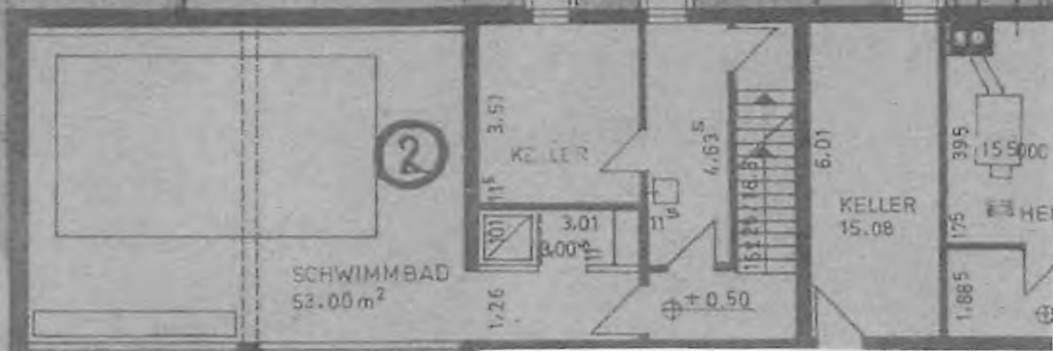
12,86

11,5

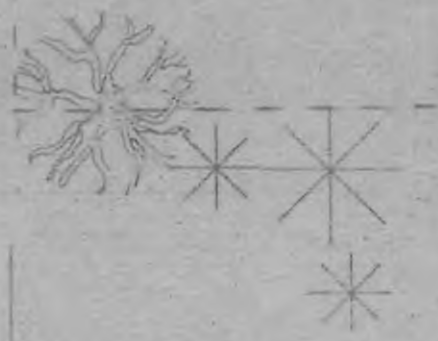
5,01

30





Gartenanteil  
W 2



8.56