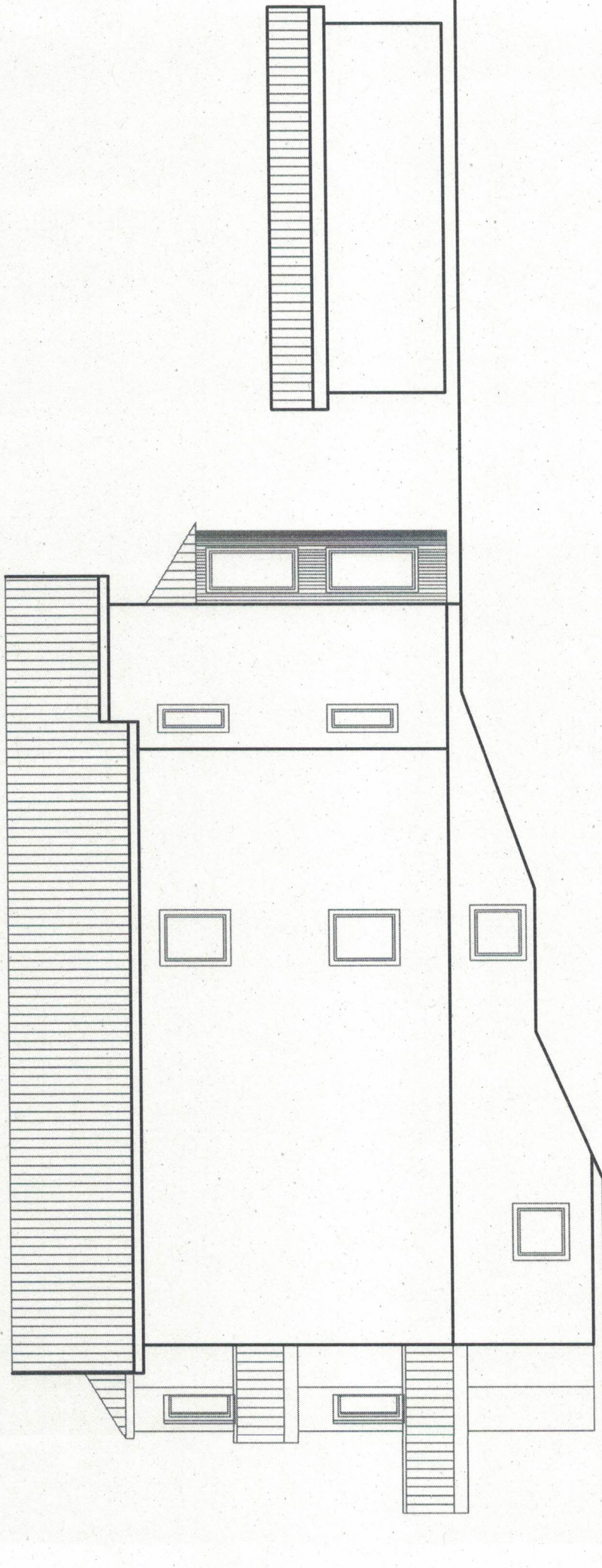
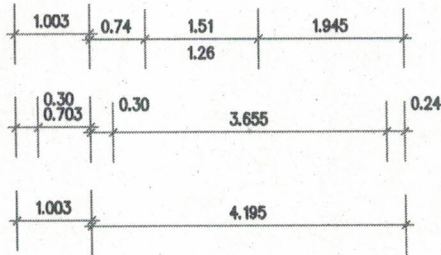
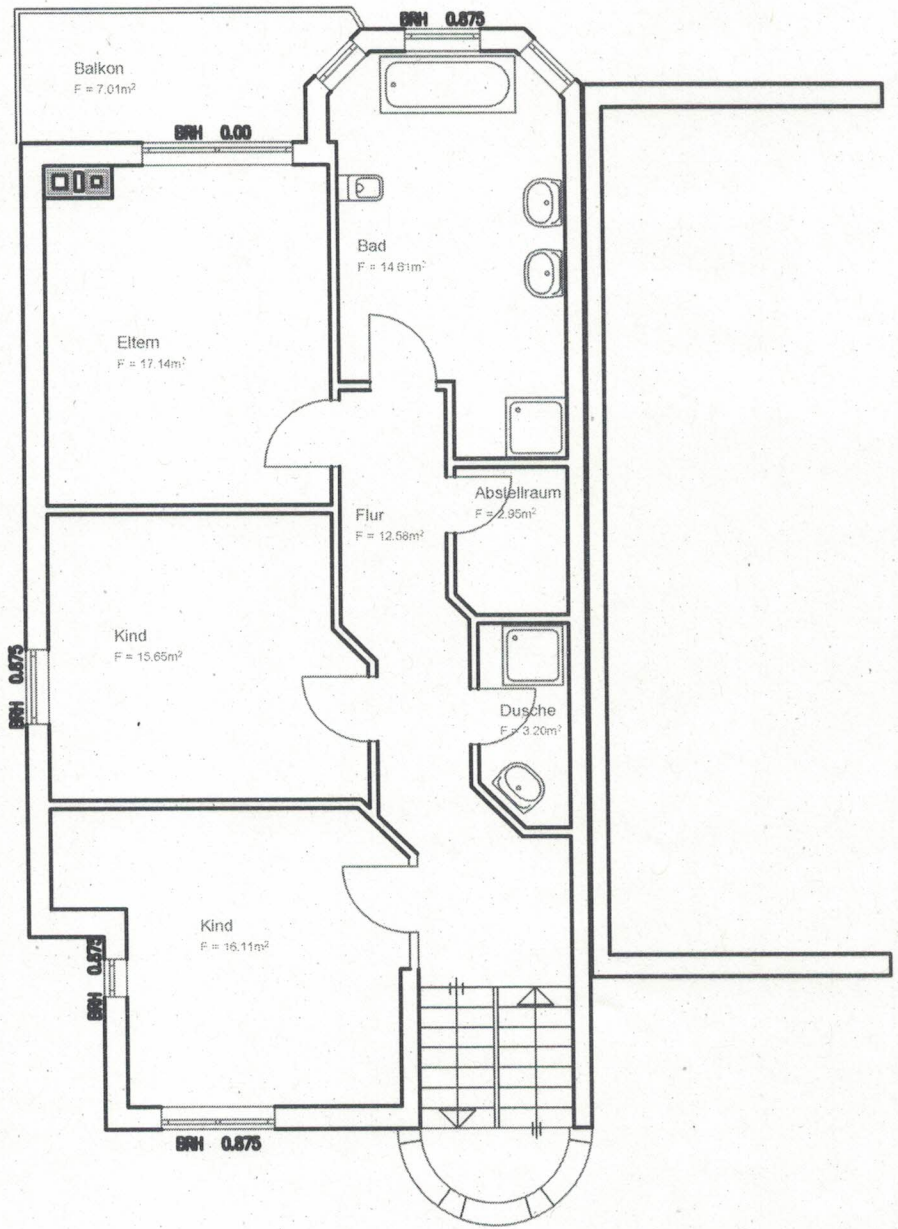
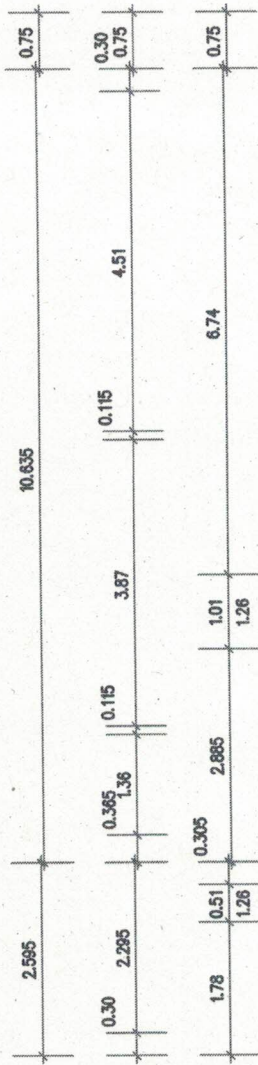
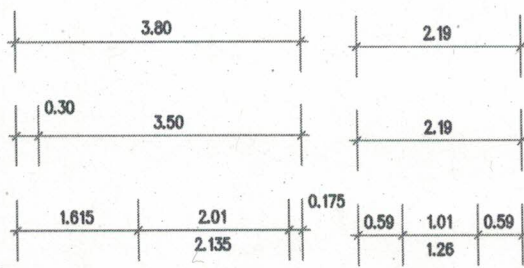


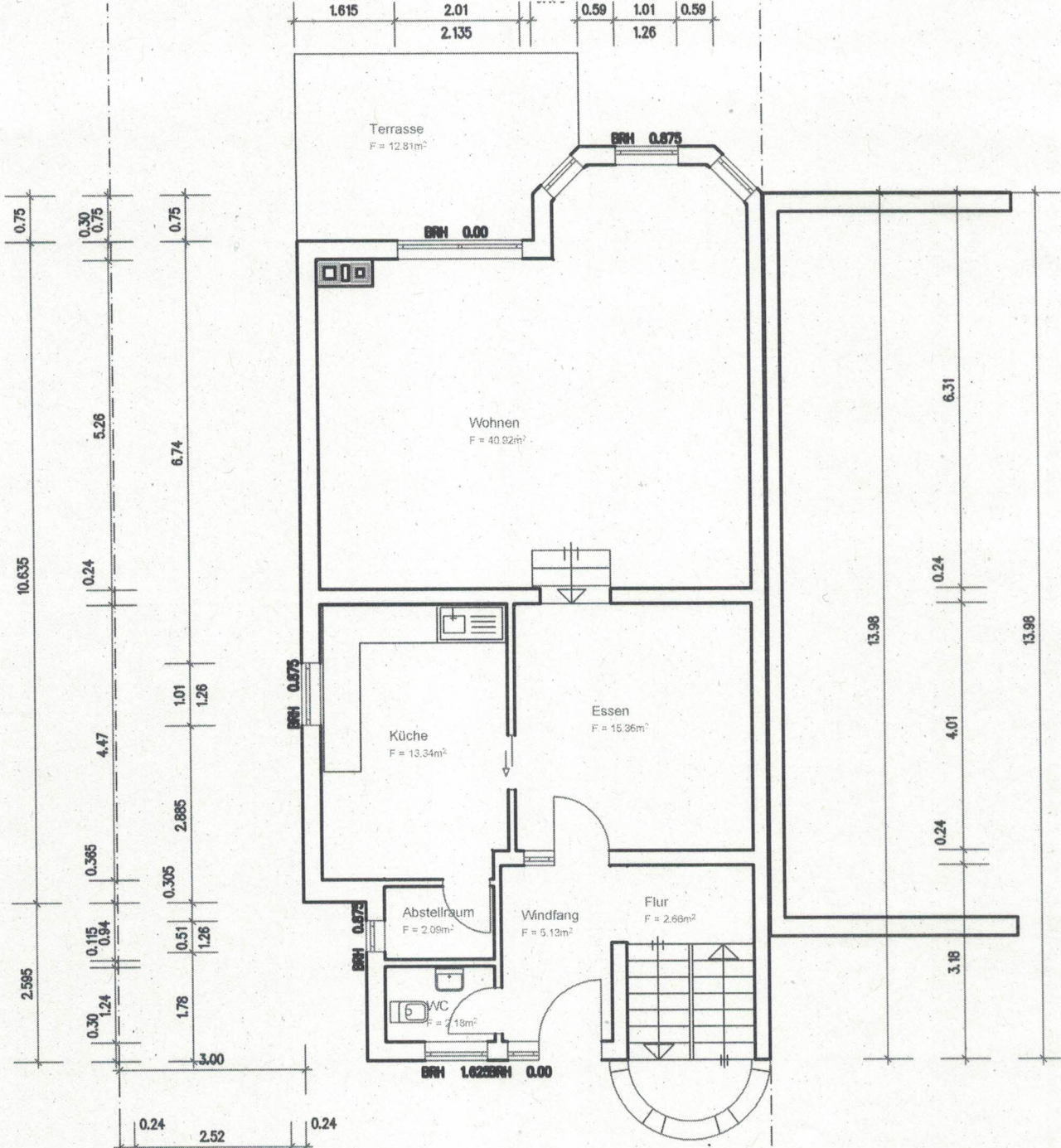
Vorderansicht



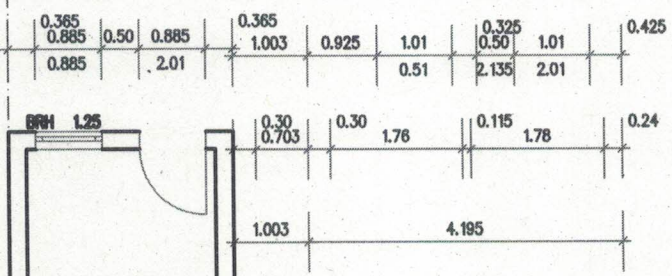
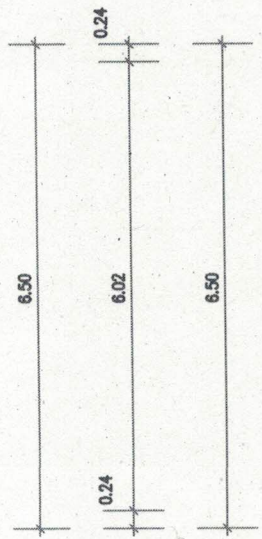
Seitenansicht

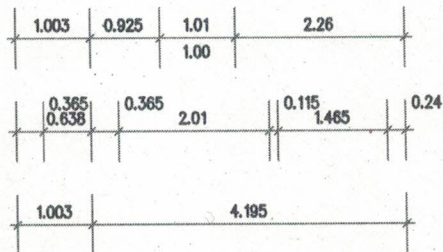
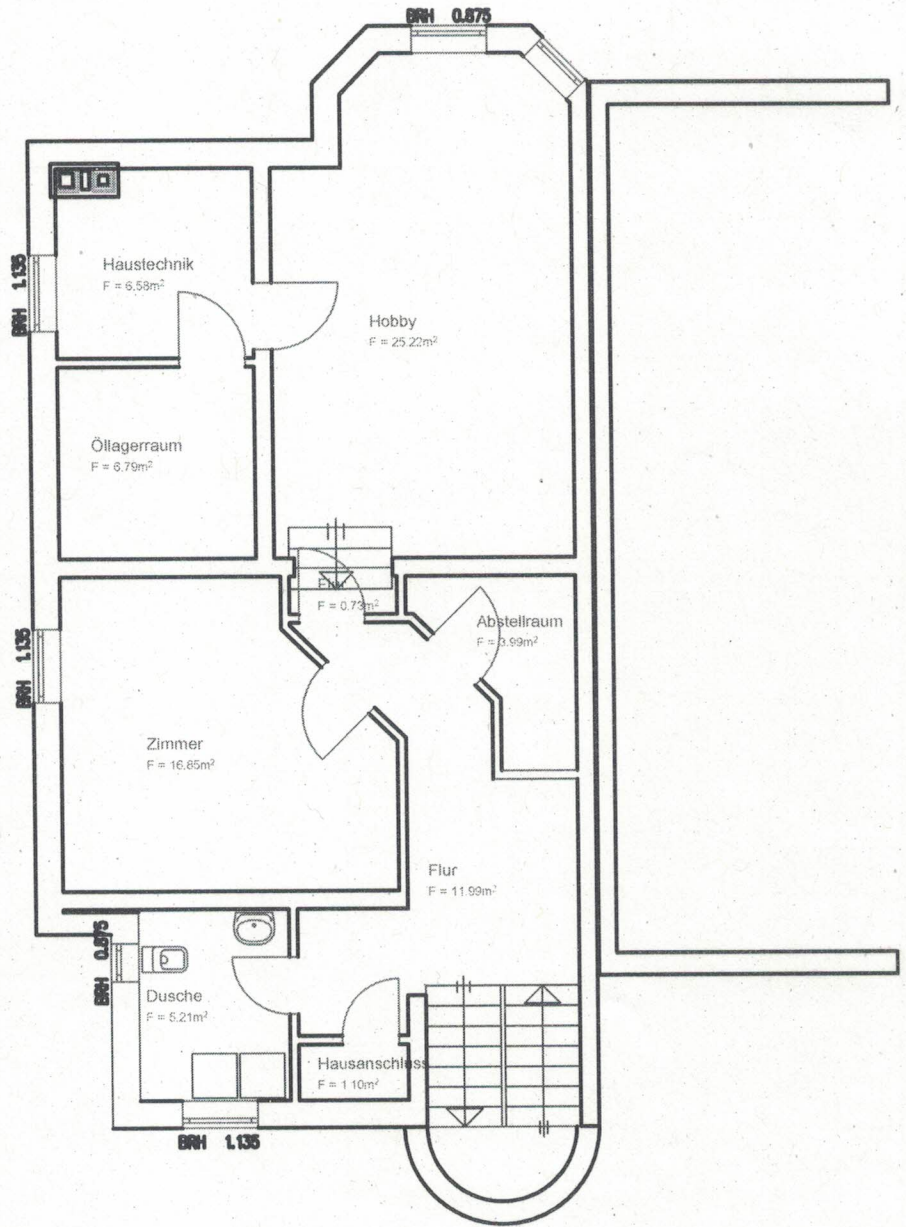
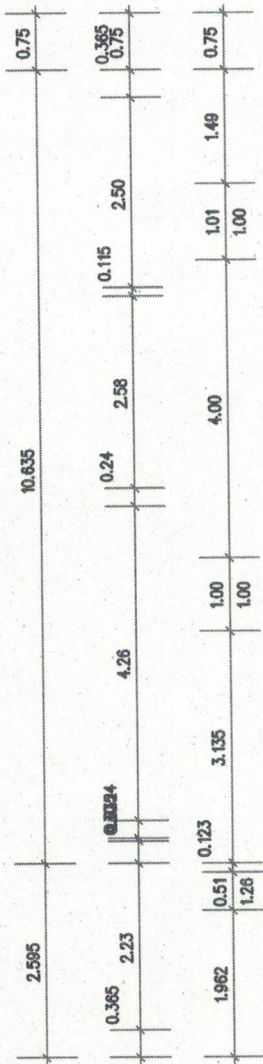
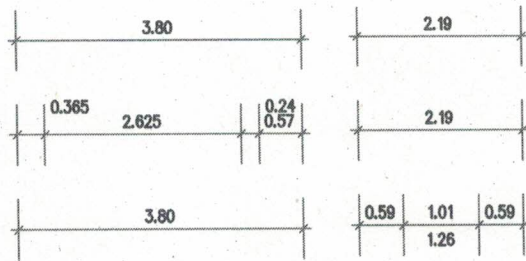


Obergeschoss

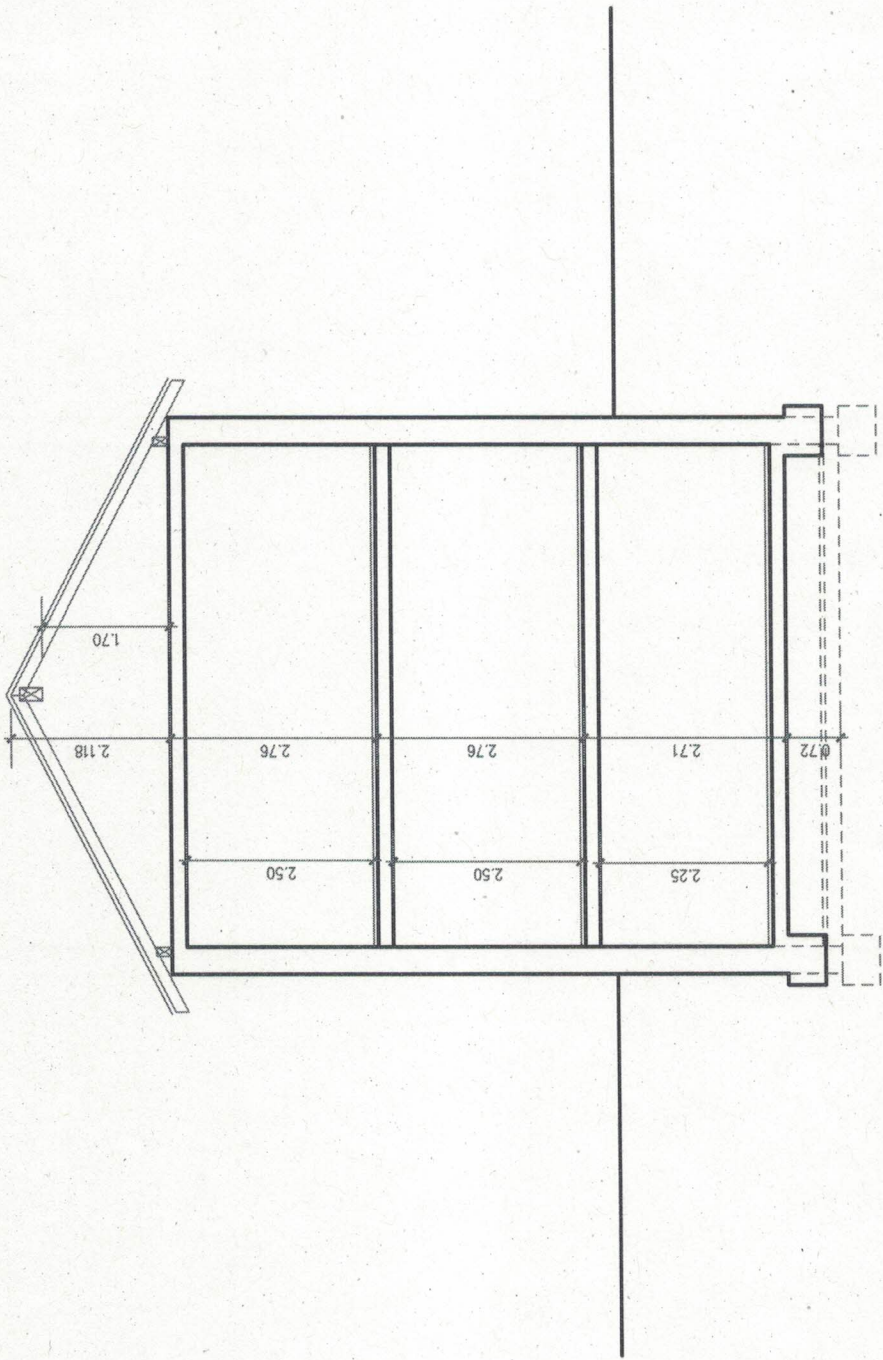


Erdgeschoss





Untergeschoss



Querschnitt

Berechnung der Wohnfläche nach WoFIV

Gläser Immobilien

Rodenbach In den Krehlwiesen 27

WEIGAND

PLANUNGSBÜRO

Erdgeschoss

Flur	2,66	1,0	1,0 =	2,66	
Windfang	5,13	1,0	1,0 =	5,13	
WC	2,18	1,0	1,0 =	2,18	
Abstellraum	2,09	1,0	1,0 =	2,09	
Küche	13,34	1,0	1,0 =	13,34	
Essen	15,36	1,0	1,0 =	15,36	
Wohnen	40,92	1,0	1,0 =	40,92	
Terrasse	12,81	1,0	0,5 =	6,41 =	88,09 m ²

Obergeschoss

Kind	16,11	1,0	1,0 =	16,11	
Dusche	3,20	1,0	1,0 =	3,20	
Kind	15,65	1,0	1,0 =	15,65	
Flur	12,58	1,0	1,0 =	12,58	
Abstellraum	2,95	1,0	1,0 =	2,95	
Bad	14,61	1,0	1,0 =	14,61	
Eltern	17,14	1,0	1,0 =	17,14	
Balkon	7,01	1,0	0,5 =	3,51 =	85,75 m ²

Untergechoss

Hobby	25,22	1,0	1,0 =	25,22	
Flur	0,73	1,0	1,0 =	0,73	
Abstellraum	3,99	1,0	1,0 =	3,99	
Zimmer	16,85	1,0	1,0 =	16,85	
Flur	11,99	1,0	1,0 =	11,99	
Dusche	5,21	1,0	1,0 =	5,21 =	63,99 m ² = 237,82 m ²

Berechnung der Nutzfläche

Hausanschluß	1,10	1,0	1,0 =	1,10	
Öllageraum	6,79	1,0	1,0 =	6,79	
Haustechnik	6,58	1,0	1,0 =	6,58	
Garage	15,17	1,0	1,0 =	15,17 =	29,64 m ²

aufgestellt : Freigericht den 08.06.2024

PLANUNGSBÜRO WEIGAND

Gründige Bäume 6
63579 Freigericht

Cebhard Weigand

Geschäftsführer
Mobil +49 (0) 177 2120820
info@gweigand.de

Andreas Weigand

M.A. Architekt
Mobil +49 (0) 178 5007921
andreas.weigand@gweigand.de

Fon +49 (0) 6055 82136
Fax +49 (0) 6055 82075

www.gweigand.de

Wohnhaus	104,25	8,44	1,00 =	879,87	
	-2,64	0,96	1,00 =	-2,53	
	7,49	0,96	10,64 =	76,07	
	6,51	0,26	2,60 =	4,31	
	6,51	1,54	2,60 =	26,02	
	4,96	0,22	1,00 =	1,09	
	7,01	1,10	1,00 =	7,71 =	992,53 m ³
Garage	6,50	3,00	2,66 =	51,77	
	3,00	0,31	6,50 =	6,05 =	57,82 m ³

aufgestellt : Freigericht den 08.06.2024