



# FLOOR PLANS MASTER

# GROUND FLOOR



Please note: Elevation is indicative to show floor position relative to building.

\*\*Where possible measurements have been taken from the central point of the room.

\*\*The listed dimensions are indicative and are for reference only. These dimensions do not relate to the overall apartment areas. i.e angled floor plans and internal rooms.



# FLOORS 1



Please note: Elevation is indicative to show floor position relative to building.

\*\*Where possible measurements have been taken from the central point of the room.

\*\*The listed dimensions are indicative and are for reference only. These dimensions do not relate to the overall apartment areas, i.e. angled floor plans and internal rooms.



# FLOORS 2



Please note: Elevation is indicative to show floor position relative to building.

\*\*Where possible measurements have been taken from the central point of the room.

\*\*The listed dimensions are indicative and are for reference only. These dimensions do not relate to the overall apartment areas, i.e. angled floor plans and internal rooms.

# FLOORS 3



Please note: Elevation is indicative to show floor position relative to building.

\*\*Where possible measurements have been taken from the central point of the room.

\*\*The listed dimensions are indicative and are for reference only. These dimensions do not relate to the overall apartment areas, i.e. angled floor plans and internal rooms.



# FLOORS 4



Please note: Elevation is indicative to show floor position relative to building.

\*\*Where possible measurements have been taken from the central point of the room.

\*\*The listed dimensions are indicative and are for reference only. These dimensions do not relate to the overall apartment areas, i.e. angled floor plans and internal rooms.



# FLOORS 5



Please note: Elevation is indicative to show floor position relative to building.

\*\*Where possible measurements have been taken from the central point of the room.

\*\*The listed dimensions are indicative and are for reference only. These dimensions do not relate to the overall apartment areas, i.e. angled floor plans and internal rooms.



# FLOORS 6



Please note: Elevation is indicative to show floor position relative to building.

\*\*Where possible measurements have been taken from the central point of the room.

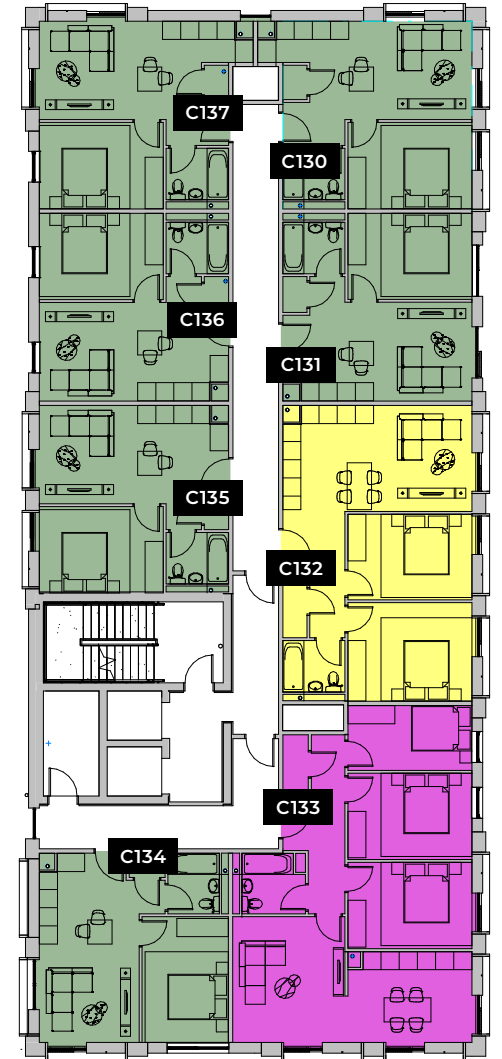
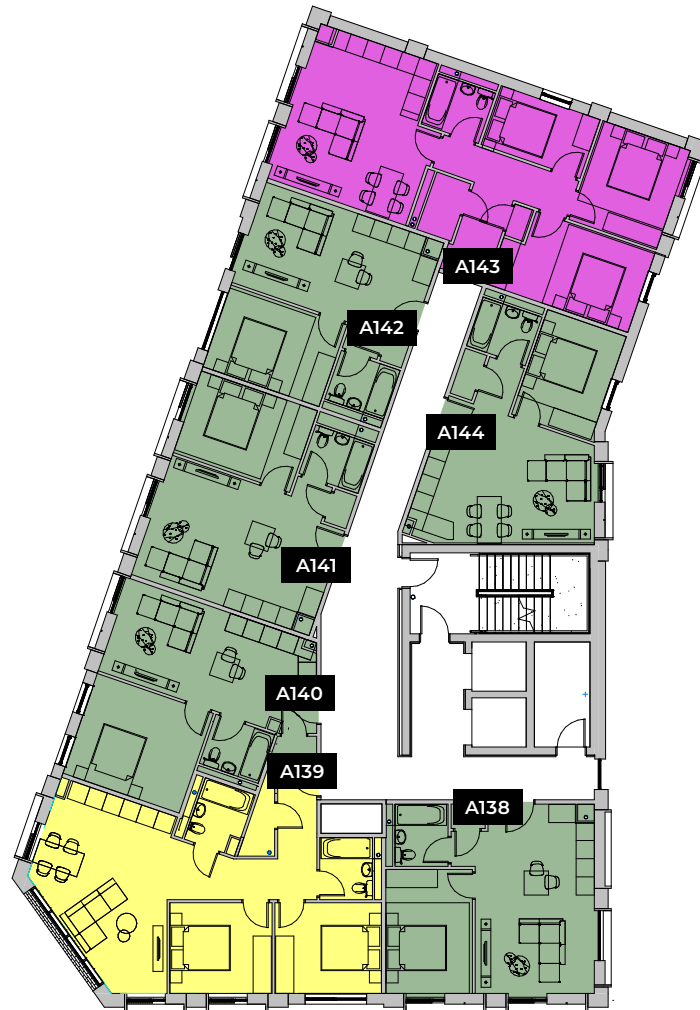
\*\*The listed dimensions are indicative and are for reference only. These dimensions do not relate to the overall apartment areas, i.e. angled floor plans and internal rooms.



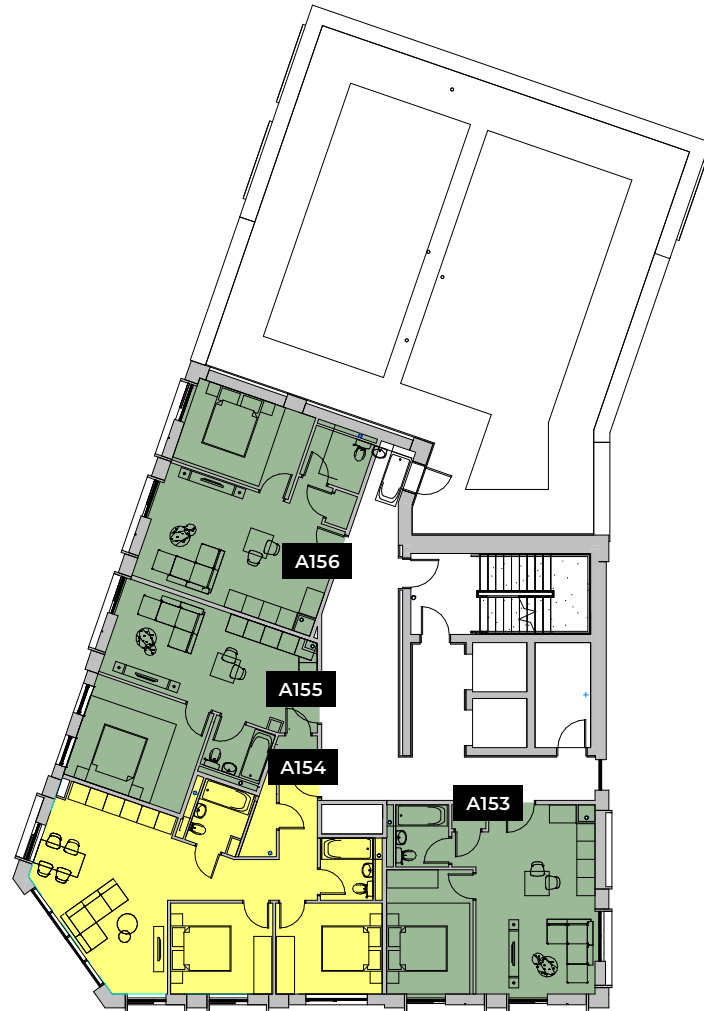
# FLOORS 7



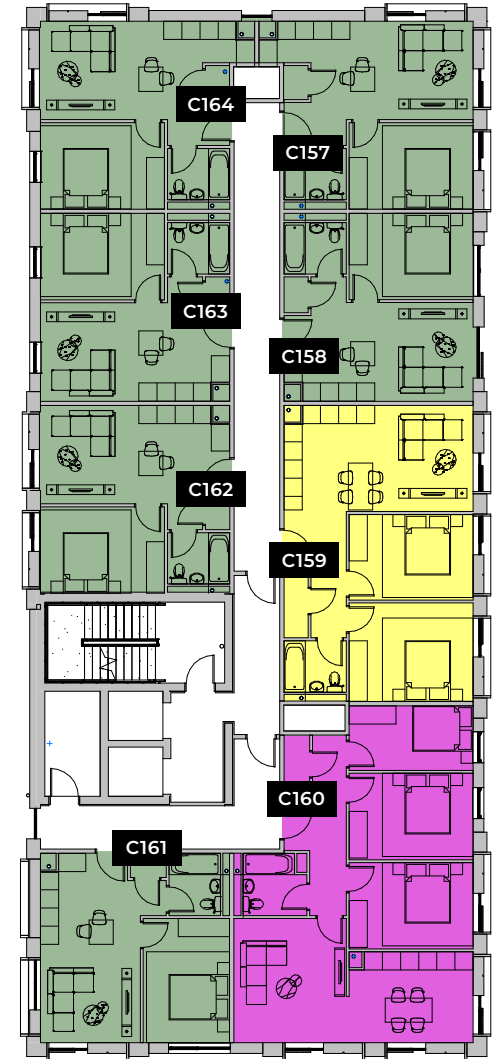
# FLOORS 8



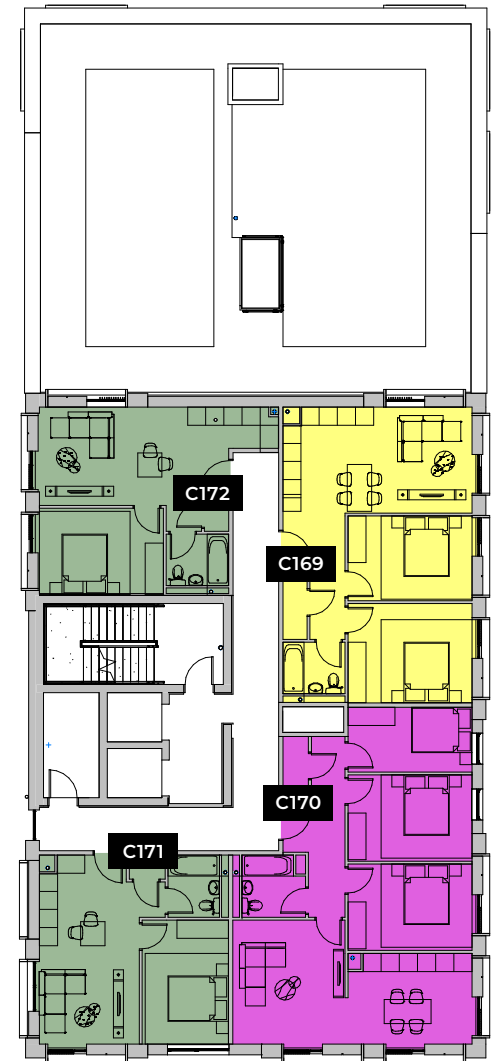
# FLOORS 9



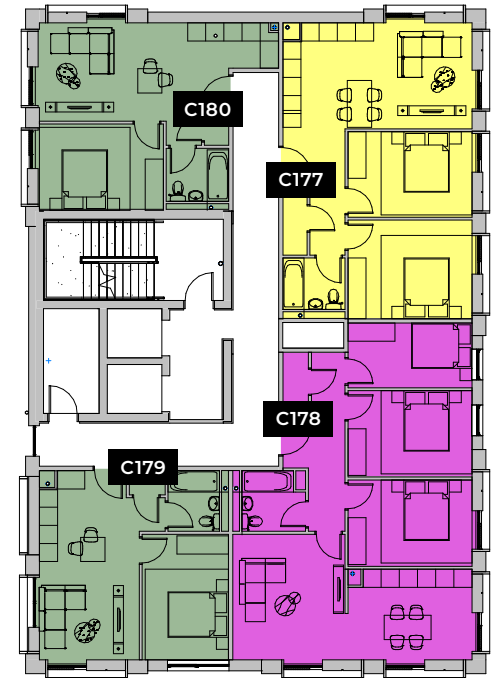
# FLOORS 10



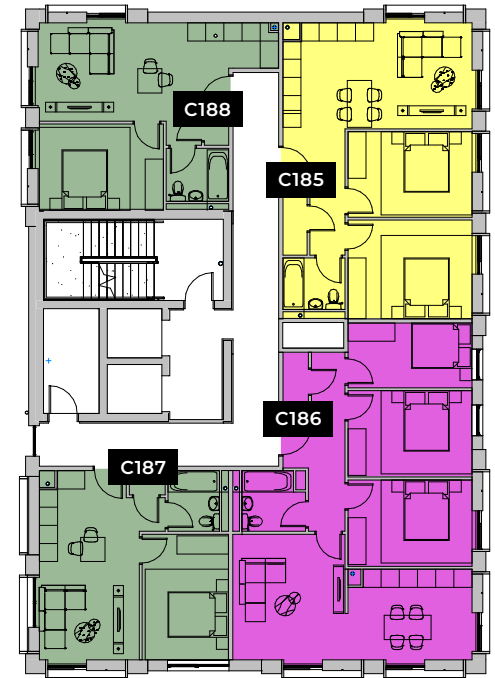
# FLOORS 11



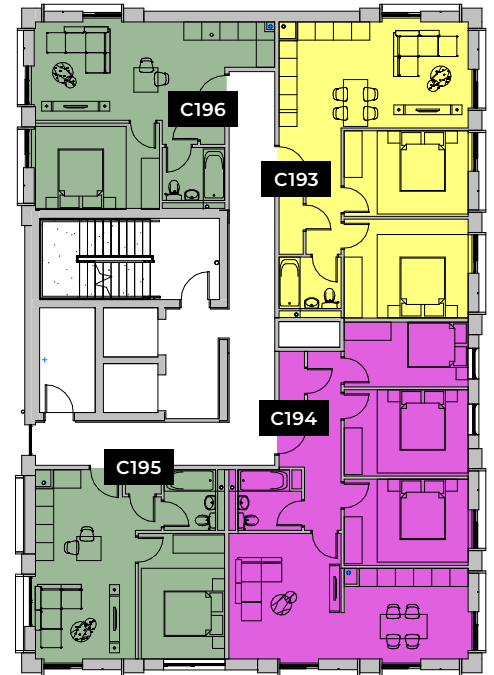
# FLOORS 12



# FLOORS 13



# FLOORS 14





# FLOORS 15





## FLOOR PLANS MASTER

"Alliance Investments Ltd. gives notice that the information provided herein is produced for the general promotion of the properties and does not form part of any contract or offer. This information has been prepared in good faith and is believed to be correct as at the date of publication although the accuracy cannot be guaranteed. All images are for illustration purposes only and, in respect of proposed developments, are intended to provide a general indication of the proposed development only. The developer reserves the right to alter any part of the development, specification or floor layouts at any time. Figures provided for living costs (for example, service charges) are estimates only and may be subject to change. Prospective purchasers should not rely on this information but must get their solicitor to check the plans, specification and property information provided during the sales process. Part or full reproduction of the information contained herein is strictly forbidden without consent from Alliance Investments Ltd."

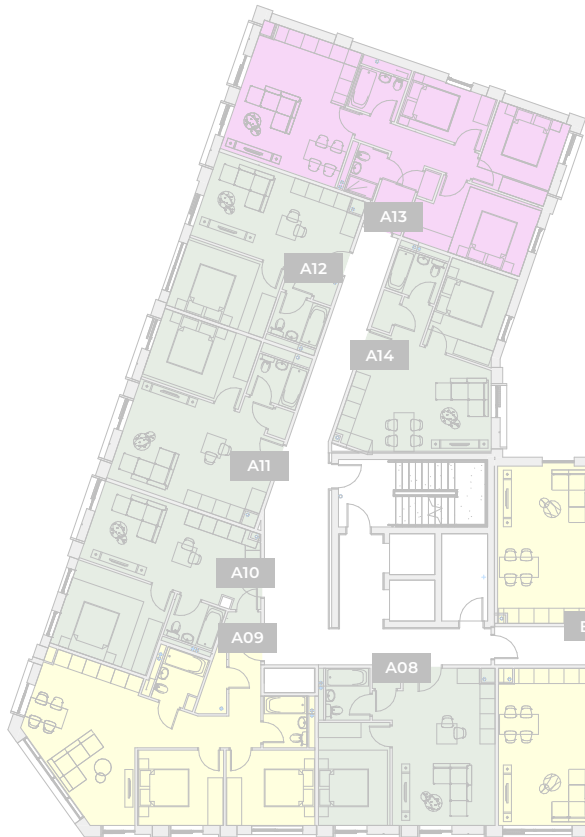
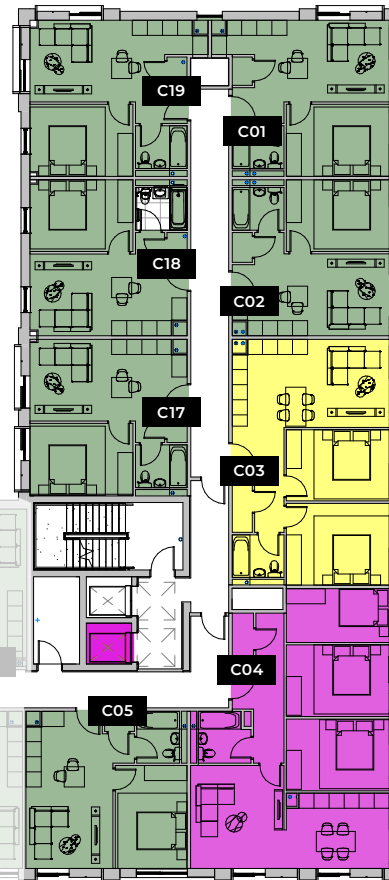


## FLOOR PLANS BLOCK C

# Floor 1

## Apartments C01 - C05, C17 - C19

1-BED      2-BED      3-BED



Please note: Elevation is indicative to show floor position relative to building.

\*\*Where possible measurements have been taken from the central point of the room.

\*\*The listed dimensions are indicative and are for reference only. These dimensions do not relate to the overall apartment areas. i.e. angled floor plans and internal rooms.

One Bed Apartment - 40 sqm  
- 430 sqft

### C01

Rooms	m
Kitchen	3.8 x 1.4
Living Room	3.1 x 3.2
Bathroom	2.0 x 2.0
Bedroom 1	4.1 x 2.8

One Bed Apartment - 39 sqm  
- 419 sqft

### C02

Rooms	m
Kitchen	3.0 x 1.4
Living Room	3.1 x 3.2
Bathroom	2.0 x 2.0
Bedroom 1	4.1 x 2.8

Two Bed Apartment - 60 sqm  
- 645sqft

### C03

Rooms	m
Kitchen	3.0 x 3.4
Living Room	3.2 x 3.4
Bathroom	2.0 x 2.0
Bedroom 1	4.1 x 3.2
Bedroom 2	4.1 x 2.7

Three Bed Apartment - 78 sqm  
- 839 sqft

### C04

Rooms	m
Kitchen	4.1 x 3.0
Living Room	4.1 x 3.7
Bathroom	2.4 x 2.0
Bedroom 1	4.1 x 2.8
Bedroom 2	4.1 x 2.8
Bedroom 3	4.1 x 2.1

One Bed Apartment - 40 sqm  
- 430 sqft

### C05

Rooms	m
Kitchen	3.0 x 1.4
Living Room	3.5 x 3.0
Bathroom	2.0 x 2.0
Bedroom 1	4.1 x 2.8

One Bed Apartment - 39 sqm  
- 419 sqft

### C17

Rooms	m
Kitchen	3.0 x 1.4
Living Room	3.1 x 3.3
Bathroom	2.0 x 2.0
Bedroom 1	4.1 x 2.8

One Bed Apartment - 39 sqm  
- 419 sqft

### C18

Rooms	m
Kitchen	3.0 x 1.4
Living Room	3.1 x 3.3
Bathroom	2.0 x 2.0
Bedroom 1	4.1 x 2.8

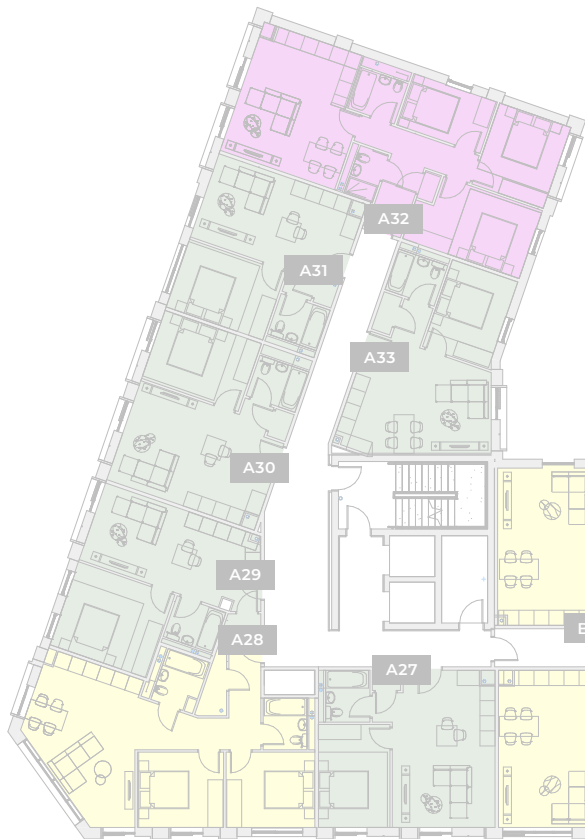
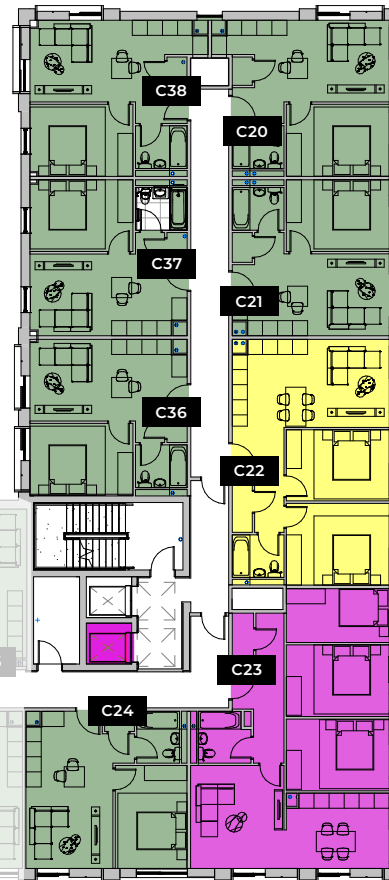
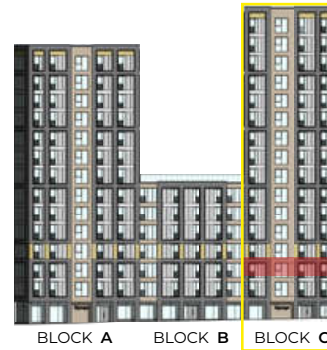
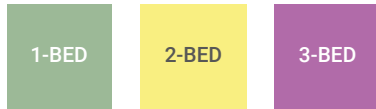
One Bed Apartment - 40 sqm  
- 430 sqft

### C19

Rooms	m
Kitchen	3.8 x 1.4
Living Room	3.1 x 3.2
Bathroom	2.0 x 2.0
Bedroom 1	4.1 x 2.8

## Floor 2

### Apartments C21 - C24, C36 - C38



Please note: Elevation is indicative to show floor position relative to building.

\*\*Where possible measurements have been taken from the central point of the room.

\*\*The listed dimensions are indicative and are for reference only. These dimensions do not relate to the overall apartment areas. i.e. angled floor plans and internal rooms.

One Bed Apartment - 40 sqm  
- 430 sqft

#### C20

Rooms	m
Kitchen	3.8 x 1.4
Living Room	3.1 x 3.2
Bathroom	2.0 x 2.0
Bedroom 1	4.1 x 2.8

One Bed Apartment - 39 sqm  
- 419 sqft

#### C21

Rooms	m
Kitchen	3.0 x 1.4
Living Room	3.1 x 3.2
Bathroom	2.0 x 2.0
Bedroom 1	4.1 x 2.8

Two Bed Apartment - 60 sqm  
- 645sqft

#### C22

Rooms	m
Kitchen	3.0 x 3.4
Living Room	3.2 x 3.4
Bathroom	2.0 x 2.0
Bedroom 1	4.1 x 3.2
Bedroom 2	4.1 x 2.7

Three Bed Apartment - 78 sqm  
- 839 sqft

#### C23

Rooms	m
Kitchen	4.1 x 3.0
Living Room	4.1 x 3.7
Bathroom	2.4 x 2.0
Bedroom 1	4.1 x 2.8
Bedroom 2	4.1 x 2.8
Bedroom 3	4.1 x 2.1

One Bed Apartment - 40 sqm  
- 430 sqft

#### C24

Rooms	m
Kitchen	3.0 x 1.4
Living Room	3.5 x 3.0
Bathroom	2.0 x 2.0
Bedroom 1	4.1 x 2.8

One Bed Apartment - 39 sqm  
- 419 sqft

#### C36

Rooms	m
Kitchen	3.0 x 1.4
Living Room	3.1 x 3.3
Bathroom	2.0 x 2.0
Bedroom 1	4.1 x 2.8

One Bed Apartment - 39 sqm  
- 419 sqft

#### C37

Rooms	m
Kitchen	3.0 x 1.4
Living Room	3.1 x 3.3
Bathroom	2.0 x 2.0
Bedroom 1	4.1 x 2.8

One Bed Apartment - 40 sqm  
- 430 sqft

#### C38

Rooms	m
Kitchen	3.8 x 1.4
Living Room	3.1 x 3.2
Bathroom	2.0 x 2.0
Bedroom 1	4.1 x 2.8

# Floor 3

## Apartments C39 - C43, C55 - C57

1-BED

2-BED

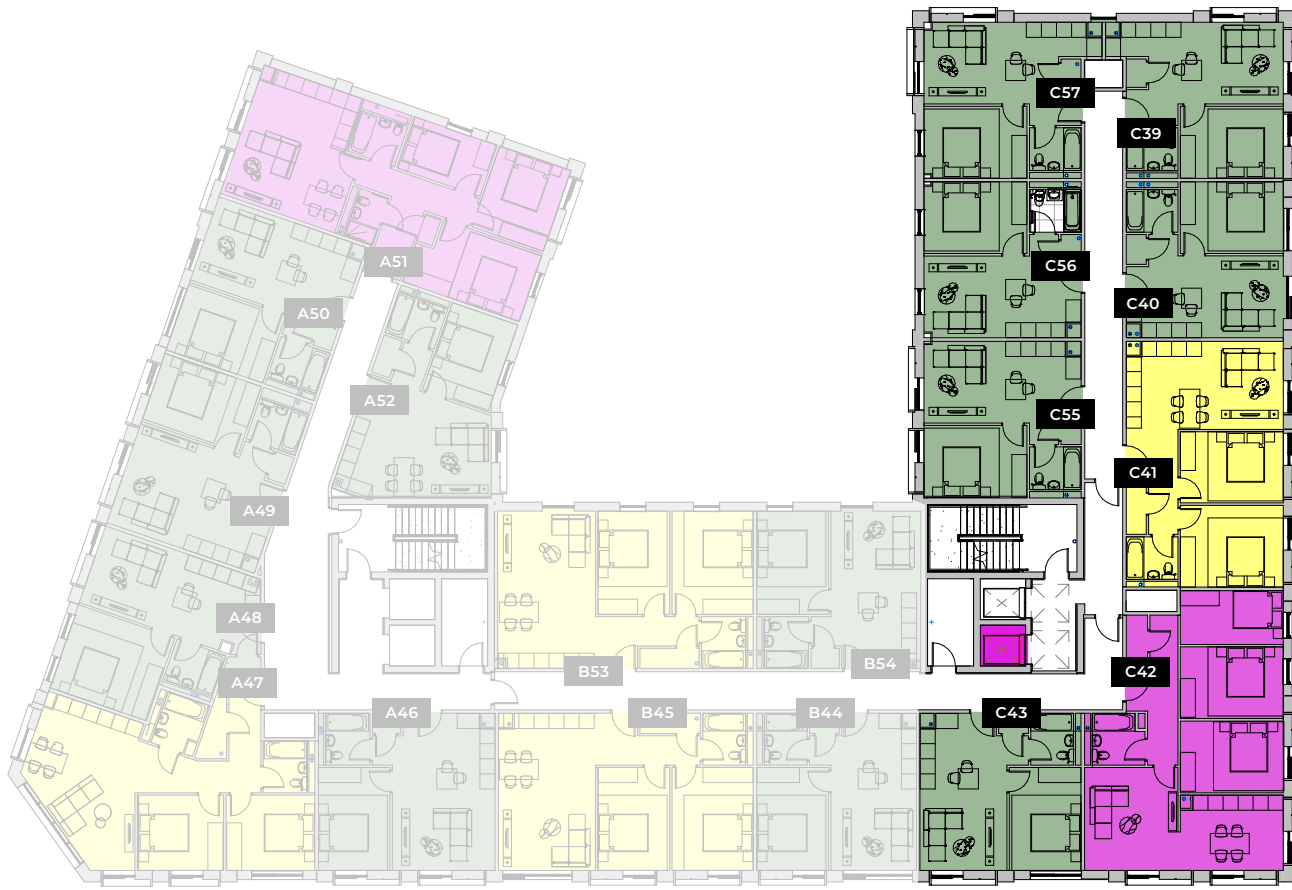
3-BED



BLOCK A

BLOCK B

BLOCK C



Please note: Elevation is indicative to show floor position relative to building.

\*\*Where possible measurements have been taken from the central point of the room.

\*\*The listed dimensions are indicative and are for reference only. These dimensions do not relate to the overall apartment areas. i.e. angled floor plans and internal rooms.

One Bed Apartment - 40 sqm  
- 430 sqft

### C39

Rooms	m
Kitchen	3.8 x 1.4
Living Room	3.1 x 3.2
Bathroom	2.0 x 2.0
Bedroom 1	4.1 x 2.8

One Bed Apartment - 39 sqm  
- 419 sqft

### C40

Rooms	m
Kitchen	3.0 x 1.4
Living Room	3.1 x 3.2
Bathroom	2.0 x 2.0
Bedroom 1	4.1 x 2.8

Two Bed Apartment - 60 sqm  
- 645sqft

### C41

Rooms	m
Kitchen	3.0 x 3.4
Living Room	3.2 x 3.4
Bathroom	2.0 x 2.0
Bedroom 1	4.1 x 3.2
Bedroom 2	4.1 x 2.7

Three Bed Apartment - 78 sqm  
- 839 sqft

### C42

Rooms	m
Kitchen	4.1 x 3.0
Living Room	4.1 x 3.7
Bathroom	2.4 x 2.0
Bedroom 1	4.1 x 2.8
Bedroom 2	4.1 x 2.8
Bedroom 3	4.1 x 2.1

One Bed Apartment - 40 sqm  
- 430 sqft

### C43

Rooms	m
Kitchen	3.0 x 1.4
Living Room	3.5 x 3.0
Bathroom	2.0 x 2.0
Bedroom 1	4.1 x 2.8

One Bed Apartment - 39 sqm  
- 419 sqft

### C55

Rooms	m
Kitchen	3.0 x 1.4
Living Room	3.1 x 3.3
Bathroom	2.0 x 2.0
Bedroom 1	4.1 x 2.8

One Bed Apartment - 39 sqm  
- 419 sqft

### C56

Rooms	m
Kitchen	3.0 x 1.4
Living Room	3.1 x 3.3
Bathroom	2.0 x 2.0
Bedroom 1	4.1 x 2.8

One Bed Apartment - 40 sqm  
- 430 sqft

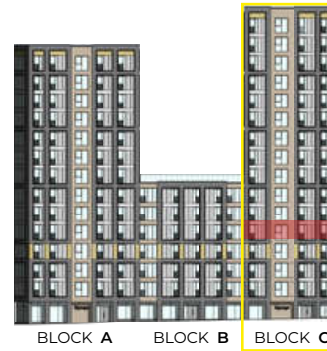
### C57

Rooms	m
Kitchen	3.8 x 1.4
Living Room	3.1 x 3.2
Bathroom	2.0 x 2.0
Bedroom 1	4.1 x 2.8

# Floor 4

## Apartments C58 - C62, C74 - C76

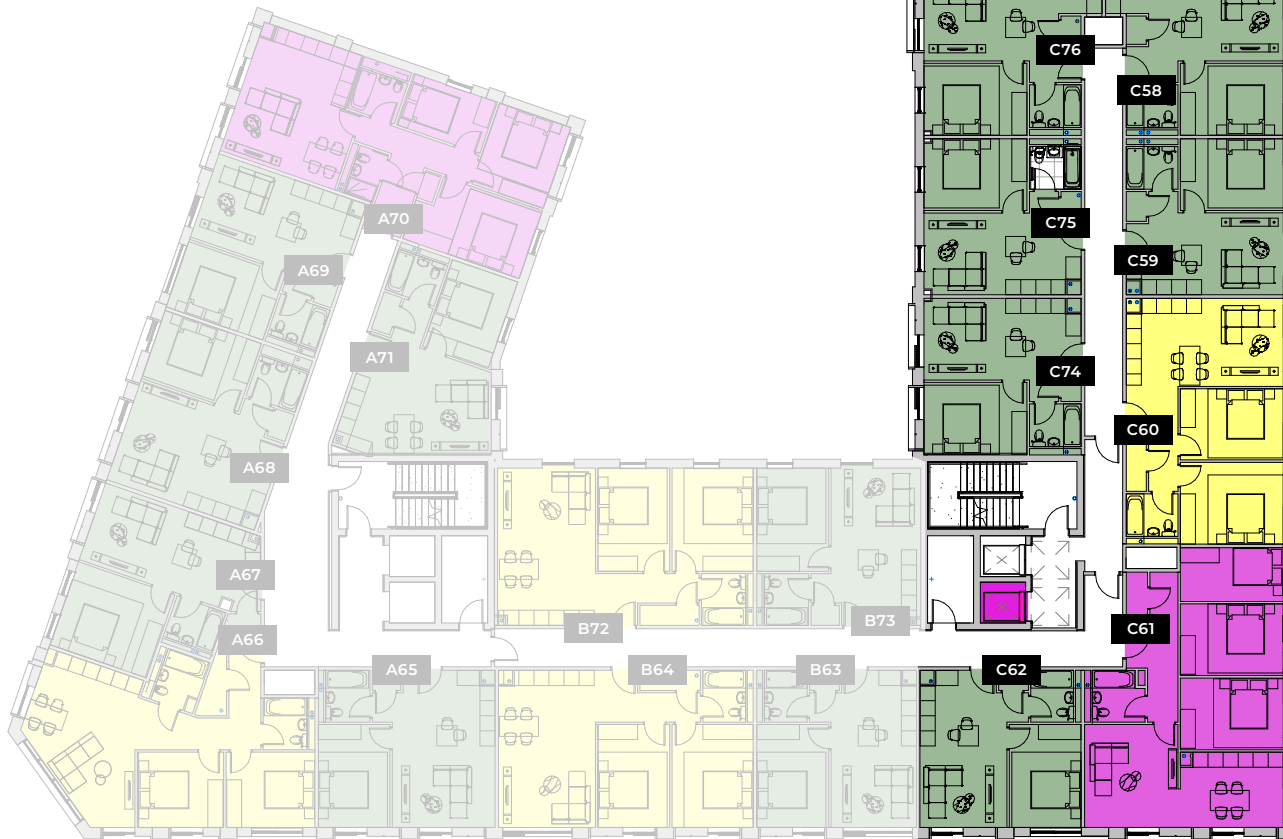
1-BED	2-BED	3-BED
-------	-------	-------



BLOCK A

BLOCK B

BLOCK C



Please note: Elevation is indicative to show floor position relative to building.

\*\*Where possible measurements have been taken from the central point of the room.

\*\*The listed dimensions are indicative and are for reference only. These dimensions do not relate to the overall apartment areas. i.e. angled floor plans and internal rooms.

One Bed Apartment - 40 sqm  
- 430 sqft

### C58

Rooms	m
Kitchen	3.8 x 1.4
Living Room	3.1 x 3.2
Bathroom	2.0 x 2.0
Bedroom 1	4.1 x 2.8

One Bed Apartment - 39 sqm  
- 419 sqft

### C59

Rooms	m
Kitchen	3.0 x 1.4
Living Room	3.1 x 3.2
Bathroom	2.0 x 2.0
Bedroom 1	4.1 x 2.8

Two Bed Apartment - 60 sqm  
- 645sqft

### C60

Rooms	m
Kitchen	3.0 x 3.4
Living Room	3.2 x 3.4
Bathroom	2.0 x 2.0
Bedroom 1	4.1 x 3.2
Bedroom 2	4.1 x 2.7

Three Bed Apartment - 78 sqm  
- 839 sqft

### C61

Rooms	m
Kitchen	4.1 x 3.0
Living Room	4.1 x 3.7
Bathroom	2.4 x 2.0
Bedroom 1	4.1 x 2.8
Bedroom 2	4.1 x 2.8
Bedroom 3	4.1 x 2.1

One Bed Apartment - 40 sqm  
- 430 sqft

### C62

Rooms	m
Kitchen	3.0 x 1.4
Living Room	3.5 x 3.0
Bathroom	2.0 x 2.0
Bedroom 1	4.1 x 2.8

One Bed Apartment - 39 sqm  
- 419 sqft

### C74

Rooms	m
Kitchen	3.0 x 1.4
Living Room	3.1 x 3.3
Bathroom	2.0 x 2.0
Bedroom 1	4.1 x 2.8

One Bed Apartment - 39 sqm  
- 419 sqft

### C75

Rooms	m
Kitchen	3.0 x 1.4
Living Room	3.1 x 3.3
Bathroom	2.0 x 2.0
Bedroom 1	4.1 x 2.8

One Bed Apartment - 40 sqm  
- 430 sqft

### C76

Rooms	m
Kitchen	3.8 x 1.4
Living Room	3.1 x 3.2
Bathroom	2.0 x 2.0
Bedroom 1	4.1 x 2.8

# Floor 5

## Apartments C77 - C81, C93 - C95

1-BED

2-BED

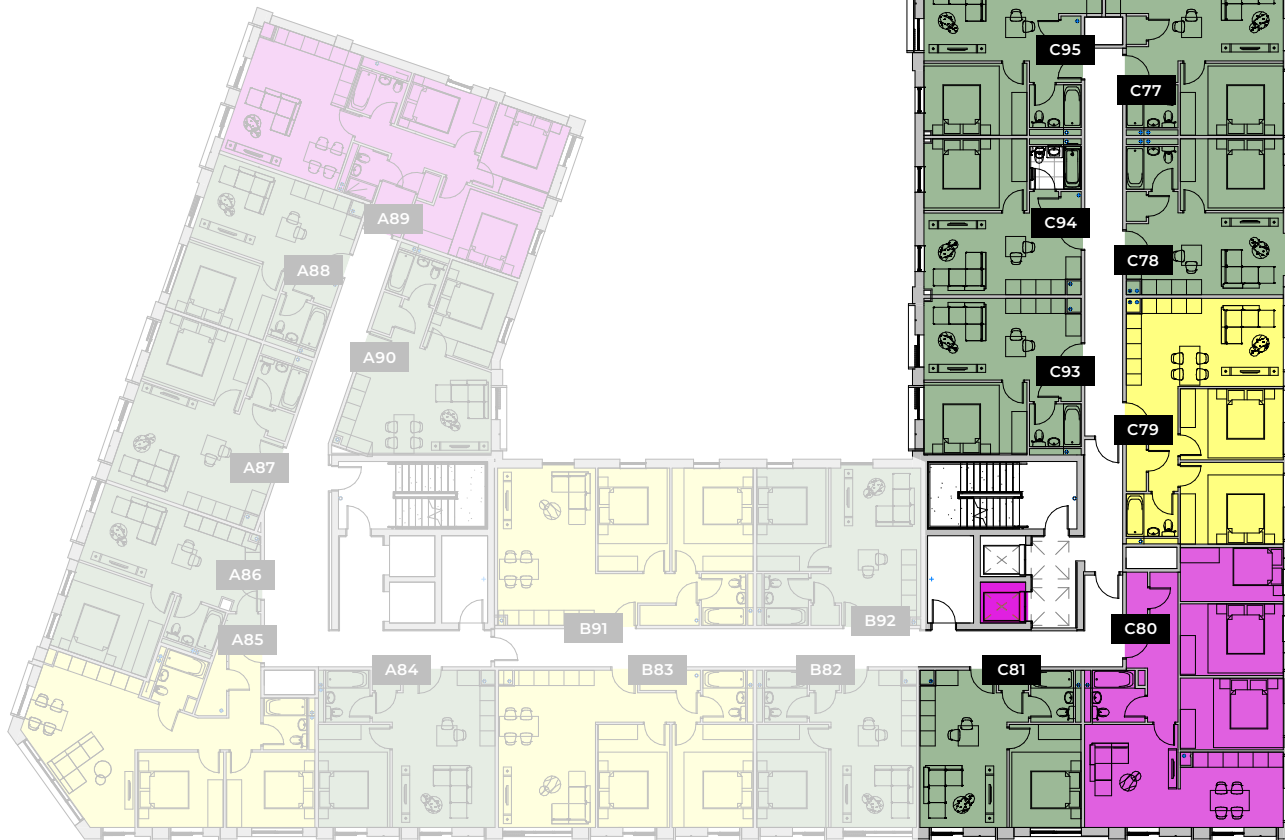
3-BED



BLOCK A

BLOCK B

BLOCK C



Please note: Elevation is indicative to show floor position relative to building.

\*\*Where possible measurements have been taken from the central point of the room.

\*\*The listed dimensions are indicative and are for reference only. These dimensions do not relate to the overall apartment areas. i.e. angled floor plans and internal rooms.

One Bed Apartment - 40 sqm  
- 430 sqft

### C77

Rooms	m
Kitchen	3.0 x 1.4
Living Room	3.1 x 3.2
Bathroom	2.0 x 2.0
Bedroom 1	4.1 x 2.8

One Bed Apartment - 39 sqm  
- 419 sqft

### C78

Rooms	m
Kitchen	3.0 x 1.4
Living Room	3.1 x 3.2
Bathroom	2.0 x 2.0
Bedroom 1	4.1 x 2.8

Two Bed Apartment - 60 sqm  
- 645sqft

### C79

Rooms	m
Kitchen	3.0 x 3.4
Living Room	3.2 x 3.4
Bathroom	2.0 x 2.0
Bedroom 1	4.1 x 3.2
Bedroom 2	4.1 x 2.7

Three Bed Apartment - 78 sqm  
- 839 sqft

### C80

Rooms	m
Kitchen	4.1 x 3.0
Living Room	4.1 x 3.7
Bathroom	2.4 x 2.0
Bedroom 1	4.1 x 2.8
Bedroom 2	4.1 x 2.8
Bedroom 3	4.1 x 2.1

One Bed Apartment - 40 sqm  
- 430 sqft

### C81

Rooms	m
Kitchen	3.0 x 1.4
Living Room	3.5 x 3.0
Bathroom	2.0 x 2.0
Bedroom 1	4.1 x 2.8

One Bed Apartment - 39 sqm  
- 419 sqft

### C93

Rooms	m
Kitchen	3.0 x 1.4
Living Room	3.1 x 3.3
Bathroom	2.0 x 2.0
Bedroom 1	4.1 x 2.8

One Bed Apartment - 39 sqm  
- 419 sqft

### C94

Rooms	m
Kitchen	3.0 x 1.4
Living Room	3.1 x 3.3
Bathroom	2.0 x 2.0
Bedroom 1	4.1 x 2.8

One Bed Apartment - 40 sqm  
- 430 sqft

### C95

Rooms	m
Kitchen	3.8 x 1.4
Living Room	3.1 x 3.2
Bathroom	2.0 x 2.0
Bedroom 1	4.1 x 2.8



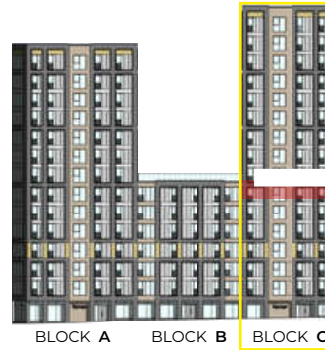
# Floor 6

## Apartments C96 - C100, C112 - C114

1-BED

2-BED

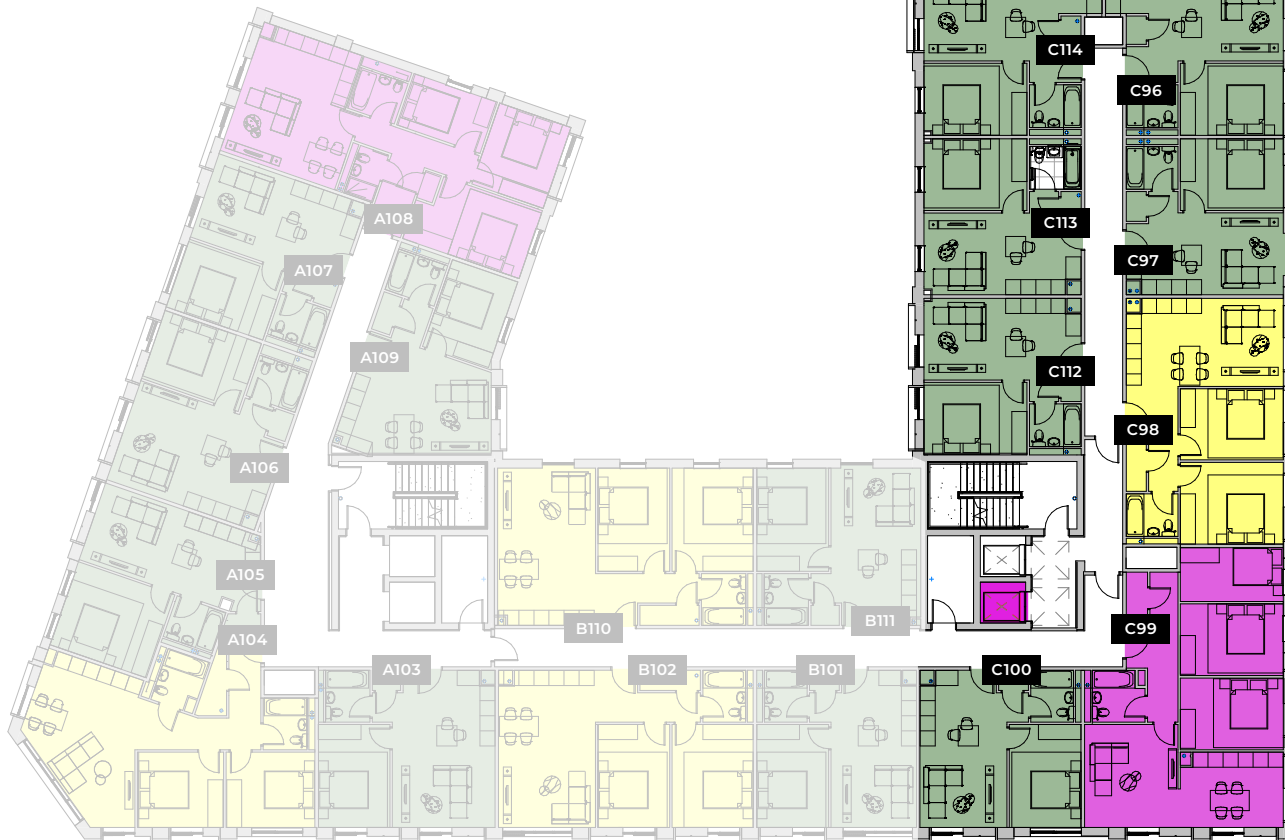
3-BED



BLOCK A

BLOCK B

BLOCK C



Please note: Elevation is indicative to show floor position relative to building.

\*\*Where possible measurements have been taken from the central point of the room.

\*\*The listed dimensions are indicative and are for reference only. These dimensions do not relate to the overall apartment areas. i.e. angled floor plans and internal rooms.

One Bed Apartment - 40 sqm  
- 430 sqft

### C96

Rooms	m
Kitchen	3.8 x 1.4
Living Room	3.1 x 3.2
Bathroom	2.0 x 2.0
Bedroom 1	4.1 x 2.8

One Bed Apartment - 39 sqm  
- 419 sqft

### C97

Rooms	m
Kitchen	3.0 x 1.4
Living Room	3.1 x 3.2
Bathroom	2.0 x 2.0
Bedroom 1	4.1 x 2.8

Two Bed Apartment - 60 sqm  
- 645sqft

### C98

Rooms	m
Kitchen	3.0 x 3.4
Living Room	3.2 x 3.4
Bathroom	2.0 x 2.0
Bedroom 1	4.1 x 3.2
Bedroom 2	4.1 x 2.7

Three Bed Apartment - 78 sqm  
- 839 sqft

### C99

Rooms	m
Kitchen	4.1 x 3.0
Living Room	4.1 x 3.7
Bathroom	2.4 x 2.0
Bedroom 1	4.1 x 2.8
Bedroom 2	4.1 x 2.8
Bedroom 3	4.1 x 2.1

One Bed Apartment - 40 sqm  
- 430 sqft

### C100

Rooms	m
Kitchen	3.0 x 1.4
Living Room	3.5 x 3.0
Bathroom	2.0 x 2.0
Bedroom 1	4.1 x 2.8

One Bed Apartment - 39 sqm  
- 419 sqft

### C112

Rooms	m
Kitchen	3.0 x 1.4
Living Room	3.1 x 3.3
Bathroom	2.0 x 2.0
Bedroom 1	4.1 x 2.8

One Bed Apartment - 39 sqm  
- 419 sqft

### C113

Rooms	m
Kitchen	3.0 x 1.4
Living Room	3.1 x 3.3
Bathroom	2.0 x 2.0
Bedroom 1	4.1 x 2.8

One Bed Apartment - 40 sqm  
- 430 sqft

### C114

Rooms	m
Kitchen	3.8 x 1.4
Living Room	3.1 x 3.2
Bathroom	2.0 x 2.0
Bedroom 1	4.1 x 2.8