

Balkon
F = 22,90m²
U = 21,43m
W4

Bebaute Fläche
F = 87,70m²
U = 38,16m
SG-M

BH 13⁵

BH 13⁵

2. Rettungsweg

Wohnen
F = 26,44m²
U = 22,99m
W4

Holztreppe

16 Stg 18.4 x 25.0

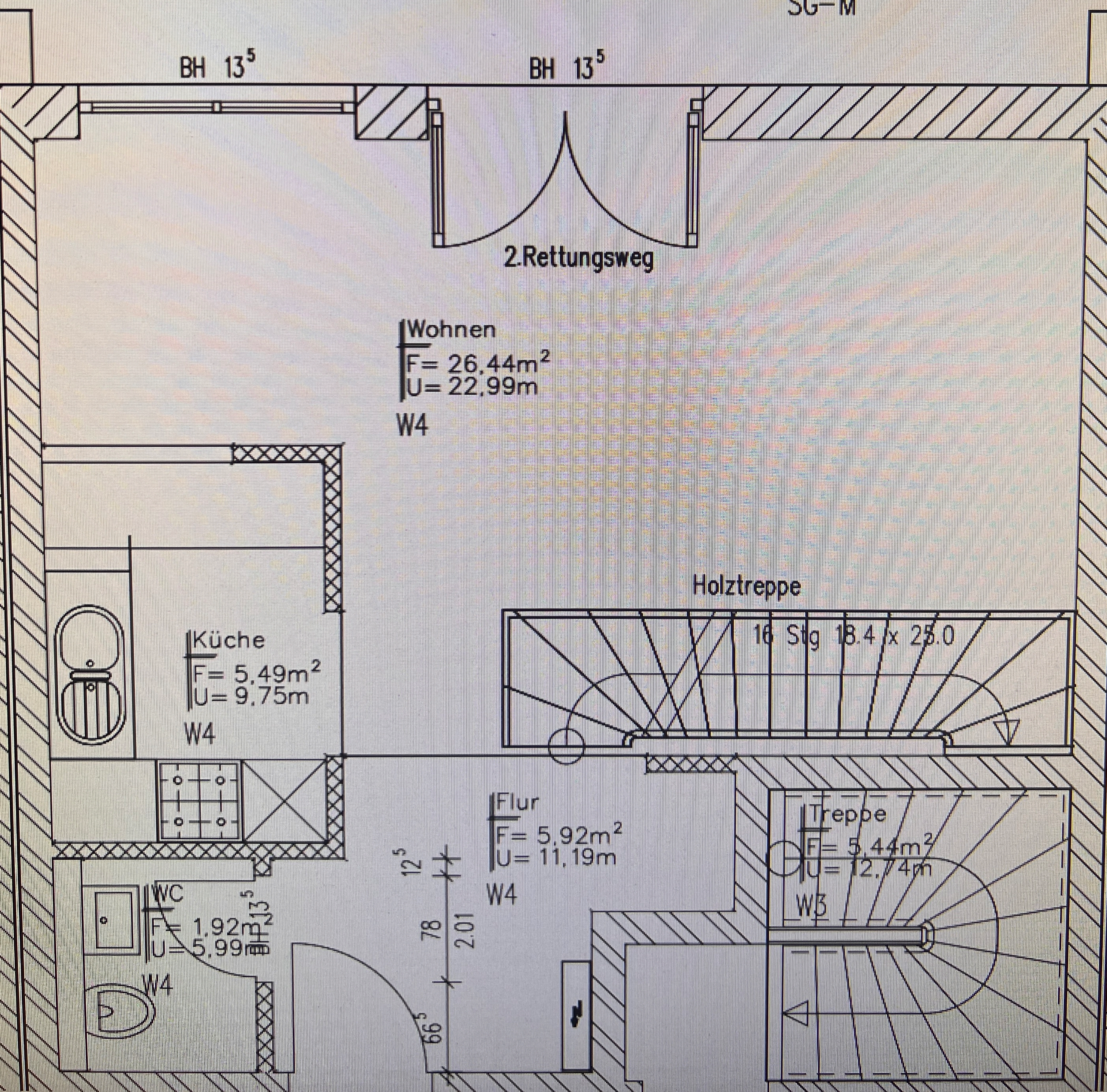
Küche
F = 5,49m²
U = 9,75m
W4

Flur
F = 5,92m²
U = 11,19m
W4

Treppe
F = 5,44m²
U = 12,74m
W3

WC
F = 1,92m²
U = 5,99m
W4

12⁵
78
2.01
66⁵



Brüstungswand Höhe mind.
900mm ab OK-Belag

Dachterrasse
F= 6,13m²
U= 9,91m
W3

2. Rettungsweg

BH 1.04 BH 37⁵

TRV-VSG FV

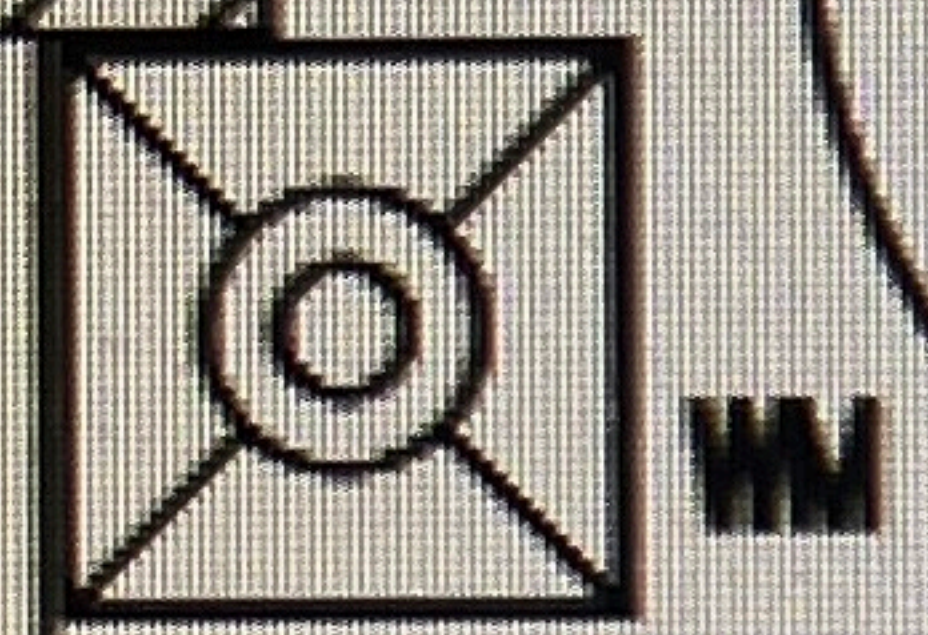
BH 50 BH 50

Ebene OG W6
Luftbaum

Treppe

F= 4,13m²
U= 10,07m
W3

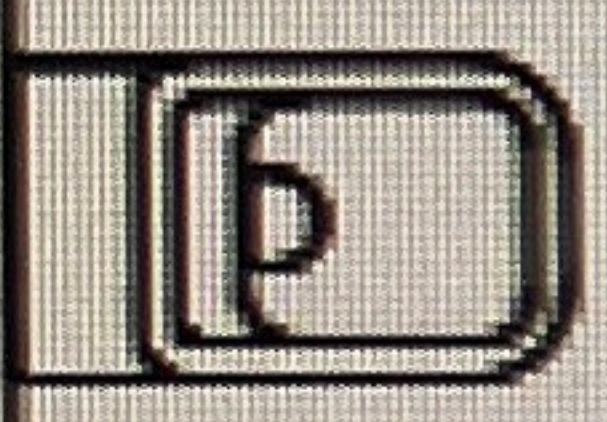
16 Stg 18,4 x 28,0



WM

Dusche
bodengl.

Bad
F= 15,02m²
U= 27,63m
W3

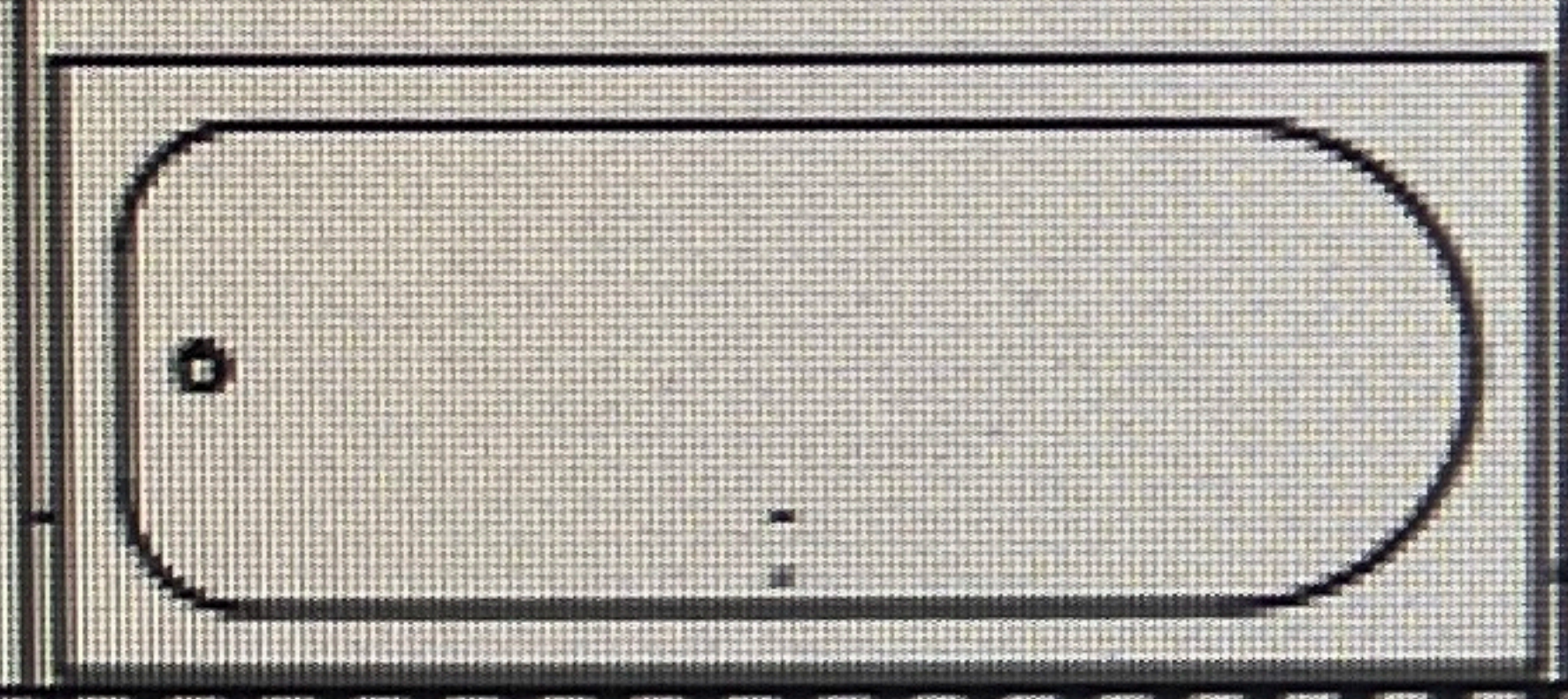
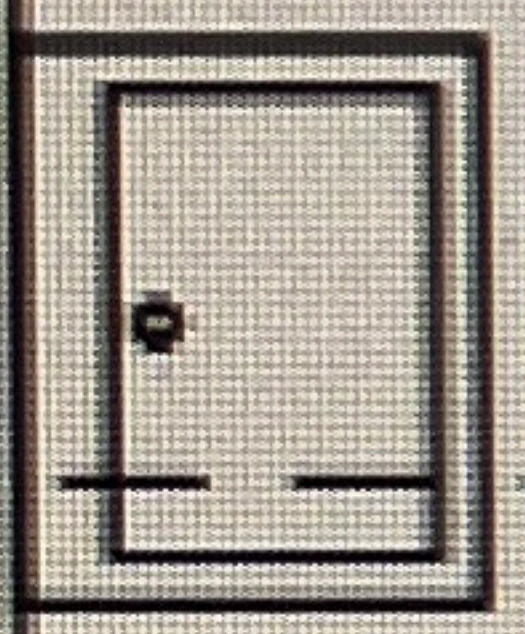


W3

Brüstungswand H=900mm ab OKFFb

Empore
F= 15,02m²
U= 27,63m
W3

BH 18⁵ 12
2.01



1.17
BH 18⁵

BH 18⁵

Schlafen
F= 18,30m²
U= 17,27m
W3

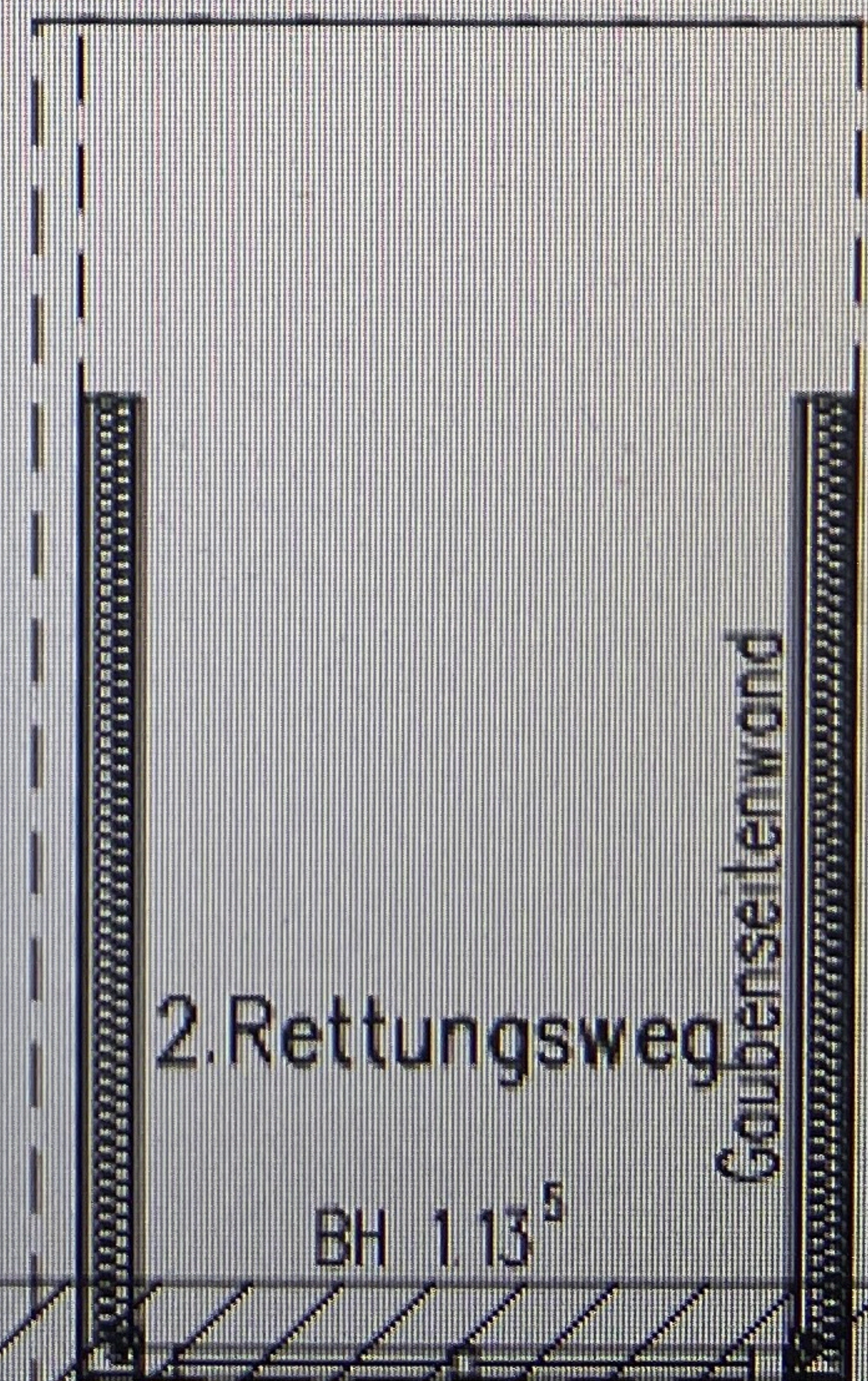
Kind
F= 13,09m²
U= 14,96m
W3

W3



Gaubenseitenwand

BH 1.13⁵



Gaubenseitenwand

BH 1.13⁵

2. Rettungsweg