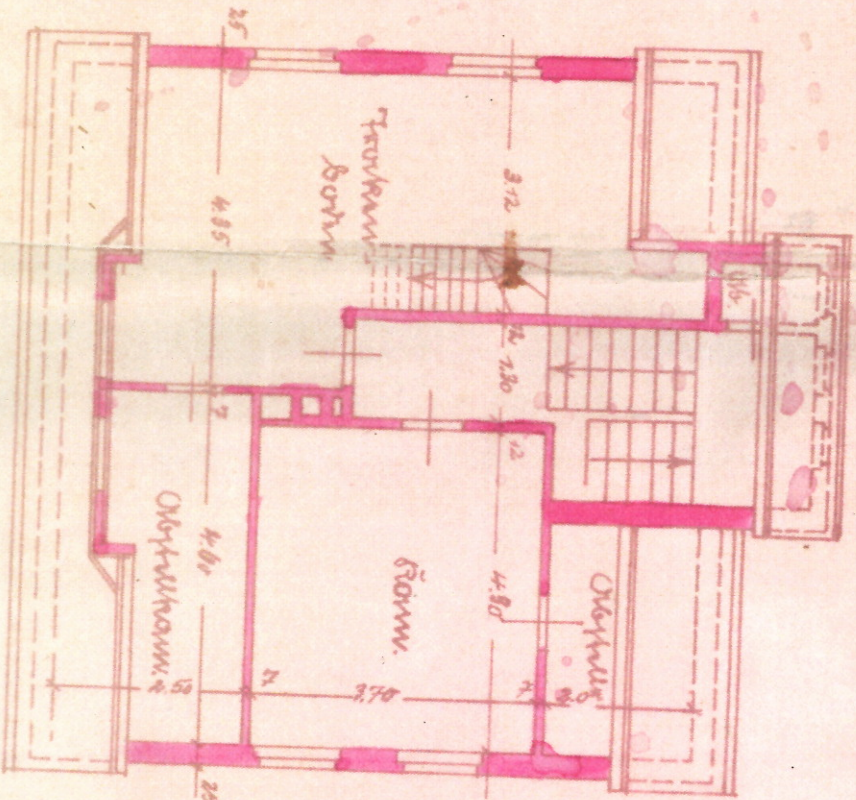
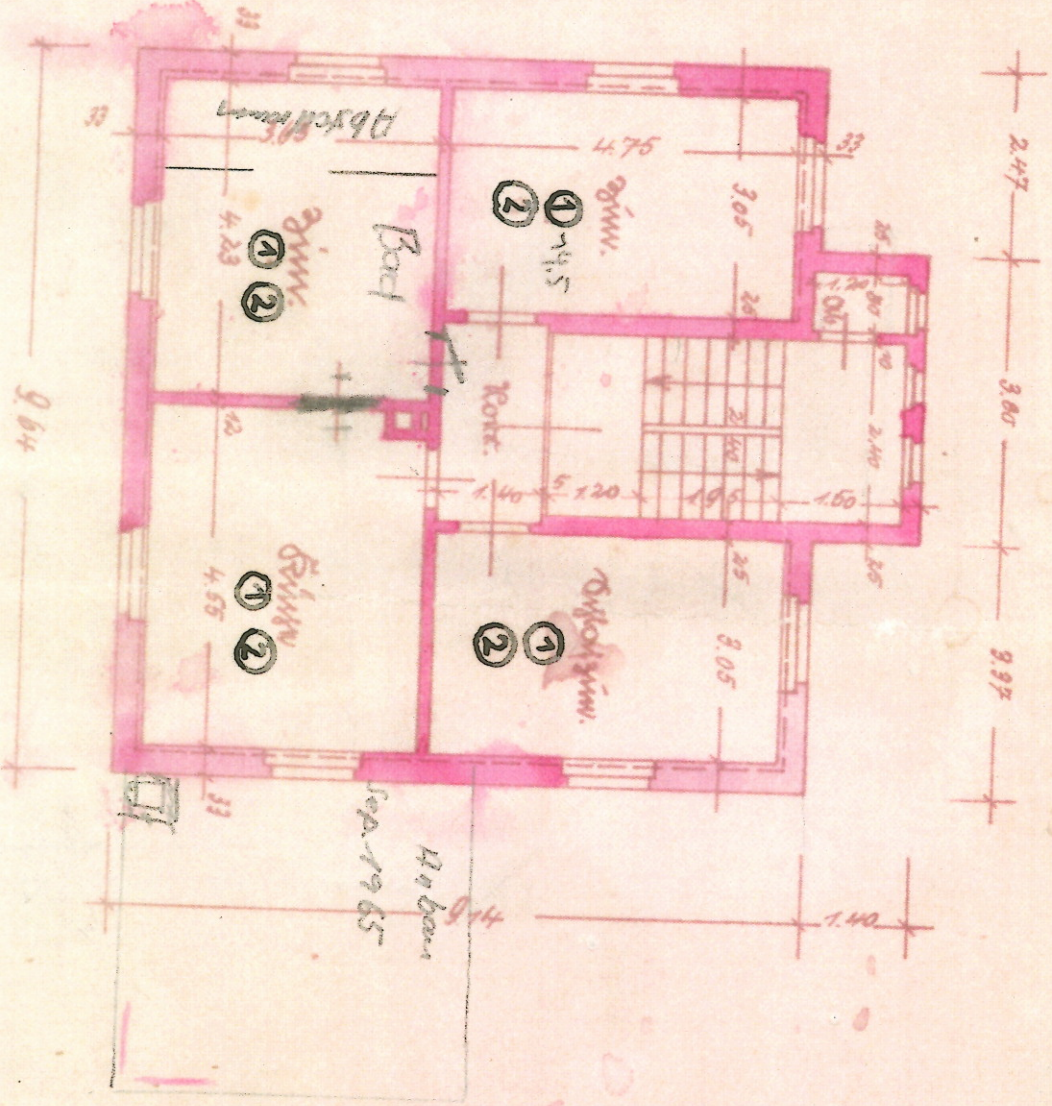


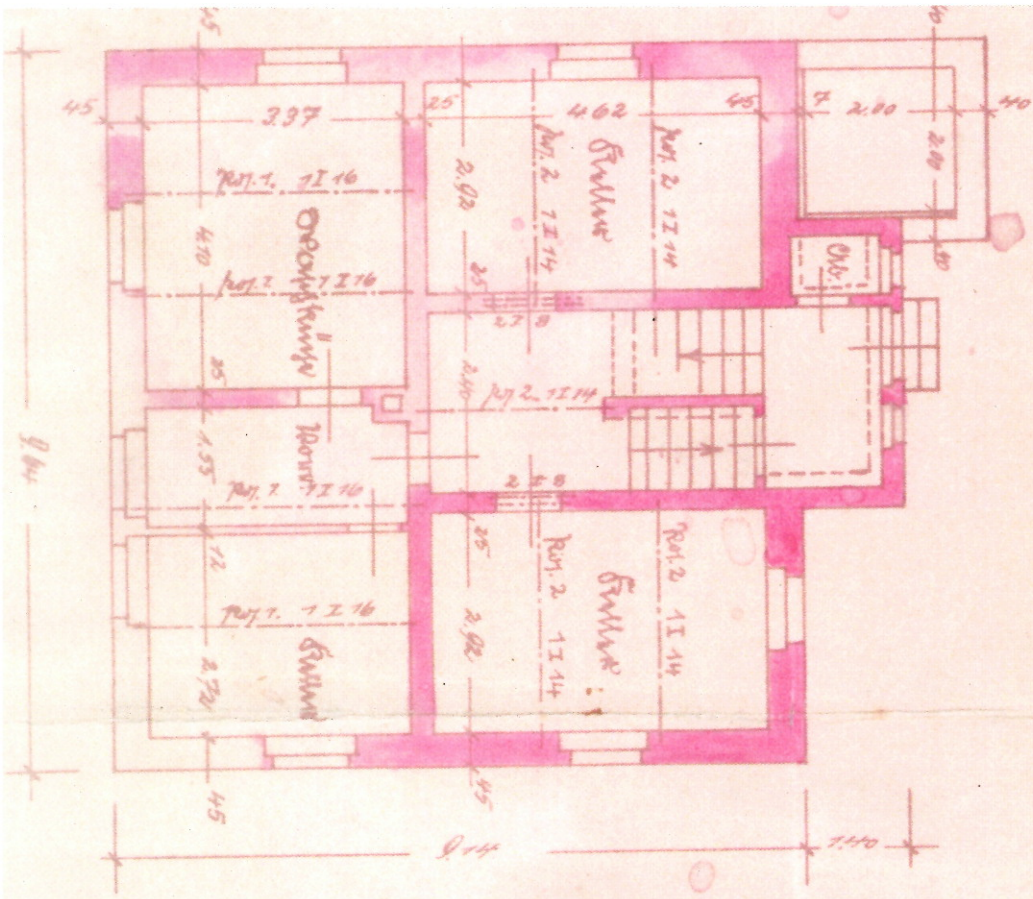
Масштаб 1:100.

Экз в Общественн.

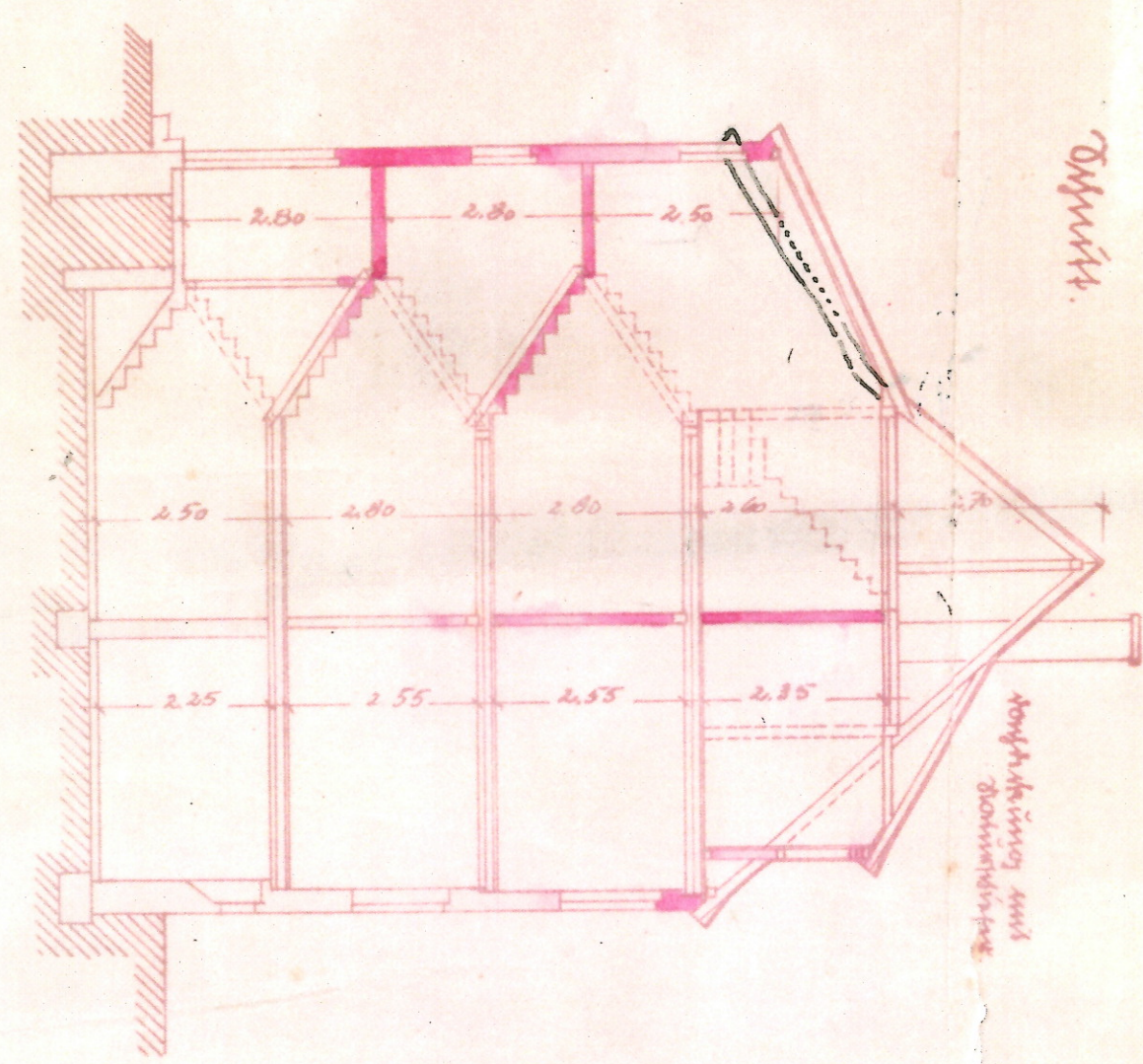
Полуприхож







*Küchenplan.*

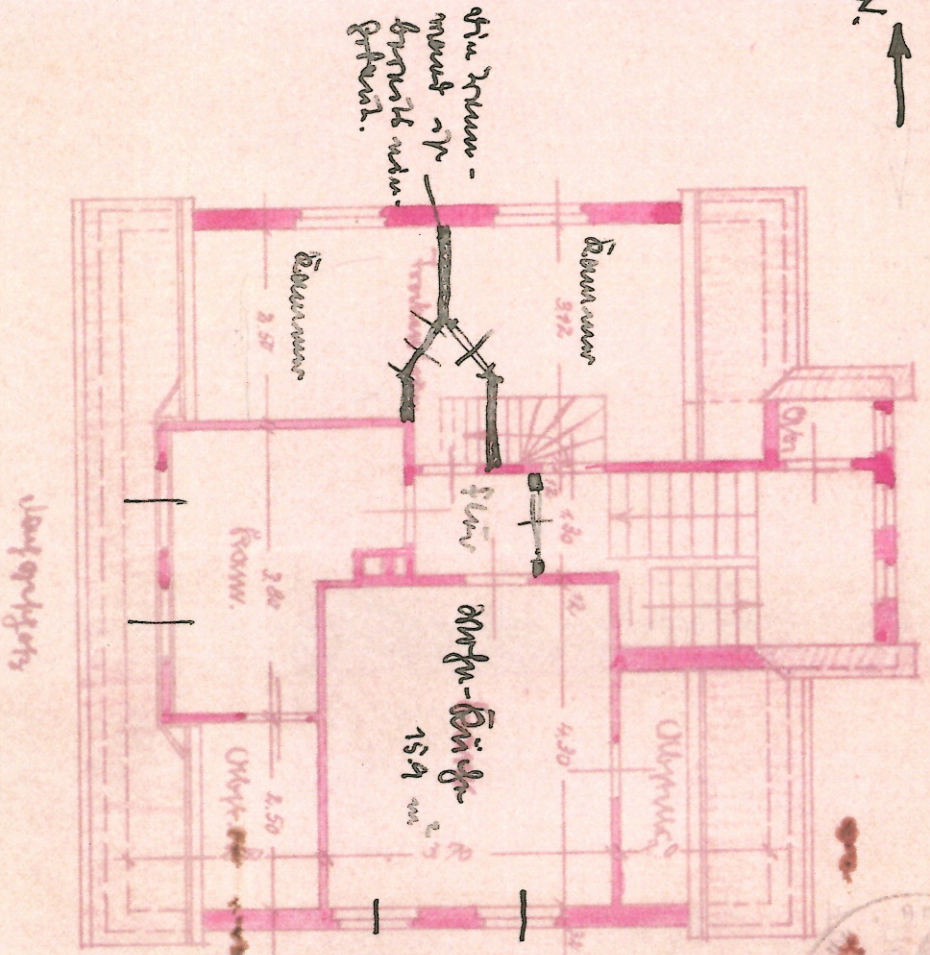


*Dachstuhl.*

*Abgaberichtung aus Dachstuhl.*



Veranschaulichung eines neuverordneten Dienstgebäudes für die Fischereiwirtschaft des Landesamtes, bestehend aus  
zwei Hauptgebäuden im Landort a/b



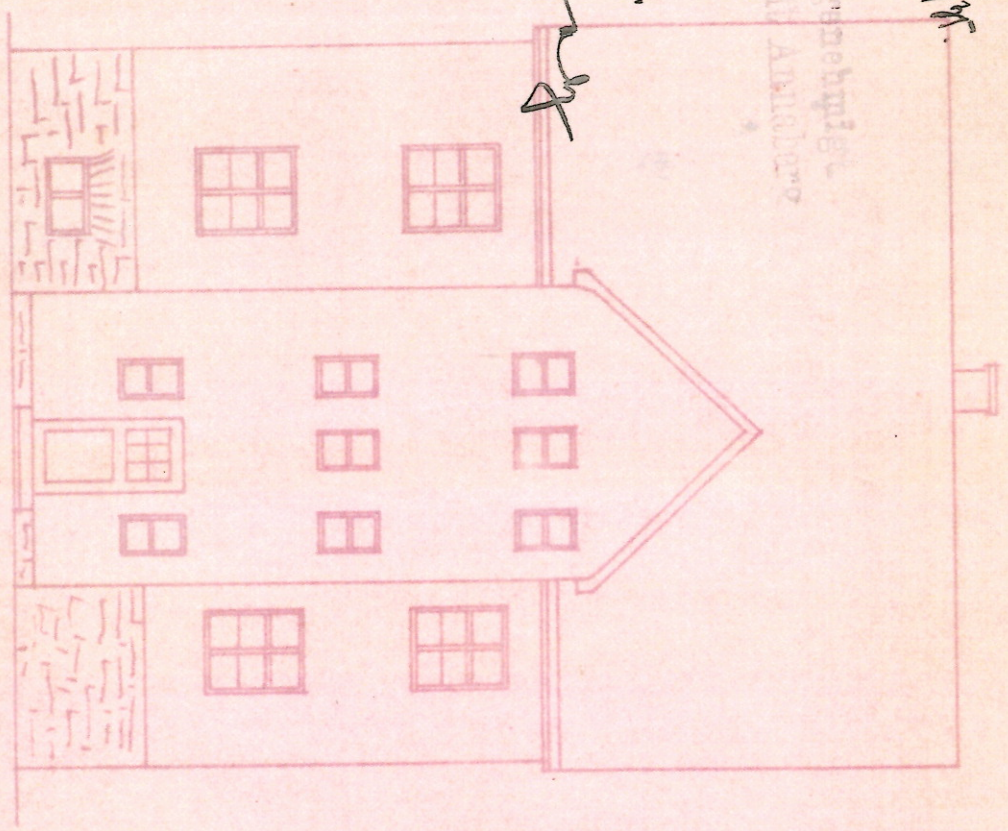
die neuen -  
muss an  
den alten an-  
geknüpft.



17. Dez. 1936

M. 1908/36

H. N. G.

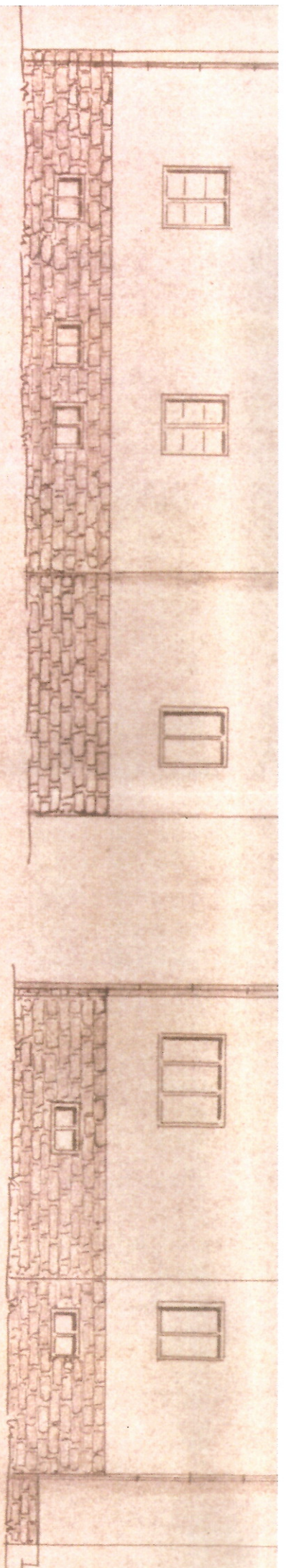


Wohnhaus

Landesamt für Fischereiwirtschaft

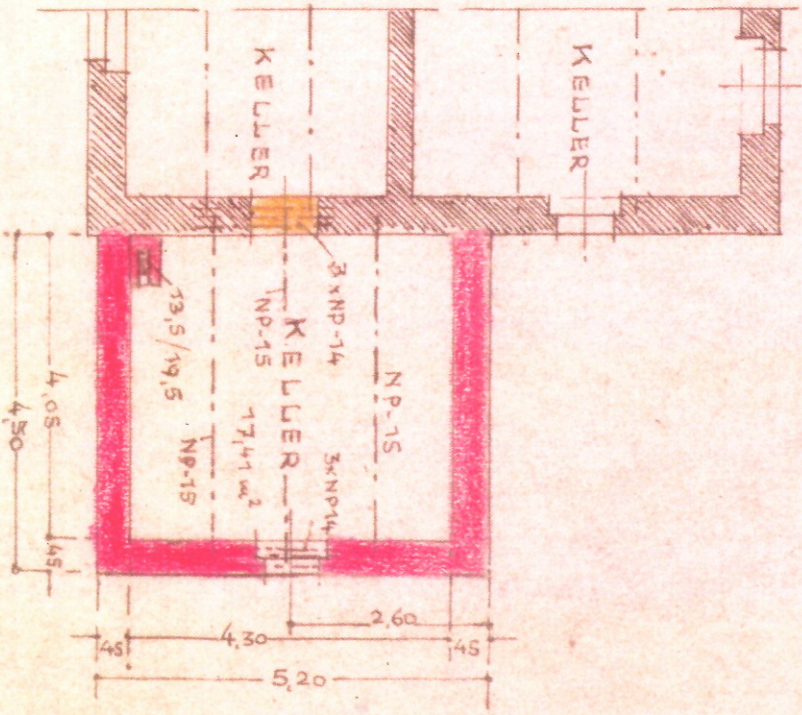
Rudolf P.  
Bauingenieur  
Neu-  
R. P.



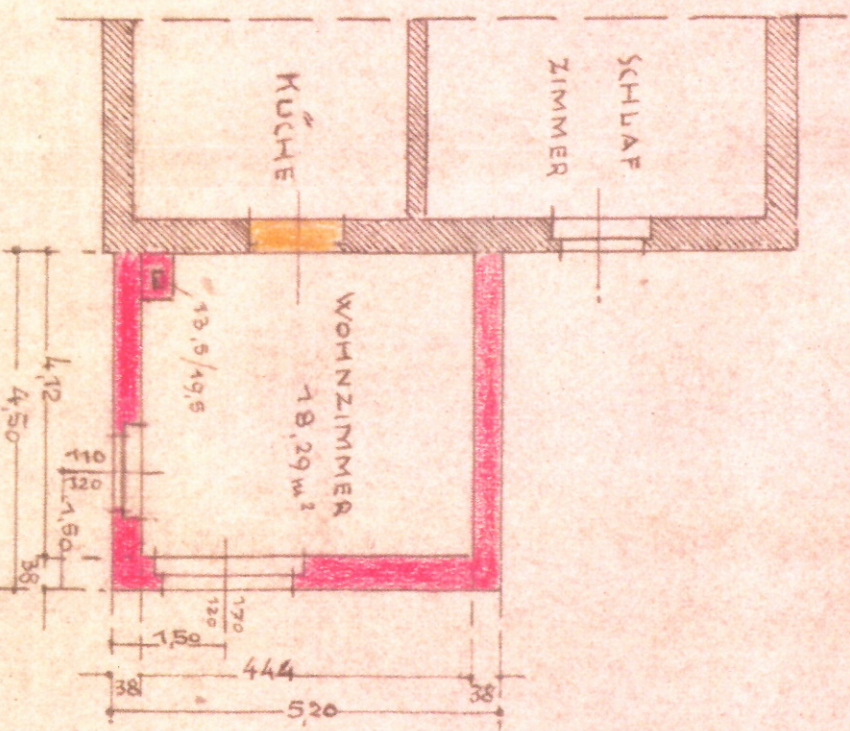


WEST-ANSICHT

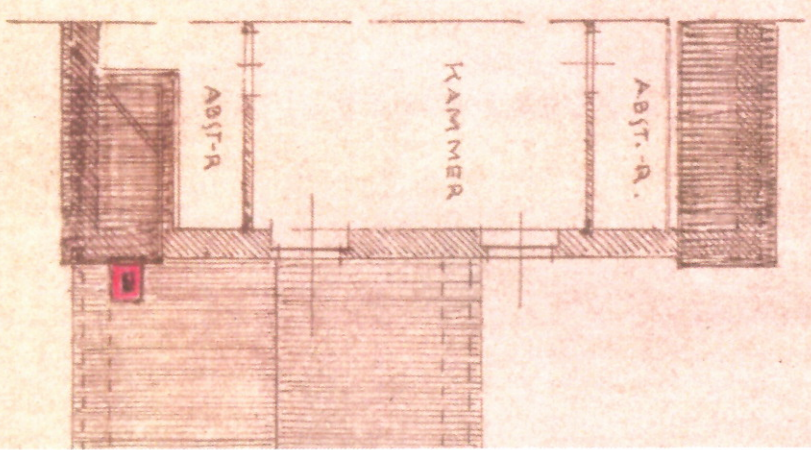
SÜD-ANSICHT



KELLERGEßCHOß

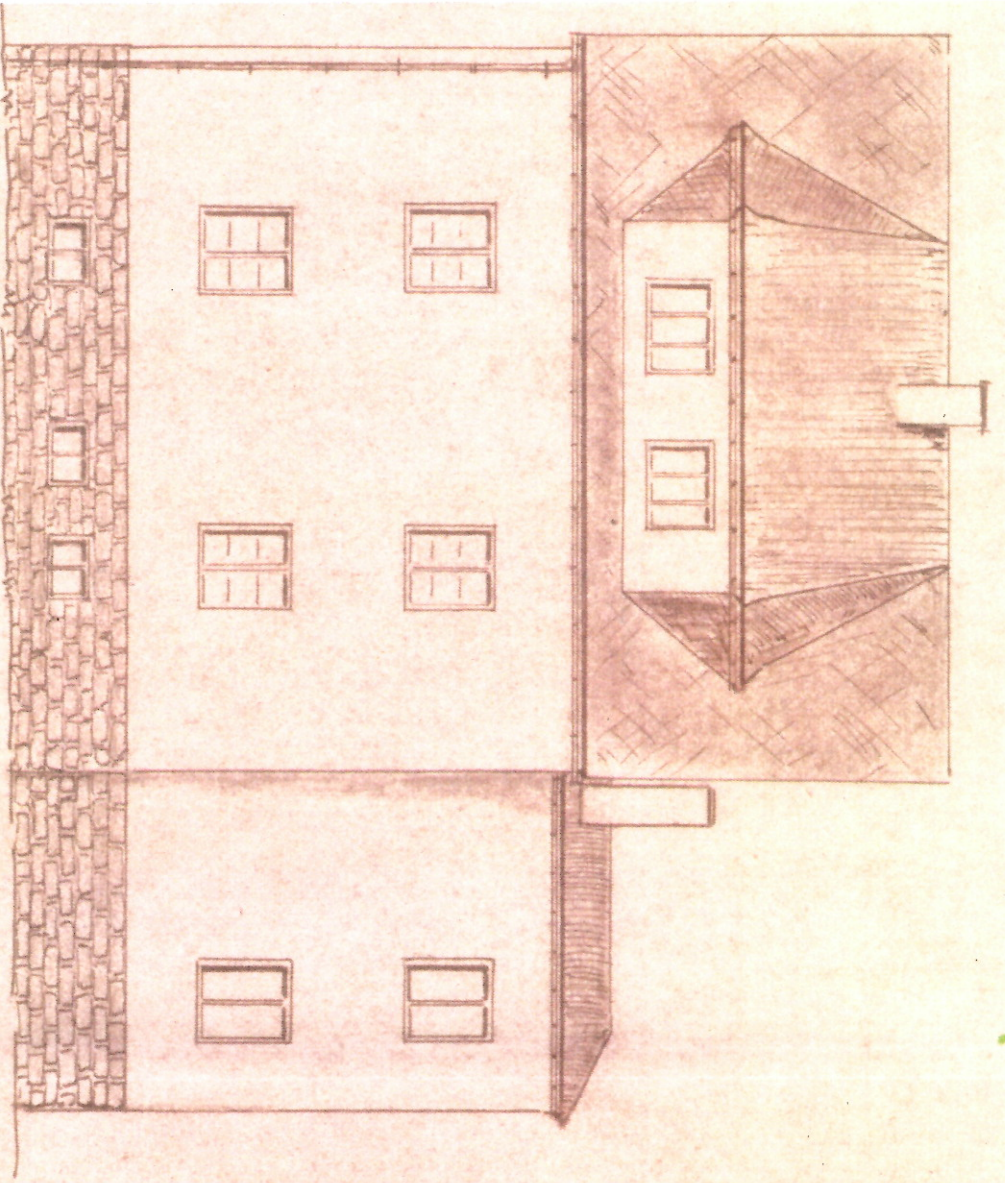


ERD- u. 1. OBERGEßCHOß

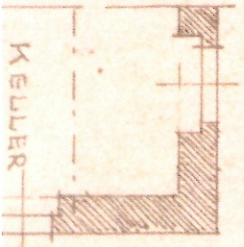


DACHGEßCHOß

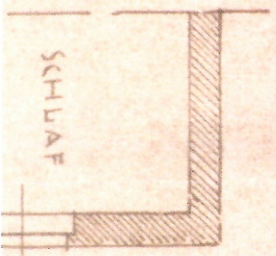




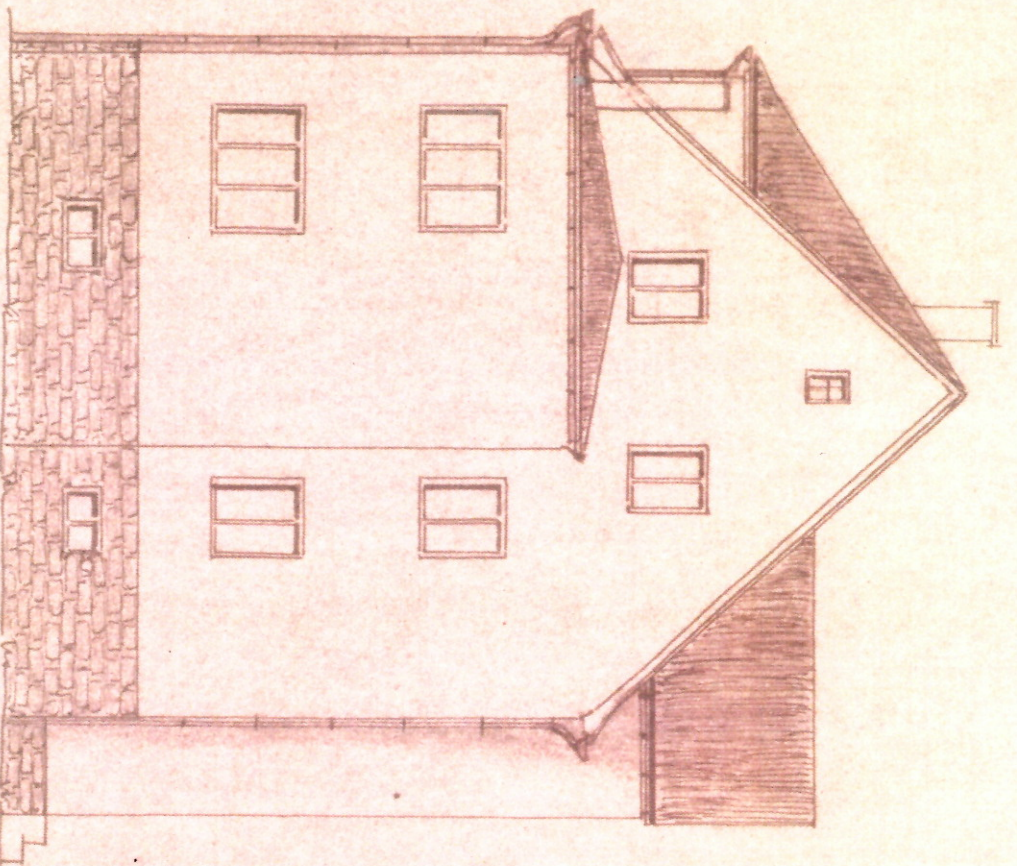
WEST-ANSICHT



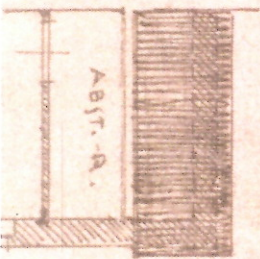
KELLER



SCHLUF

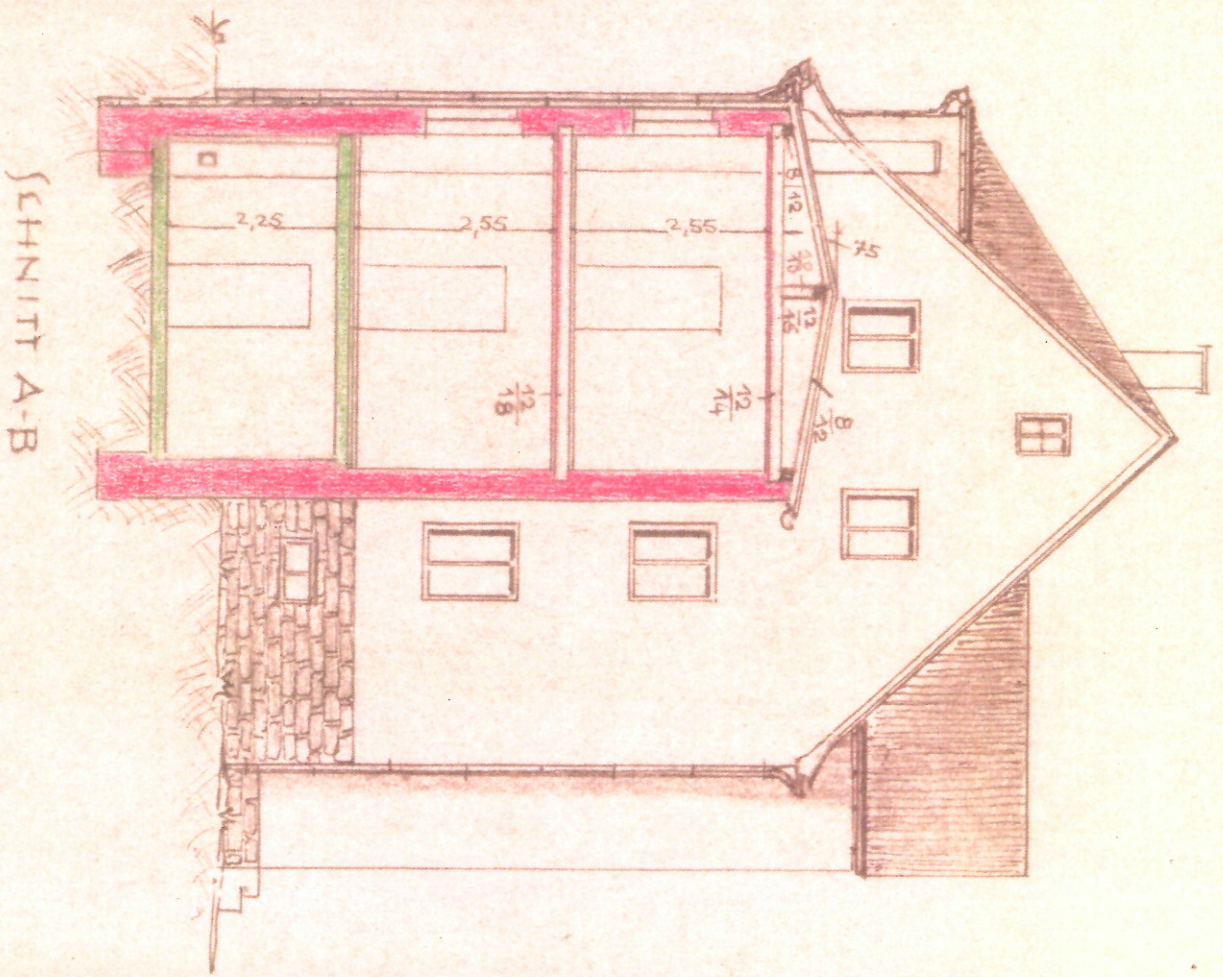


SÜD-ANSICHT



Abt.-A.





SCHNITT A-B

ANBAU VON ZWEI WOHNZIMMER  
 AN DAS WOHNHAUS FÜR DIE  
 ERBIN HERRN ERHARD BRÄUER  
 U. HERRN SIEGFRIED LÖßER IN  
 NEUDORF 1/2 KARLSBADER-  
 STR. 125.