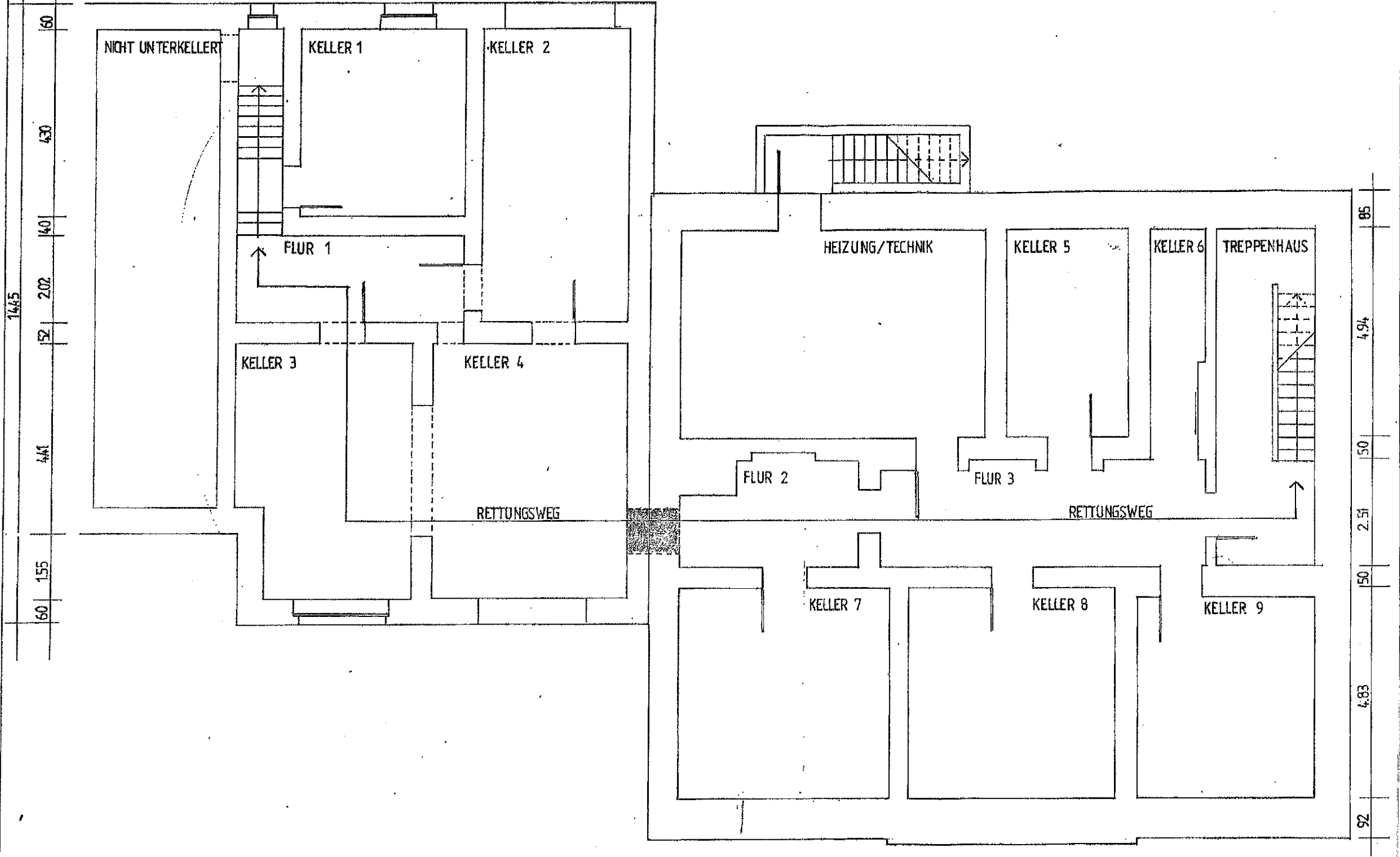


1290										1647									
2.87	40	1.10	40	3.97	50	3.28	52	71	7.11	50	2.84	53	1.17	25	2.31	85			
2.87	40			5.47	50	3.28	52	2.00	2.80	50	7.76			25	2.31	85			



2.87	40	4.04	52	4.52	52	71	1.29	2.80	50	7.76	25	1.29	12	90	85
3.40	60	3.34	52	4.52	52	71		4.91	50	4.80	50	4.20			85
3.40				9.50		71		4.91	50	4.80	50	4.20			85
12.90										16.47					